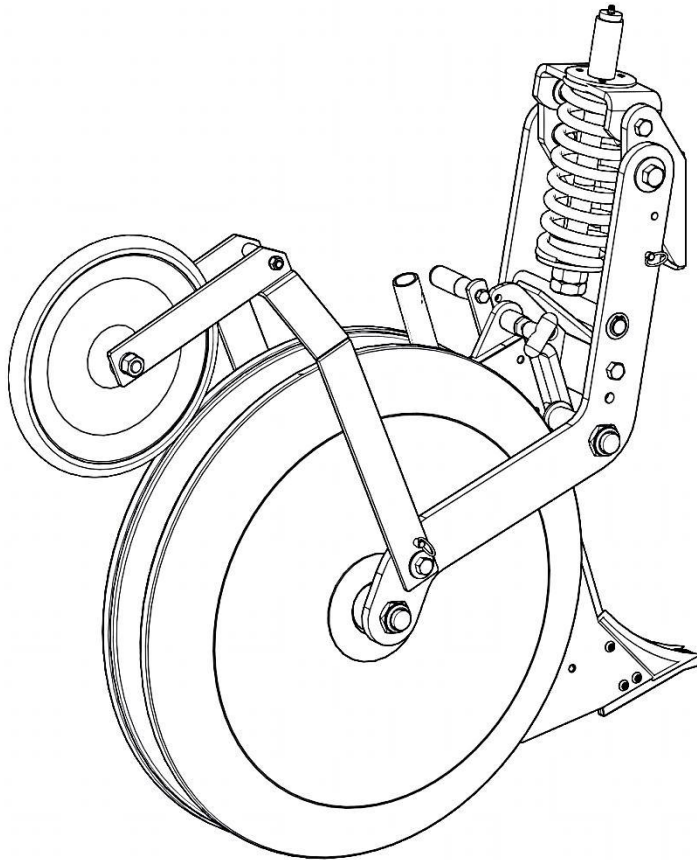
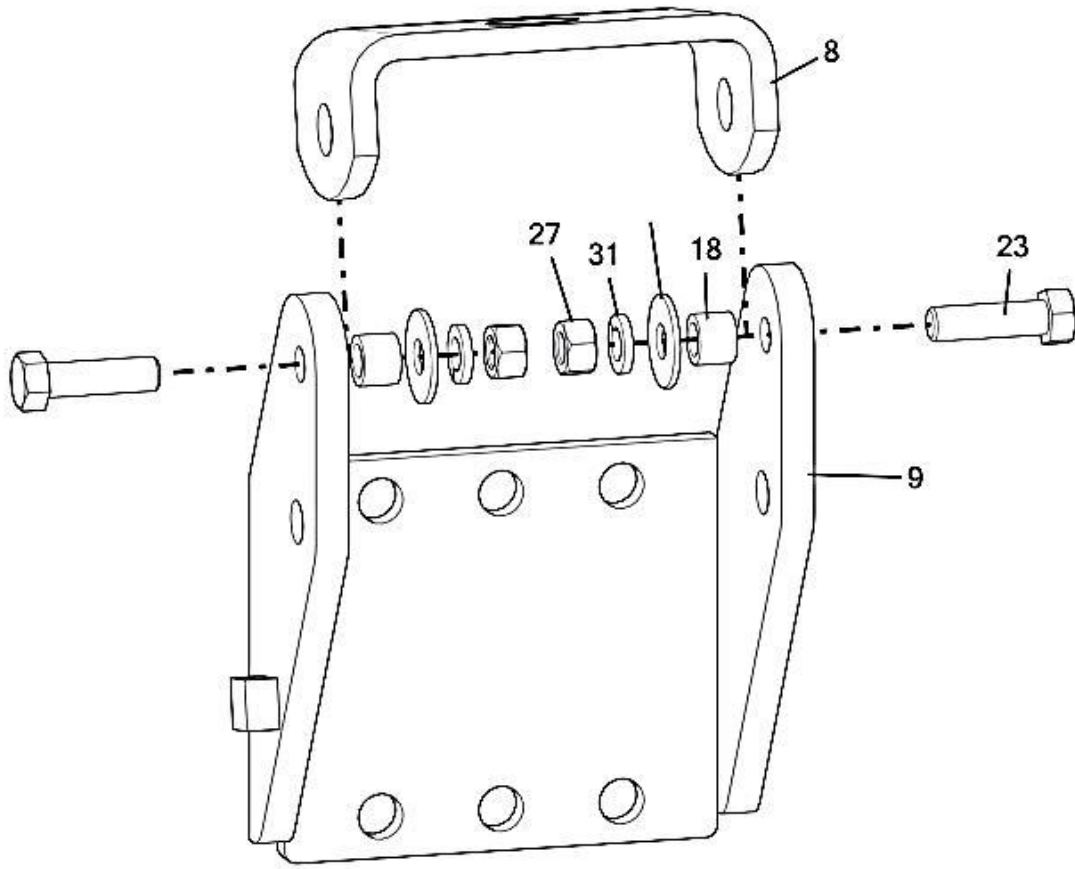


# ACCRA-PACK™ OPENER, AP19-015 (GEN-2)

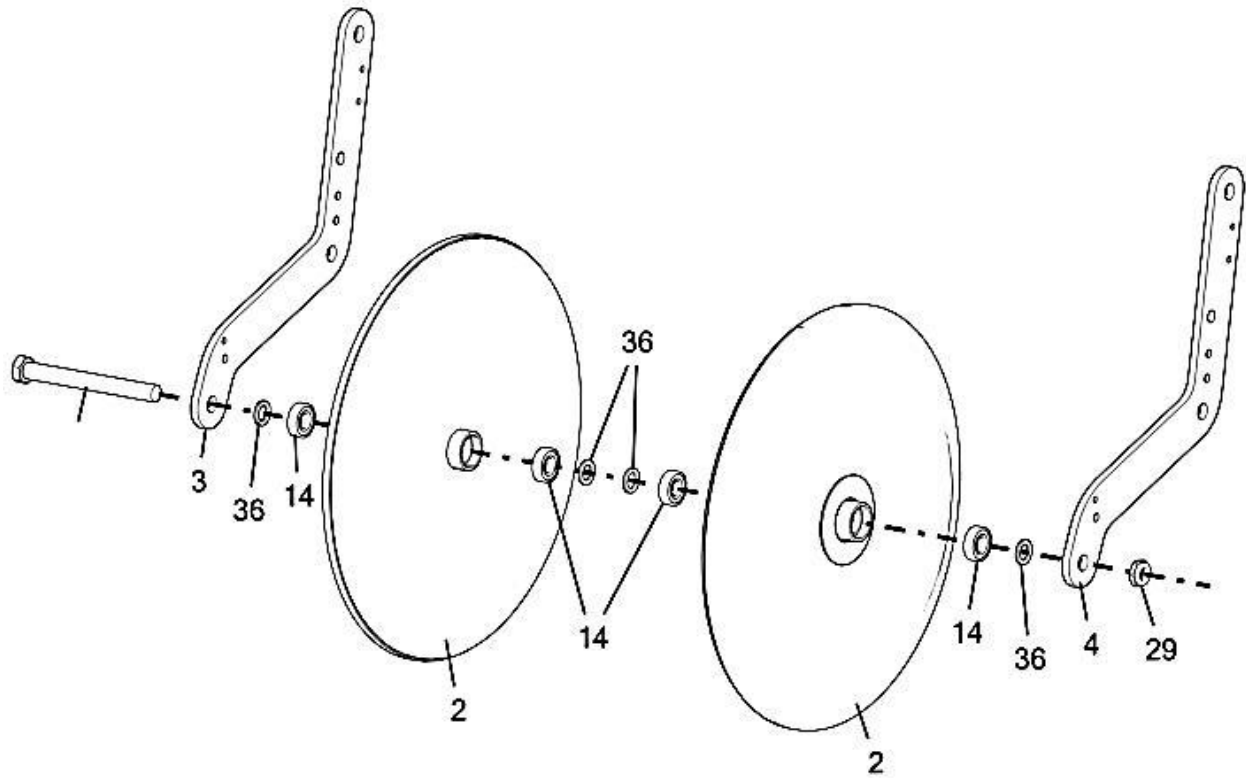


AP OPENER MOUNT ASSEMBLY



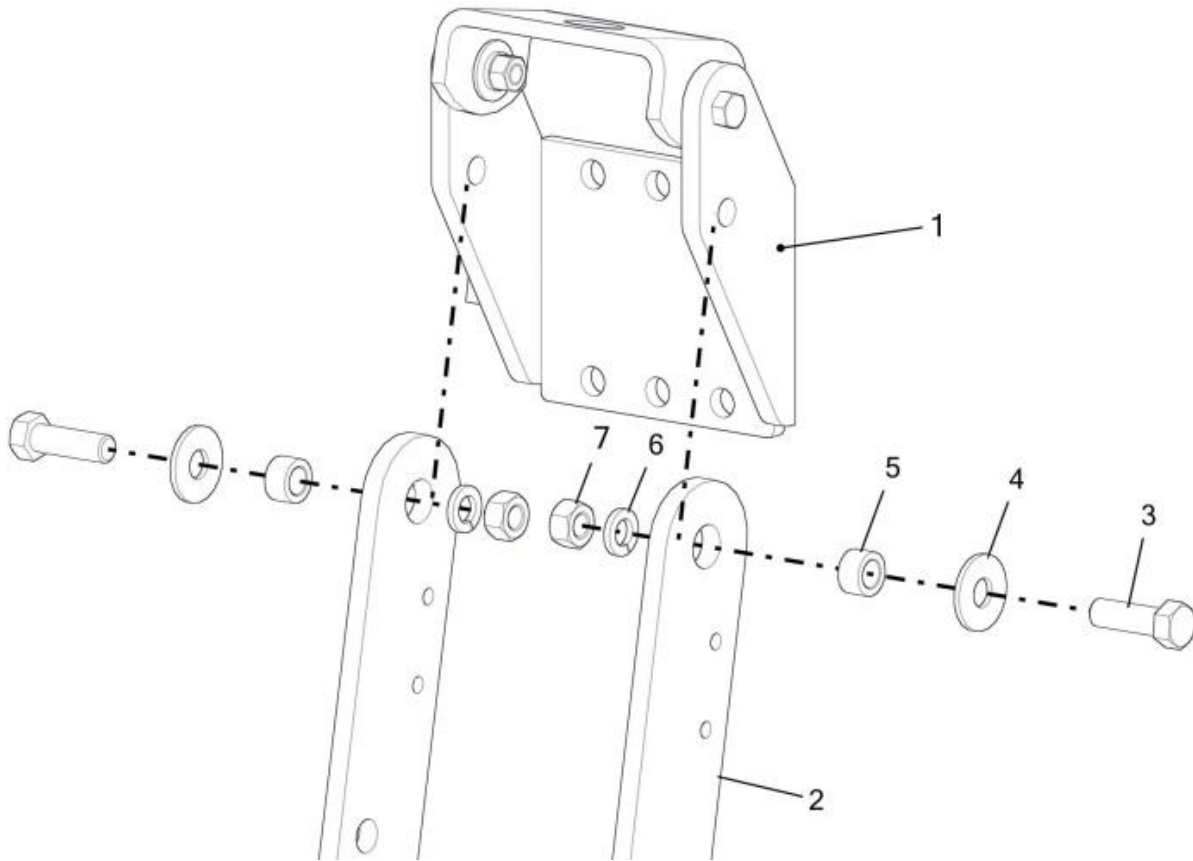
<u>Key</u>	<u>Part Number</u>	<u>Description</u>	<u>Quantity</u>
1	AP9-008	SPRING TRUNION	1
2	AP9-009	OPENER MOUNT BRACKET	1
3	7113-107	CAP SCREW 1/2" NC	2
4	6133-024	BUSHING	2
5	7723-015	HEX NUT 1/2" NC	2
6	7843-015	LOCK WASHER 1/2"	2
7	7813-015	FLAT WASHER 1/2"	2

AP PACKER-ARM ASSEMBLY



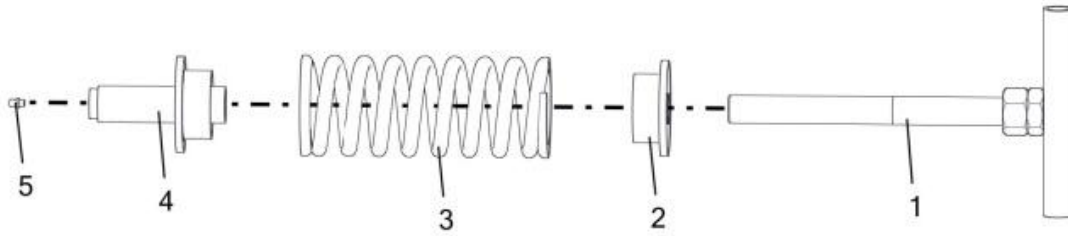
<u>Key</u>	<u>Part Number</u>	<u>Description</u>	<u>Quantity</u>
1	AP9-003-12	AP PACKER ARM	2
2	AP9-002	PACKER WHEEL	2
3	AP9-004	AP AXLE	1
4	5449-040	BEARING, 26" PACKER	4
5	7896-001	MACHINE BUSHING	4

AP OPENER MOUNT to AP PACKER-ARM

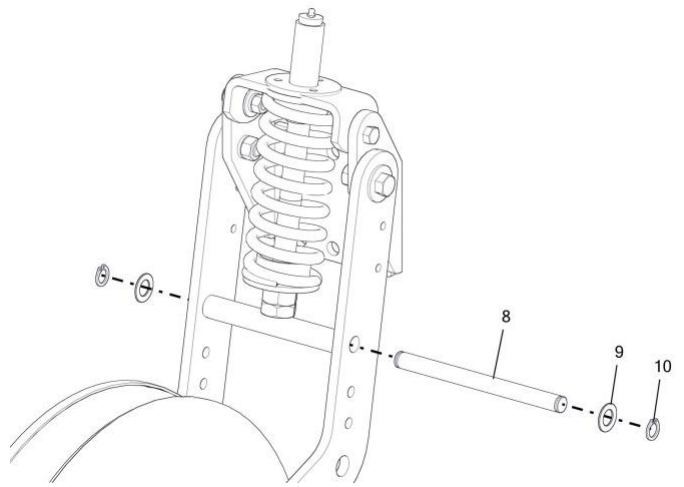
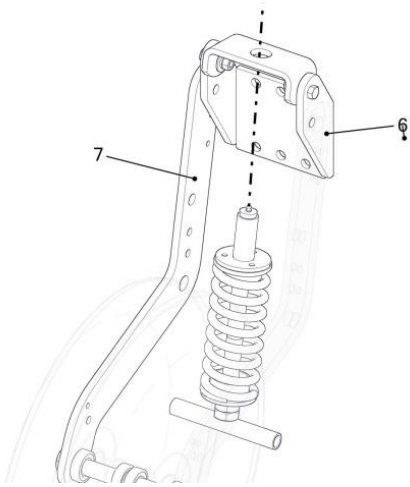


<u>Key</u>	<u>Part Number</u>	<u>Description</u>	<u>Quantity</u>
1	AP19-015-11	AP OPENER MOUNT ASSY	1
2	AP19-015-13	AP PACKER ARM ASSY	1
3	7114-109	CAP SCREWN 5/8" NC	2
4	7814-015	FLAT WASHER 5/8"	2
5	6143-007	BUSHING	2
6	7844-020	LOCK WASHER 5/8"	2
7	7724-005	HEX NUT 5/8" NC	2

## SPRING ASSEMBLY



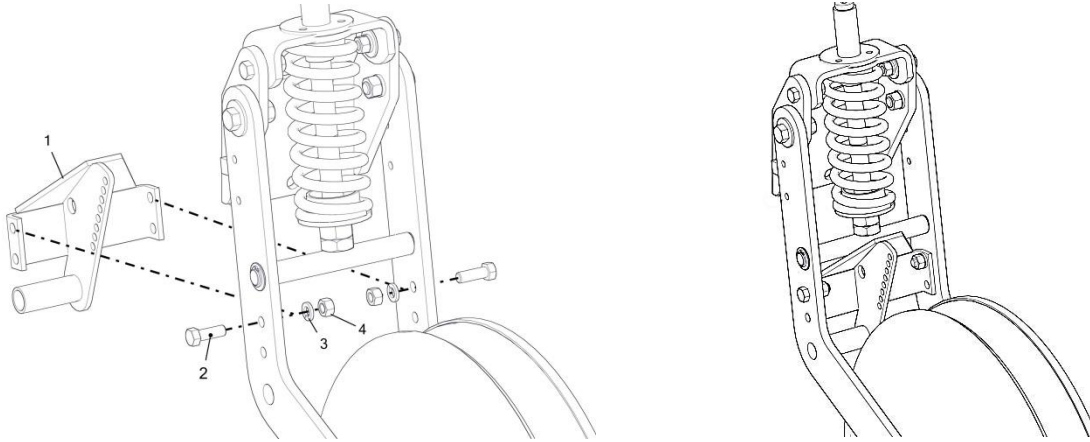
<u>Key</u>	<u>Part Number</u>	<u>Description</u>	<u>Quantity</u>
1	AP9-006	SPRING ROD	1
2	AP9-007	SPRING RETAINER WASHER	1
3	5110-030	COMPRESSION SPRING	1
4	AP9-010	SPRING ROD SUPPORT TUBE	1
5	5169-000	GREASE ZERK (INCLUDED WITH AP9-010)	4



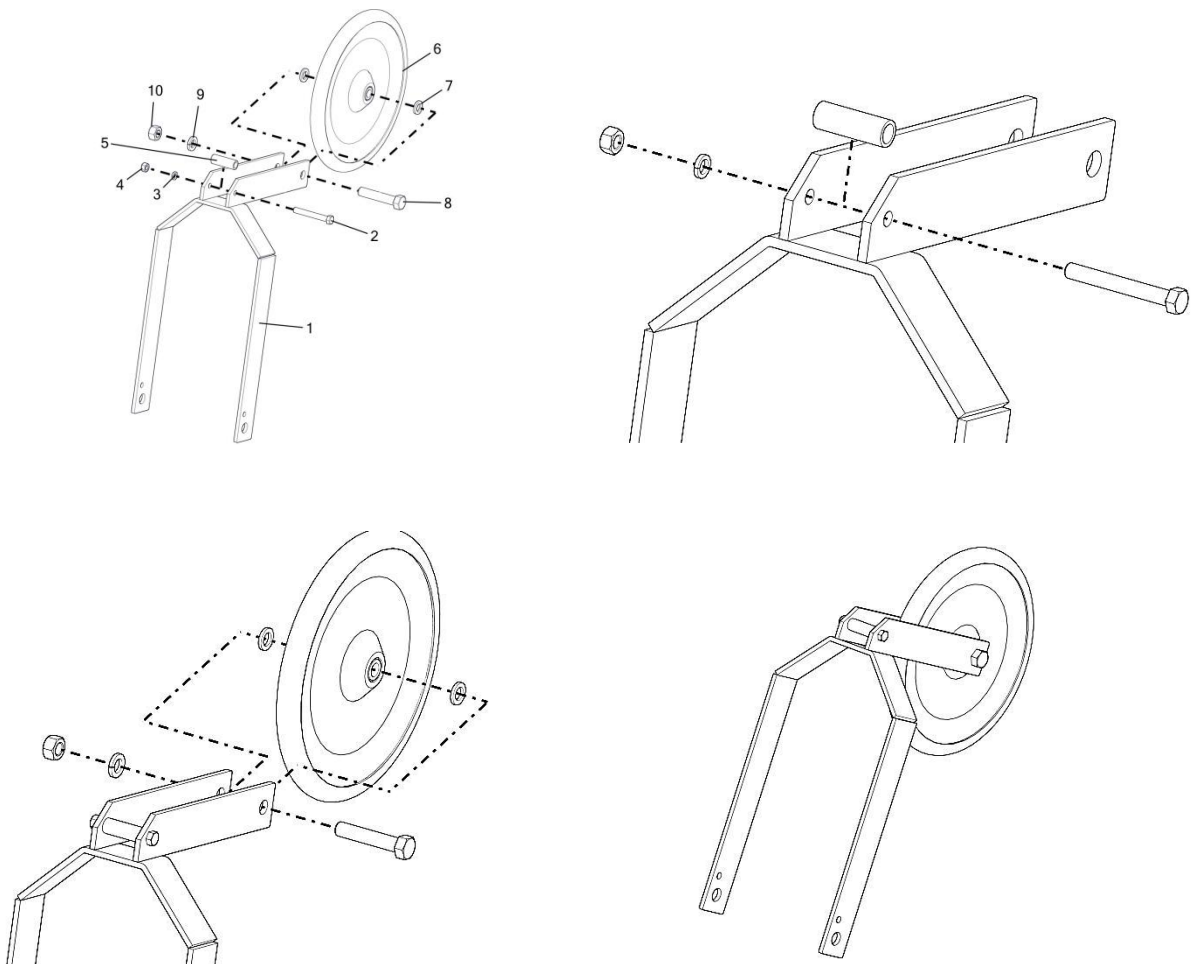
SPRING ASSY, AP19-015-14

KEY	PART #	DESCRIPTION	QTY.
1	AP9-006-10	1" SPRING ROD	1
2	AP9-007-10	SPRING RETAINER WASHER	1
3	5110-030	COMPRESSION SPRING	1
4	AP9-010	SPRING ROD SUPPORT TUBE	1
5	5169-000	GREASE FITTING, 1/4-28	1
6	AP19-015-11	AP OPENER MOUNT ASSY	1
7	AP19-015-13	AP PACKER ARM ASSY	1
8	8025-040	SHAFT	1
9	7895-100	MACH BUSHING, 3/4" 14GA	2
10	5459-075	3/4" SNAP RING	2

## BOOT ADJUSTMENT BRACKET



## CENTER PACKER ASSEMBLY



BOOT ADJUSTMENT BRACKET, AP19-015-015

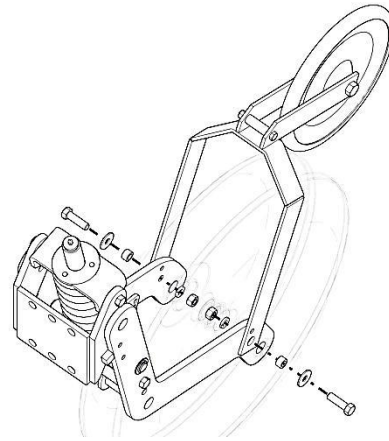
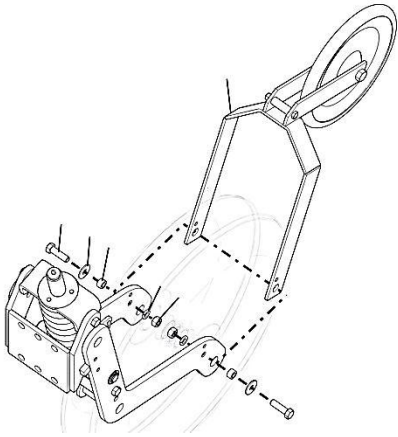
KEY	PART #	DESCRIPTION	QTY.
1	AP9-005-10	BOOT ADJUSTMENT BRACKET	1
2	7113-102	CAP SCREW 1/2"-13UNC X 1-1/2"	2
3	7843-015	LOCK WASHER 1/2"	2
4	7723-015	1/2" - 13 HEX NUT	2

CENTER PACKER ASSY, AP9-034

KEY	PART #	DESCRIPTION	QTY.
1	AP9-033-10	CENTER PACKER WHEEL ARM	1
2	7112-070	CAP SCREW 3/8"-16UNC X 3"	1
3	7842-010	LOCK WASHER 3/8"	1
4	7722-010	HEX NUT 3/8"-16UNC	1
5	AP9-034-11	SPACER	1
6	AP9-017	12" X 1" CLOSING WHEEL	1
7	7894-001	5/8" 10GA NR MACH. BUSHING	2
8	7114-028	CAP SCREW 5/8" NC X 3-1/4"	1
9	7844-020	LOCK WASHER 5/8"	1
10	7724-005	HEX NUT 5/8"-11UNC	1



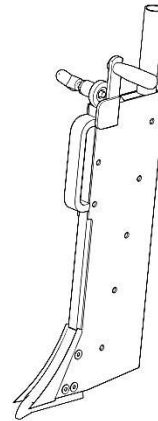
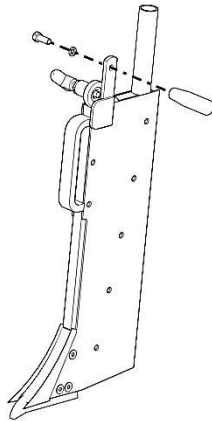
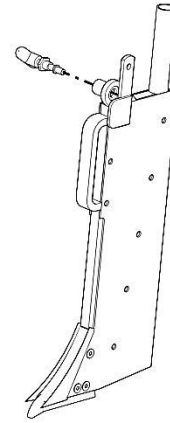
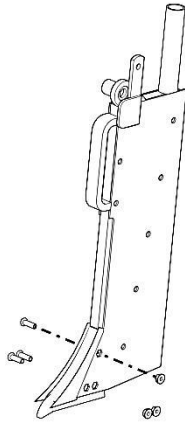
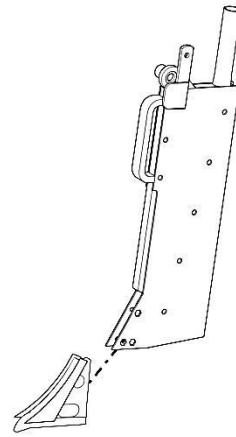
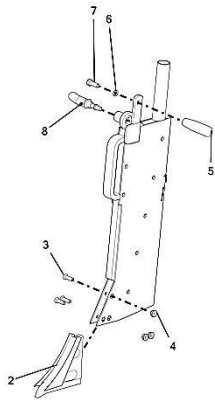
CENTER PACKER ASSY to AP PACKER-ARM ASSY



CENTER PACKER ASSY to AP PACKER-ARM ASSY

KEY	PART #	DESCRIPTION	QTY.
1	AP9-034	CENTER PACKER ASSY	1
2	7113-107	CAP SCREW 1/2"-13UNC X 2"	2
3	7813-015	FLAT WASHER 1/2"	2
4	6133-007	BUSHING	2
5	7843-015	LOCK WASHER 1/2"	2
6	7723-015	1/2" - 13 HEX NUT	2
7	AP19-015-013	AP PACKER-ARM ASSY	1

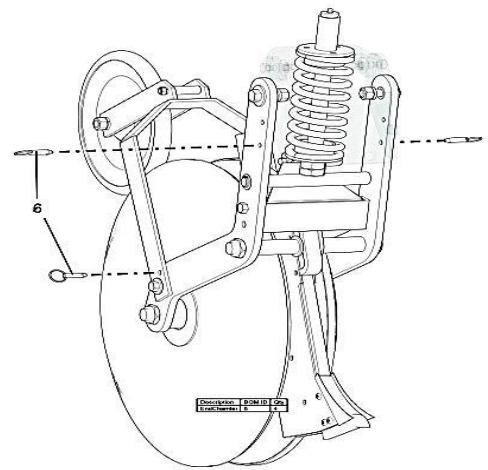
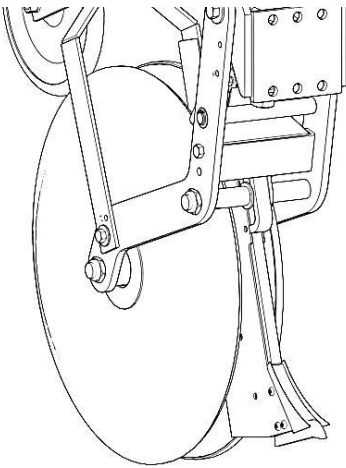
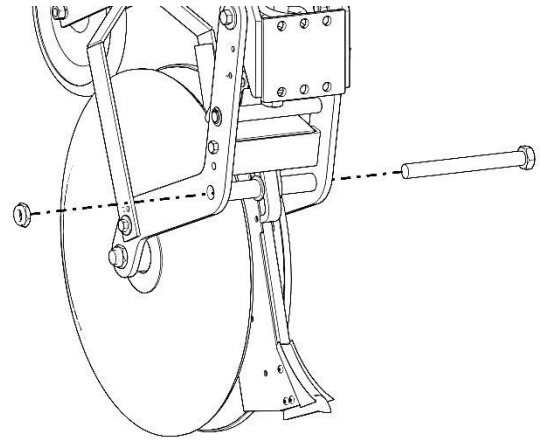
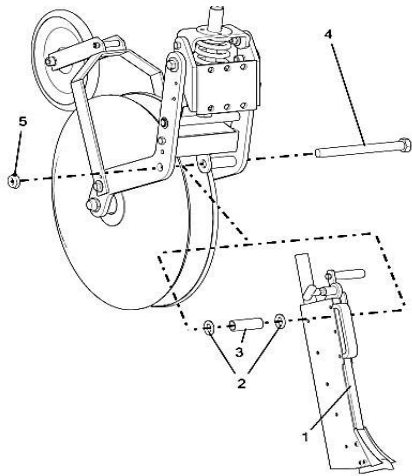
## AP BOOT ASSEMBLY



### AP BOOT ASSY, AP19-015-12

KEY	PART #	DESCRIPTION	QTY.
1	AP9-001-10	AP BOOT	1
2	5919-638	JD SPLIT PACKER BOOT POINT	1
3	7123-100	5/16" X 1" BUTTON HEAD SOCKET	3
4	7721-007	HEX FLANGE NUT, 5/16" NC (SERRATED)	3
5	5329-096	BOOT HANDLE	1
6	7842-010	LOCK WASHER 3/8"	1
7	7112-050	CAP SCREW 3/8"-16UNC X 1"	1
8	5329-100	LOCATING PIN, ASSY	1

AP BOOT ASSY to AP PACKER-ARM ASSY



AP BOOT ASSY to AP PACKER-ARM ASSY

KEY	PART #	DESCRIPTION	QTY.
1	AP19-015-12	AP BOOT ASSY	1
2	7816-010	FLAT WASHER 1" SAE	2
3	6133-060	BUSHING	1
4	AP9-004-10	AP AXLE	1
5	7726-013	LOCKNUT, 1-NC HALF HEIGHT	1
6	7921-010	3/8" X 1.5" BALL DETENT PIN	3

