

Calkins

CULTA-WEEDER™



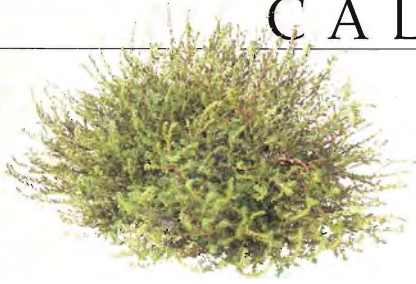
DEPENDABLE

TILLAGE

EQUIPMENT

SINCE 1923

CALKINS' DUAL-PURPOSE R



Rotary rod weeders were initially developed to control weeds in summerfallow. Their design is highly effective: square rods rotating in a reverse direction forcing weeds upward to the ground surface.

Ironically it is not uncommon now to see a rod weeder operating in a completely weedless field. But for another purpose: to set the moisture line in summerfallow.

And that's important. Loose soil will lose moisture to the depth of tillage — regardless of whether you plow or disc. Consequently, this soil type should not be allowed to extend to the surface, since moisture travels upward through compact soil by capillary action.

That's why knowledgeable farmers utilize reverse rotating rods to compact their soil. This process allows an insulating mulch of loose clods, soil and trash to blanket the surface and help stop evaporation. To set the moisture line, just immediately follow your initial tillage with a rod weeder.

Then, in each succeeding operation, avoid running the rod any shallower until moisture is held at a depth suitable for seeding. Your final rodding pass will make a firm seed bed in moist soil.

Clearly, the rod weeder is an indispensable tool for all soil affected by limited rainfall. Without this field advantage, you would not have sufficient moisture to grow crops successfully.

Is the rod weeder misnamed? Yes. Or at least undernamed. It purposefully kills weeds. But it performs beyond initial duty by adding many bushels to your yield. Apply this knowledge with a Calkins Culta-Weeder and you'll achieve the lowest tillage cost per acre, while covering more acres per unit — in all kinds of soil and trash conditions.



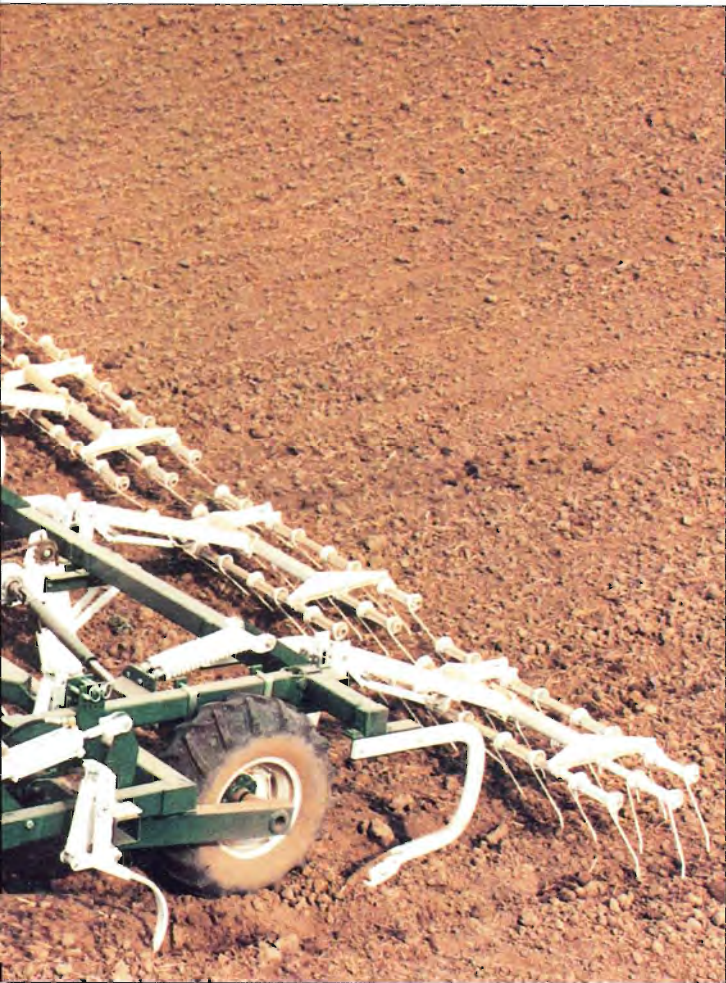
ROLLING TONGUE LEVELS UNEVEN GROUND

Farming uneven ground? Optional rolling tongue design permits Culta-Weeder to operate independent of the hitch and adapt to a multitude of terrains and conditions. On the road, Culta-Weeder transports like all rigid tongue machinery for easy highway travel.

The Culta-Weeder allows an insulating mulch of loose clods, soil and trash to blanket the surface and help stop evaporation.



OLD WEEDER IMPROVES YIELD



MULTI-FUNCTION HYDRAULIC VALVE

A multi-function hydraulic valve offers several advantages: 1) allows only 600 lb. of pressure for safe unfolding, while retaining total tractor pressure for wing lift; 2) permits full tractor pressure to raise machine out of the ground, while limiting pressure to 600 lb. for in-ground depth control and cylinder longevity; 3) locks oil in machine once depth is set to eliminate wing-to-center-frame creep; 4) sequences main lift with rolling tongue when optional rolling tongue is installed.



ADJUSTABLE ROD DEPTH CONTROL

Raise or lower weeder section operating range easily by changing fastener pins. Adjust shank depth to rod depth from $\frac{1}{2}$ inch to $2\frac{1}{2}$ inches to suit your field conditions.



ADVANCED ROCK TRIP

A spring pressured rock trip is positioned over-center for proper trip tension. Automatic reset holds the weeder unit securely in the ground — until the initial point of trip — to maximize operation.



INDEPENDENT SHANK OPERATION

Each shank functions independently and can be raised into a non-working position. To do this, simply unpin the shank, lift it out of the mounting bracket and then repin the shank at a higher setting.



INDEPENDENT LEVELING

Each cylinder base is adjustable to optimize side-to-side leveling and ensure even shank and rod depth.

SINGLE POINT DEPTH CONTROL

Simple clock/counter-clock adjusting lever permits quick working depth control adjustment.

CULTA - WEEDER™ SPECIFICATIONS

MODELS

MODEL: CW20-033
LENGTH: 33 feet
CENTER: 12 feet
WINGS: 10 1/2 feet
SHANKS: 25

MODEL: CW20-036
LENGTH: 36 feet
CENTER: 12 feet
WINGS: 12 feet
SHANKS: 27

FRAME:
4"x4" square steel tubing

TONGUE UNIT:
• TONGUE: rigid 4"x8" steel tubing
• ROLLING TONGUE FRONT: 4"x6" steel tubing
• ROLLING TONGUE REAR MEMBER: 4"x8" steel tubing

WEEDING ROD:
• 1" square high carbon heat treated steel
• GOOSENECK: high carbon heat treated steel
• CLEARANCE: 26" from frame to rod

WEEDER UNIT:
• Spring loaded 4"x4" steel tubing
• Adjustable hydraulic pressure set value
• Automatic reset rock trip on weeder units
• Adjustable single point hydraulic depth control

BOOT DRIVECHAIN:
• Special hard roller link

TIRE SIZE:
• 12 1/2Lx15
• High cleat on drive tires

DRIVE BOOT:
• One each section

WHEELS:
• 6-bolt hubs

HUBS, SPINDLES & BEARINGS:
• Heavy duty
• Hubs can be greased
• Spindles are replaceable and bolt-on

U-JOINT:
• 1 1/4" 20 HP

DRIVELINES:
• 1 1/4" square

SHANK:
• 9/16"x1 3/4" spring steel

SHANK CLEARANCE:
• 24" frame to point

WEIGHT:
• 266 per ft. rolling tongue with harrow

TRANSPORT HEIGHT:
• 15'2"

TRANSPORT WIDTH:
• adjustable to 14'8"

COMPLETE SUPPORT SINCE 1923

Calkins backs its equipment and customers with a highly skilled dealer service organization. You receive the complete support of factory authorized service and shop facilities, a stock of factory parts and factory trained technicians. For warranty information, please contact your local dealer.



Transports like all rigid tongue machinery for easy highway travel.

Calkins

Calkins Manufacturing Co.
Spokane Industrial Park,
Bldg. 15
Spokane, WA 99214
509-928-7420



**CALKINS
PARTS MANUAL**



**CW20
Culta-Weeder**

3 Section

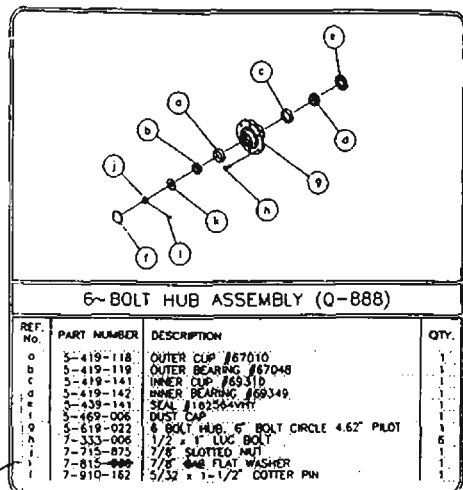
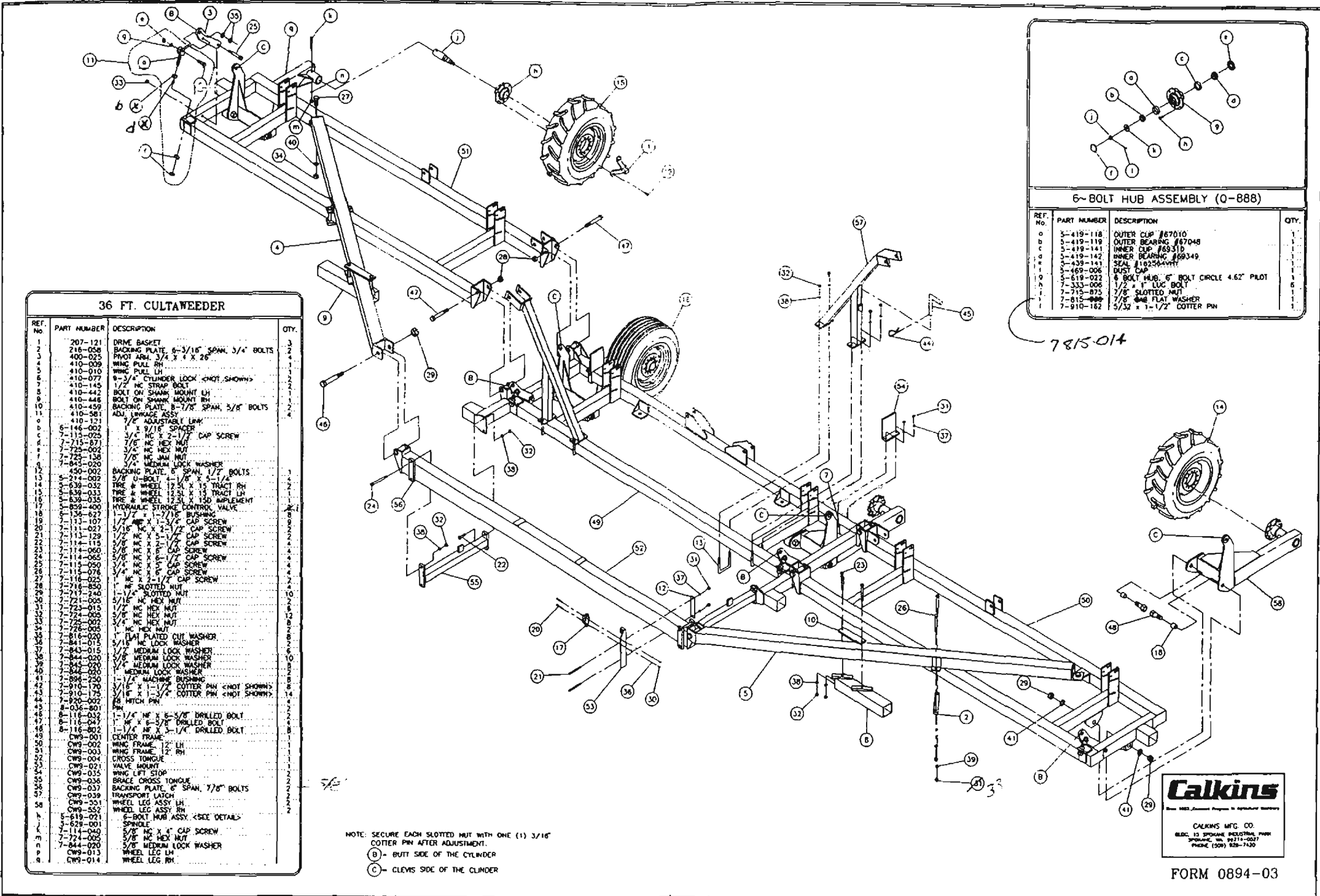
1996

COOMBS MANUFACTURING COMPANY

**7106 West Warehouse Avenue
Spokane, WA 99204**

*Manufacturing, Sales and Parts
CALKINS FARM MACHINERY*

(509) 456-8552



6-BOLT HUB ASSEMBLY (0-888)

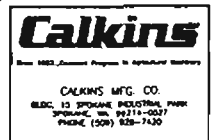
REF. No.	PART NUMBER	DESCRIPTION	QTY.
a	5-419-118	OUTER CLIP #67010	1
b	5-419-119	OUTER BEARING #67048	1
c	5-419-141	INNER CLIP #6931D	1
d	5-419-142	INNER BEARING #69349	1
e	5-439-141	SEAL #1025A-11111	1
f	5-469-006	DUST CAP	1
g	5-619-022	6-BOLT HUB, 6" BOLT CIRCLE 4.62" PILOT	1
h	7-333-006	1/2" x 1" LUC BOLT	6
i	7-315-075	1/2" x 1" SLOTTED NUT	6
j	7-815-009	7/8" x 1-1/2" FLAT WASHER	6
k	7-910-162	5/32" x 1-1/2" COTTER PIN	1

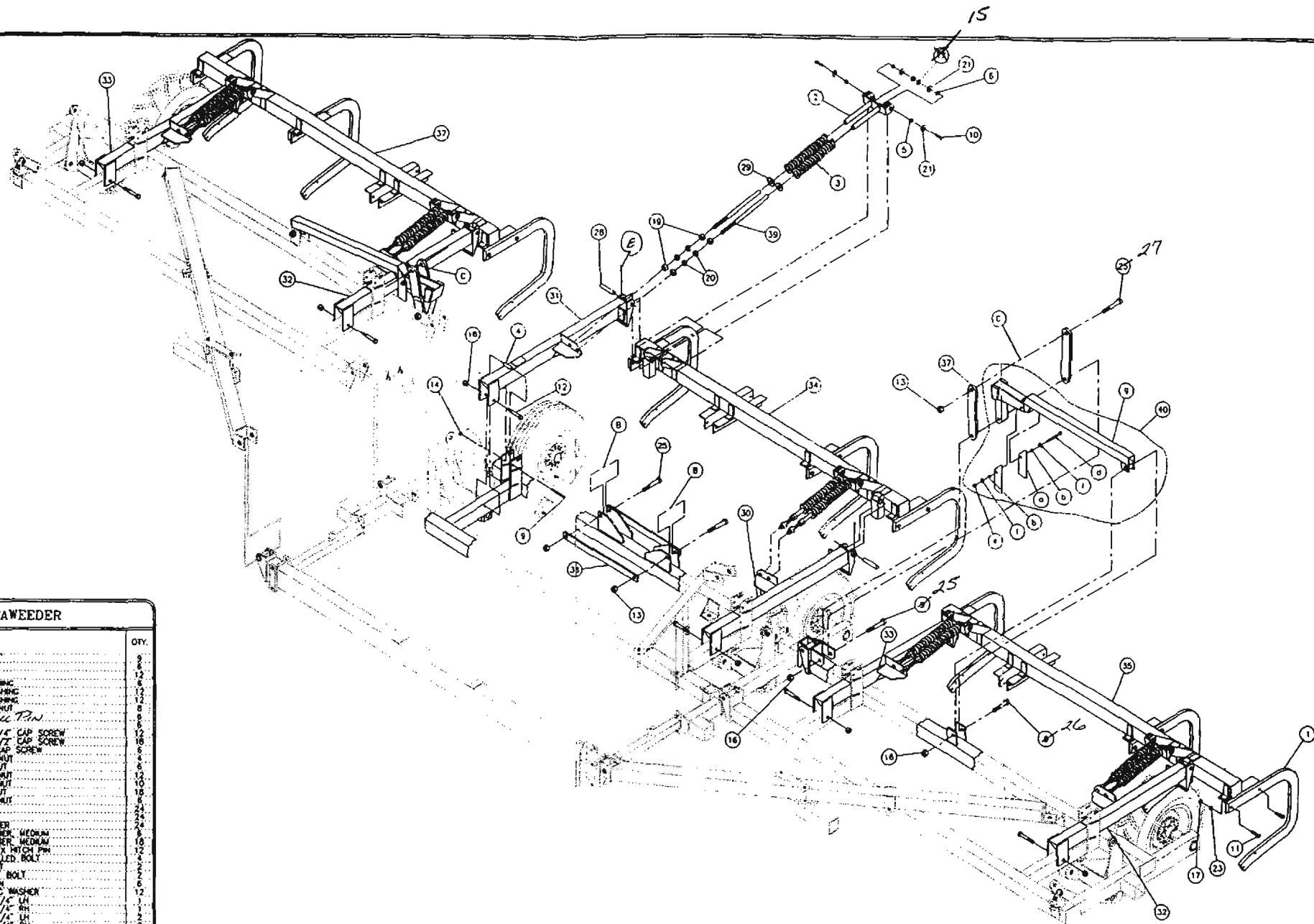
7815-014

36 FT. CULTAWEEDER

REF. No.	PART NUMBER	DESCRIPTION	QTY.
1	207-121	DRIVE BASKET	1
2	216-058	BACKING PLATE, 6-3/16" SPAN, 3/4" BOLTS	2
3	400-025	PIVOT ARM, 3/4" X 4 X 26"	1
4	410-009	WING PULL RH	1
5	410-010	WING PULL LH	1
6	410-077	8-3/4" CYLINDER LOCK (NOT SHOWN)	2
7	410-145	1/2" NC STRAP BOLT	2
8	410-442	BOLT ON SHANK MOUNT LH	2
9	410-448	BOLT ON SHANK MOUNT RH	2
10	410-459	BACKING PLATE, 8-7/8" SPAN, 5/8" BOLTS	2
11	410-581	ADJ. LINKAGE ASSY.	2
a	6-146-002	1" X 9/16" SPACER	1
b	7-113-025	3/4" NC X 2-1/2" CAP SCREW	1
c	7-215-871	7/8" NC HEX NUT	1
d	7-228-002	3/4" NC HEX NUT	1
e	7-228-138	7/8" NC HEX NUT	1
f	7-843-020	3/4" MEDIUM LOCK WASHER	1
g	7-440-002	BACKING PLATE, 6" SPAN, 1/2" BOLTS	1
h	5-740-002	5/8" BOLT 4-1/2" X 1/2"	1
i	6-330-032	TIRE & WHEEL 12.5L X 15 TRACT RH	1
j	6-330-033	TIRE & WHEEL 12.5L X 15 TRACT LH	1
k	6-330-034	TIRE & WHEEL 12.5L X 15 D IMPLEMENT	1
l	1-859-400	HYDRAULIC STRIKE CONTROL VALVE	1
m	1-136-627	1-1/2" X 1-1/2" BUSHING	1
n	7-111-107	1/2" NC X 3/4" CAP SCREW	1
o	7-111-027	1/2" NC X 1-1/2" CAP SCREW	1
p	7-111-129	1/2" NC X 2-1/2" CAP SCREW	1
q	7-111-115	1/2" NC X 3-1/2" CAP SCREW	1
r	7-111-060	3/8" NC X 1-1/2" CAP SCREW	1
s	7-111-050	3/8" NC X 2-1/2" CAP SCREW	1
t	7-111-078	3/8" NC X 3-1/2" CAP SCREW	1
u	7-111-025	1/2" NC X 1-1/2" CAP SCREW	1
v	7-716-850	1" SLOTTED NUT	1
w	7-717-240	1-1/2" SLOTTED NUT	1
x	7-721-005	5/16" NC HEX NUT	1
y	7-723-013	5/16" NC HEX NUT	1
z	7-724-005	5/16" NC HEX NUT	1
aa	7-725-002	5/16" NC HEX NUT	1
ab	7-725-007	5/16" NC HEX NUT	1
ac	7-728-005	1/4" PLATED CUT WASHER	1
ad	7-841-015	3/16" NC LOCK WASHER	1
ae	7-841-015	1/2" MEDIUM LOCK WASHER	1
af	7-841-020	1/2" MEDIUM LOCK WASHER	1
ag	7-841-020	1/2" MEDIUM LOCK WASHER	1
ah	7-841-020	1/2" MEDIUM LOCK WASHER	1
ai	7-841-020	1/2" MEDIUM LOCK WASHER	1
aj	7-894-250	1-1/2" MACHING BUSHING	1
ak	7-910-170	COTTER PIN (NOT SHOWN)	1
al	7-910-175	3/16" X 1-3/4" COTTER PIN (NOT SHOWN)	1
am	7-920-002	28 MITCH PIN	1
an	8-036-801	1-1/4" NF X 5-3/4" DRILLED BOLT	1
ao	8-116-043	1" NF X 6-3/8" DRILLED BOLT	1
ap	8-116-802	1-1/4" NF X 3-1/4" DRILLED BOLT	1
aq	CW9-001	CENTER FRAME	1
ar	CW9-001	WING FRAME 12" LH	1
as	CW9-001	WING FRAME 12" RH	1
at	CW9-004	CROSS TONGUE	1
au	CW9-021	VALVE MOUNT	1
av	CW9-034	WING LET STOP	1
aw	CW9-038	BRACE CROSS TONGUE	1
ax	CW9-037	BACKING PLATE, 6" SPAN, 7/8" BOLTS	1
ay	CW9-039	TRANSPORT LATCH	1
az	CW9-051	WHEEL LEG ASSY LH	1
ba	CW9-052	WHEEL LEG ASSY RH	1
bb	5-619-021	6-BOLT HUB ASSY. <SEE DETAIL>	1
bc	5-628-001	SPINDLE	1
bd	7-114-040	5/8" NC X 4" CAP SCREW	1
be	7-724-005	5/16" NC HEX NUT	1
bf	7-844-020	5/8" MEDIUM LOCK WASHER	1
bg	CW9-013 LH	WHEEL LEG LH	1
bh	CW9-014	WHEEL LEG RH	1

NOTE: SECURE EACH SLOTTED NUT WITH ONE (1) 3/16" COTTER PIN AFTER ADJUSTMENT.
 (B) - BUTT SIDE OF THE CYLINDER
 (C) - CLEVIS SIDE OF THE CYLINDER



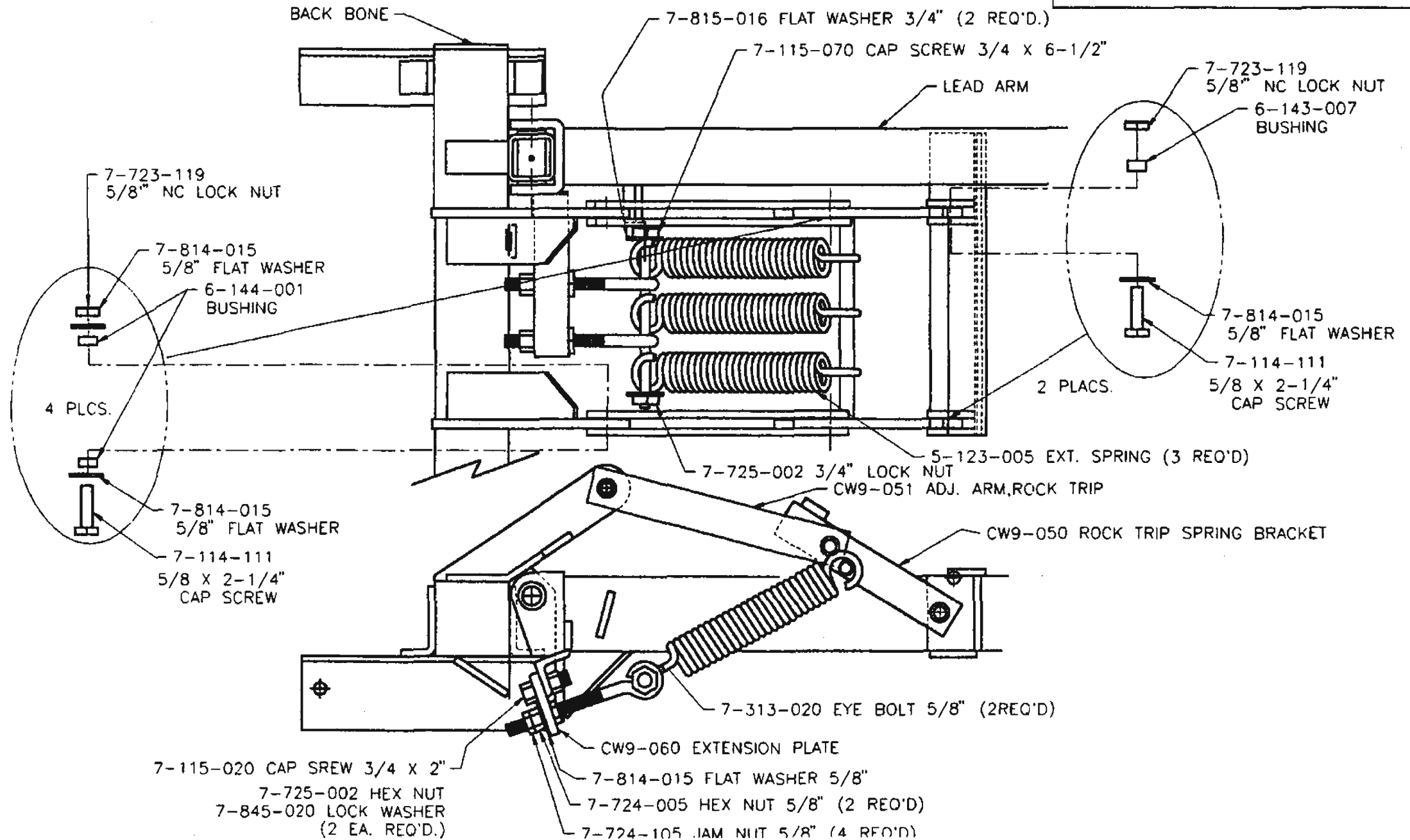


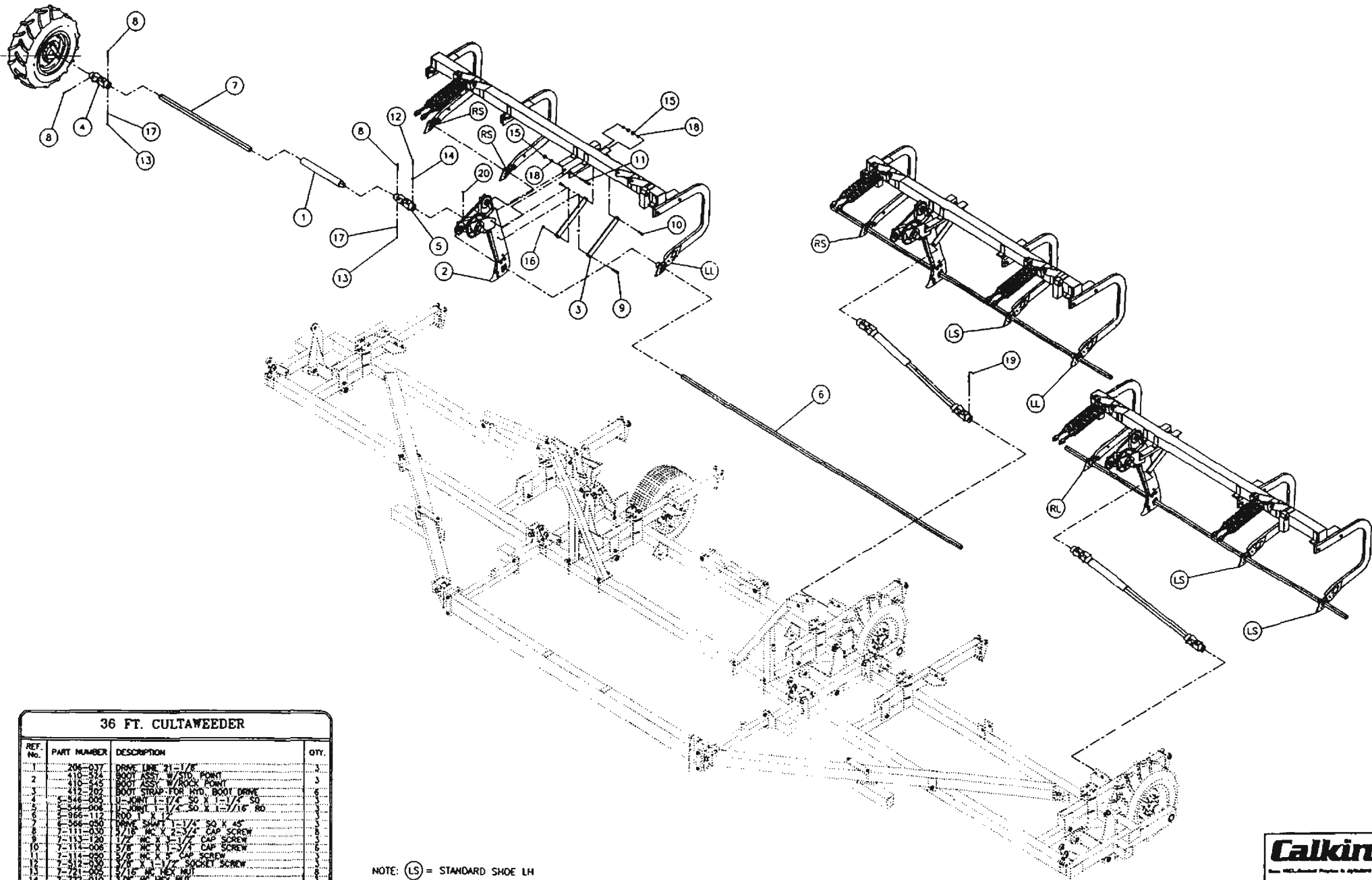
36 FT. CULTAWEEDER			
REF. No.	PART NUMBER	DESCRIPTION	QTY.
1	202-078	GOOSENECK	8
2	410-040	SPRING GUIDE	8
3	114-001	SPRING	12
4	135-018	1/4 X 3 BUSHING	12
5	143-007	1 X 9/16 BUSHING	12
6	144-001	1 X 7/16 BUSHING	12
7	716-850	1" HP SLOTTED NUT	8
8	7-022-008	1/8 X 2 Cotter Pin	8
9	7-113-127	1/2 X 1/2 NC X 3/4	8
10	7-114-111	1/2 X 1/2 NC X 2-1/4 CAP SCREW	16
11	7-115-050	1/2 X 1/2 NC X 5/8 CAP SCREW	8
12	7-116-050	1/2 X 1/2 NC X 5/8 CAP SCREW	8
13	7-116-850	1" HP SLOTTED NUT	8
14	7-023-015	1/2 X 1/2 NC HEX NUT	10
15	7-023-118	1/2 X 1/2 NC LOCK NUT	10
16	7-023-216	1/2 X 1/2 NC LOCK NUT	10
17	7-024-005	1/2 X 1/2 NC HEX NUT	16
18	7-025-121	1/2 X 1/2 NC LOCK NUT	16
19	7-026-005	1/2 X 1/2 NC HEX NUT	24
20	7-026-015	1/2 X 1/2 NC HEX NUT	24
21	7-014-015	3/16" FLAT WASHER	24
22	7-044-015	1/2" LOCK WASHER	24
23	7-044-020	1/2" LOCK WASHER	16
24	7-920-020	1/2" X 4-1/2" X FITCH PIN	12
25	8-116-051	1" HP X 5" DRILL BOLT	2
26	8-116-018	1" HP X 5" BOLT	2
27	8-116-501	1" HP X 5-1/2" BOLT	2
28	8-026-035	SPRING RETAINING WASHER	12
29	8-016-001	LEAD ARM	12
30	CW9-006	LEAD ARM	12
31	CW9-007	LEAD ARM	12
32	CW9-008	LEAD ARM	12
33	CW9-009	LEAD ARM	12
34	CW9-010	BACKBONE	12
35	CW9-011	BACKBONE	12
36	CW9-012	BACKBONE	12
37	CW9-013	BACKBONE	12
38	CW9-014	CENTER SUPPORT BAR	12
39	CW9-017	SPRING ROD	12
40	CW9-550	WING LIFT ASSY	2
0	110-108	STOP WING LIFT 3/8 X 3	2
1	133-007	BUSHING 1/2 X 2 1/16	8
2	133-127	1/2 NC X 2 1/8 CAP SCREW	8
3	143-007	1 X 9/16 NC LOCK NUT	8
4	7-013-013	1/2" FLAT WASHER	8
5	CW9-005	WING LIFT	2

NOTE: SECURE EACH SLOTTED NUT WITH ONE (1) 3/16" COTTER PIN AFTER ADJUSTMENT.
 (B) = BUTT SIDE OF THE CYLINDER
 (C) = CLEVIS SIDE OF THE CYLINDER

Calkins
 CALKINS MFG. CO.
 BLDG. 15 SPOONER INDUSTRIAL PARK
 SPOONER, WIS. 54214-0527
 PHONE (208) 928-7430

ROCK TRIP

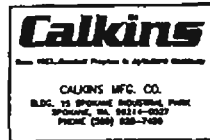




36 FT. CULTAWEEDER

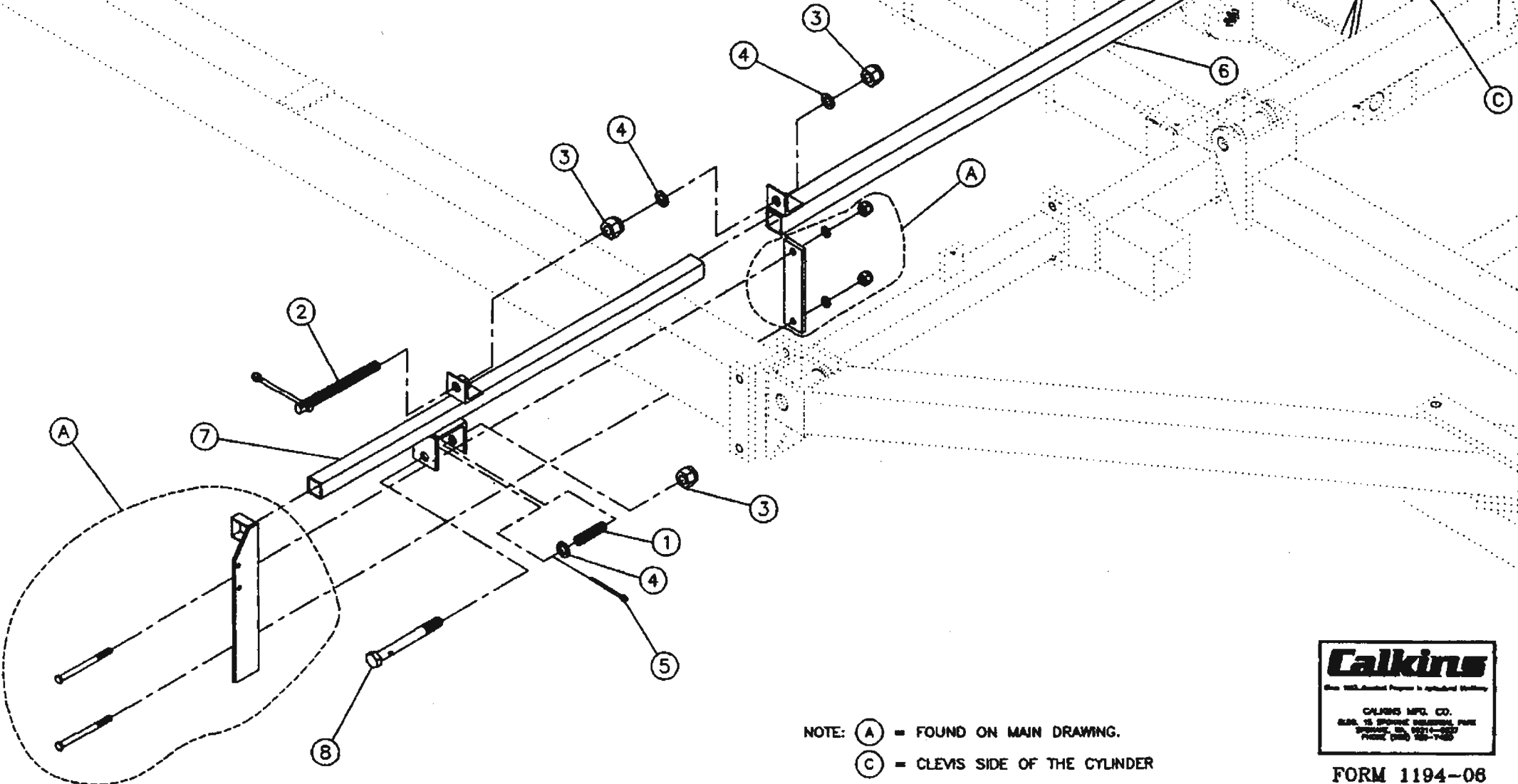
REF. No.	PART NUMBER	DESCRIPTION	QTY.
1	206-937	DRIVE SHAFT 31-1/2"	3
2	410-242	BOOT ASSY W/STC PUMP	3
3	410-202	BOOT STRAP FOR MID. BOOT DRIVE	6
4	344-500	FLAT 1-1/2" X 30. X 1-1/16" RO	2
5	344-500	FLAT 1-1/2" X 30. X 1-1/16" RO	2
6	268-285	DRIVE SHAFT 30 X 45"	1
7	111-030	1/2" X 1-1/2" X 1-1/2" CAP SCREW	2
8	111-030	1/2" X 1-1/2" X 1-1/2" CAP SCREW	2
9	111-030	1/2" X 1-1/2" X 1-1/2" CAP SCREW	2
10	111-030	1/2" X 1-1/2" X 1-1/2" CAP SCREW	2
11	111-030	1/2" X 1-1/2" X 1-1/2" CAP SCREW	2
12	721-100	1/2" X 1-1/2" X 1-1/2" CAP SCREW	2
13	721-100	1/2" X 1-1/2" X 1-1/2" CAP SCREW	2
14	721-100	1/2" X 1-1/2" X 1-1/2" CAP SCREW	2
15	721-100	1/2" X 1-1/2" X 1-1/2" CAP SCREW	2
16	721-100	1/2" X 1-1/2" X 1-1/2" CAP SCREW	2
17	721-100	1/2" X 1-1/2" X 1-1/2" CAP SCREW	2
18	721-100	1/2" X 1-1/2" X 1-1/2" CAP SCREW	2
19	721-100	1/2" X 1-1/2" X 1-1/2" CAP SCREW	2
20	721-100	1/2" X 1-1/2" X 1-1/2" CAP SCREW	2
21	721-100	1/2" X 1-1/2" X 1-1/2" CAP SCREW	2
22	721-100	1/2" X 1-1/2" X 1-1/2" CAP SCREW	2
23	721-100	1/2" X 1-1/2" X 1-1/2" CAP SCREW	2
24	721-100	1/2" X 1-1/2" X 1-1/2" CAP SCREW	2

NOTE: (LS) = STANDARD SHOE LH
 (RS) = STANDARD SHOE RH
 (LL) = LOCKING SHOE LH
 (RL) = LOCKING SHOE RH

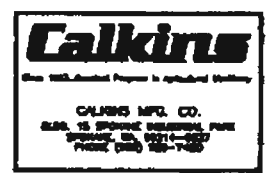


DEPTH STOP LINKAGE ASSEMBLY

REF. No.	PART NUMBER	DESCRIPTION	QTY.
1	5-110-010	1" OD x 3" COMPRESSION SPRING	1
2	5-970-050	3/4" NC ADJUSTMENT SCREW	1
3	7-725-120	3/4" NC NYLON COLLAR LOCK NUT	1
4	7-895-110	3/4" 10 GA NR MACHINE BUSHING	3
5	7-910-145	1/8" x 1-1/4" COTTER PIN	1
6	CW9-018	OUTER DEPTH STOP TUBE	1
7	CW9-019	INNER DEPTH STOP TUBE	1
8	CW9-020	3/4" NC x 7" STRIKER PIN	1



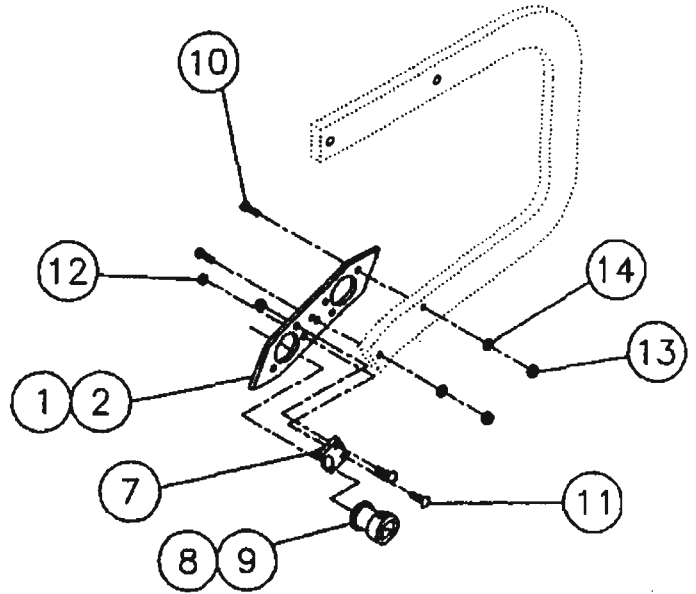
NOTE: (A) = FOUND ON MAIN DRAWING.
 (C) = CLEVIS SIDE OF THE CYLINDER



FORM 1194-08

STANDARD SHOE ASSEMBLY

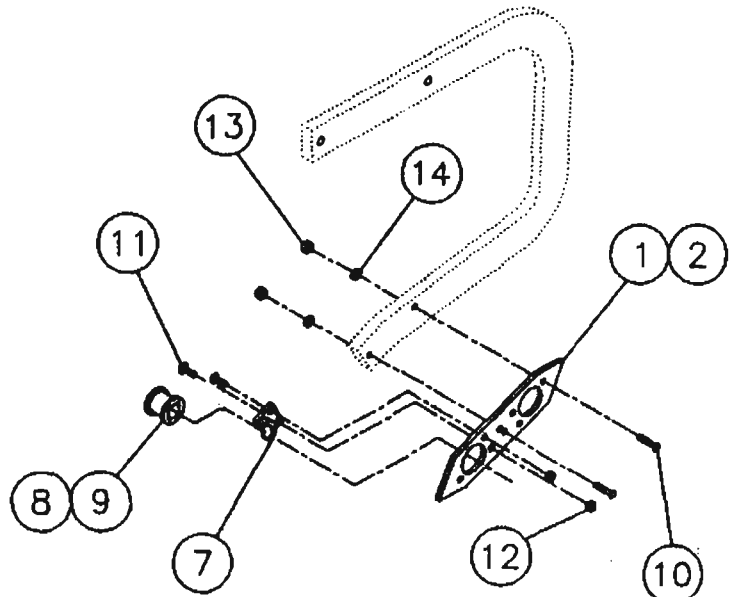
REF. No.	PART NUMBER	DESCRIPTION	QTY.
1	105-062	SHOE FOR GOOSENECK	1
3	105-098L	1" STANDARD SHOE ASSEMBLY LH	3
4	105-098R	1" STANDARD SHOE ASSEMBLY RH	3
5	105-101L	1" LOCKING SHOE ASSEMBLY LH	2
6	105-101R	1" LOCKING SHOE ASSEMBLY	1
7	5-919-612	BLOCK 1/2 CHROME	1
8	5-919-617	SPOOL 1" SQ HI-CHROME	1
9	6-919-355	LOCKING SPOOL ASSY 1" HI-CROME	1
10	7-112-017	7/16" X 2" CAP SCREW	18
11	7-342-012	3/8" X 1-1/2" CARRIAGE BOLT	2
12	7-722-010	3/8" HEX NUT	2
13	7-722-015	7/16" HEX NUT	18
14	7-642-019	7/16" LOCK WASHER	18



RIGHT SHOE

ROCK SHOE ASSEMBLY

REF. No.	PART NUMBER	DESCRIPTION	QTY.
2	105-078	SHOE FOR GOOSENECK	1
3	105-100L	1" ROCK SHOE ASSEMBLY LH	3
4	105-100R	1" ROCK SHOE ASSEMBLY RH	3
5	105-103L	1" LOCKING ROCK SHOE ASSEMBLY LH	2
6	105-103R	1" LOCKING ROCK SHOE ASSEMBLY RH	1
7	5-919-612	BLOCK 1/2 CHROME	1
8	5-919-617	SPOOL 1" SQ HI-CHROME	1
9	6-919-355	LOCKING SPOOL ASSY 1" HI-CROME	1
10	7-112-017	7/16" X 2" CAP SCREW	18
11	7-342-012	3/8" X 1-1/2" CARRIAGE BOLT	2
12	7-722-010	3/8" HEX NUT	2
13	7-722-015	7/16" HEX NUT	18
14	7-642-015	7/16" LOCK WASHER	18



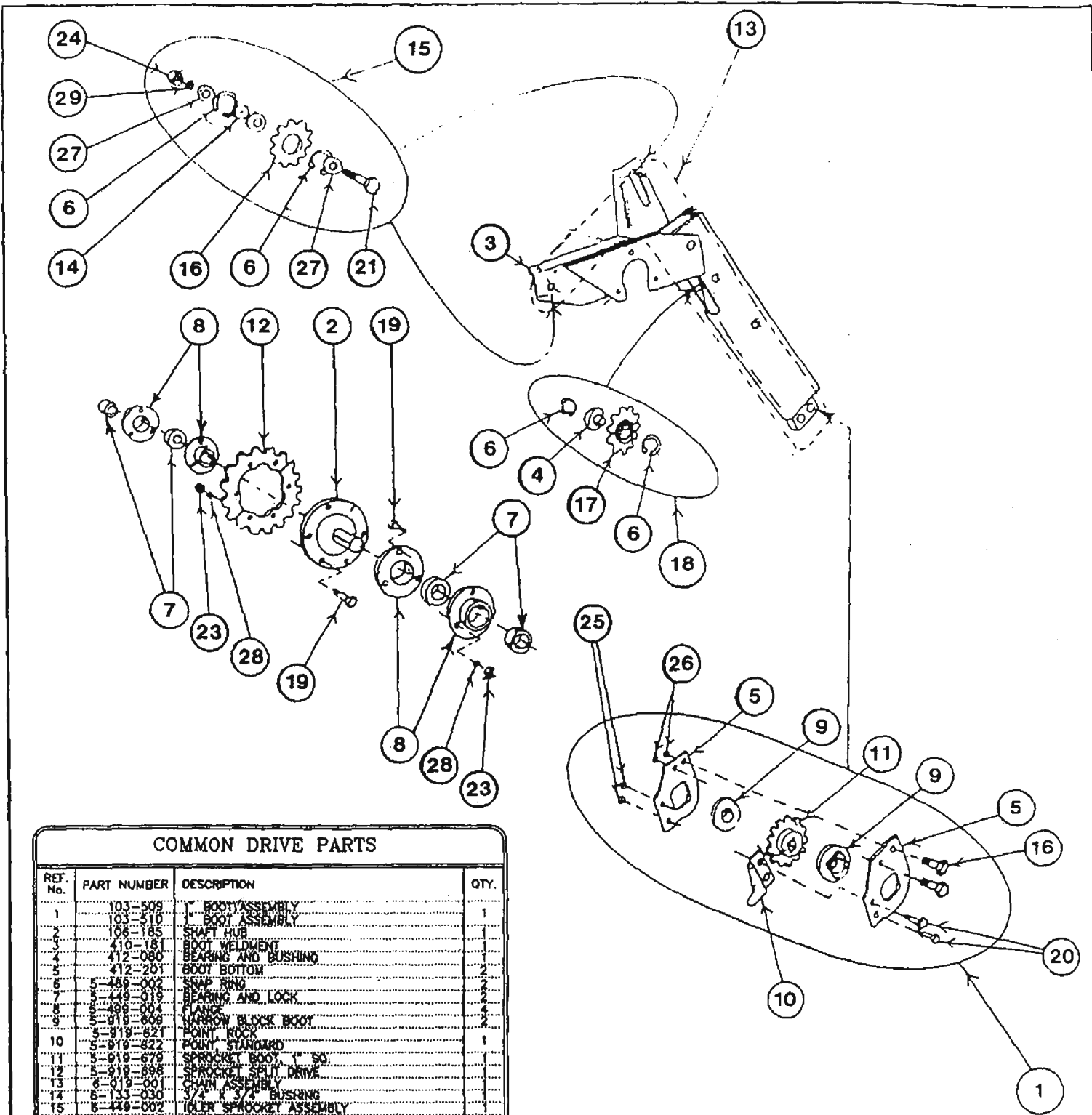
LEFT SHOE

Calkins

Since 1923, Calkins Program in Agricultural Machinery

CALKINS MFG. CO.
BLDG. 18 SPOKANE INDUSTRIAL PARK
SPOKANE, WA. 99214-0627
PHONE (509) 828-7430

FORM 0395-05

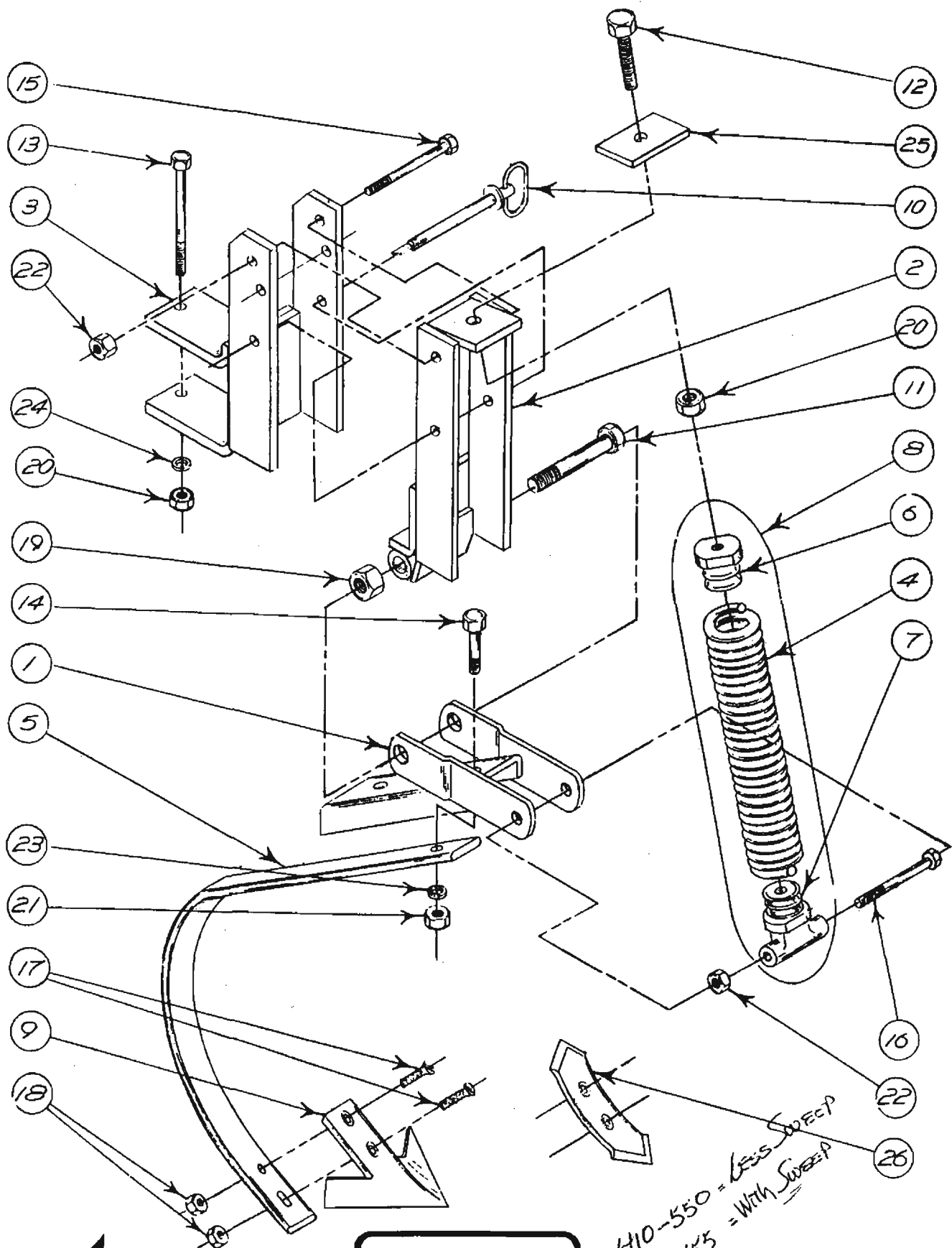


COMMON DRIVE PARTS

REF. No.	PART NUMBER	DESCRIPTION	QTY.
1	103-509	1- BOOT/ASSEMBLY	1
2	103-510	1- BOOT/ASSEMBLY	1
3	106-185	SHAFT HUB	1
4	410-181	BOOT WELDMENT	1
4	412-080	BEARING AND BUSHING	1
5	412-201	BOOT BOTTOM	2
5	5-488-002	SNAP RING	2
7	5-449-019	BEARING AND LOCK	2
8	5-488-004	FLANGE	2
9	5-918-808	NARROW BLOCK BOOT	2
10	5-918-821	POINT ROCK	1
10	5-918-822	POINT STANDARD	1
11	5-918-878	SPROCKET BOOT, 1" SQ.	1
12	5-918-898	SPROCKET SPLIT DRIVE	1
13	6-019-001	CHAIN ASSEMBLY	1
14	6-133-030	1/2" X 3/2" BUSHING	1
15	6-449-002	TOLER SPROCKET ASSEMBLY	1
16	6-448-023	SPROCKET	1
17	8-918-484	SPROCKET W/ER	1
17	8-918-884	DRIVE SPROCKET ASSEMBLY	1
18	7-112-055	3/8" NC X 1-1/4" CAP. SCREW	1
20	7-113-110	1/2" NC X 2" CAP. SCREW	3
21	7-113-111	1/2" NC X 3-1/4" CAP. SCREW	1
22	7-114-108	5/8" NC X 2" CAP. SCREW	2
23	7-722-010	3/8" NC HEX NUT	12
24	7-723-015	1/2" NC HEX NUT	1
25	7-723-101	1/2" NC LOCK NUT	1
26	7-723-118	5/8" NC LOCK NUT	2
27	7-813-015	1/2" FLAT WASHER	8
28	7-842-010	3/8" MEDIUM LOCK WASHER	1
28	7-843-015	1/2" MEDIUM LOCK WASHER	12

Calkins
 Since 1883...Dedicated Progress in Agricultural Machinery
 CALKINS MFG. CO.
 BLDG. 15 SPOKANE INDUSTRIAL PARK
 SPOKANE, WA. 99214-0527
 PHONE (509) 828-7420

ROTATING SHANK ASSEMBLY



CULTA-WEEDER

1500 SERIES
ROD WEEDER

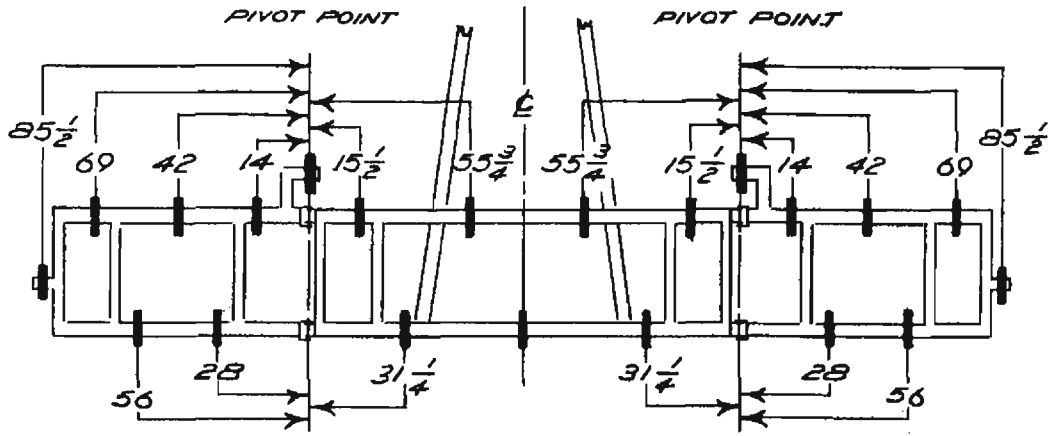
410-550 = LESS SWEEP
 410-555 = WITH SWEEP

MATERIAL LISTING
ROTATING SHANK ASSEMBLY

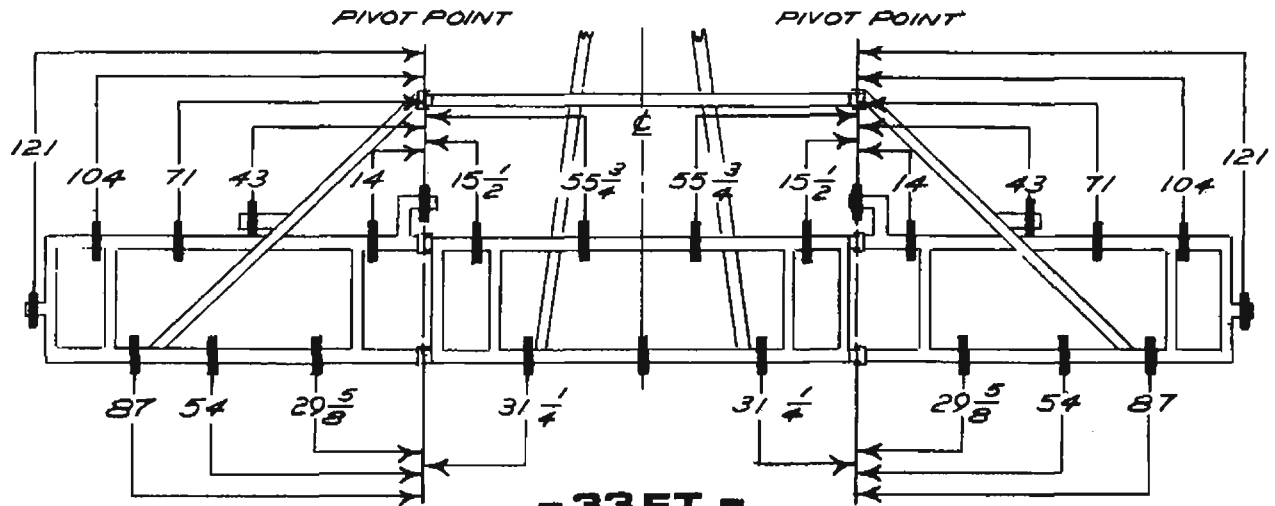
REF. NO.	ITEM DESCRIPTION	PART NO.
1	SHANK MOUNT	201-062
2	SPRING MOUNT	410-055
3	ROTATION MOUNT	410-054
4	SPRING	5-123-002
5	SHANK	5-939-003
6	INSERT, TOP	6-919-050
7	INSERT, BOTTOM	6-919-051
8	SPRING WITH INSERTS	6-123-002
9	SWEEP BLADE	
	1/4 x 9	5-952-616
	1/4 x 9 HARD SURFACED	5-952-618
10	LOCK PIN	7-920-012
11	3/4-16 NF x 5", CS, MECH PL	7-115-067
12	1/2-13 NC x 3", CS, FULL THRD	7-113-136
13	1/2-13 NC x 5-1/2", CS	7-113-129
14	5/8-11 NC x 2", CS	7-114-006
15	1/2-13 NC x 4-1/2", CS	7-113-124
16	1/2-13 NC x 3-3/4", CS	7-113-121
17	7/16 NC x 1-1/2" NO. 3 PLOW BOLT (USED ON REVERSIBLE POINT AND 1/4" SWEEPS)	7-272-058
18	7/16 NC, HEX NUT	7-722-015
19	3/4-16 NF, TOP LOCK NUT PL	7-725-122
20	1/2-13 NC, HEX NUT	7-723-015
21	5/8-11 NC, HEX NUT	7-724-005
22	1/2-13 NC, CONE LOCK NUT	7-723-100
23	5/8 MED LOCK WASHER	7-844-020
24	1/2 MED LOCK WASHER	7-843-015
25	ROTATION STOP PLATE	410-133
26	REVERSIBLE BOLT ON POINT SHANK LOWERING BRACKET	5-949-012 410-164

5952-625

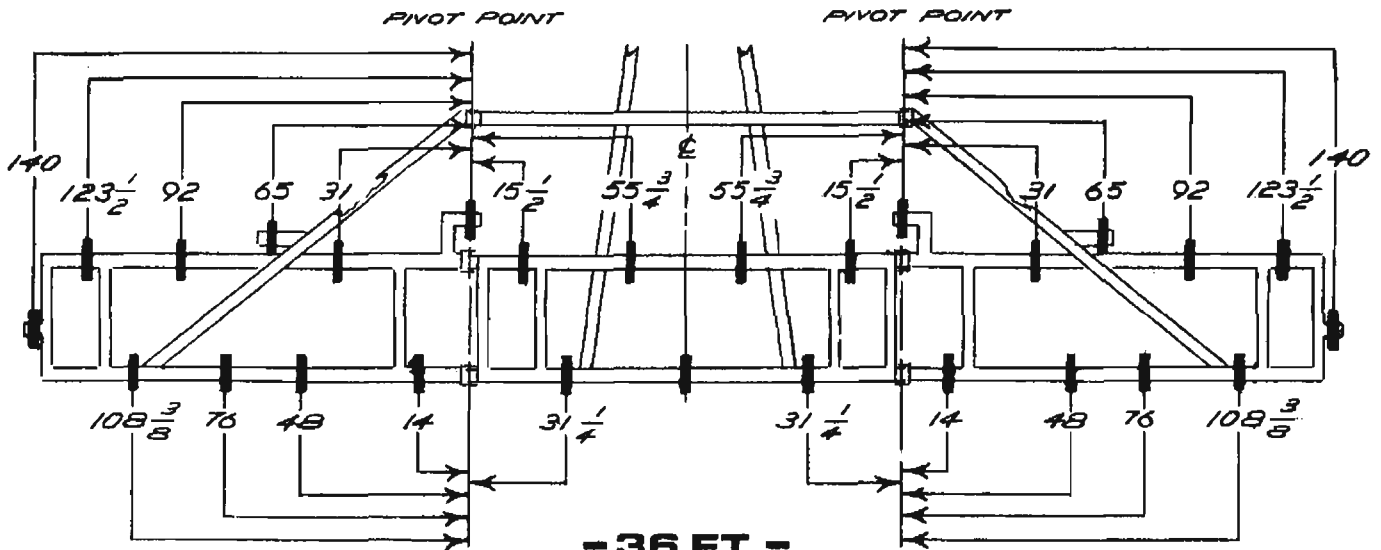
SHANK LAYOUT



-26 FT.-



-33 FT.-



-36 FT.-



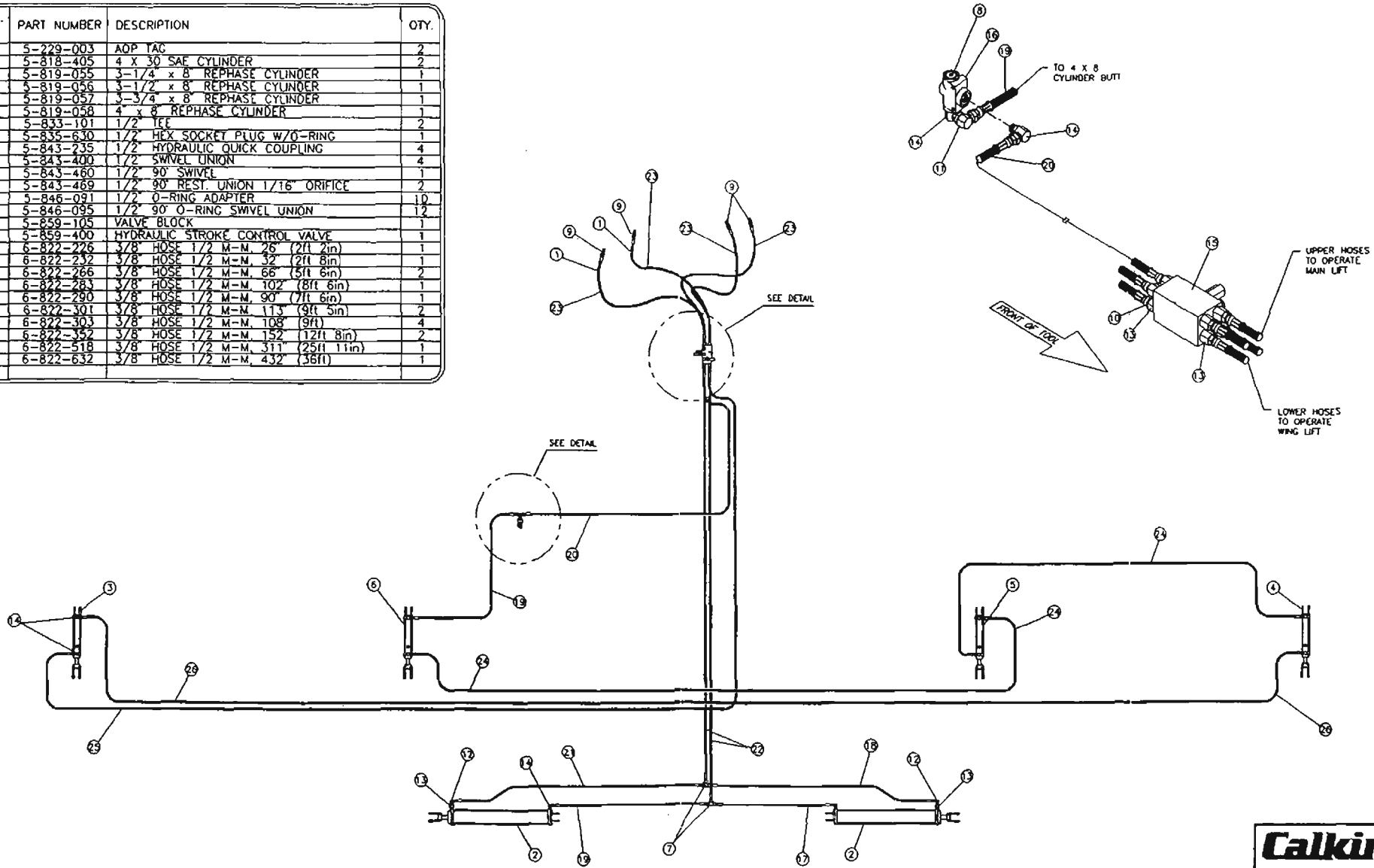
CULTA-WEEDER

1500 SERIES
ROD WEEDER

3 SECTION CULTA~WEEDER HYDRAULIC LAYOUT

(with stiff tongue)

REF. No.	PART NUMBER	DESCRIPTION	QTY.
1	5-229-003	AOP TAC	2
2	5-818-405	4 x 30 SAE CYLINDER	2
3	5-819-055	3-1/4 x 8 REPHASE CYLINDER	1
4	5-819-056	3-1/2 x 8 REPHASE CYLINDER	1
5	5-819-057	3-3/4 x 8 REPHASE CYLINDER	1
6	5-819-058	4 x 8 REPHASE CYLINDER	1
7	5-833-101	1/2 TEE	2
8	5-835-630	1/2 HEX SOCKET PLUG W/O-RING	1
9	5-843-235	1/2 HYDRAULIC QUICK COUPLING	4
10	5-843-400	1/2 SWIVEL UNION	4
11	5-843-460	1/2 90° SWIVEL	1
12	5-843-469	1/2 90° REST UNION 1/16" ORIFICE	2
13	5-846-091	1/2 O-RING ADAPTER	10
14	5-846-095	1/2 90° O-RING SWIVEL UNION	12
15	5-859-105	VALVE BLOCK	1
16	5-859-400	HYDRAULIC STROKE CONTROL VALVE	1
17	6-822-226	3/8 HOSE 1/2 M-M, 26 (2ft 2in)	1
18	6-822-232	3/8 HOSE 1/2 M-M, 32 (2ft 8in)	1
19	6-822-266	3/8 HOSE 1/2 M-M, 66 (5ft 6in)	2
20	6-822-283	3/8 HOSE 1/2 M-M, 102 (8ft 6in)	1
21	6-822-290	3/8 HOSE 1/2 M-M, 90 (7ft 6in)	1
22	6-822-301	3/8 HOSE 1/2 M-M, 113 (9ft 5in)	2
23	6-822-303	3/8 HOSE 1/2 M-M, 108 (9ft)	4
24	6-822-352	3/8 HOSE 1/2 M-M, 152 (12ft 8in)	2
25	6-822-518	3/8 HOSE 1/2 M-M, 311 (25ft 11in)	1
26	6-822-632	3/8 HOSE 1/2 M-M, 432 (36ft)	1



Calkins

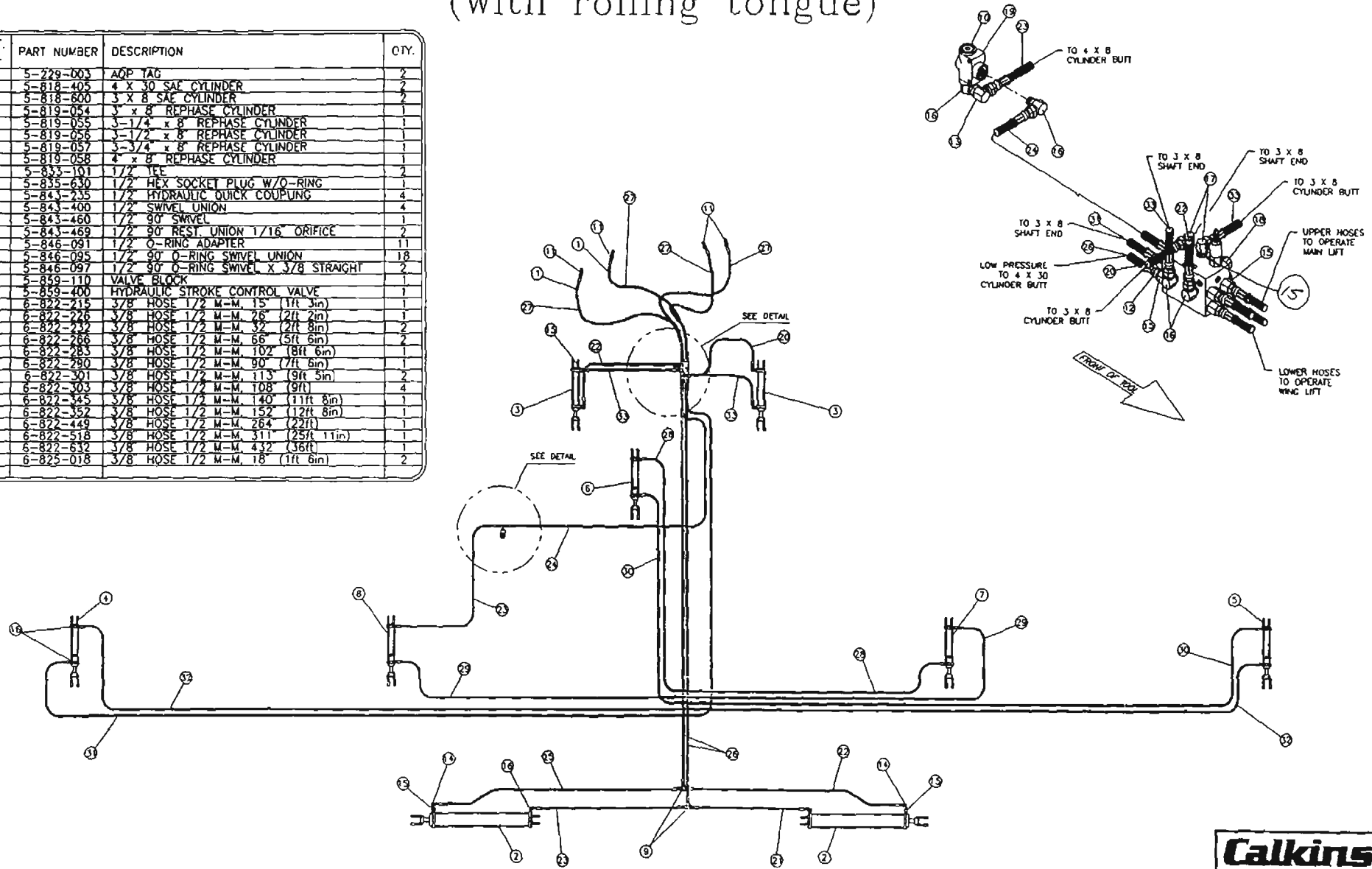
Since 1923, Constant Progress in Agricultural Machinery

CALKINS MFG. CO.
BLDG. 15 SPOKANE INDUSTRIAL PARK
SPOKANE, WA, 99214-0027
PHONE (509) 928-7420

3 SECTION CULTA~WEEDER HYDRAULIC LAYOUT

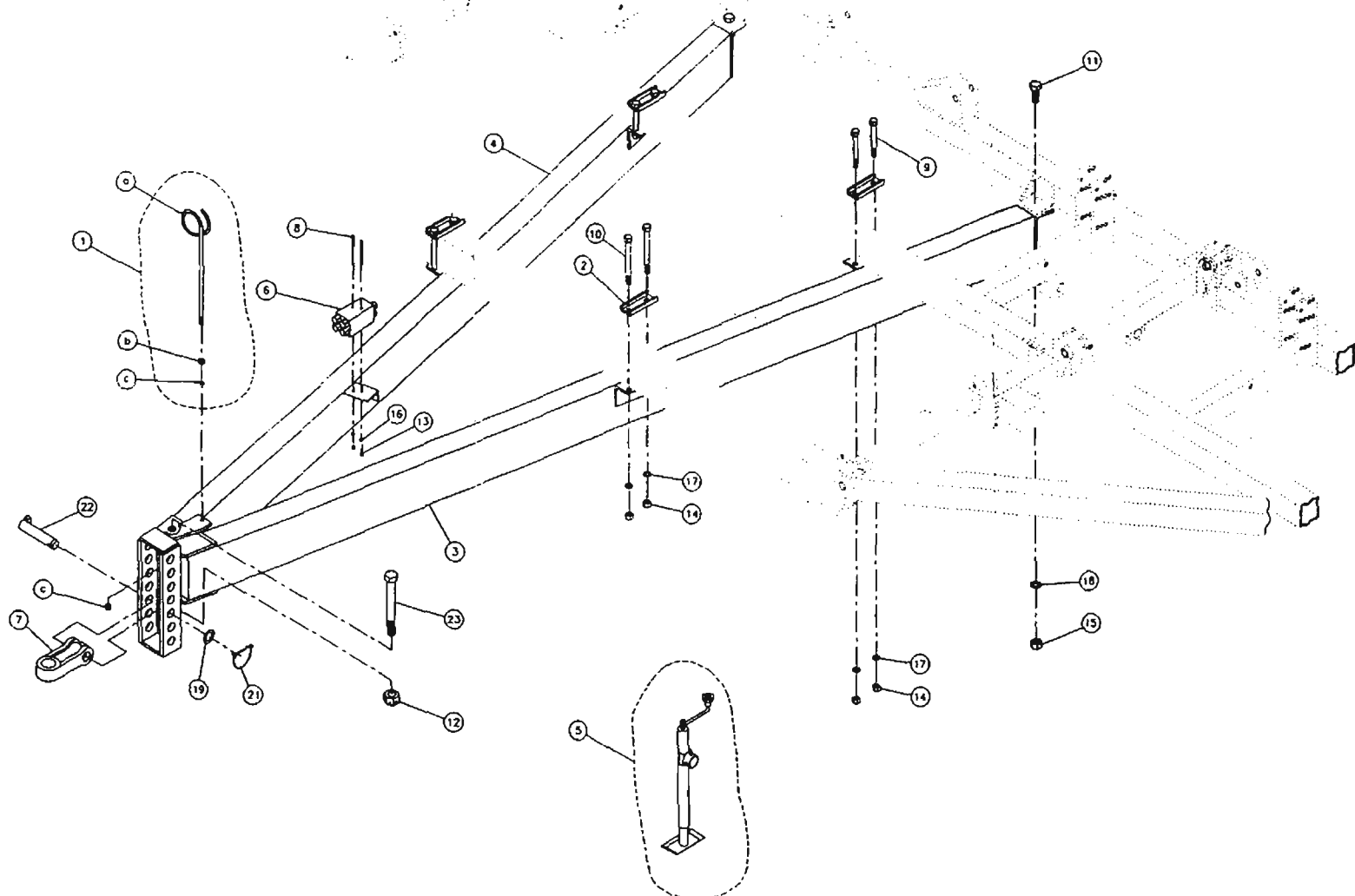
(with rolling tongue)

REF. No.	PART NUMBER	DESCRIPTION	QTY.
1	5-229-603	AOP TAG	2
2	5-818-405	4 X 30 SAF CYLINDER	2
3	5-818-600	3 X 8 SAF CYLINDER	2
4	5-819-054	3 X 8 REPHASE CYLINDER	1
5	5-819-055	3-1/4 X 8 REPHASE CYLINDER	1
6	5-819-056	3-1/2 X 8 REPHASE CYLINDER	1
7	5-819-057	3-3/4 X 8 REPHASE CYLINDER	1
8	5-819-058	4 X 8 REPHASE CYLINDER	1
9	5-835-101	1/2" TEE	2
10	5-835-630	1/2" HEX SOCKET PLUG W/O-RING	1
11	5-843-235	1/2" HYDRAULIC QUICK COUPLING	4
12	5-843-400	1/2" SWIVEL UNION	4
13	5-843-460	1/2" 90° SWIVEL	1
14	5-843-469	1/2" 90° REST UNION 1/16" ORIFICE	2
15	5-846-091	1/2" O-RING ADAPTER	11
16	5-846-095	1/2" 90° O-RING SWIVEL UNION	18
17	5-846-097	1/2" 90° O-RING SWIVEL X 3/8 STRAIGHT	2
18	5-859-110	VALVE BLOCK	1
19	5-859-400	HYDRAULIC STROKE CONTROL VALVE	1
20	6-822-215	3/8 HOSE 1/2" M-M 15' (1ft 3in)	1
21	6-822-226	3/8 HOSE 1/2" M-M 26' (2ft 2in)	1
22	6-822-232	3/8 HOSE 1/2" M-M 32' (2ft 8in)	2
23	6-822-266	3/8 HOSE 1/2" M-M 66' (5ft 6in)	2
24	6-822-283	3/8 HOSE 1/2" M-M 102' (8ft 6in)	1
25	6-822-290	3/8 HOSE 1/2" M-M 90' (7ft 8in)	1
26	6-822-301	3/8 HOSE 1/2" M-M 113' (9ft 5in)	2
27	6-822-303	3/8 HOSE 1/2" M-M 108' (9ft)	4
28	6-822-345	3/8 HOSE 1/2" M-M 140' (11ft 8in)	1
29	6-822-352	3/8 HOSE 1/2" M-M 152' (12ft 8in)	1
30	6-822-449	3/8 HOSE 1/2" M-M 264' (22ft)	1
31	6-822-518	3/8 HOSE 1/2" M-M 311' (25ft 11in)	1
32	6-822-632	3/8 HOSE 1/2" M-M 432' (36ft)	1
33	6-825-018	3/8 HOSE 1/2" M-M 18' (1ft 6in)	2



Calkins
Since 1933, Calkins Pioneers in Agricultural Machinery

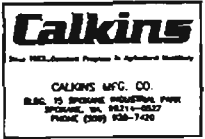
CALKINS MFG. CO.
 BLDG. 15 SPOKANE INDUSTRIAL PARK
 SPOKANE, WA. 99214-0027
 PHONE (509) 928-7420



STIFF TONGUE KIT

REF. No.	PART NUMBER	DESCRIPTION	QTY.
1	101-037	HYDRAULIC HOSE MAST ASSEMBLY	1
2	106-211	HYDRAULIC HOSE MAST	1
3	7-721-015	1/2" IN. HEX NUT	2
4	7-841-015	1/2" IN. LOCK WASHER	2
5	206-031	CLAMP PLATE 4" SPAN 1/4" BOLTS	4
6	7-111-006	TONGUE LH	1
7	7-111-006	TONGUE RH	1
8	7-128-051	TONGUE JACK PARM	1
9	7-129-105	VALVE BLOCK	1
10	7-111-006	TONGUE LH	1
11	7-115-078	1/2" IN. 2 1/2" CAP SCREW	2
12	7-721-240	1/2" IN. SLOTTED NUT	2
13	7-721-805	1/2" IN. HEX NUT	2
14	7-728-002	1/2" IN. HEX NUT	2
15	7-728-002	1/2" IN. HEX NUT	2
16	7-841-015	1/2" IN. LOCK WASHER	2
17	7-841-015	1/2" IN. LOCK WASHER	2
18	7-841-015	1/2" IN. LOCK WASHER	2
19	7-841-015	1/2" IN. LOCK WASHER	2
20	7-111-006	10 GA. IN. MACHINE BUSHING	1
21	7-111-006	10 GA. IN. MACHINE BUSHING	1
22	7-111-006	10 GA. IN. MACHINE BUSHING	1
23	7-116-006	1/4" IN. 10-17/8" DRILLED BOLT	1

NOTE: SECURE EACH SLOTTED NUT WITH ONE (1) 3/16" COTTER PIN AFTER ADJUSTMENT.



FORM 0894-02