

Calkins

CHISEL PLOW

3 SECTION

25 ft. & 29 ft.

Parts Manual

J.E. LOVE COMPANY

LOVE®

309 W. CALIFORNIA STREET
P.O. BOX 188
GARFIELD, WASHINGTON 99130-0188
(509) 635-1321 FAX: (509) 635-1434
www.jeloveco.com

PRINTED IN U.S.A

002CP-10/06

Caution

Block Securely

Do not place yourself under any equipment suspended hydraulically, with mechanical stops, jacks or hoists, without blocking securely.



Table of Contents

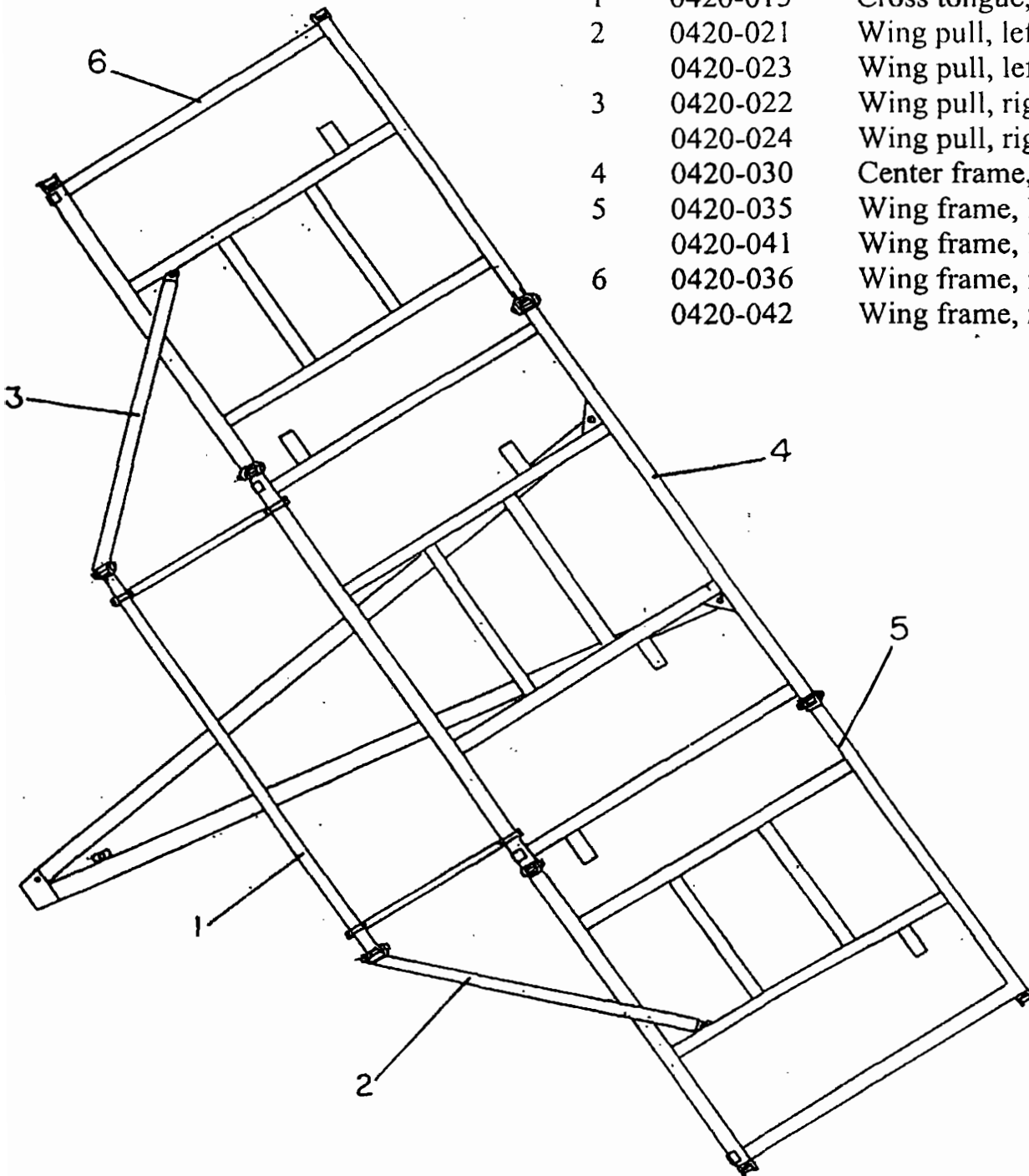
Title	Page
Caution/Warning -----	1
Table of Contents -----	2,3
Frame layout -----	4
Center frame -----	5,6
Tongue	
Cross tongue	
Wing frame, left -----	7,8
Wing pull, left	
Wing frame, right -----	9,10
Wing pull, right	
Tandem wheel leg assemblies, 6 bolt -----	11,12
Tandem wheel legs -----	13,14
Walking beams	
6 bolt hubs and spindles	
Single wheel leg assemblies -----	15,16
Depth stop kit -----	17,18
Tandem wheel legs	
Adjustable linkage	
Adjustable linkage assembly -----	19,20
Hydraulic cylinders	
Cylinder locks	
Main lift system hydraulic components, 29ft. -----	21,22
Main lift system hydraulic components, 25ft. -----	23,24
Wing lift components, center frame -----	25,26
Hydraulic components -----	27,28
Wing lift center frame	
Wing lift components, Left wing -----	29,30
Wing lift components, Right wing -----	31,32
Center frame transport latch -----	33, 34
Shank layout, 25ft. -----	35,36

Table of Contents

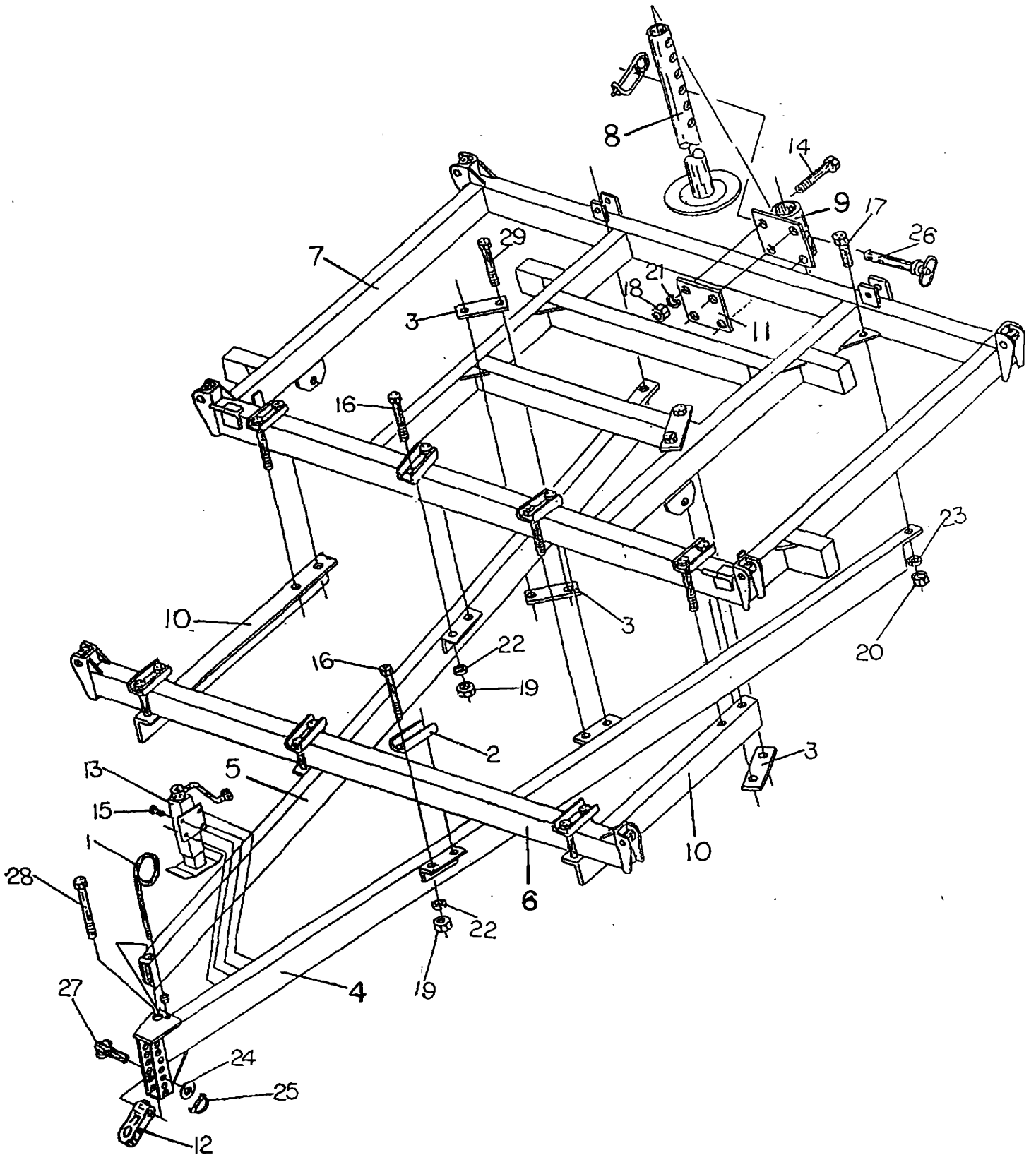
Title	Page
Shank layout, 29ft. -----	37,38
Forward shank mount -----	39,40
Stiff shank assembly -----	41,42
Spring shank assembly -----	43,44
Part number page reference -----	A1, A6

Frame Layout

Key	Part No.	Description
1	0420-015	Cross tongue, 25ft & 29ft.
2	0420-021	Wing pull, left, 29ft.
	0420-023	Wing pull, left, 25ft.
3	0420-022	Wing pull, right, 29ft.
	0420-024	Wing pull, right, 25ft.
4	0420-030	Center frame, 11ft.
5	0420-035	Wing frame, left, 9ft. (29ft.)
	0420-041	Wing frame, left, 7ft. (25ft.)
6	0420-036	Wing frame, right, 9ft. (29ft.)
	0420-042	Wing frame, right, 7ft. (25ft.)



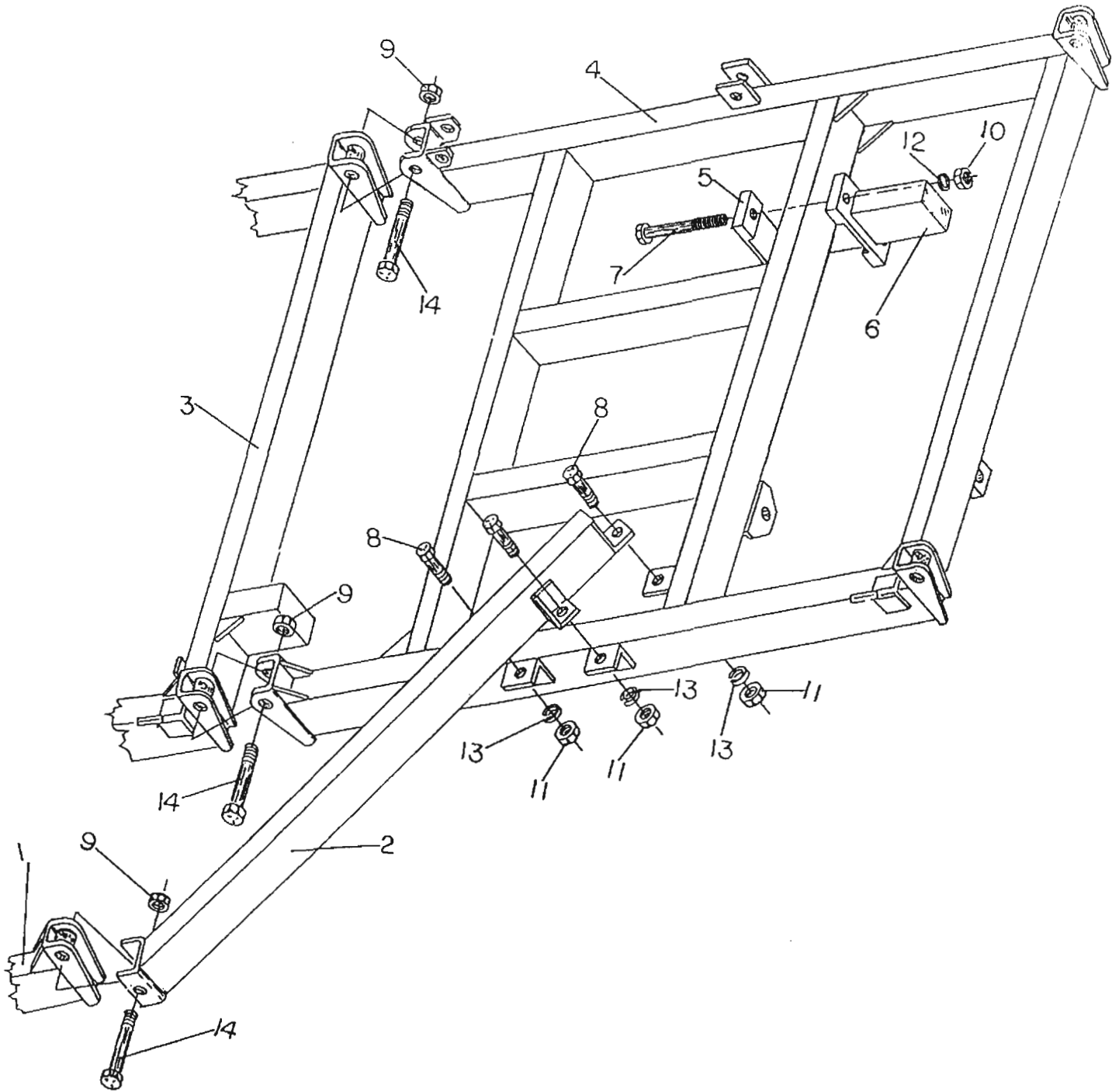
Center frame, Tongue and Cross tongue



Center frame, Tongue and Cross tongue

Key	Part No.	Description
1	0101-037	Hydraulic hose mast assembly
	0106-211	Hydraulic hose mast
	7723-015	Hex nut, 1/2"NC
2	0206-031	Clamp plate, 4" span-3/4" bolts
3	0403-296	Tongue brace plate
4	0420-009	Tongue, left side
5	0420-010	Tongue, right side
6	0420-015	Cross tongue
7	0420-030	Center frame, 11ft.
8	0420-102	Rear stand
9	0420-103	Rear stand adjustment bracket
10	0420-177	Cross tongue brace
11	0420-936	Mounting plate
12	5919-900	Tongue flapper, cast
13	6329-055	Tongue jack
14	7114-055	Cap screw, 5/8"NC x 5 1/2"
15	7114-109	Cap screw, 5/8"NC x 2"
16	7115-080	Cap screw, 3/4"NC x 8"
17	7116-030	Cap screw, 1"NC x 3"
18	7724-005	Hex nut, 5/8"NC
19	7725-002	Hex nut, 3/4"NC
20	7726-005	Hex nut, 1"NC
21	7844-020	Lock washer, 5/8"
22	7845-020	Lock washer, 3/4"
23	7846-020	Lock washer, 1"
24	7896-500	Machine bushing, 1 1/2" x 10 Ga. NR
25	7920-010	Drive line lock pin
26	7920-012	Hitch pin, 1/2" x 4" W/Safety pin
27	8036-025	Pin, tongue flapper, 1 1/2" x 5 1/2"
28	8116-006	Bolt, 1 1/4"NC x 10 1/2", W/7717-255 Nylock nut
29	8115-017	Bolt, 3/4"NC x 16 1/2", W/7717-120 Nylock nut

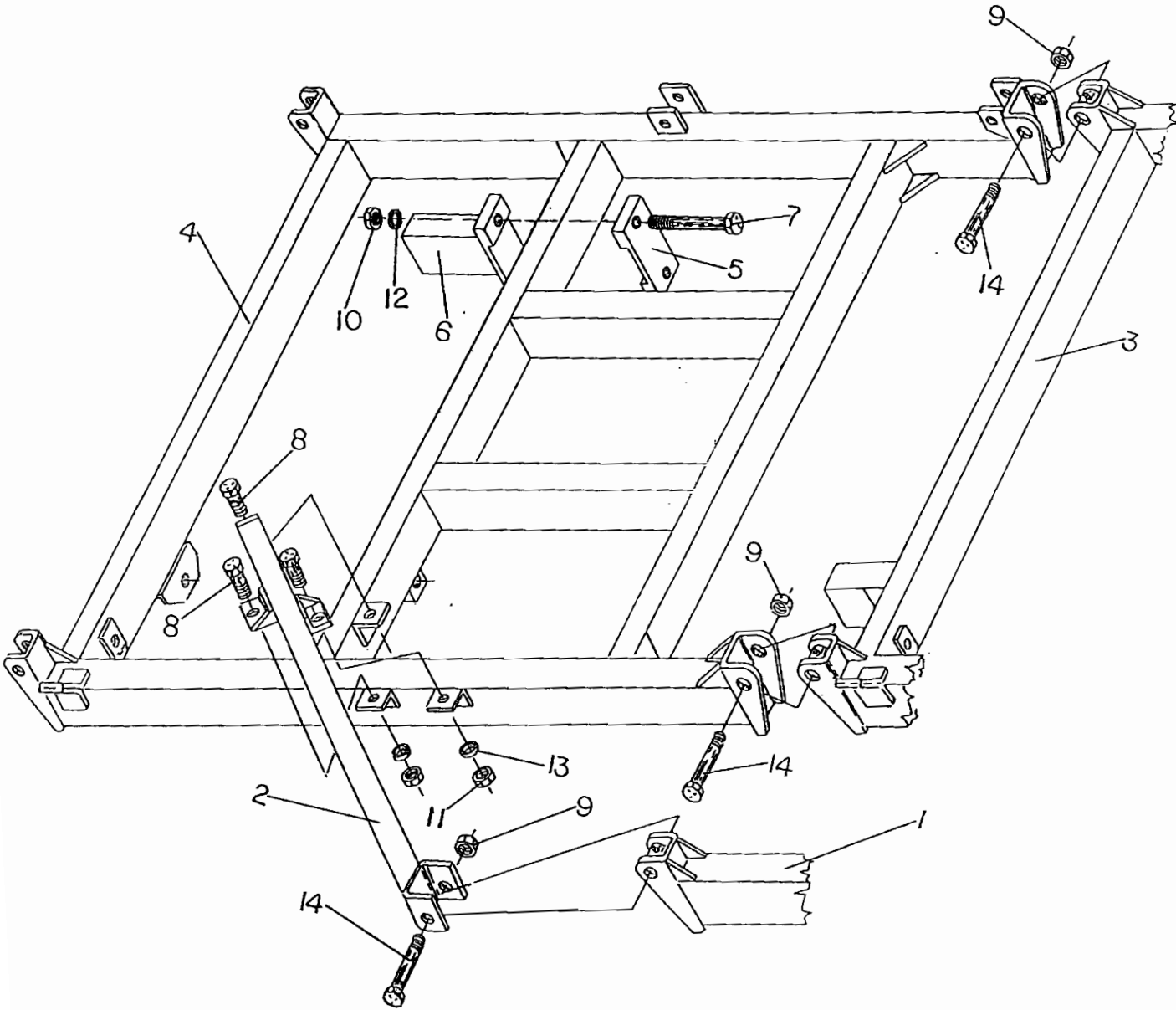
Wing Frame and Wing pull, left



Wing Frame and Wing pull, left

Key	Part No.	Description
1	0420-015	Cross tongue
2	0420-021	Wing pull, left, 85-7/16 (29ft)
	0420-023	Wing pull, left, 71-1/4 (25ft.)
3	0420-030	Center Frame, 11ft.
4	0420-035	Wing Frame, 9ft. left, (29ft.)
	0420-041	Wing Frame, 7ft. left, (25ft.)
5	0420-082	Base plate
6	0420-083	Shank mount, 9"
7	7114-050	Cap screw, 5/8"NC x 5"
8	7116-030	Cap screw, 1"NC x 3"
9	7717-255	Hex Nylock nut, 1-1/4"NC
10	7724-005	Hex nut, 5/8"NC
11	7726-005	Hex nut, 1"NC
12	7844-020	Lock washer, 5/8"
13	7846-020	Lock washer, 1"
14	8116-032	Bolt, 1-1/4"NC x 7" W/7717-255

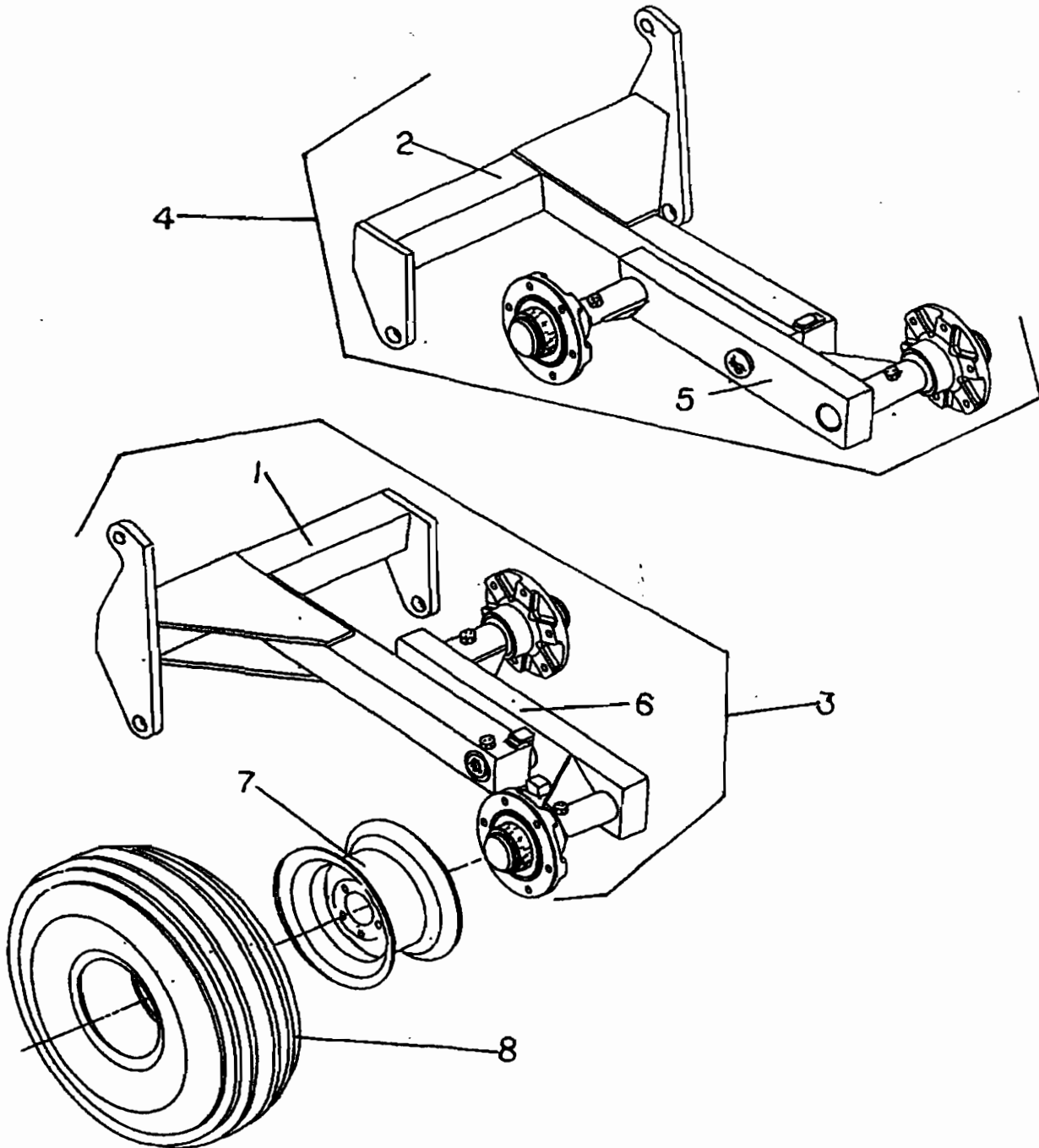
Wing Frame and Wing pull, right



Wing Frame and Wing pull, right

Key	Part No.	Description
1	0420-015	Cross tongue
2	0420-022	Wing pull, right, 85-7/16 (29ft.)
	0420-024	Wing pull, right, 71-1/4 (25ft.)
3	0420-030	Center frame
4	0420-036	Wing frame, right, 9ft. (29ft.)
	0420-042	Wing frame, right, 7ft. (25ft.)
5	0420-082	Base plate
6	0420-083	Shank mount, 9"
7	7114-050	Cap screw, 5/8"NC x 5"
8	7116-030	Cap screw, 1"NC x 3"
9	7717-255	Hex Nylock nut, 1-1/4"NC
10	7724-005	Hex nut, 5/8"NC
11	7726-005	Hex nut, 1"NC
12	7844-020	Lock washer, 5/8"
13	7846-020	Lock washer, 1"
14	8116-032	Bolt, 1-1/4"NC x 7" W/7717-255

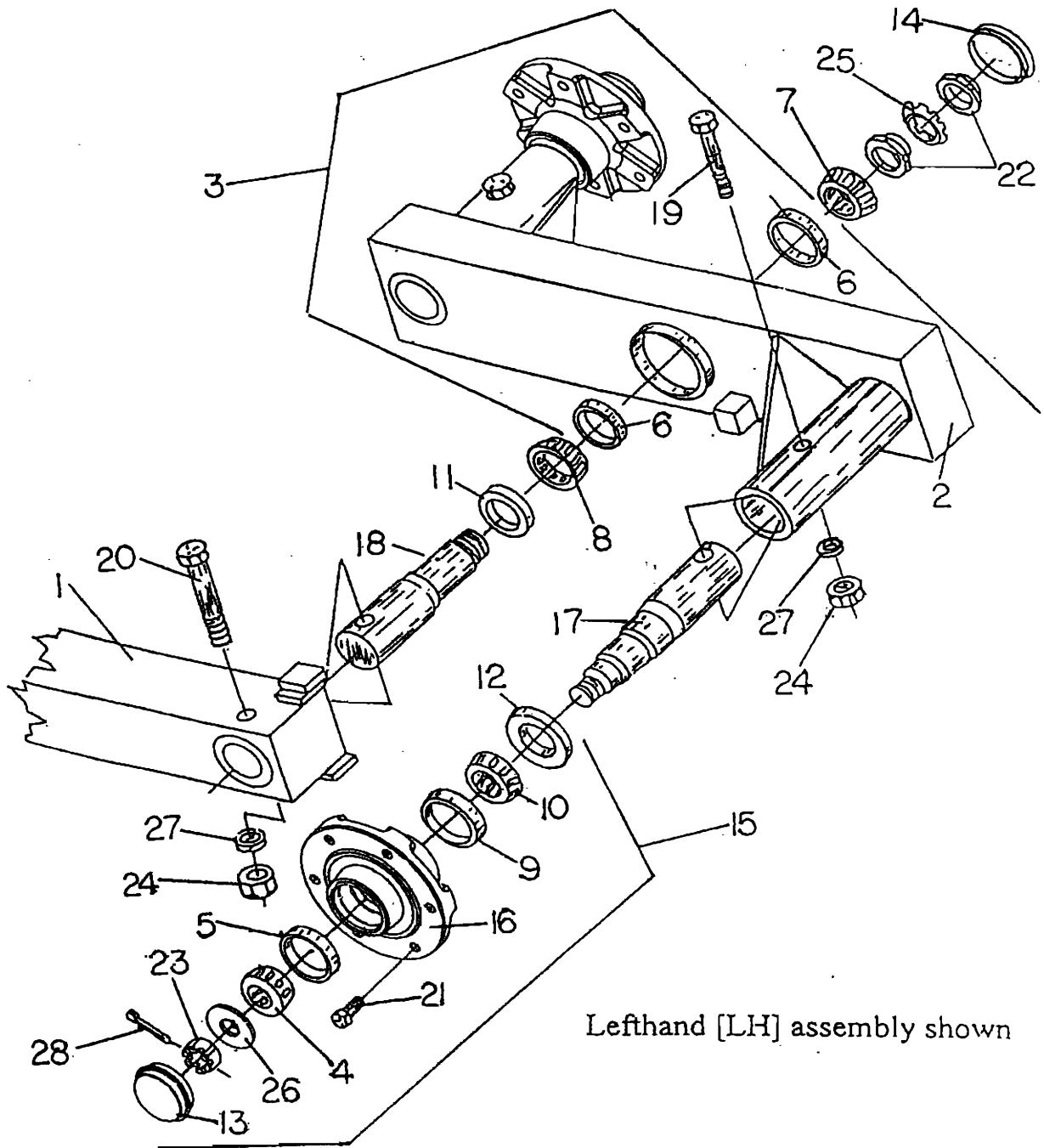
Tandem wheel leg assemblies, 6 bolt hubs



Tandem wheel leg assemblies, 6 bolt hubs

Key	Part No.	Description
1	0420-045	Tandem wheel leg, left
2	0420-046	Tandem wheel leg, right
3	0420-330	Tandem wheel leg assembly, 6 bolt, left
4	0420-335	Tandem wheel leg assembly, 6 bolt, right
5	0420-460	Walking beam assembly, 6 bolt, right
6	0420-480	Walking beam assembly, 6 bolt, left
7	5639-421	Wheel rim, 15 x 8, 6 bolt
8	5649-035	Tire, 12.5 x 15, 8 ply
	5649-062	Tire, 9.5L x 15, 8 ply
	5649-503	Tire, 11L x 15, 8 ply

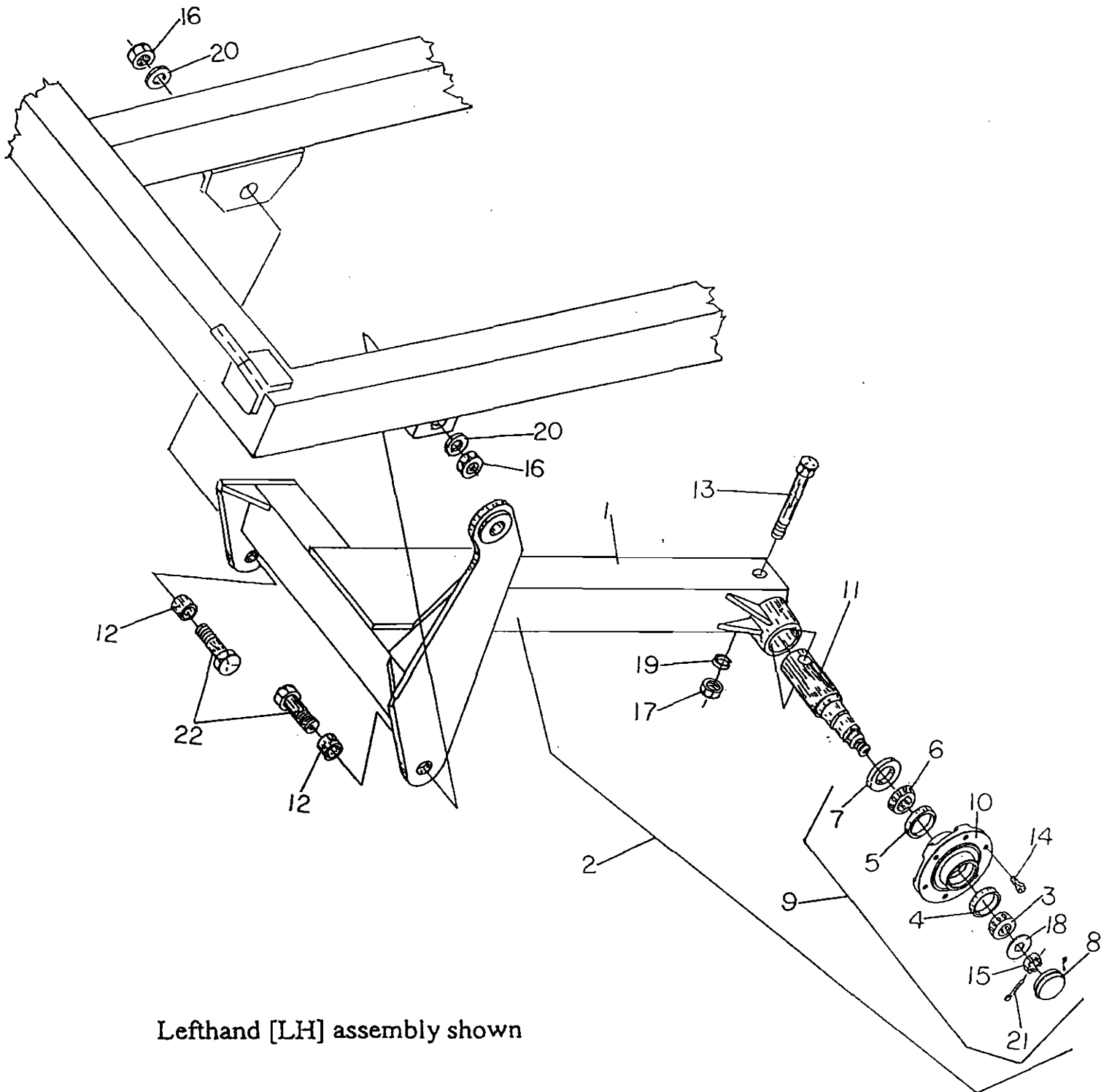
Tandem wheel legs, Walking beams, Hubs & Spindles 6 Bolt Hubs



Tandem wheel legs, Walking beams, Hubs & Spindles 6 Bolt Hubs

Key	Part No.	Description
1	0420-045	Tandem wheel leg, left
	0420-046	Tandem wheel leg, right
2	0420-053	Walking beam, W/5419-125 Cup, left
	0420-054	Walking beam, W/5419-125 Cup, right
3	0420-460	Walking beam assembly, right
	0420-480	Walking beam assembly, left
4	5419-113	Bearing, outer
5	5419-118	Cup, outer
6	5419-125	Cup, bearing race
7	5419-126	Bearing
8	5419-127	Bearing
9	5419-141	Cup, inner
10	5419-142	Bearing cone, inner
11	5439-020	Seal, wheel leg assembly
12	5439-141	Seal, 6 bolt hub
13	5469-006	Hub cap
14	6469-020	Hub cap
15	5619-021	Hub assembly, 6 bolt
16	5619-022	Hub, 6 bolt
17	5629-001	Spindle, 3650, 2-1/8" butt
18	6628-018	Spindle, walking beam
19	7114-040	Cap screw, 5/8"NC x 4"
20	7114-050	Cap screw, 5/8"NC x 5"
21	7333-006	Lug bolt, 1/2"NF x 1"
22	7707-001	Lock nut, N-08
23	7715-875	Slotted nut, 7/8"NF
24	7724-005	Hex nut, 5/8"NC
25	7807-001	Ear washer, W-08
26	7815-014	Flat washer, 7/8" A-325 hardened
27	7844-020	Lock washer, 5/8"
28	7910-162	Cotter pin, 5/32" x 1 1/2"

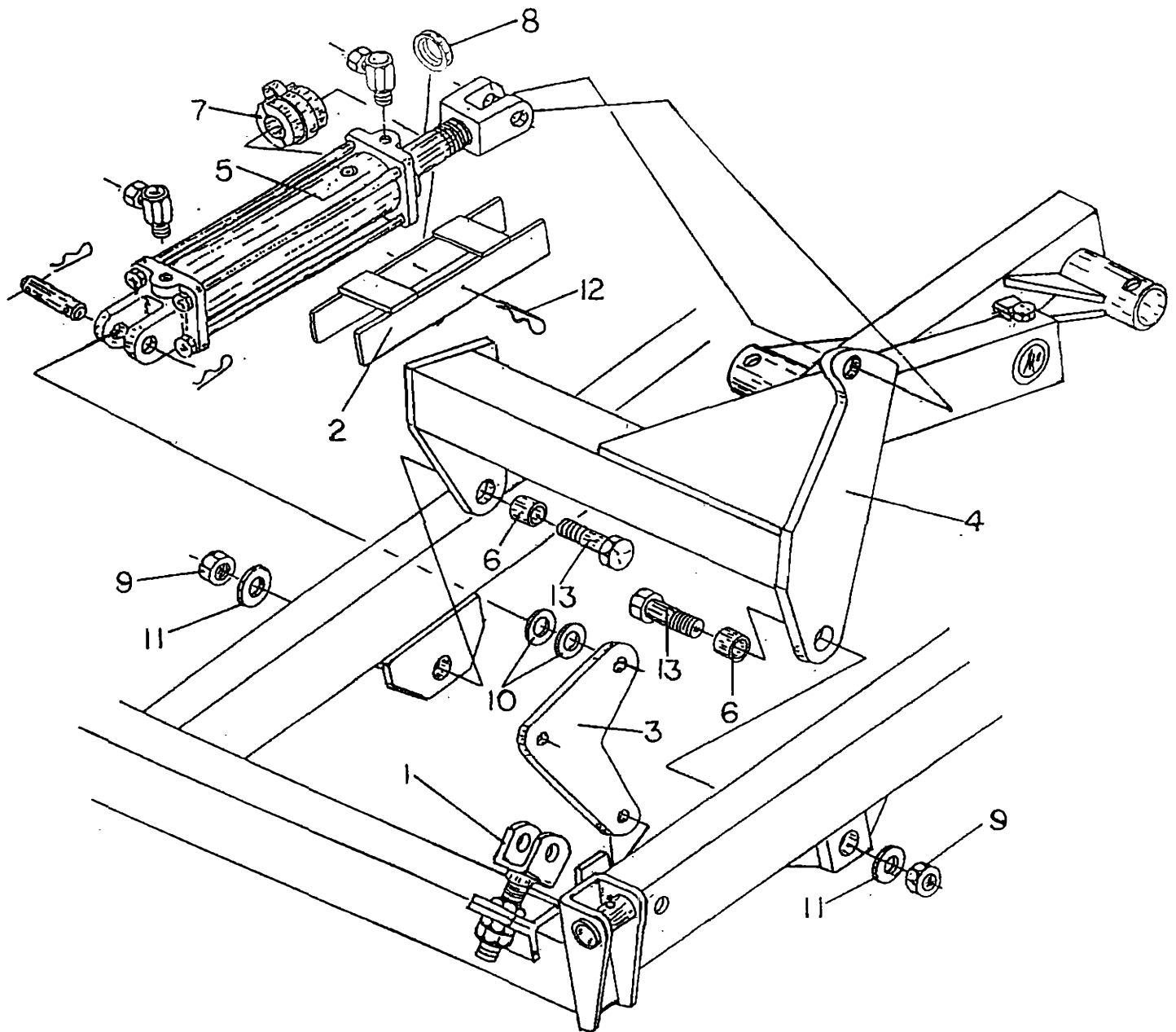
Single wheel leg assemblies



Single wheel leg assemblies

Key	Part No.	Description
1	0420-047	Wheel leg, single wide, left (LH)
	0420-048	Wheel leg, single wide, right (RH)
2	0420-332	Single wheel leg assembly, wide LH
	0420-333	Single wheel leg assembly, wide RH
3	5419-113	Bearing, outer
4	5419-118	Cup, outer
5	5419-141	Cup, inner
6	5419-142	Bearing cone, inner
7	5439-141	Seal, 6 bolt hub
8	5469-006	Hub cap
9	5619-021	Hub assembly, Q-888, 6 bolt
10	5619-022	Hub, 6 bolt
11	5629-001	Spindle, 3650, 2-1/8" butt
12	6136-675	Bushing, 1.75"OD x 1.531"ID x 1.428"
13	7114-050	Cap screw, 5/8"NC x 5"
14	7333-006	Lug bolt, 1/2"NF x 1"
15	7715-875	Slotted nut, 7/8"NF
16	7717-555	Hex NYlock nut, 1-1/2"NC
17	7724-005	Hex nut, 5/8"NC
18	7815-014	Flat washer, 7/8", A-325 Hardened
19	7844-020	Lock washer, 5/8"
20	7896-500	Machine bushing, 1-1/2" x 10 GA. NR
21	7910-162	Cotter pin, 5/32" x 1-1/2"
22	8116-803	Bolt, 1-1/2"NC x 4-1/8", W/7717-555 Nut

Depth stop kit, Tandem wheel legs & Adj. linkage

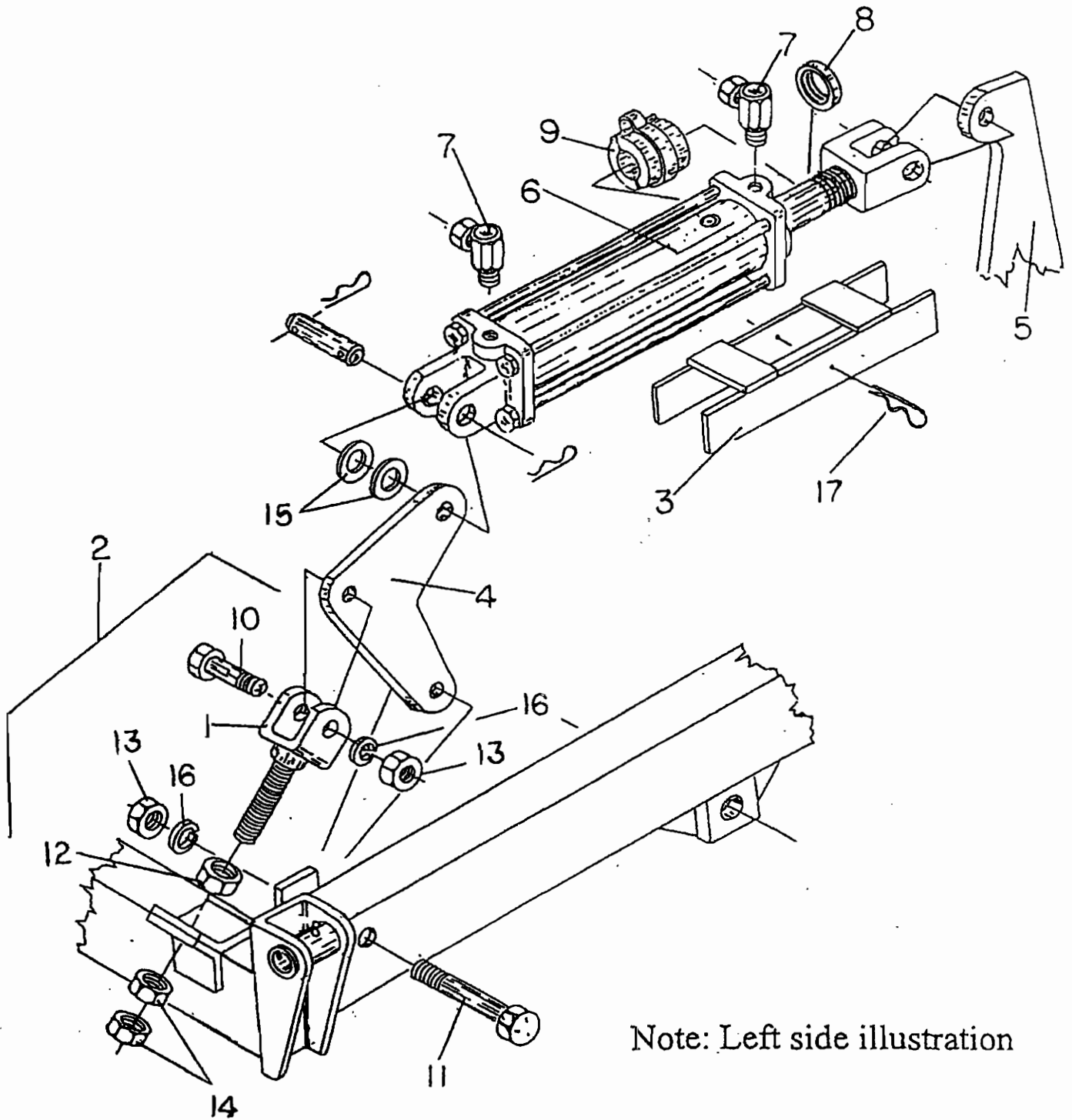


Note: Left side illustration

Depth stop kit, Tandem wheel legs & Adj. linkage

Key	Part No.	Description
1	0410-581	Adjustable linkage assembly
2	0420-108	Cylinder lock, 14-1/2"
	0420-101	Cylinder lock, 14"
3	0420-295	Pivot arm, use W/32" Shank
4	0420-330	Tandem wheel leg assembly, 6 bolt, left (LH)
	0420-335	Tandem wheel leg assembly, 6 bolt, right (RH)
5	---- ----	Hydraulic cylinders
6	6136-675	Bushing, 1.75"OD x 1.531"ID x 1.438"
7	6899-402	Medium size A, Depth stop kit
	6896-100	Depth stop, white 1" Med.
	6896-125	Depth stop, green, 1-1/4" Med.
	6896-150	Depth stop, blue, 1-1/2" Med.
	6896-175	Depth stop, red, 1-3/4" Med.
	6896-200	Depth stop, yellow, 2" Med.
8	6146-014	Cylinder bushing, 5/8" long
9	7717-555	Hex Nylock nut, 1-1/2"NC
10	7816-020	Cut washer, 1"
11	7896-500	Machine bushing, 1-1/2" x 10 Ga.NR
12	7920-002	Hitch pin #8, cylinder lock
13	8116-803	Bolt, 1-1/2"NC x 4-1/8", W/7717-555 Nylock nut

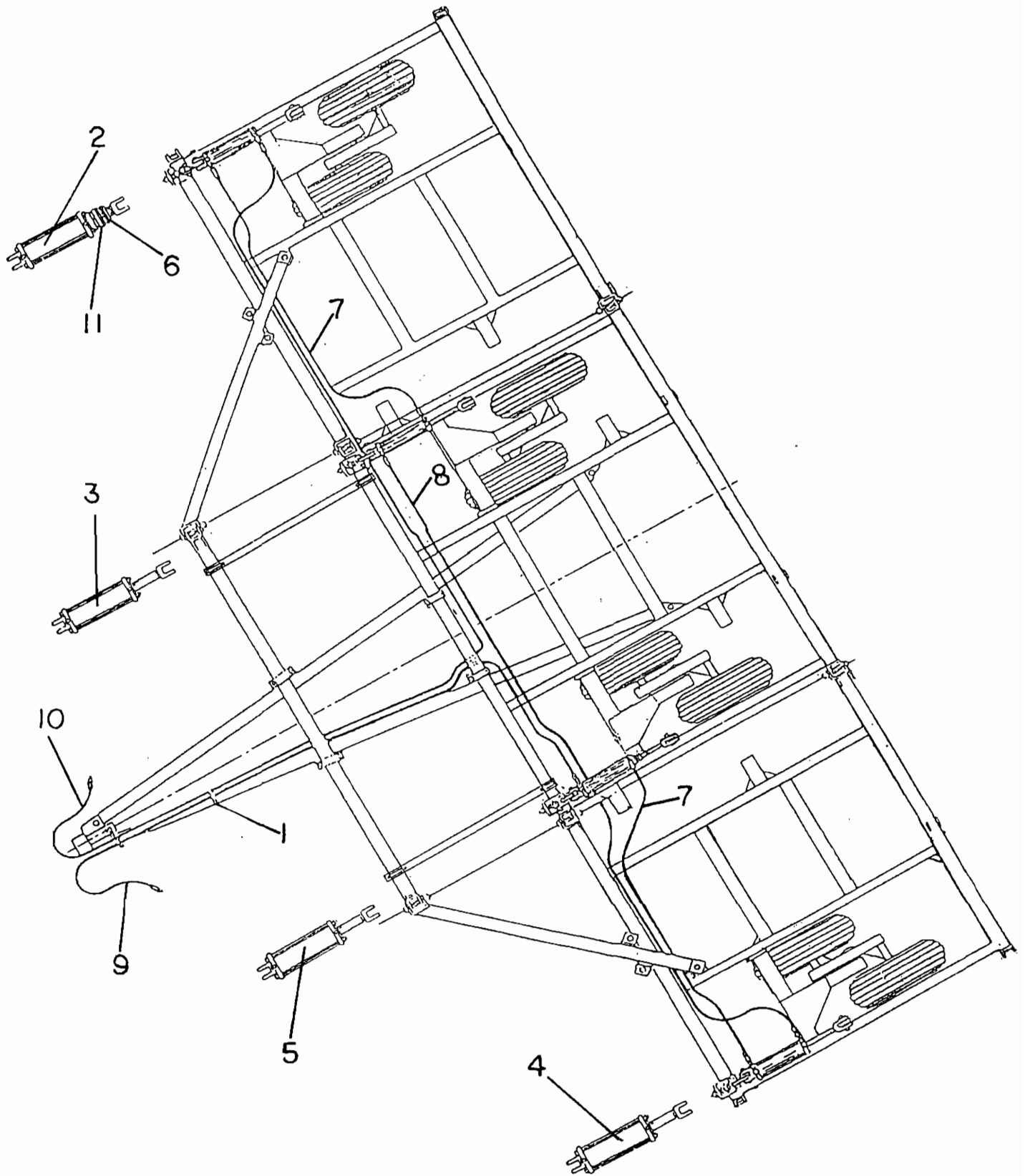
Adj. link assembly, Hydraulic Cylinders & Locks



Adj. link assembly, Hydraulic cylinders & Locks

Key	Part No.	Description
1	0410-121	Adjustable link
2	0410-581	Adjustable link assembly
3	0420-101	Cylinder lock, 14"
	0420-108	Cylinder lock, 14-1/2"
4	0420-295	Pivot arm, use W/32" Shank
5	---- ----	Wheel leg assemblies
6	5819-062	Hydraulic cylinder, 3-1/4" x 12, rephase, right wing
	5819-063	Hydraulic cylinder, 3-1/2" x 12, rephase, center RH
	5819-064	Hydraulic cylinder, 3-3/4" x 12, rephase, left wing
	5819-065	Hydraulic cylinder, 4" x 12, rephase, center LH
7	5846-095	1/2" O-Ring, 90 degree swivel union
8	6146-014	Cylinder bushing, 5/8" long
9	6899-402	Medium size A, Depth stop kit
10	7115-025	Cap screw, 3/4"NC x 2-1/2"
11	7115-050	Cap screw, 3/4"NC x 5"
12	7715-871	Hex nut, 7/8"NC
13	7725-002	Hex nut, 3/4"NC
14	7725-138	Hex jam nut, 7/8"NC
15	7816-020	Cut washer, 1"
16	7845-020	Lock washer, 3/4"
17	7920-002	Hitch pin, #8, Cylinder lock

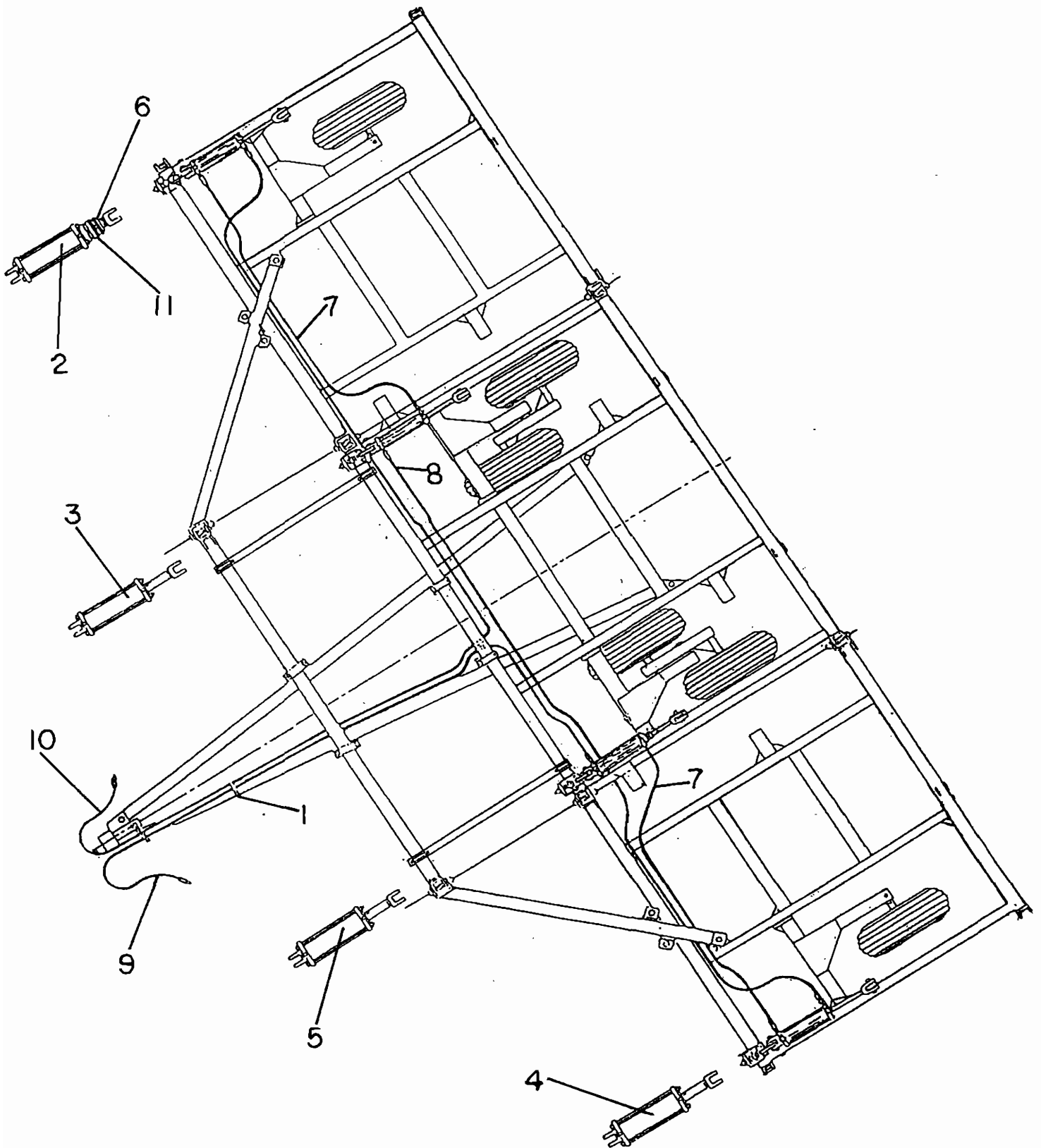
Main lift system hydraulic components



Main lift system hydraulic components

Key	Part No.	Description
1	5229-007	Tyrap, ½ x 28 Panduit
2	5819-062	Hydraulic cylinder, 3-1/4 x 12, Rephase, right wing
3	5819-063	Hydraulic cylinder, 3-1/2 x 12, Rephase, center RH
4	5819-064	Hydraulic cylinder, 3-3/4 x 12, Rephase, left wing
5	5819-065	Hydraulic cylinder, 4 x 12, Rephase, center LH
6	6146-014	Cylinder bushing, 5/8" Long
7	6822-306	Hose, 3/8 x 126 (10'-6") 1/2 M-M
8	6822-443	Hose, 3/8 x 252 (21'-0") 1/2 M-M
9	6822-445	Hose, 3/8 x 258 (21'-6") 1/2
10	6822-535	Hose, 3/8 x 420 (35'-0") 1/2
11	6899-402	Medium size A, Depth stop kit

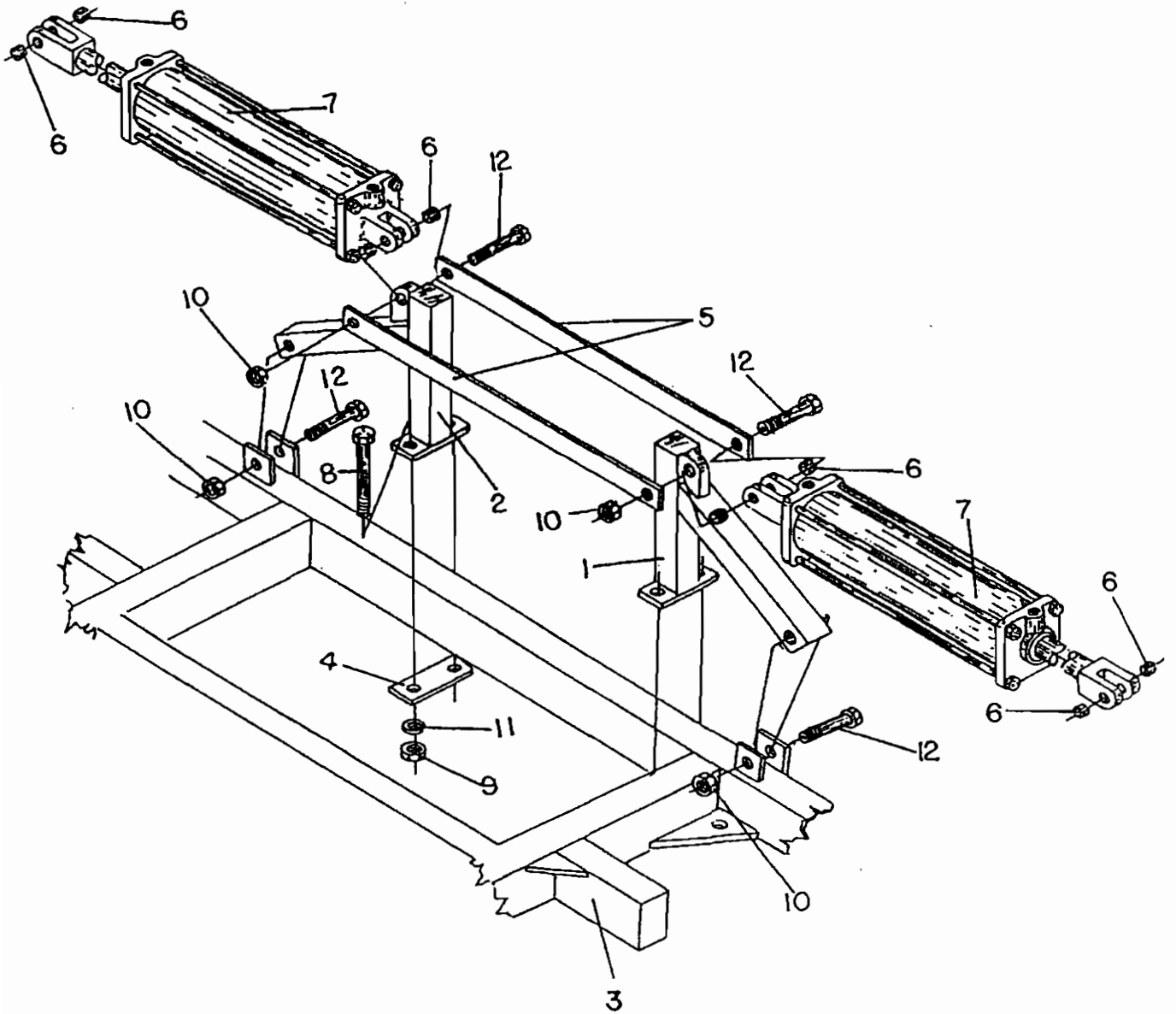
Main lift system hydraulic components



Main lift system hydraulic components

Key	Part No.	Description
1	5229-007	Tyrap, 1/2 x 28 Panduit
2	5819-062	Hydraulic cylinder, 3-1/4 x 12, Rephase, right wing
3	5819-063	Hydraulic cylinder, 3-1/2 x 12, Rephase, center RH
4	5819-064	Hydraulic cylinder, 3-3/4 x 12, Rephase, left wing
5	5819-065	Hydraulic cylinder, 4 x 12, Rephase, center LH
6	6146-014	Cylinder bushing, 5/8" Long
7	6822-283	Hose, 3/8 x 102 1/2 M-M
8	6822-440	Hose, 3/8 x 240 (20'-0") 1/2
9	6822-443	Hose, 3/8 x 252 (21'-0") 1/2
10	6822-629	Hose, 3/8 x 390 (32'-6") 1/2
11	6899-402	Medium size A, Depth stop kit

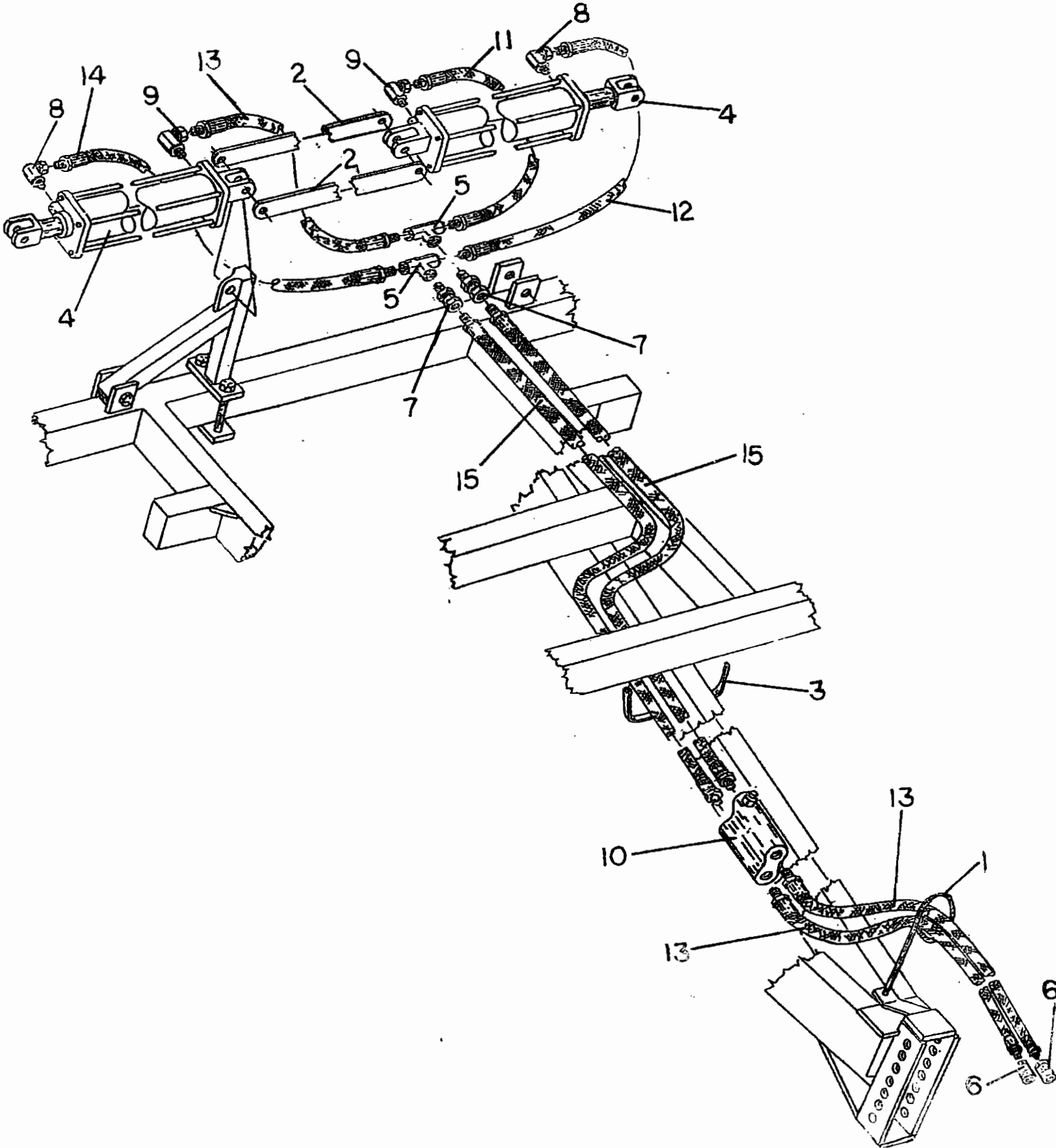
Wing lift components, Center frame



Wing lift components, Center frame

Key	Part No.	Description
1	0410-033	Center support mount, left
2	0410-034	Center support mount, right
3	0420-030	Center frame, 11 ft.
4	0420-293	Mount plate
5	0420-296	Center support bar
6	5818-030	Clevis pin bushing
7	5818-605	Hydraulic cylinder, 4 x 24, AF series
8	7114-080	Cap screw, 5/8"NC x 8"
9	7724-005	Hex nut, 5/8"NC
10	7726-012	Hex Nylock nut, 1"NC
11	7844-020	Lock washer, 5/8"
12	8116-018	Bolt, 1"NC x 5-5/16", Nylock

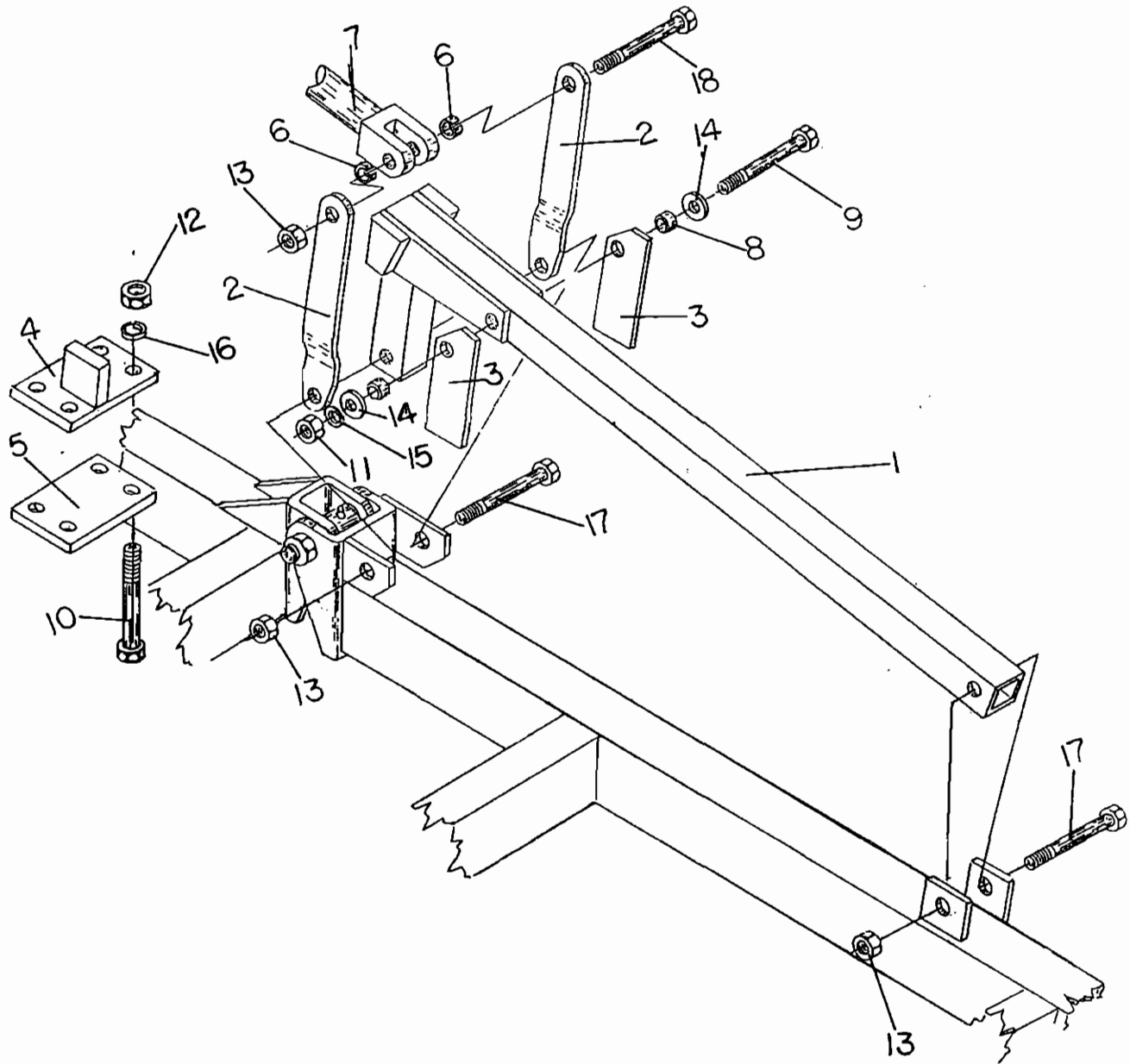
Hydraulic components, Wing lift center frame



Hydraulic components, Wing lift center frame

Key	Part No.	Description
1	0101-037	Hose mast
2	0420-296	Center support bar
3	5229-007	Ty-Rap, 1/2" x 28 Panduit
4	5818-605	Hydraulic cylinder, 4 x 24
5	5833-101	1/2 x 1/2 Tee
6	5843-235	1/2 Hydraulic male quick coupler
7	5843-400	1/2 Straight swivel union
8	5843-469	1/2 90 degree restrictor union, O-Ring
9	5846-095	1/2 90 degree swivel union, O-Ring
10	5859-045	Cushion valve, SRC 11 BD
11	6822-225	Hose, 3/8 x 25-1/2, M-M
12	6822-234	Hose, 3/8 x 34-1/2, M-M
13	6822-272	Hose, 3/8 x 72-1/2, M-M
14	6822-278	Hose, 3/8 x 84-1/2, M-M
15	6822-403	Hose, 3/8 x 210 (17'-6")

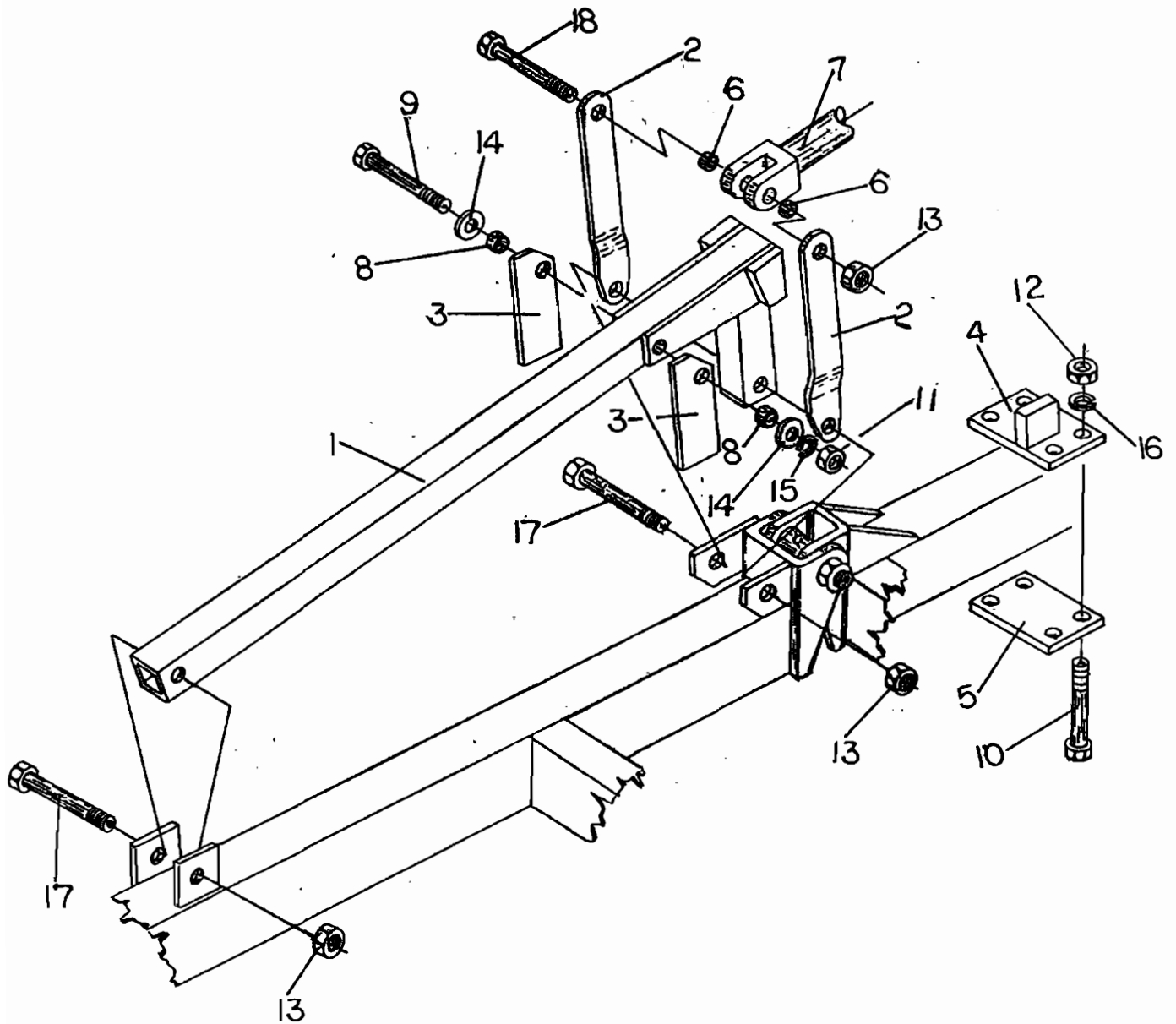
Wing lift components, Left wing



Wing lift components, Left wing

Key	Part No.	Description
1	0400-020	Wing lift, 29 ft. & 37 ft.
	0410-124	Wing lift, 25 ft.
2	0400-032	Toggle, wing lift
3	0410-106	Wing lift stop
4	0420-176	Wing fold stop, left
5	0420-300	Base plate
6	5818-030	Clevis pin bushing
7	5818-605	Hydraulic cylinder, 4 x 24
8	6133-007	Bushing, 0.75"OD x 0.51"ID x 0.438"
9	7113-127	Cap screw, 1/2"NC x 5"
10	7115-080	Cap screw, 3/4"NC x 8"
11	7723-015	Hex nut, 1/2"NC
12	7725-002	Hex nut, 3/4"NC
13	7726-012	Hex Nylock nut, 1"NC
14	7813-015	Flat washer, 1/2"
15	7843-015	Lock washer, 1/2"
16	7845-020	Lock washer, 3/4"
17	8116-003	Bolt, 1"NC x 6-1/4", W/7726-012 Nylock nut
18	8116-601	Bolt, 1"NC x 5-3/4", W/7726-012 Nylock nut

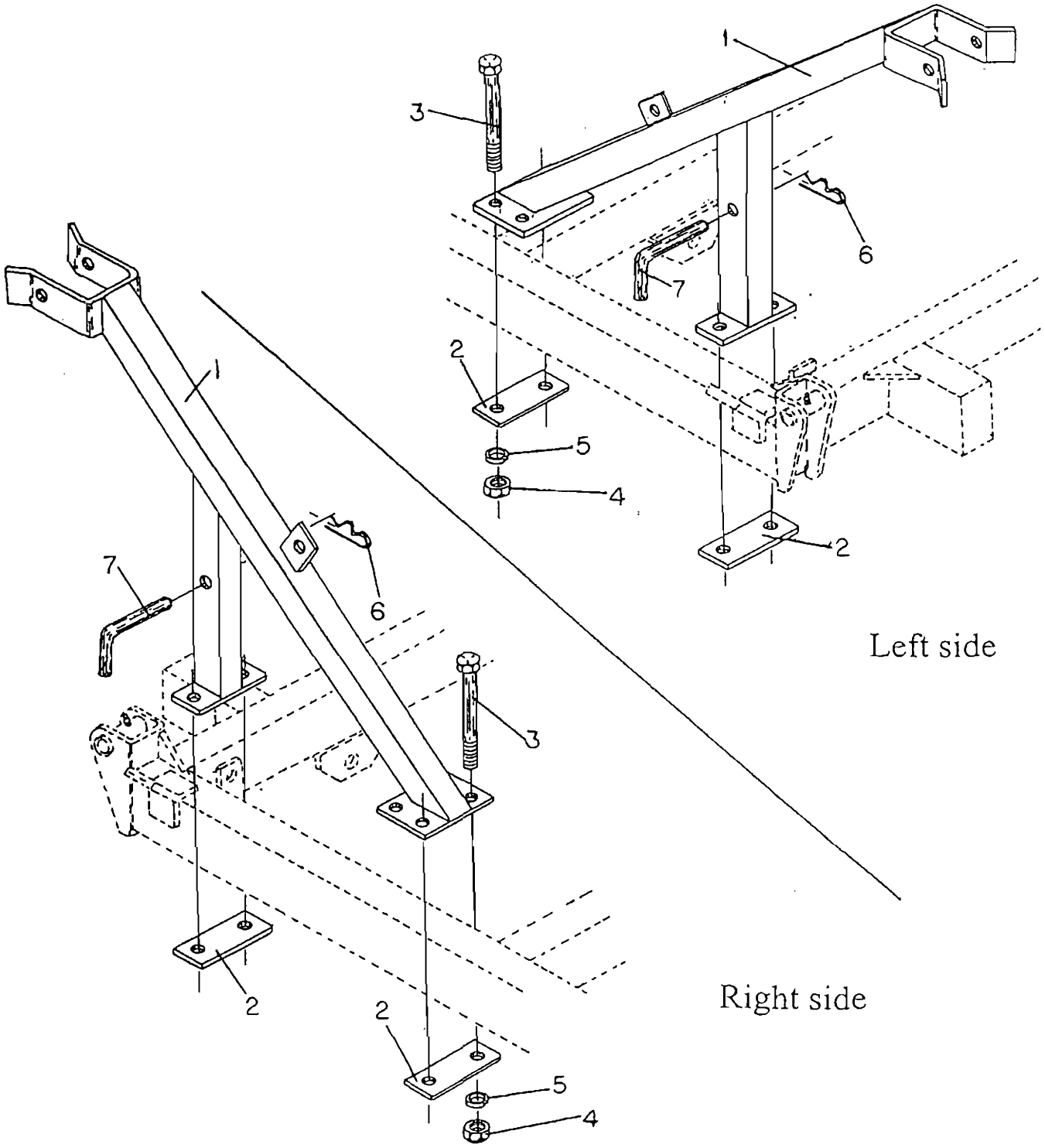
Wing lift components, Right wing



Wing lift components, Right wing

Key	Part No.	Description
1	0400-020	Wing lift, 29 ft. & 37 ft.
	0410-124	Wing lift, 25 ft.
2	0400-032	Toggle, wing lift
3	0410-106	Wing lift stop
4	0420-175	Wing fold stop, right
5	0420-300	Base plate
6	5818-030	Clevis pin bushing
7	5818-605	Hydraulic cylinder, 4 x 24
8	6133-007	Bushing, 0.75"OD x 0.51"ID x 0.438"
9	7113-127	Cap screw, 1/2"NC x 5"
10	7115-080	Cap screw, 3/4"NC x 8"
11	7723-015	Hex nut, 1/2"NC
12	7725-002	Hex nut, 3/4"NC
13	7726-012	Hex Nylock nut, 1"NC
14	7813-015	Flat washer, 1/2"
15	7843-015	Lock washer, 1/2"
16	7845-020	Lock washer, 3/4"
17	8116-003	Bolt, 1"NC x 6-1/4", W/7726-012 Nylock nut
18	8116-601	Bolt, 1"NC x 5-3/4", W/7726-012 Nylock nut

Center frame transport latch



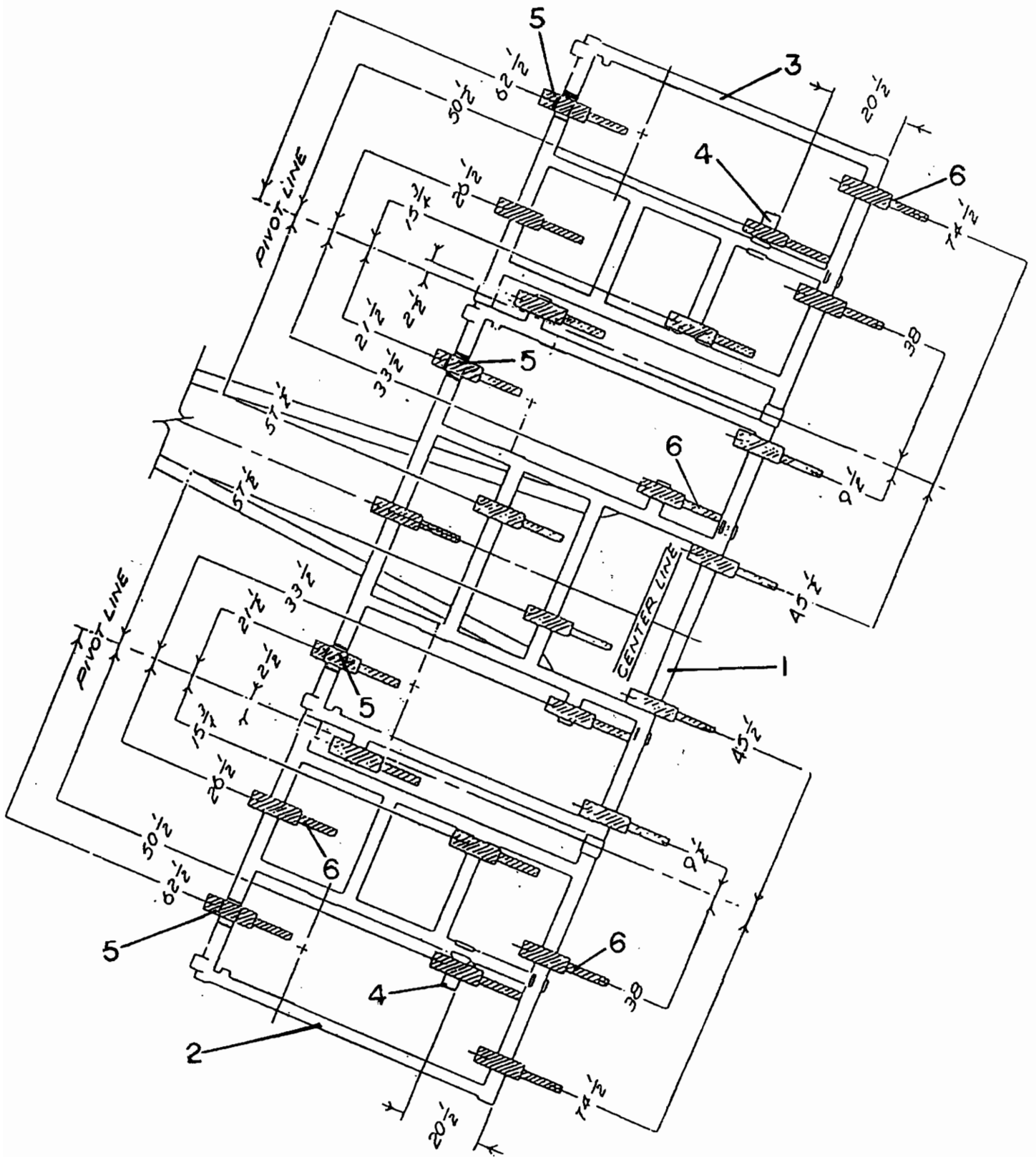
Left side

Right side

Center frame transport latch

Key	Part No.	Description
1	0420-100	Transport latch
2	0420-293	Mounting plate
3	7114-080	Cap screw, 5/8"NC x 8"
4	7724-005	Hex nut, 5/8"NC
5	7844-020	Lock washer, 5/8"
6	7920-002	Hitch pin, #8
7	8036-801	Pin, wing lock, 1" x 6-1/2"

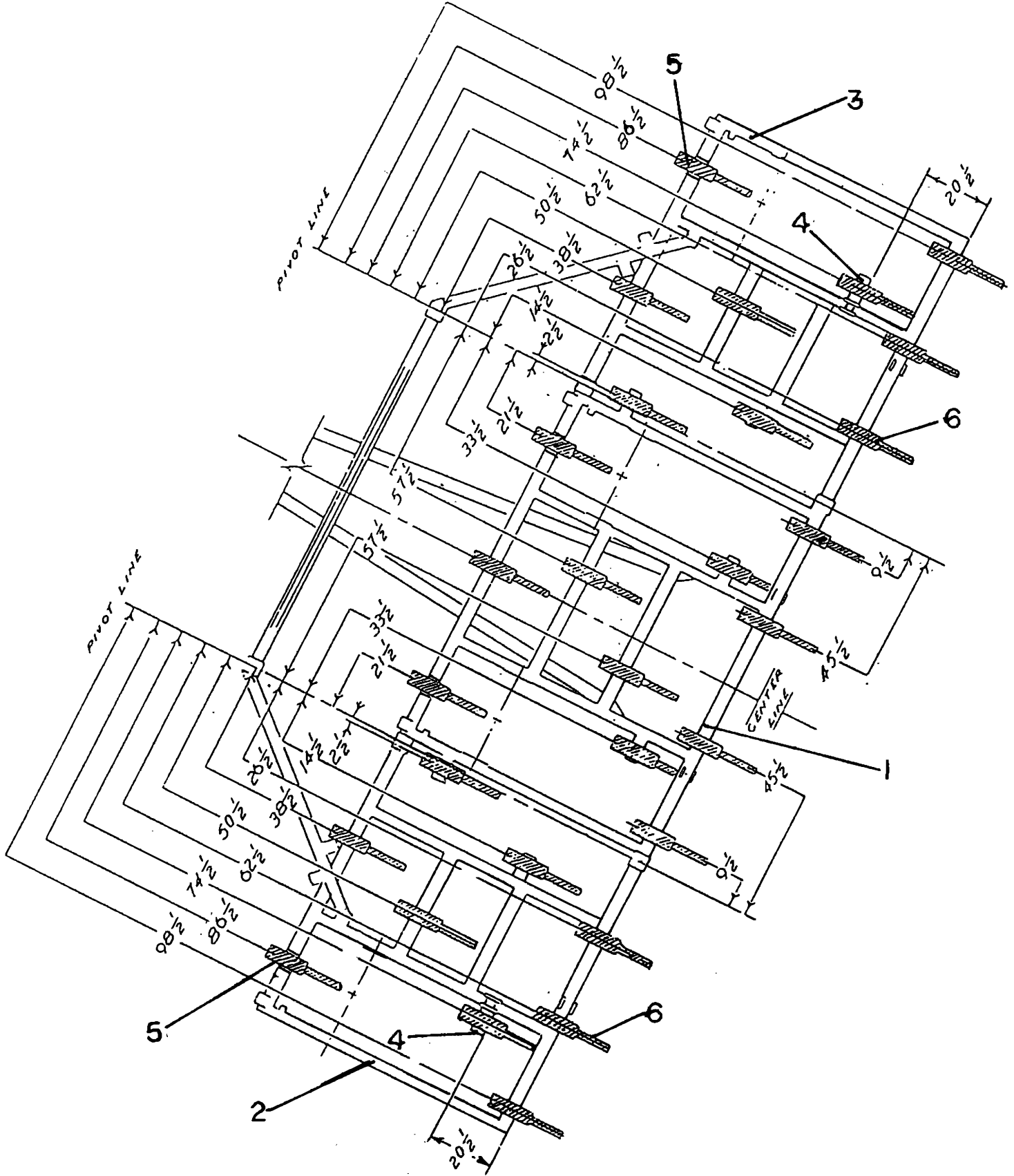
Shank layout



Shank layout

Key	Part No.	Description
1	0420-030	Center frame, 11 ft.
2	0420-041	Wing frame, 7ft. left
3	0420-042	Wing frame, 7ft. right
4	0420-083	Shank mount, 9"
5	0420-118	Forward shank mount
6	0420-353	32" Stiff chisel shank assembly
	0420-355	32" Spring chisel shank assembly

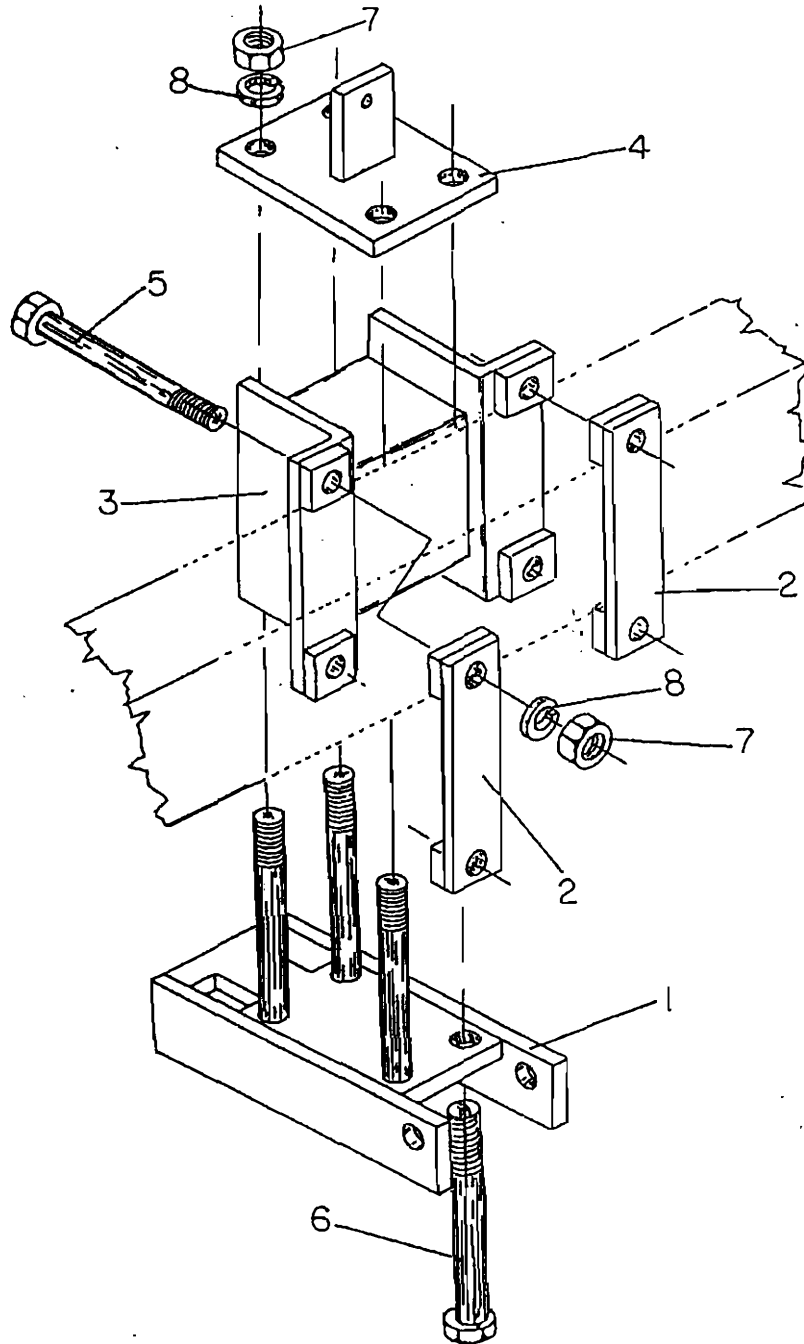
Shank layout



Shank layout

Key	Part No.	Description
1	0420-030	Center frame, 11 ft.
2	0420-035	Wing frame, 9 ft. left
3	0420-036	Wing frame, 9 ft. right
4	0420-083	Shank mount, 9"
5	0420-118	Forward shank mount
6	0420-353	32" Stiff chisel shank assembly
	0420-355	32" Spring chisel shank assembly

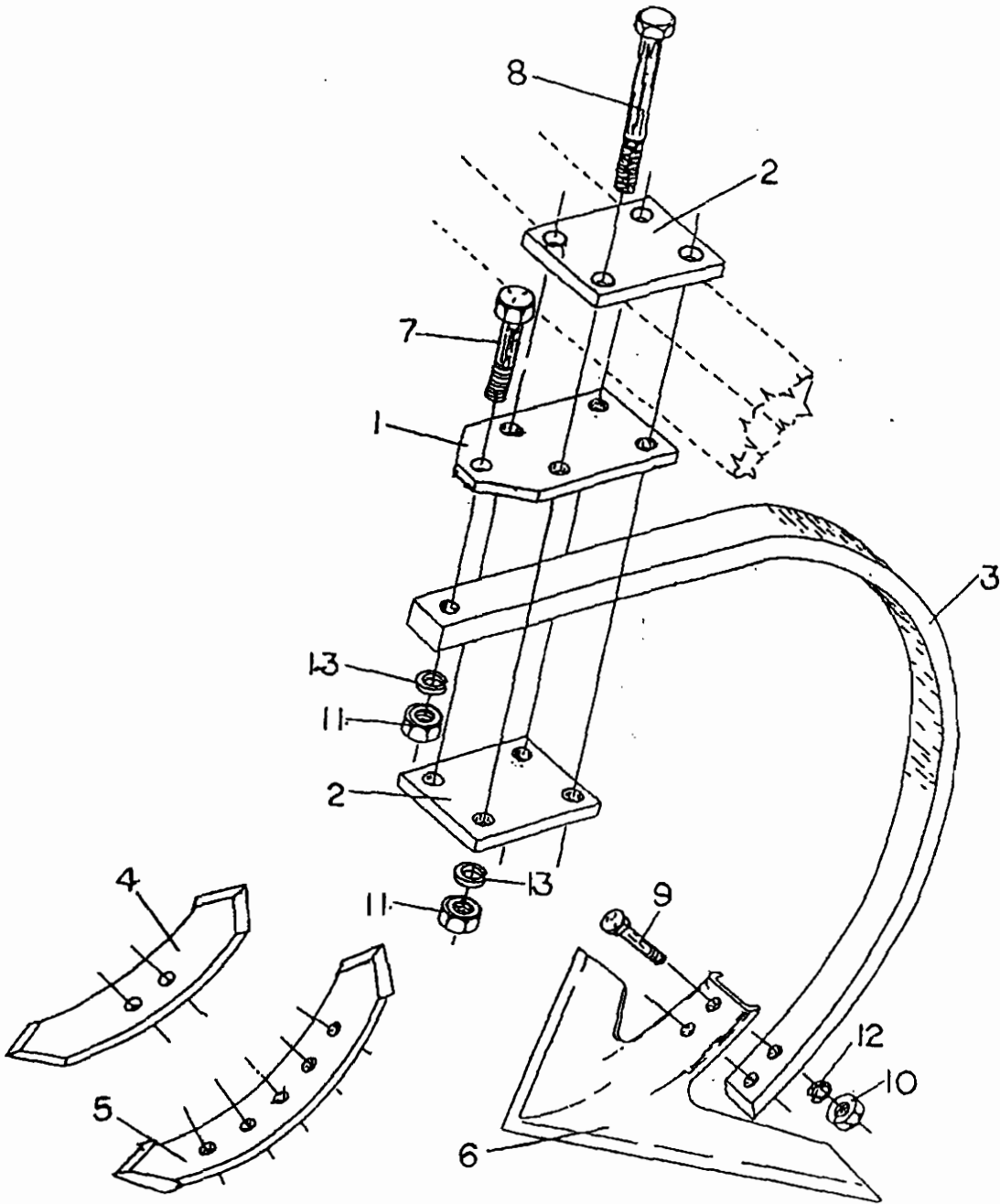
Forward shank mount



Forward shank mount

Key	Part No.	Description
1	0420-081	Shank mount bracket
2	0420-114	Backing plate
3	0420-118	Forward shank mount
4	0425-030	Cylinder lock holder
5	7115-071	Cap screw, 3/4"NC x 6 1/2"
6	7115-080	Cap screw, 3/4"NC x 8"
7	7725-002	Hex nut, 3/4"NC
8	7845-020	Lock washer, 3/4"

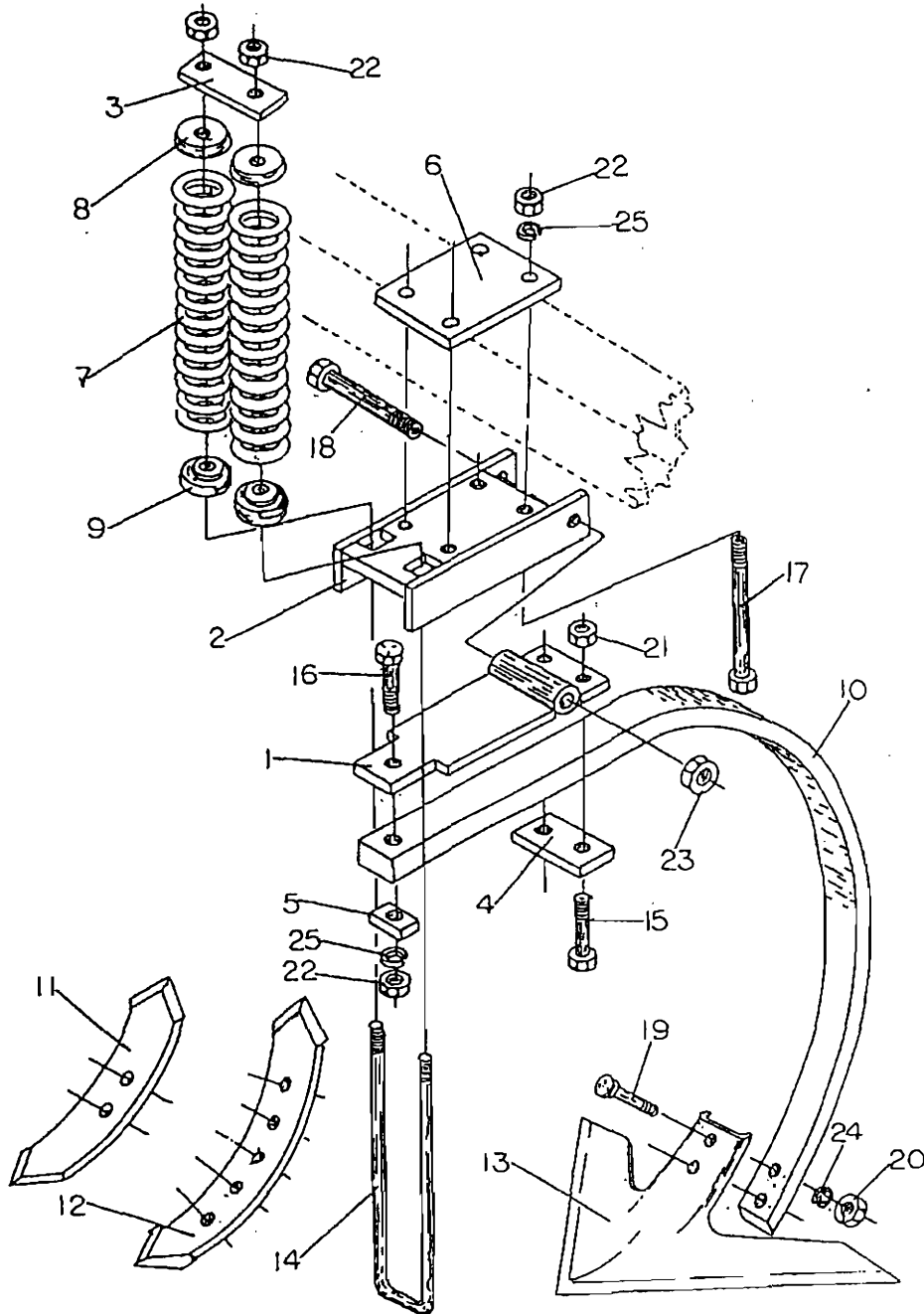
Stiff shank assembly



Stiff shank assembly

Key	Part No.	Description
	0420-353	32" Stiff shank assembly, W/O Points
	Note: Not all parts illustrated are included in assembly	
1	0420-087	Shank mount
2	0420-289	Mount plate
3	5939-002	32" Shank
4	5952-609	Point, reversible, bolt on
5	5952-612	Point, twisted right hand
	5952-613	Point, twisted left hand
6	5952-635	Sweep, 16"
	5952-641	Sweep, 18"
7	7115-030	Cap screw, 3/4"NC x 3"
8	7115-099	Cap screw, 3/4"NC x 10"
9	7273-001	Plow bolt No. 2, 1/2"NC x 2-1/2"
10	7723-015	Hex nut, 1/2"NC
11	7725-002	Hex nut, 3/4"NC
12	7843-015	Lock washer, 1/2"
13	7845-020	Lock washer, 3/4"

Spring shank assembly



Spring shank assembly

Key	Part No.	Description
	0420-355	32" Spring shank assembly, W/O Points

Note: Not all parts illustrated are included in assembly.

1	0420-080	Shank mount hinge
2	0420-081	Shank mount bracket
3	0420-297	Support plate
4	0420-298	Mount plate
5	0420-299	Spacer
6	0420-300	Mount backing plate
7	5113-001	Spring
8	5919-050	Top insert
9	5919-051	Bottom insert
10	5939-002	32" Shank
11	5952-609	Point, reversible, bolt on
12	5952-612	Point, twisted right hand
	5952-613	Point, twisted left hand
13	5952-635	Sweep, 16"
	5952-641	Sweep, 18"
14	6215-001	U-Bolt, 3/4"NC W/2-7/16" Span
15	7114-028	Cap screw, 5/8"NC x 3-1/4"
16	7115-030	Cap screw, 3/4"NC x 3"
17	7115-080	Cap screw, 3/4"NC X 8"
18	7115-112	Cap screw, 7/8"NC x 7"
19	7273-001	Plow bolt, No. 2, 1/2"NC x 2-1/2"
20	7723-015	Hex nut, 1/2"NC
21	7724-120	Lock nut, 5/8"NC
22	7725-002	Hex nut, 3/4"NC
23	7725-130	Lock nut, 7/8"NC
24	7843-015	Lock washer, 1/2"
25	7845-020	Lock washer, 3/4"

Part Number Page Reference

Part Number Page Reference

Part No.	Description	Page
0101-037	Hydraulic hose mast assembly	6, 28
0106-211	Hydraulic hose mast	6
0206-031	Clamp plate, 4" span-3/4" bolts	6
0400-020	Wing lift, 29ft. & 37ft.	30, 32
0400-032	Toggle, wing lift	30, 32
0403-296	Tongue brace plate	6
0410-033	Center support mount, left	26
0410-034	Center support mount, right	26
0410-106	Wing lift stop	30, 32
0410-121	Adjustable link	20
0410-124	Wing lift, 25ft.	30, 32
0410-581	Adjustable link assembly	18, 20
0420-009	Tongue, left side	6
0420-010	Tongue, right side	6
0420-015	Cross tongue	4, 6, 8, 10
0420-021	Wing pull, left, 29ft.	4, 8
0420-022	Wing pull, right, 29ft.	4, 10
0420-023	Wing pull, left, 25ft.	4, 8
0420-024	Wing pull, right, 25ft.	4, 10
0420-030	Center frame, 11 ft.	4, 6, 8, 10, 26, 36, 38
0420-035	Wing frame, left, 9ft.	4, 8, 38
0420-036	Wing frame, right, 9ft.	4, 10, 38
0420-041	Wing frame, left, 7ft.	4, 8, 36
0420-042	Wing frame, right, 7ft.	4, 10, 36
0420-045	Tandem wheel leg, left	12, 14
0420-046	Tandem wheel leg, right	12, 14
0420-047	Wheel leg, single wide, left	16
0420-048	Wheel leg, single wide, right	16
0420-053	Walking beam, W/5419-125 Cup, left	14
0420-054	Walking beam, W/5419-125 Cup, right	14

Part Number Page Reference

Part No.	Description	Page
0420-080	Shank mount hinge	44
0420-081	Shank mount bracket	40, 44
0420-082	Base plate	8, 10
0420-083	Shank mount, 9"	8, 10, 36, 38
0420-087	Shank mount	42
0420-100	Transport latch	34
0420-101	Cylinder lock, 14"	18, 20
0420-102	Rear stand	6
0420-103	Rear stand adjustment bracket	6
0420-408	Cylinder lock, 14-1/2"	18, 20
0420-114	Backing plate	40
0420-118	Forward shank mount	36, 38, 40
0420-175	Wing fold stop, right	32
0420-176	Wing fold stop, left	30
0420-177	Cross tongue brace	6
0420-289	Mount plate	42
0420-293	Mount plate	26, 34
0420-295	Pivot arm, use W/32" Shank	18, 20
0420-296	Center support bar	26, 28
0420-297	Support plate	44
0420-298	Mount plate	44
0420-299	Spacer	44
0420-300	Mount backing plate	30, 32, 44
0420-330	Tandem wheel leg assembly, 6 Bolt, left	12, 18
0420-332	Single wheel leg assembly, wide left (LH)	16
0420-333	Single wheel leg assembly, wide right (RH)	16
0420-335	Tandem wheel leg assembly, 6 bolt, right	12, 18
0420-355	Spring shank assembly, 32"	36, 38, 44
0420-460	Walking beam assembly, right	12, 14
0420-480	Walking beam assembly, left	12, 14
0420-936	Mounting plate	6
0425-030	Cylinder lock holder	40

Part Number Page Reference

Part No.	Description	Page
5113-001	Spring	44
5229-007	Tyrap, 1/2" x 28, Panduit	22, 24, 28
5419-113	Bearing, outer	14, 16
5419-118	Cup, outer	14, 16
5419-125	Cup, bearing race	14
5419-126	Bearing	14
5419-127	Bearing	14
5419-141	Cup, inner	14, 16
5419-142	Bearing cone, inner	14, 16
5439-141	Seal, 6 bolt hub	14, 16
5469-006	Hub cap	14, 16
5619-021	Hub assembly, Q-888, 6 bolt	14, 16
5619-022	Hub, 6 bolt	14, 16
5629-001	Spindle, 3650, 2-1/8" Butt	14, 16
5639-421	Wheel rim, 15 x 8, 6 bolt	12
5649-035	Tire, 12.5 x 15, 8 ply	12
5649-062	Tire, 9.5L x 15, 8 ply	12
5649-503	Tire, 11L x 15, 8 ply	12
5818-030	Clevis pin bushing	26, 30, 32
5818-605	Hydraulic cylinder, 4 x 24, AF Series	26, 28
5819-062	Hydraulic cylinder, 3-1/4 x 12, Rephase	20, 22, 24
5819-063	Hydraulic cylinder, 3-1/2 x 12, Rephase	20, 22, 24
5819-064	Hydraulic cylinder, 3-3/4 x 12, Rephase	20, 22, 24
5819-065	Hydraulic cylinder, 4 x 12, Rephase	20, 22, 24
5833-101	Tee, 1/2 x 1/2	28
5843-235	1/2 Hydraulic male quick coupler	28
5843-400	1/2 Straight swivel union	28
5843-469	1/2 90 degree restrictor union-O-Ring	28
5846-095	1/2 90 degree swivel union, O-Ring	20, 28
5859-045	Cushion valve, SRC 11 BD	28

Part Number Page Reference

Part No.	Description	Page
5919-050	Top insert	44
5919-051	Bottom insert	44
5919-900	Tongue flapper, cast	6
5939-002	32" Shank	42, 44
5952-609	Point, reversible, bolt on	42, 44
5952-612	Point, twisted, right hand	42, 44
5952-613	Point, twisted, left hand	42, 44
5952-635	Sweep, 16"	42, 44
5952-641	Sweep, 18"	42, 44
6133-007	Bushing, 0.75"OD x 0.51"ID x 0.438"	30, 32
6136-675	Bushing, 1.75"OD x 1.531"ID x 1.438"	18
6146-014	Cylinder bushing, 5/8" long	18, 20, 22, 24
6215-001	U-Bolt, 3/4"NC x W/2-7/16" span	44
6329-055	Tongue jack	6
6469-020	Hub cap	14
6628-018	Spindle, walking beam	14
6822-225	Hose, 3/8 x 25-1/2, M-M	28
6822-234	Hose, 3/8 x 34-1/2, M-M	28
6822-272	Hose, 3/8 x 72-1/2, M-M	28
6822-278	Hose, 3/8 x 84-1/2, M-M	28
6822-283	Hose, 3/8 x 102-1/2, M-M	24
6822-306	Hose, 3/8 x 126 (10'-6") 1/2, M-M	22
6822-403	Hose, 3/8 x 210 (17'-6") 1/2	28
6822-440	Hose, 3/8 x 240 (20'-0") 1/2	24
6822-443	Hose, 3/8 x 252 (21'-0") 1/2 , M-M	22, 24
6822-445	Hose, 3/8 x 258 (21'-6") 1/2	22
6822-535	Hose, 3/8 x 420 (35'-0") 1/2	22
6822-629	Hose, 3/8 x 390 (32'-6") 1/2	24
6896-100	Depth stop, white 1" Med.	18
6896-125	Depth stop, green 1-1/4" Med.	18
6896-150	Depth stop, blue 1-1/2" Med.	18

Part Number Page Reference

Part No.	Description	Page
6896-175	Depth stop, red 1-3/4" Med.	18
6896-200	Depth stop, yellow 2" Med.	18
6899-402	Medium size A, Depth stop kit	18, 20, 22, 24
7113-127	Cap screw, 1/2"NC x 5"	30, 32
7114-028	Cap screw, 5/8"NC x 3-1/4"	44
7114-040	Cap screw, 5/8"NC x 4"	14
7114-050	Cap screw, 5/8"NC x 5"	8, 10, 14, 16
7114-055	Cap screw, x 5/8"NC x 5-1/2"	6
7114-080	Cap screw, 5/8"NC x 8"	26, 34
7114-109	Cap screw, 5/8"NC x 2"	6
7115-025	Cap screw, 3/4"NC x 2-1/2"	20
7115-030	Cap screw, 3/4"NC x 3"	44
7115-050	Cap screw, 3/4"NC x 5"	20
7115-071	Cap screw, 3/4"NC x 6-1/2"	40
7115-080	Cap screw, 3/4"NC x 8"	6, 30, 32, 40, 44
7115-099	Cap screw, 3/4"NC x 10"	42
7115-112	Cap screw, 7/8"NC x 7"	44
7116-030	Cap screw, 1"NC x 3"	6, 8, 10
7273-001	Plow bolt, #2, 1/2"NC x 2-1/2"	42, 44
7333-006	Lug bolt, 1/2"NF x 1"	14, 16
7707-001	Lock nut, N-08	14
7715-871	Hex nut, 7/8"NC	20
7715-875	Slotted nut, 7/8"NF	14, 16
7717-120	Hex Nylock nut, 3/4"NC	6
7717-255	Hex Nylock nut, 1-1/4"NC	8, 10
7717-555	Hex Nylock nut, 1-1/2"NC	16, 18
7723-015	Hex nut, 1/2"NC	30, 32, 42, 44
7724-005	Hex nut, 5/8"NC	6, 8, 10, 16, 26, 34
7724-120	Lock nut, 5/8"NC	44

Part Number Page Reference

Part No.	Description	Page
7725-002	Hex nut, 3/4"NC	6, 20, 30, 32, 40, 42, 44
7725-130	Lock nut, 3/4"NC	44
7725-138	Hex jam nut, 7/8"NC	20
7726-005	Hex nut, 1"NC	6, 8, 10
7726-012	Hex Nylock nut, 1"NC	26, 30, 32
7807-001	Ear washer, W-08	14
7813-015	Flat washer, 1/2"	30, 32
7815-014	Flat washer, 7/8" A-325 Hardened	14, 16
7816-020	Cut washer, 1"	18, 20
7843-015	Lock washer, 1/2"	30, 32, 42, 44
7844-020	Lock washer, 5/8"	6, 8, 10, 14, 16, 26, 34
7845-020	Lock washer, 3/4"	6, 20, 30, 32, 40, 42, 44
7846-020	Lock washer, 1"	6, 8, 10
7896-500	Machine bushing, 1-1/2" x 10 Ga. NR	6, 16, 18
7910-162	Cotter pin, 5/32" x 1-1/2"	14, 16
7920-002	Hitch pin, #8, cylinder lock	18, 20, 34
7920-010	Drive line lock pin	6
7920-012	Hitch pin, 1/2" x 4", W/safety pin	6
8036-025	Pin, tongue flapper, 1-1/2" x 5-1/2"	6
8036-801	Pin, wing lock, 1" x 6-1/2"	34
8115-017	Bolt, 3/4"NC x 16-1/2", W/7717-120 Nylock nut	6
8116-003	Bolt, 1"NC x 6-1/4", W/7726-012 Nylock nut	30, 32
8116-006	Bolt, 1-1/4"NC x 10-1/2", W/7717-255 Nylock nut	6
8116-018	Bolt, 1"NC x 5-5/16", W/7726-012 Nylock nut	26
8116-032	Bolt, 1-1/4"NC x 7", W/7717-255 Nylock nut	8, 10
8116-601	Bolt, 1"NC x 5-3/4", W/7726-012 Nylock nut	30, 32
8116-803	Bolt, 1-1/2"NC x 4-1/8", W/7715-555 Nylock nut	16, 18