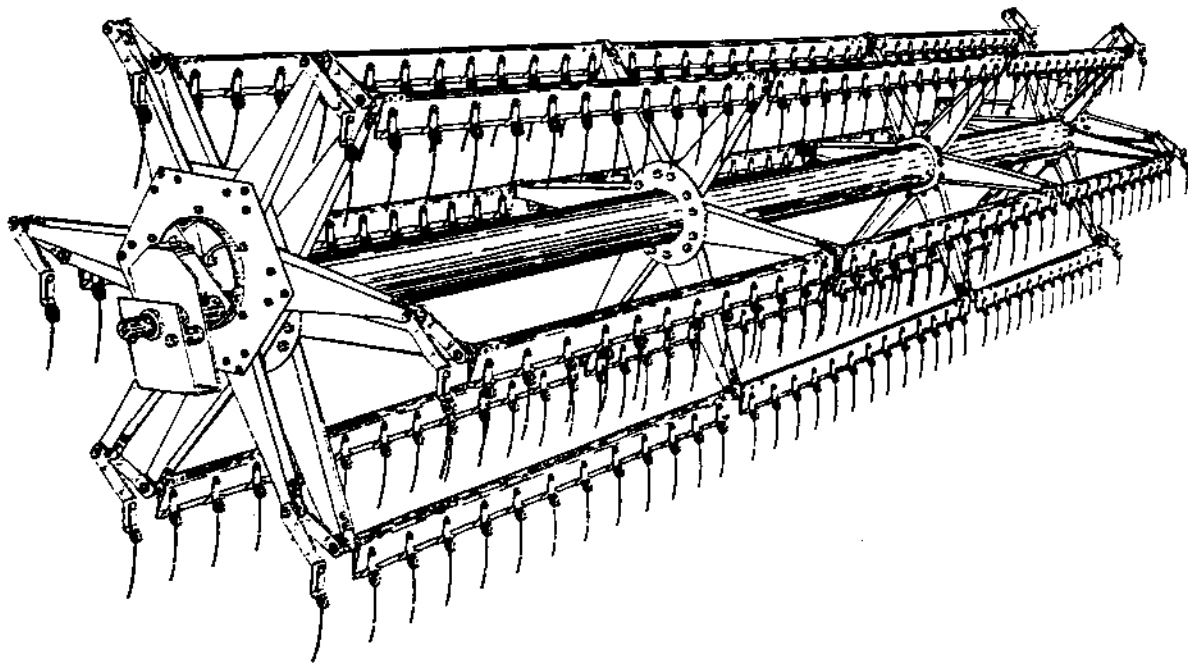


J.E. LOVE COMPANY

LOVE®

**J-21 pick-up
reel**



**OPERATING INSTRUCTIONS
SETTING UP DIRECTIONS
& PARTS ILLUSTRATIONS**



J-21 pick-up reel

GENERAL INFORMATION

SECTION A

FORWARD AND WARRANTY	A1-1
SAFETY INTRODUCTION	A1-2
OPERATING INSTRUCTIONS	A1-3, A1-4
SHIPMENT INSPECTION INFORMATION	A1-5
SETTING UP DIRECTIONS	A1-6, A1-7
ORDERING PROCEDURES & PACKAGING SYSTEM	A1-9, A1-10
PICKUP REEL SPECIFICATIONS	A1-11, A1-12

COMMON PARTS

REEL PACKAGE

SECTION B

CENTER TUBE, BAT AND BATSHAFT REFERENCE CHART	B1-1
LOVE PICKUP REEL DIAGRAM	B1-2
LOVEREEL PARTS	B1-3, B1-5
OUTBOARD FINGERS, TINES AND CRANKARMS	B1-6, B1-7
ECCENTRIC SPIDER ASSEMBLY	B1-8, B1-9

SPECIFIC MODELS

SECTION C

DRIVE AND ATTACHING KITS

NOTICE: This section will be provided with LOVE Pickup Reels and upon request. Upon receipt, pages are to be inserted in Section C.

APPROXIMATE SHIPPING WEIGHTS

J-21 pick-up reel

Header Length	5-Bat Weight	6-Bat Weight
17 ft.	480#	582#
18 ft.	500#	608#
19 ft.	520#	634#
20 ft.	540#	660#
22 ft.	625#	755#
24 ft.	670#	810#
25 ft.	695#	840#
27 ft.	755#	910#
30 ft.	840#	1010#

MEMBER

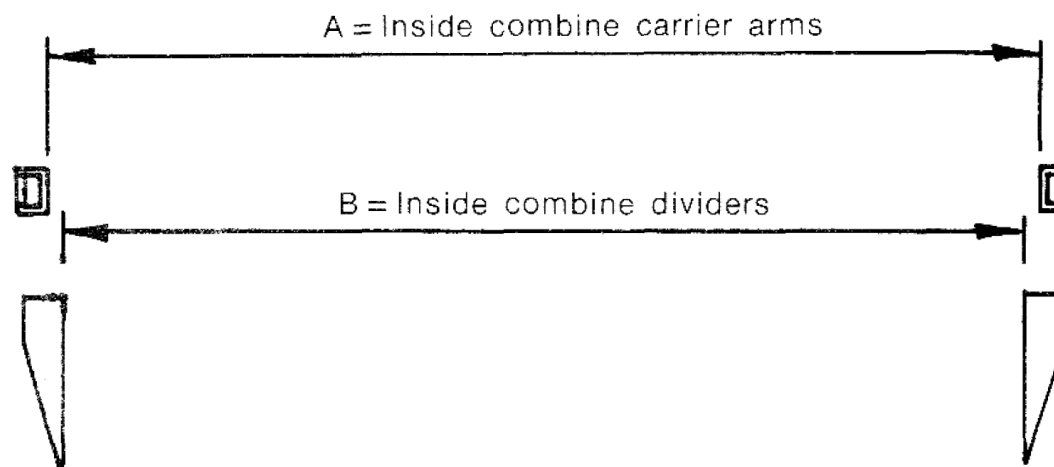


J.E. LOVE COMPANY

LOVE.

309 CALIFORNIA STREET
GARFIELD, WASHINGTON 99130-0188
(509) 635-1321 FAX: (509) 635-1434

How to measure combine to determine reel number:

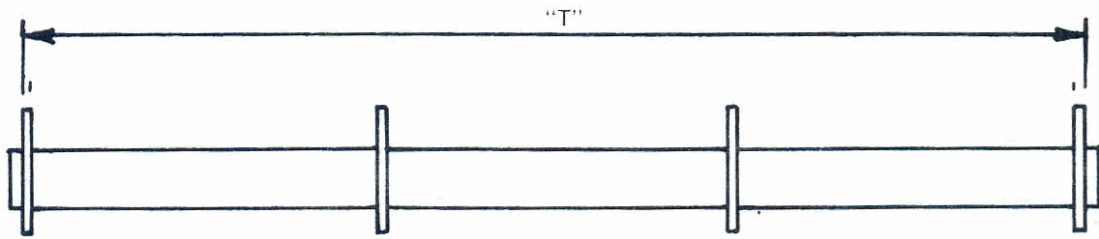


Reel Number (X) = A or B (whichever is smaller) Minus 5 5/8".
See Page 3 for Reel No. which is nearest "X". Use smaller Reel No. if larger Reel No. Minus "X" exceeds 1/2". If not use larger Reel No. Note: Page 3 is not available on Web Version of document

EXAMPLE: B = 188 3/4
X = 188 3/4 - 5 5/8 = 183 1/8
Reel Nos. nearest 182 & 185
185 - 183 1/8 = 1 7/8 use smaller

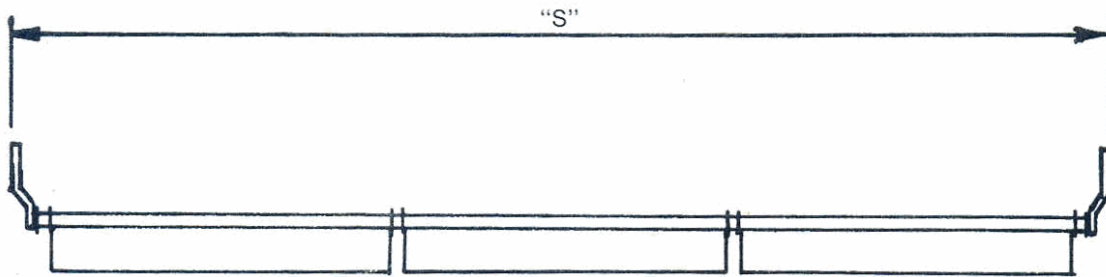
*End of combine is always determined by looking from operators platform in direction of travel.

*
 "T" = Measurement from outside flange to outside flange of center tube. Then see Page 3 under Center Tube Length column for "T" and read across to Reel No. (X).



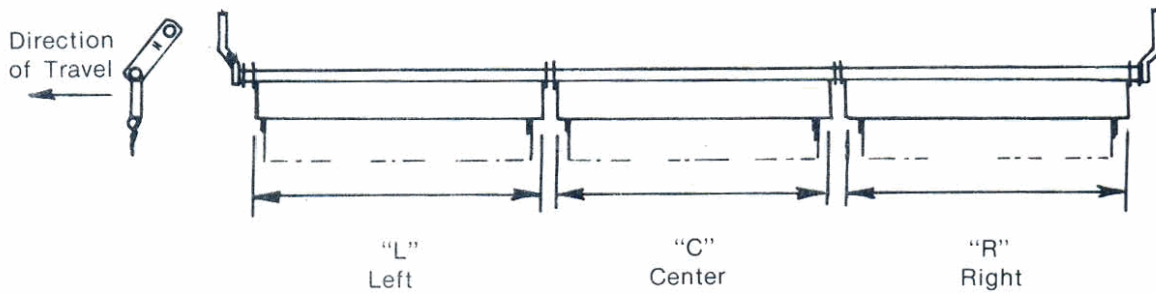
Batshaft:

*
 "S" = Measurement from outside of crank arm to outside of crank arm. Then see Page 3 under Batshaft Length Column "S" and read across to Reel No. (X).



Bat Length:

LOOKING IN DIRECTION OF TRAVEL FROM OPERATOR'S PLATFORM



*
 Measure all bats and compare with Bat Length Column on Page 3 when you read across to Reel No. (X).

All nylon tine bats are 3/8" short of chart lengths.

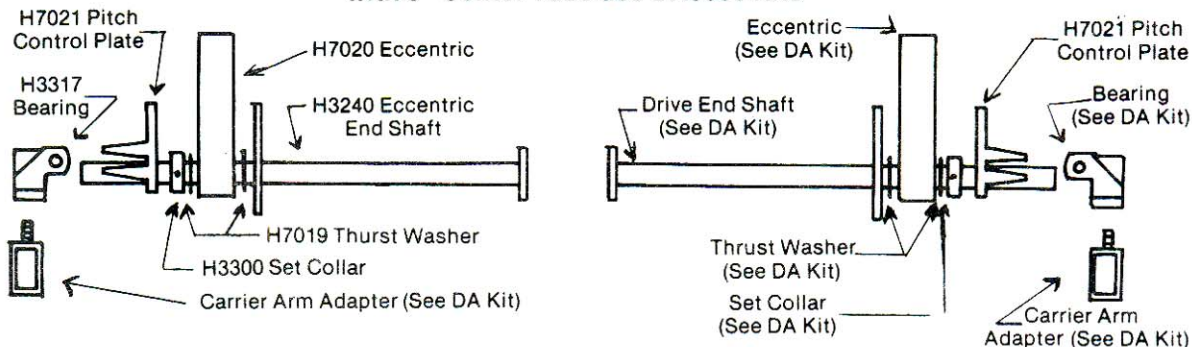
* Page 3 is not available on a web version of this document.

J. E. LOVE COMPANY

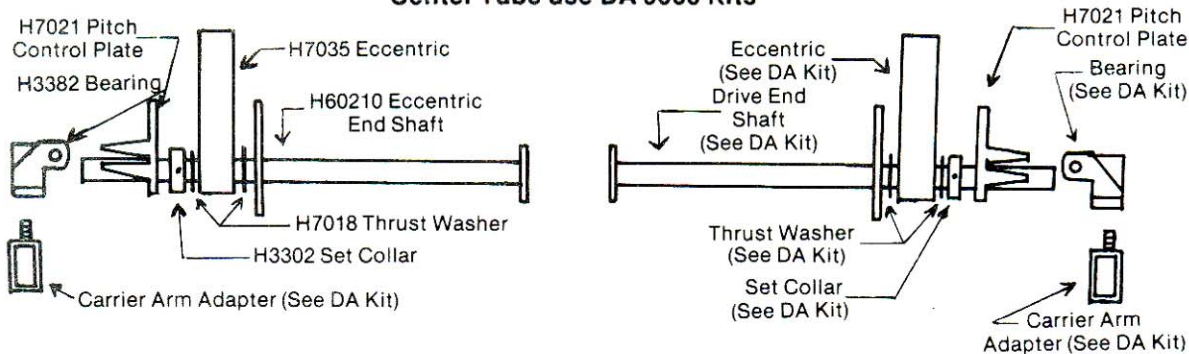
**Common
Drive and Attaching Kit Nos.**

Note 1: Attaching parts on the eccentric and drive ends of the Love Pickup Reels are included in Drive & Attaching Kits. Check the Pickup Reel and D.A. kit to insure that the proper parts are with the Pickup Reel and D.A. kit when shipped.

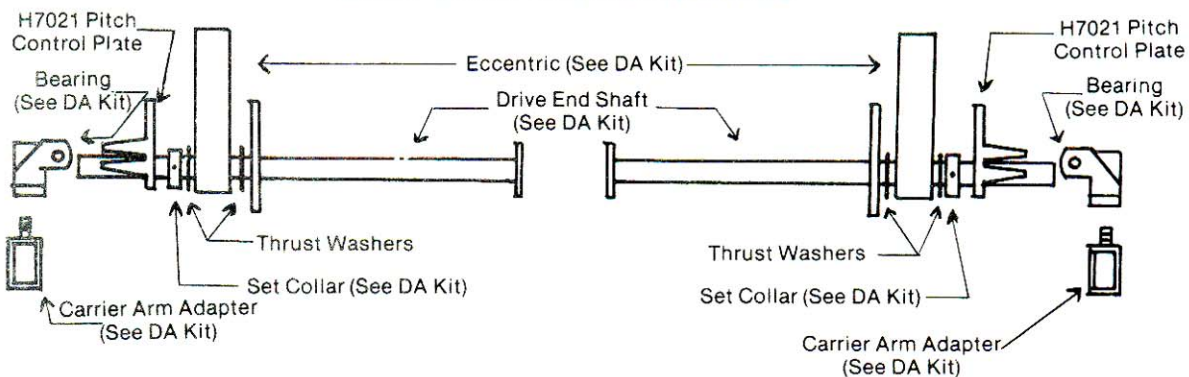
**8 ft. thru 21 ft. Combine and Swather Reels
with 6" Center Tube use DA8000 Kits**



**22 ft. thru 24 ft. Combine Reels with 8"
Center Tube use DA 9000 Kits**



**MM76 Double End Drive Reels (California Rice)
with 6" Center Tube use DA8500 Kits**





SAFETY INTRODUCTION

THE SAFETY-ALERT SYMBOL MEANS ATTENTION! BECOME ALERT! YOUR SAFETY IS INVOLVED! THIS SYMBOL IDENTIFIES IMPORTANT SAFETY MESSAGES IN THIS MANUAL. WHEN YOU SEE THIS SYMBOL, BE ALERT TO THE POSSIBILITY OF PERSONAL INJURY AND CAREFULLY READ THE MESSAGE THAT FOLLOWS.



DANGER

ROTATING SHAFTS CAN CAUSE DEATH OR SEVERE INJURY.
- KEEP CLEAR - DO NOT OPERATE WITHOUT SHIELDS IN PLACE.



CAUTION

BLOCK SECURELY

DO NOT PLACE YOURSELF UNDER ANY EQUIPMENT SUSPENDED HYDRAULICALLY, WITH MECHANICAL STOPS, JACKS OR HOISTS, WITHOUT BLOCKING SECURELY. MAKE SURE MACHINE CANNOT ROLL.



CAUTION

BEFORE POWER STARTING - CHECK TO INSURE THAT ALL BOLTS ARE PROPERLY TIGHTENED AND REEL IS FREE TO ROTATE. KEEP ALL PARTS OF BODY, CLOTHING AND ALL PERSONNEL CLEAR.



CAUTION

DO NOT SERVICE EQUIPMENT WHILE IT IS RUNNING. SHUT OFF POWER TO ADJUST, SERVICE OR CLEAN.

LOVEREEL PICK-UP REEL OPERATION & ADJUSTMENT

PLACEMENT OF REEL ON COMBINE OR SWATHER:

1. Reel center should be forward of cutterbar 5" to 9".
2. Do not set Reel too far ahead of cutterbar as it will strip the crop.
3. Set Reel center forward the same on both ends.
4. Be sure the header is completely down against the cutterbar when adjusting tine clearance.
5. Tines should pick up the crop, sweep the cutterbar and deposit the crop under the auger. Tine clearance of the auger will vary with conditions.
6. Reel center height should be the same on both ends.
7. Reel should be straight so lines will clear sickle as it revolves.

SPEED OF THE REEL:

1. Reel speed should be slightly faster than ground speed.
2. Proper Reel speeds may be obtained by purchasing a larger sheave or sprocket to slow the Reel down or a smaller sheave or sprocket to increase speed. Some machines are equipped with variable reel speed drives.



SHUT OFF POWER TO ADJUST, SERVICE OR CLEAN

LUBRICATION:

1. Use good grade pressure gun grease on all zerk fittings **DAILY**.

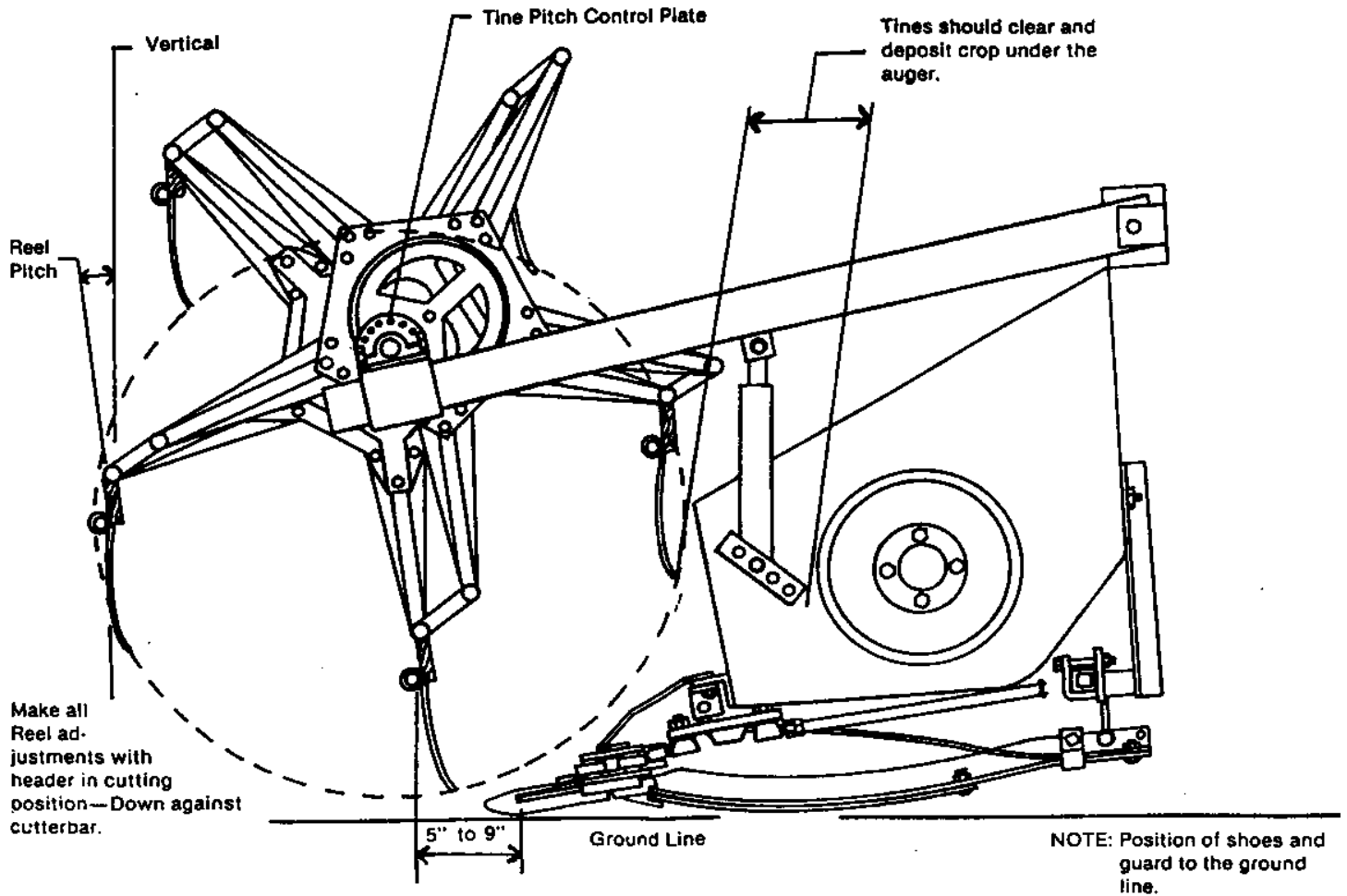
FIELD OPERATION & TROUBLE FINDING CHART

Most troubles are caused by improper installation or adjustment. The following suggested remedies are shown to familiarize you with the adjustments that may be made for the most common difficulties encountered in the field.

A sincere effort should be made to understand your Combine and Love Pick-up Reel. Carefully observe the effect of all adjustments. Soon you will have a thorough understanding of both pieces of equipment and no trouble in deciding what to adjust or what adjustment will solve the problem.

TROUBLE	SUGGESTED REMEDY
Reel not picking up the crop.	Reel Tine pitch is not steep enough to lift the crop. Increase the pitch of the tines.
Stripping and Shattering the crop.	Increase the speed of the Reel in relation to the ground speed.
Excessive breakage of Reel Tines and bats.	Reel is too high. Lower the Reel slightly.
Crop wrapping or carrying around the Reel.	Decrease the Reel speed in relation to the ground speed. Either change Reel drive sprockets or increase ground speed.
	Reel too far forward of cutterbar. Move in toward the machine.
	Reel Tines may be striking or digging into the ground. Raise the Reel.
	Reel too far forward of the cutterbar. Move toward the machine.
	Reel speed in ratio to ground speed is too great. Decrease Reel speed or increase ground speed.
	Reel Tine pitch is too steep. Decrease the Tine pitch by adjusting the Tine pitch control plate. The Reel should deposit the cut crop forward and below the auger.
	In standing crop the Reel is too far down thus bending stalks over tops of batshafts. Raise the Reel slightly.

Positioning Love Reel on Combine with Love Bar



POSITIONING LOVE REEL ON HEADER WITHOUT LOVE BAR

Same positioning rules apply, only use guard placement on rigid bar as guide point. Watch to insure tines clear the auger.

J.E. LOVE COMPANY
LOVE®

309 CALIFORNIA STREET
GARFIELD, WASHINGTON 99130-0188
(509)635-1321 FAX: (509)635-1434

**INSPECT REEL SHIPPING PACKAGE
FOR THE FOLLOWING:**

**J-21
pick-up
reel**

- **MANUAL** - OPERATING INSTRUCTIONS, SETTING UP DIRECTIONS & PARTS ILLUSTRATIONS.
-
1. **REEL PACKAGE** - REEL CENTER TUBE WITH REEL ARMS AND BRACES, BATSHAFT ASSEMBLIES, OUTBOARD FINGERS, AND ECCENTRIC SPIDER ASSEMBLIES. (REEL NUMBER SHOULD CORRESPOND TO REEL SPECIFICATION LIST FOR MAKE, MODEL, AND HEADER LENGTH. ALSO CHECK NUMBER OF BATS - 5 BAT OR 6 BAT.)
 2. **DRIVE & ATTACHING KIT** - DA--- KIT NUMBER AS LISTED ON REEL SPECIFICATION LIST FOR MAKE, MODEL AND HEADER LENGTH. (KIT MAYBE PARTIALLY INSTALLED ON REELS SHIPPED DIRECT FROM FACTORY.)
-
- **IF ANY SHORTAGE NOTED. PLEASE NOTIFY J.E. LOVE CO. IMMEDIATELY.**

SETTING UP DIRECTIONS

J.E. LOVE COMPANY
309 CALIFORNIA ST.
GARFIELD, WA 99130-0188

J-21 *pick-up* *reel*

IMPORTANT!!!

ASSEMBLE COMPLETELY BEFORE TIGHTENING BOLTS THAT SECURE SPIDER ASSEMBLIES TO CENTER TUBE FLANGES. ROTATE REEL, ALLOWING IT TO ALIGN - THEN TIGHTEN BOLTS LENGTHWISE ALONG CENTER TUBE - ROTATE AND REPEAT PROCEDURE. REEL SHOULD ROTATE FREELY WHEN FOLLOWING THIS PROCEDURE.

SET-UP PROCEDURE

(PLEASE NOTE: THE ALPHA-NUMERICAL LISTING OF THE FOLLOWING DIRECTIONS CORRESPONDS WITH THOSE SHOWN ON THE DIAGRAM.)

1. INSTALL END SHAFTS INTO CENTER TUBE.

(DRIVE END SHAFT TO MATCH WITH HEADER DRIVE COMPONENTS.)



- A. PLACE FLAT SIDE OF CENTERING PLATE TO CLEAR INSIDE SEAM OF CENTER TUBE.
- B. HOLD END SHAFT AT AN ANGLE TO CENTER TUBE AS IT IS SLID INTO PLACE, ROTATE TO ALIGN HOLES.

2. FAN OUT REEL ARMS.



- A. FAN OUT REEL ARMS AND ALIGN WITH PROPER HOLE IN REEL CENTER RING. INSERT CAP SCREWS AND SNUG LOOSELY.
- B. POSITION REEL ARM BRACE AND SNUG LOOSELY.

3. INSTALL ECCENTRIC SPIDERS & OUTBOARD FINGERS.

- A. SLIDE ECCENTRIC ON TO END STEMS.
- B. PLACE ECCENTRIC SPIDER OVER END SHAFT AND ON TO ECCENTRIC.
- C. INSTALL OUTBOARD FINGER THROUGH ECCENTRIC SPIDER ARMS AND SECURE TO CRANK ARM OF BATSHAFT ASSEMBLY. MACHINE BUSHINGS ARE LOCATED ON BOTH SIDES OF PLASTIC BEARING.

4. INSTALL END BEARINGS & ADAPTERS.

- A. REFER TO DA— KIT FOR SPECIFIC MAKE, MODEL AND HEADER LENGTH FOR COMPONENTS AND CORRECT ASSEMBLY.

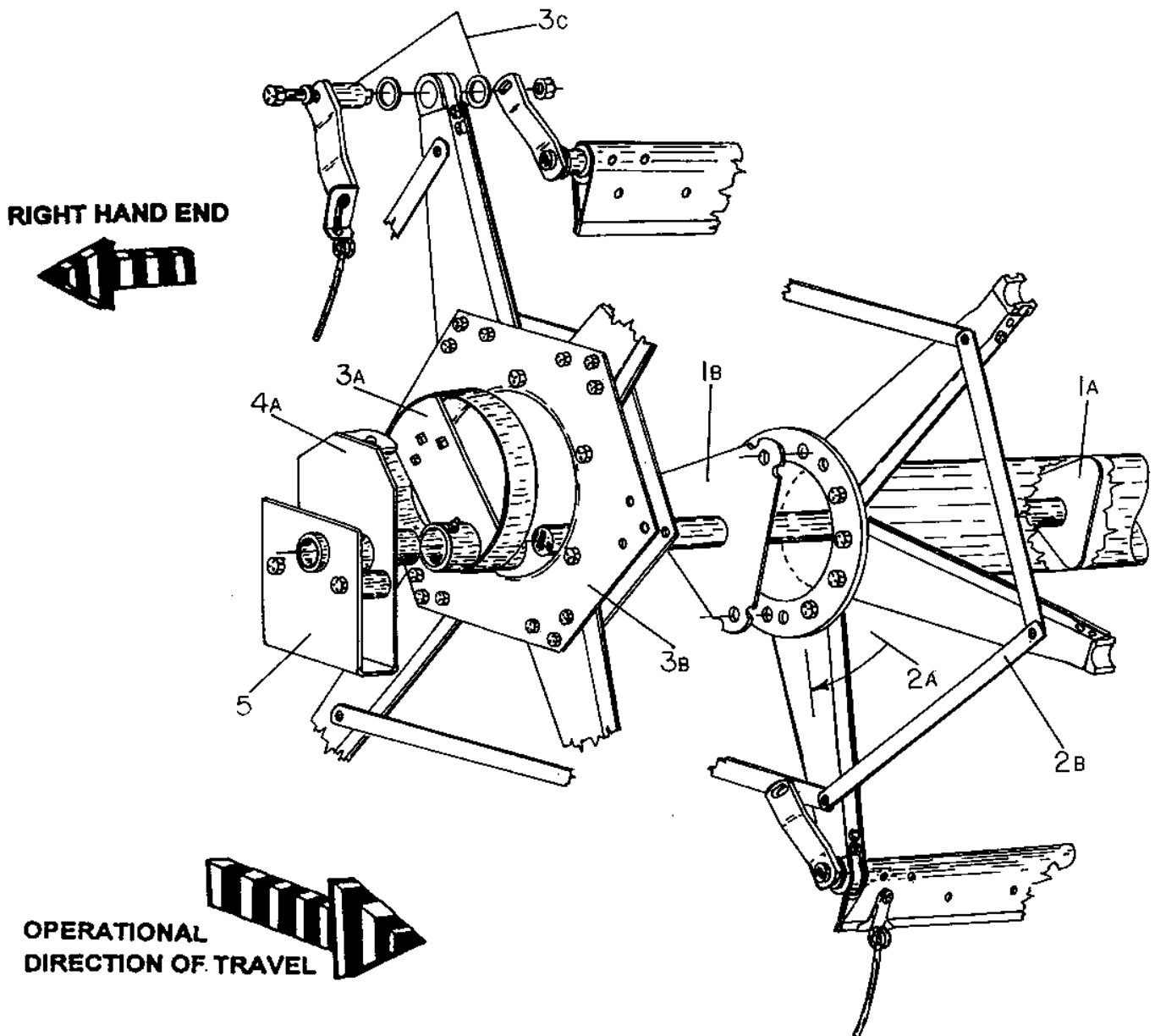
5. **INSTALL ON HEADER.**
 (INSERT STOP PIN OR BOLT SO REEL CANNOT SLIDE OFF ARMS.)
- A. CENTER REEL BETWEEN CARRIER ARMS OR DIVIDERS.
 - B. ROTATE REEL BY HAND AND TIGHTEN ALL BOLTS. TIGHTEN POSITION BOLTS ON TINE PITCH CONTROL, WHEN SET TO DESIRED POSITION.
 - C. INSTALL DRIVE PULLEY OR SPROCKET.
 - D. ROTATE REEL TO INSURE CLEARANCE, PLACE IN RUNNING POSITION AND SECURE.



INSTALL ALL SAFETY SHIELDS AND ALWAYS OPERATE SAFELY.



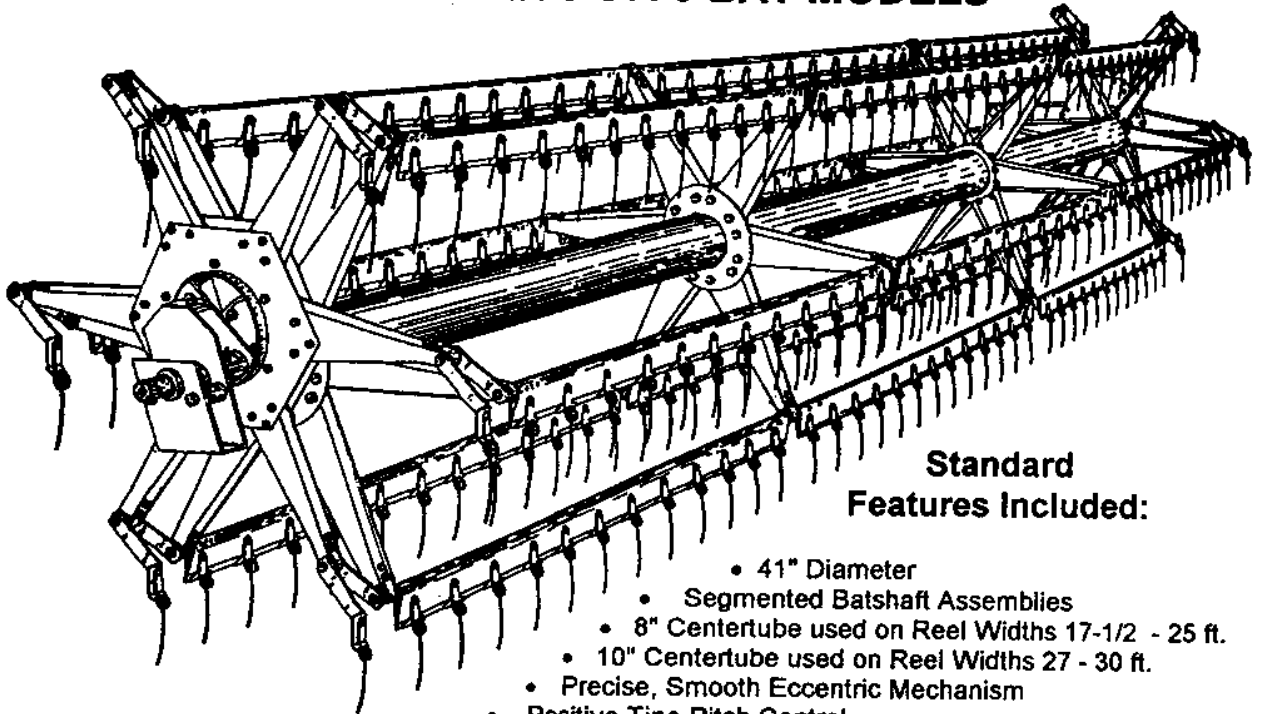
GREASE ZERKS DAILY



LOVEREEL ORDERING PROCEDURE & PACKAGING SYSTEM

J-21 pick-up reel

AVAILABLE IN 5 OR 6 BAT MODELS



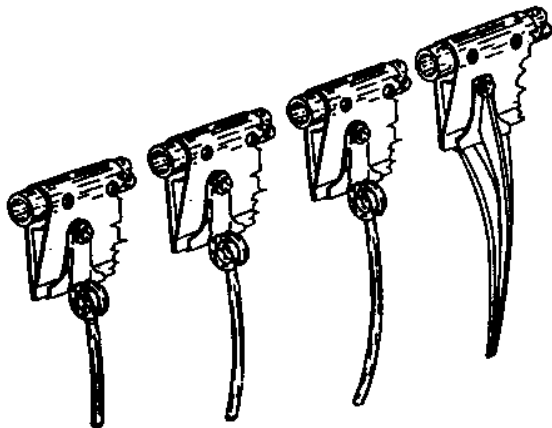
Standard Features Included:

- 41" Diameter
- Segmented Batshaft Assemblies
 - 8" Centertube used on Reel Widths 17-1/2 - 25 ft.
 - 10" Centertube used on Reel Widths 27 - 30 ft.
- Precise, Smooth Eccentric Mechanism
- Positive Tine Pitch Control
- Replaceable Crank and Center Journals

Tine Options

The LOVEREEL is available with tine options to accommodate different crops as well as crop conditions and operator preferences. Wire tines are available in the following lengths. 4" (W 4) 6" (W 6) & 8" (W 8). An 8" composite tine (N) is also available.

MEMBER



J.E. LOVE COMPANY

LOVE

309 CALIFORNIA STREET
GARFIELD, WASHINGTON 99130-0188
(509) 635-1321 FAX: (509) 635-1434

ORDERING PROCEDURE:

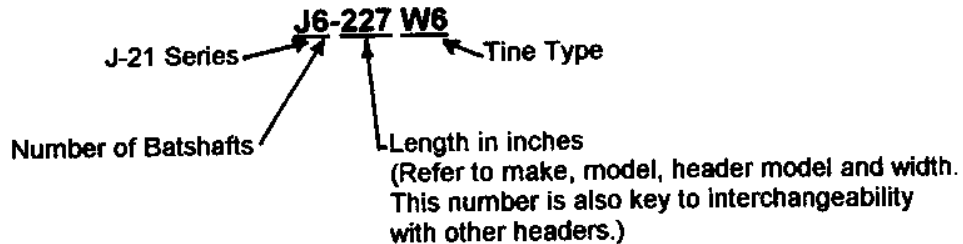
Specify combine or swather make, model, year, header model and width. Then indicate 5 or 6 batshafts and choice of tine.

PACKAGING SYSTEM

The LOVEREEL Two (2) Package System is comprised of the following:

1. Reel Package with Eccentric Spider Assembly
2. Drive & Attaching Kit

1. **REEL PACKAGE** - Combine or swather make, model, header model and width determine the reel length. The number of batshafts and the choice of tines complete the identification for the reel package.



The length of the reel determines the diameter of the reel center tube - 8" or 10" diameter. 8" and 10" diameter use the same eccentric spider. The length is also key to the number of bats per batshaft (Refer to bat length column on center tube reel parts pages.)

NOTE: The Reel Package with the Spider Eccentric Assembly comprise the common parts of the LOVEREEL.

2. **DRIVE & ATTACHING KIT** - is comprised of the parts to mount and drive the LOVEREEL on a specific combine or swather. When the LOVEREEL is shipped direct from the factory these parts may be attached to the reel. To identify the drive & attaching kit required please refer to the Pick-up Reel Specification pages. Drive & Attaching Kit Parts Information will be found in the D & A Kit supplement for common parts manual.

NOTE: "Right-hand" (RH) and "Left-hand" (LH) drive is determined by facing in the direction the combine or swather will travel when in use.

PICKUP REEL SPECIFICATIONS

J.E. LOVE CO.
 309 CALIFORNIA STREET
 GARFIELD, WASHINGTON 99136-0188
 (509)635-1321 FAX: (509)635-1434

J-21 pick-up reel

The following pages provide ordering information for 5 and 6 bat LOVEREELS for specific combines. The tine choice is to be specified when ordering. Please note tine options and fill in the () when ordering.

When ordering, please specify combine or swather make, model, year, header model, width and serial number

5 BAT REEL				6 BAT REEL		
HEADER WIDTH (FEET)	REEL PKG W/ECC. SPIDER	DRIVE & ATTACH KIT	Drive End LH or RH	REEL PKG W/ ECC. SPIDER	DRIVE & ATTACH KIT	Drive End LH or RH
AGCO - 400 AND 700 SERIES HEADERS						
18	J5-206()	DA9529	RH	J6-206()	DA9527	RH
20	J5-230()	DA9529	RH	J6-230()	DA9527	RH
22	J5-255()	DA9529	RH	J6-255()	DA9527	RH
25	J5-291()	DA9529	RH	J6-291()	DA9527	RH
27	J5-315()	DA9768	RH	J6-315()	DA9766	RH
30	J5-351()	DA9768	RH	J6-351()	DA9766	RH
AGCO - SERIES 3 HEADERS						
18	J5-206()	DA9530	RH	J6-206()	DA9512	RH
20	J5-230()	DA9530	RH	J6-230()	DA9512	RH
22	J5-255()	DA9530	RH	J6-255()	DA9512	RH
24	J5-279()	DA9530	RH	J6-279()	DA9512	RH
27	J5-315()	DA9769	RH	J6-315()	DA9754	RH
30	J5-351()	DA9769	RH	J6-351()	DA9754	RH
AGCO - SERIES 2 HEADERS						
18	J5-206()	DA9542	RH	J6-206()	DA9001	RH
20	J5-230()	DA9542	RH	J6-230()	DA9001	RH
22	J5-255()	DA9542	RH	J6-255()	DA9001	RH
24	J5-279()	DA9542	RH	J6-279()	DA9001	RH
CASE -IH 1010 & 1020 SERIES HEADERS (PIN JJC0200001 & AFTER)						
17½	J5-201()	DA9531	RH	J6-201()	DA9528	RH
20	J5-231()	DA9531	RH	J6-231()	DA9528	RH
22½	J5-261()	DA9531	RH	J6-261()	DA9528	RH
25	J5-291()	DA9531	RH	J6-291()	DA9528	RH
30	J5-351()	DA9770	RH	J6-351()	DA9767	RH
MANUAL FORE & AFT. FOR MANUAL SCREW ADJUSTING ADD PART # H456						
CASE -IH 1010 & 1020 SERIES HEADERS (PRIOR TO PIN JJC0200001)						
17½	J5-201()	DA9532	RH	J6-201()	DA9519	RH
20	J5-231()	DA9532	RH	J6-231()	DA9519	RH
22½	J5-261()	DA9532	RH	J6-261()	DA9519	RH
25	J5-291()	DA9532	RH	J6-291()	DA9519	RH
30	J5-351()	DA9771	RH	J6-351()	DA9761	RH

(NOTE: RH=RIGHT HAND, LH=LEFT HAND)

5 BAT REEL				6 BAT REEL		
HEADER WIDTH (FEET)	REEL PKG. W/ECC. SPIDER	DRIVE & ATTACH KIT	Drive End LH or RH	REEL PKG. W/ ECC. SPIDER	DRIVE & ATTACH KIT	Drive End LH or RH
CASE -IH 810 & 820 SERIES HEADERS (1979 & LATER)						
17½	J5-200()	DA9533	RH	J6-200()	DA9511	RH
20	J5-230()	DA9533	RH	J6-230()	DA9511	RH
22½	J5-258()	DA9533	RH	J6-258()	DA9511	RH
24	J5-276()	DA9533	RH	J6-276()	DA9511	RH
30	J5-348()	DA9772	RH	J6-348()	DA9755	RH
JOHN DEERE 900 SERIES HEADERS (EQUIPPED WITH JD PICKUP REEL DRIVE COMPONENTS)						
18	J5-203()	DA9541	RH	J6-203()	DA9524	RH
20	J5-227()	DA9541	RH	J6-227()	DA9524	RH
22	J5-252()	DA9541	RH	J6-252()	DA9524	RH
24	J5-276()	DA9541	RH	J6-276()	DA9524	RH
25	J5-294()	DA9534	RH	J6-294()	DA9525	RH
30	J5-348()	DA9773	RH	J6-348()	DA9765	RH
#A WHEN EQUIPPED WITH FLATBAT REEL DRIVE COMPONENTS.						
FOR 5 BAT USE		DA9535	18 TO 24 FT	FOR 6 BAT USE		DA9522 18 TO 24 FT
		DA9536	25 FT			DA9523 25 FT
		DA9774	30 FT			DA9763 30 FT
#B WHEN NOT EQUIPPED WITH ANY JD REEL DRIVE COMPONENTS. NOTE: JD SUPPLIES REEL DRIVE HYDRAULIC MOTOR.						
FOR 5 BAT USE		DA9537	18 TO 24 FT	FOR 6 BAT USE		DA9521 18 TO 24 FT
		DA9538	25 FT			DA9520 25 FT
		DA9775	30 FT			DA9762 30 FT
JOHN DEERE 200 SERIES HEADERS (EQUIPPED WITH JD FLATBAT REEL DRIVE COMPONENTS)						
18	J5-203()	DA9539	RH	J6-203()	DA9501	RH
20	J5-227()	DA9539	RH	J6-227()	DA9501	RH
22	J5-252()	DA9539	RH	J6-252()	DA9501	RH
24	J5-276()	DA9539	RH	J6-276()	DA9501	RH
30	J5-348()	DA9776	RH	J6-348()	DA9751	RH
JOHN DEERE 200 SERIES HEADERS (EQUIPPED WITH JD PICKUP REEL DRIVE COMPONENTS)						
18	J5-203()	DA9540	RH	J6-203()	DA9503	RH
20	J5-227()	DA9540	RH	J6-227()	DA9503	RH
22	J5-249()	DA9540	RH	J6-249()	DA9503	RH
24	J5-273()	DA9540	RH	J6-273()	DA9503	RH

J-21 pick-up reel

J21 SERIES CENTERTUBE & BATSHAFT REFERENCE CHART

8" DIA CENTER TUBE, 3 BATS PER BATSHAFT

NOMINAL HEADER LENGTH	REEL NUMBER	REEL CENTERTUBE		BATSHAFT ASSEMBLY NUMBER	INDIVIDUAL BAT LENGTHS		
		# BATS			LEFT	CENTER	RIGHT
17½	200	5	J53200	J8200	65½	57¼	65½
		6	J63200				
	201	5	J53201	J8201	66	58¼	66
		6	J63201				
18	203	5	J53203	J8203	65¼	61¼	65¼
		6	J63203				
	206	5	J53206	J8206	70½	53¾	70½
		6	J63206				
19	221	5	J53221	J8221	70½	68¾	70½
		6	J63221				

8" DIA CENTER TUBE, 4 BATS PER BATSHAFT

NOMINAL HEADER LENGTH	REEL NUMBER	REEL CENTERTUBE		BATSHAFT ASSEMBLY NUMBER	INDIVIDUAL BAT LENGTHS				
		# BATS			LEFT	CENTER	CENTER	RIGHT	
20	227	5	J54227	J8227	53 ³ / ₁₆	53 ³ / ₁₆	53 ³ / ₁₆	53 ³ / ₁₆	
		6	J64227						
	230	5	J54230	J8230	54 ⁵ / ₁₆	54 ⁵ / ₁₆	54 ⁵ / ₁₆	54 ⁵ / ₁₆	
		6	J64230						
231	231	5	J54231	J8231	54 ¹³ / ₁₆	54 ¹³ / ₁₆	54 ¹³ / ₁₆	54 ¹³ / ₁₆	
		6	J64231						
22	249	5	J54249	J8249	64	54 ³ / ₈	54 ³ / ₈	64	
		6	J64249						
	252	252	5	J54252	J8252	65½	54 ³ / ₈	54 ³ / ₈	65½
			6	J64252					
255	255	5	J54255	J8255	60 ¹¹ / ₁₆	60 ¹¹ / ₁₆	60 ¹¹ / ₁₆	60 ¹¹ / ₁₆	
		6	J64255						
22½	258	5	J54258	J8258	64 ³ / ₈	58¼	58¼	64 ³ / ₈	
		6	J64258						
	261	261	5	J54261	J8261	63¾	60 ³ / ₈	60 ³ / ₈	63¾
			6	J64261					

LOVE PICKUP REEL

8" DIA CENTER TUBE, 4 BATS PER BATSHAFT-(CONTINUED)

NOMINAL HEADER LENGTH	REEL NUMBER	REEL CENTERTUBE		BATSHAFT ASSEMBLY NUMBER	INDIVIDUAL BAT LENGTHS			
		# BATS			LEFT	CENTER	CENTER	RIGHT
24	273	5	J54273	J8273	66 ¹ / ₈	64 ¹ / ₄	64 ¹ / ₄	66 ¹ / ₈
		6	J64273					
	276	5	J54276	J8276	65 ¹⁵ / ₁₆	65 ¹⁵ / ₁₆	65 ¹⁵ / ₁₆	65 ¹⁵ / ₁₆
		6	J64276					
	279	5	J54279	J8279	68 ³ / ₄	64 ³ / ₈	64 ³ / ₈	68 ³ / ₄
		6	J64279					
25	291	5	J54291	J8291	70 ¹ / ₄	69 ¹ / ₈	69 ¹ / ₈	70 ¹ / ₄
		6	J64291					
	294	5	J54294	J8294	70 ⁷ / ₁₆	70 ⁷ / ₁₆	70 ⁷ / ₁₆	70 ⁷ / ₁₆
		6	J64294					

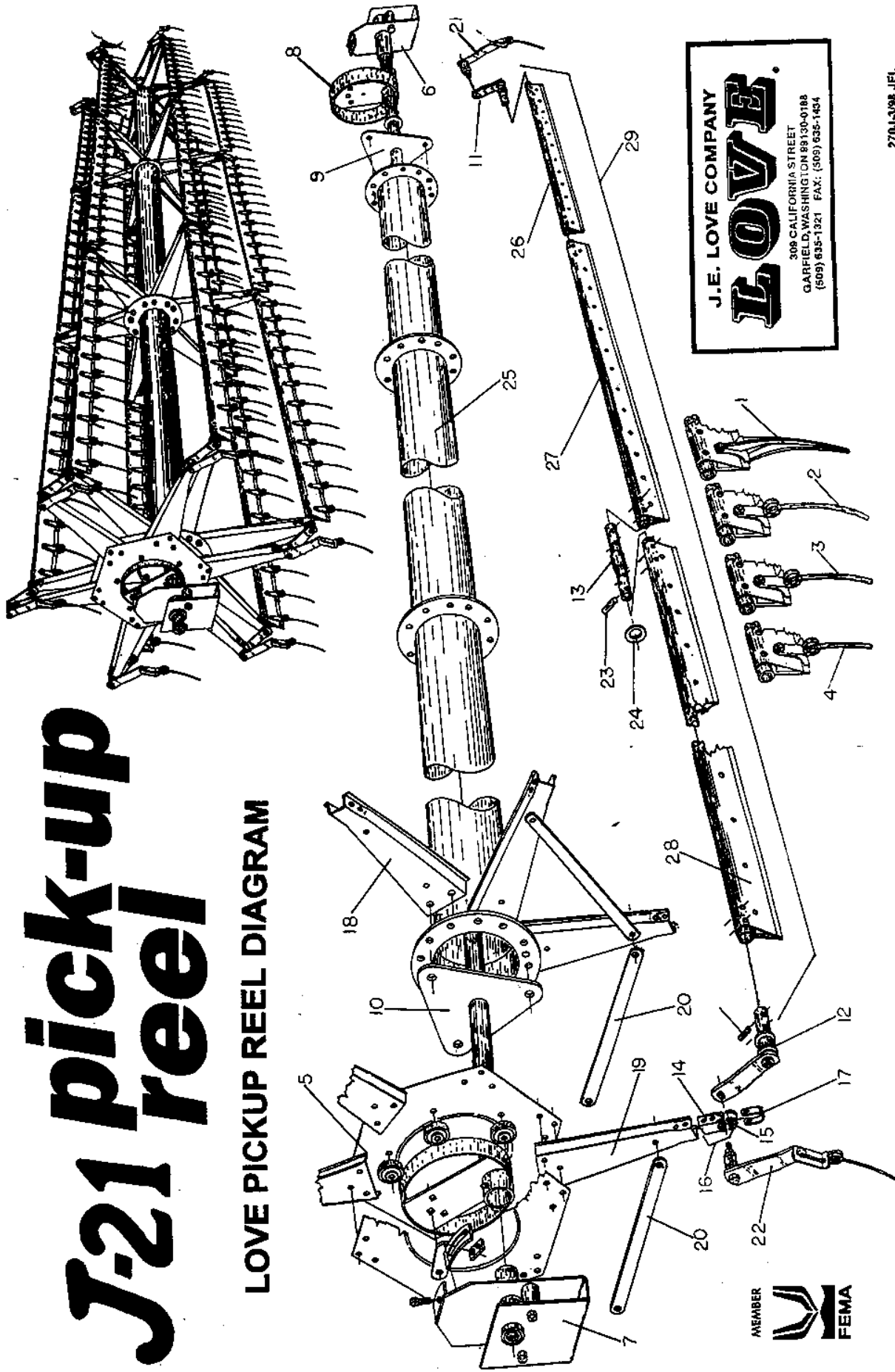
10" DIA CENTER TUBE, 5 BATS PER BATSHAFT

NOMINAL HEADER LENGTH	REEL NUMBER	REEL CENTERTUBE		BATSHAFT ASSEMBLY NUMBER	INDIVIDUAL BAT LENGTHS				
		# BATS			LEFT	CENTER	CENTER	CENTER	RIGHT
27	315	5	J55315	J8315	60	60	60	60	60
		6	J65315						
30	348	5	J55348	J8348	68 ⁷ / ₈	65 ¹ / ₂	65 ¹ / ₂	65 ¹ / ₂	68 ⁷ / ₈
		6	J65348						
	351	5	J55351	J8351	69 ¹ / ₄	66 ¹ / ₄	66 ¹ / ₄	66 ¹ / ₄	69 ¹ / ₄
		6	J65351						



J-21 pick-up reel

LOVE PICKUP REEL DIAGRAM



J.E. LOVE COMPANY
LOVE
 300 CALIFORNIA STREET
 GARFIELD, WASHINGTON 99130-0188
 (509) 635-1321 FAX: (509) 635-1404



270J-3/98 JEL

LOVE PICKUP REEL

KEY	PART NO.	DESCRIPTION
1	H3411	TINE, COMPOSITE ASSEMBLY (ORDER BY NO. H3452)
	H3452	PACKAGE - 10 H3411 TINE ASSEMBLY
2	H3433	TINE, 8" METAL FOR METAL BAT
	H3434	CLIP FOR H3433, H3461 & H3461 TINE. (REFER TO TINE DIAGRAM)
	H3454	BUTTON, USED W/H3434 (REFER TO TINE DIAGRAM)
3	H3460	TINE, 6" METAL FOR METAL BAT
4	H3461	TINE, 4" METAL FOR METAL BAT
5		ECCENTRIC SPIDER ASSEMBLY (REFER TO SPIDER DIAGRAM)
6		SUPPORT, REEL. LEFT END (REFER TO SPECIFIC MODEL DRIVE & ATTACHING KIT DA_____)
7		SUPPORT, REEL. RIGHT END (REFER TO SPECIFIC MODEL DRIVE & ATTACHING KIT DA_____)
8		ECCENTRIC, (REFER TO SPECIFIC MODEL DRIVE & ATTACHING KIT DA_____)
9		SHAFT, ECCENTRIC END.(REFER TO SPECIFIC MODEL DRIVE & ATTACHING KIT DA_____)
10		SHAFT, DRIVE END. (REFER TO SPECIFIC MODEL DRIVE & ATTACHING KIT DA_____)
11	J1001	JOURNAL, CRANK ARM - LEFT END
12	J1002	JOURNAL, CRANK ARM - RIGHT END
13	J1003	JOURNAL, CENTER
14	J1004	BEARING, BASE
15	J1005	BEARING, CAP
16	J1006	BEARING, SET (J1004 & J 1005)
17	J1007	U-STRAP
18	J1008	REEL ARM, J21 STANDARD
19	J1009	ECCENTRIC ARM
20	J1010	BRACE, ARM 5 BAT
	J1011	BRACE, ARM 6 BAT
21	J3450	OUTBOARD FINGER BRACKET - LEFT END (REFER TO OBF DIAGRAM)
22	J3455	OUTBOARD FINGER BRACKET - RIGHT END (REFER TO OBF DIAGRAM)
23	X3G375-150	ROLL PIN
24	X3D18712-2	MACHINE BUSHING
25	J53200	CENTER TUBE 8" DIA 5 BAT REEL #200
	J53201	CENTER TUBE 8" DIA 5 BAT REEL #201
	J53203	CENTER TUBE 8" DIA 5 BAT REEL #203
	J53206	CENTER TUBE 8" DIA 5 BAT REEL #206
	J53221	CENTER TUBE 8" DIA 5 BAT REEL #221
	J54227	CENTER TUBE 8" DIA 5 BAT REEL #227
	J54230	CENTER TUBE 8" DIA 5 BAT REEL #230
	J54231	CENTER TUBE 8" DIA 5 BAT REEL #231
	J54249	CENTER TUBE 8" DIA 5 BAT REEL #249
	J54252	CENTER TUBE 8" DIA 5 BAT REEL #252
	J54255	CENTER TUBE 8" DIA 5 BAT REEL #255
	J54258	CENTER TUBE 8" DIA 5 BAT REEL #258
	J54261	CENTER TUBE 8" DIA 5 BAT REEL #261
	J54273	CENTER TUBE 8" DIA 5 BAT REEL #273
	J54276	CENTER TUBE 8" DIA 5 BAT REEL #276
	J54279	CENTER TUBE 8" DIA 5 BAT REEL #279
	J54291	CENTER TUBE 8" DIA 5 BAT REEL #291
	J54294	CENTER TUBE 8" DIA 5 BAT REEL #294

LOVE PICKUP REEL

KEY	PART NO.	DESCRIPTION
	J55315	CENTER TUBE 10" DIA 5 BAT REEL #315
	J55348	CENTER TUBE 10" DIA 5 BAT REEL #348
	J55351	CENTER TUBE 10" DIA 5 BAT REEL #351
	J63200	CENTER TUBE 8" DIA 6 BAT REEL #200
	J63201	CENTER TUBE 8" DIA 6 BAT REEL #201
	J63203	CENTER TUBE 8" DIA 6 BAT REEL #203
	J63206	CENTER TUBE 8" DIA 6 BAT REEL #206
	J63221	CENTER TUBE 8" DIA 6 BAT REEL #221
	J64227	CENTER TUBE 8" DIA 6 BAT REEL #227
	J64230	CENTER TUBE 8" DIA 6 BAT REEL #230
	J64231	CENTER TUBE 8" DIA 6 BAT REEL #231
	J64249	CENTER TUBE 8" DIA 6 BAT REEL #249
	J64252	CENTER TUBE 8" DIA 6 BAT REEL #252
	J64255	CENTER TUBE 8" DIA 6 BAT REEL #255
	J64258	CENTER TUBE 8" DIA 6 BAT REEL #258
	J64261	CENTER TUBE 8" DIA 6 BAT REEL #261
	J64273	CENTER TUBE 8" DIA 6 BAT REEL #273
	J64276	CENTER TUBE 8" DIA 6 BAT REEL #276
	J64279	CENTER TUBE 8" DIA 6 BAT REEL #279
	J64291	CENTER TUBE 8" DIA 6 BAT REEL #291
	J64294	CENTER TUBE 8" DIA 6 BAT REEL #294
	J65315	CENTER TUBE 10" DIA 6 BAT REEL #315
	J65348	CENTER TUBE 10" DIA 6 BAT REEL #348
	J65351	CENTER TUBE 10" DIA 6 BAT REEL #351
26		METAL BAT - LEFT END. LESS TINES
27		METAL BAT - CENTER. LESS TINES
28		METAL BAT - RIGHT END. LESS TINES

NOTE: THE ABOVE METAL BAT DESCRIPTIONS ARE GIVEN TO INDICATE LOCATION OF THE BAT IN THE BATSHAFT ASSEMBLY.

NOTE: THE FOLLOWING METAL BAT PART NUMBERS DO NOT INCLUDE JOURNALS, END CRANKS OR TINES.

THE FOLLOWING BATSHAFT ASSEMBLY NUMBERS INCLUDE LEFT END CRANK, CENTER JOURNALS AND RIGHT END CRANK. TINES AND OUTBOARD FINGERS ARE NOT INCLUDED.

3 BATS PER BATSHAFT ASSEMBLY

KEY	BATSHAFT ASSEMBLY	METAL BAT PART NUMBERS			REEL #
		LEFT	CENTER	RIGHT	
29	J8200	J65500	J57750	J65500	200
	J8201	J68000	J58250	J66000	201
	J8203	J65250	J61250	J65250	203
	J8206	J70500	J53750	J70500	206
	J8221	J70500	J68750	J70500	221

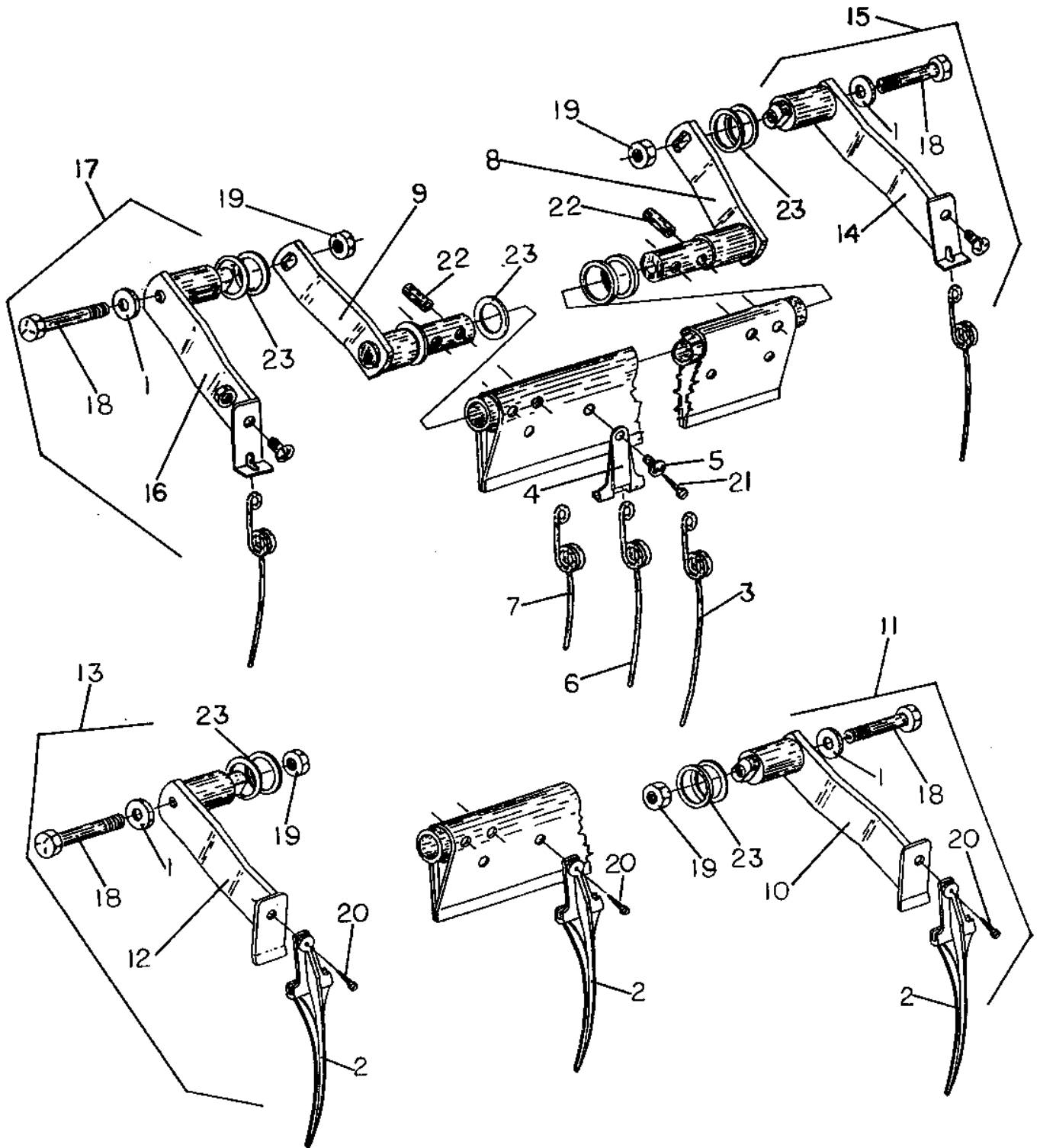
4 BATS PER BATSHAFT ASSEMBLY

KEY	BATSHAFT ASSEMBLY	METAL BAT PART NUMBERS				REEL #
		LEFT	CENTER	CENTER	RIGHT	
29	J8227	J53562	J53562	J53562	J53562	227
	J8230	J54312	J54312	J54312	J54312	230
	J8231	J54812	J54812	J54812	J54812	231
	J8249	J64000	J54375	J54375	J64000	249
	J8252	J65500	J54375	J54375	J65500	252
	J8255	J60687	J60687	J60687	J60687	255
	J8258	J64625	J58250	J58250	J64625	258
	J8261	J63750	J60625	J60625	J63750	261
	J8273	J66125	J64250	J64250	J66125	273
	J8276	J65937	J65937	J65937	J65937	276
	J8279	J68750	J64625	J64625	J68750	279
	J8291	J70250	J69125	J69125	J70250	291
	J8294	J70437	J70437	J70437	J70437	294

5 BATS PER BATSHAFT ASSEMBLY

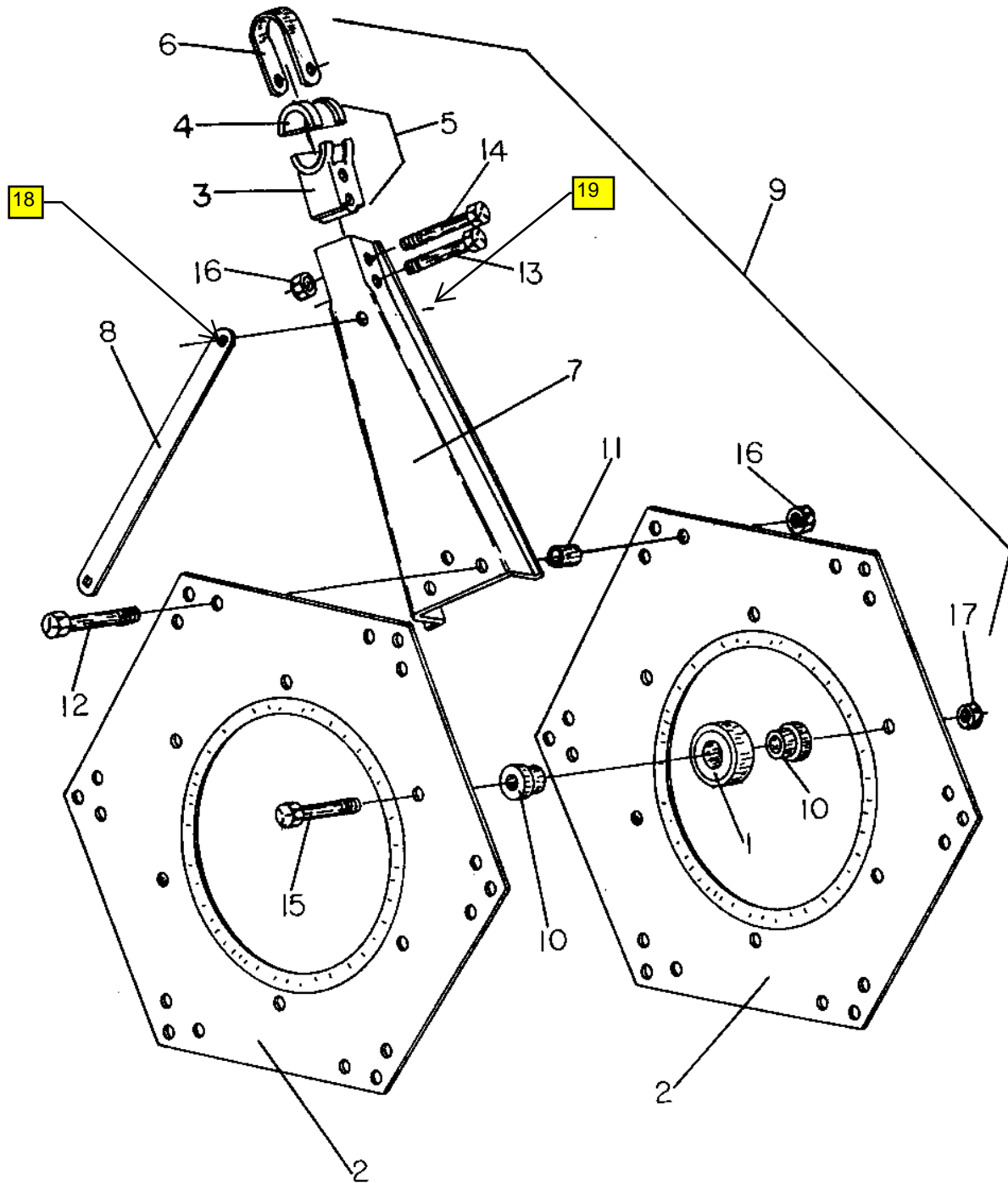
KEY	BATSHAFT ASSEMBLY	METAL BAT PART NUMBERS				REEL #
		LEFT	CENTER	CENTER	CENTER	
29	J8315	J60250	J60000	J60000	J60000	315
	J8348	J68875	J65500	J65500	J65500	348
	J8351	J69250	J66250	J66250	J66250	351

OUTBOARD FINGERS & CRANK ARM DIAGRAM



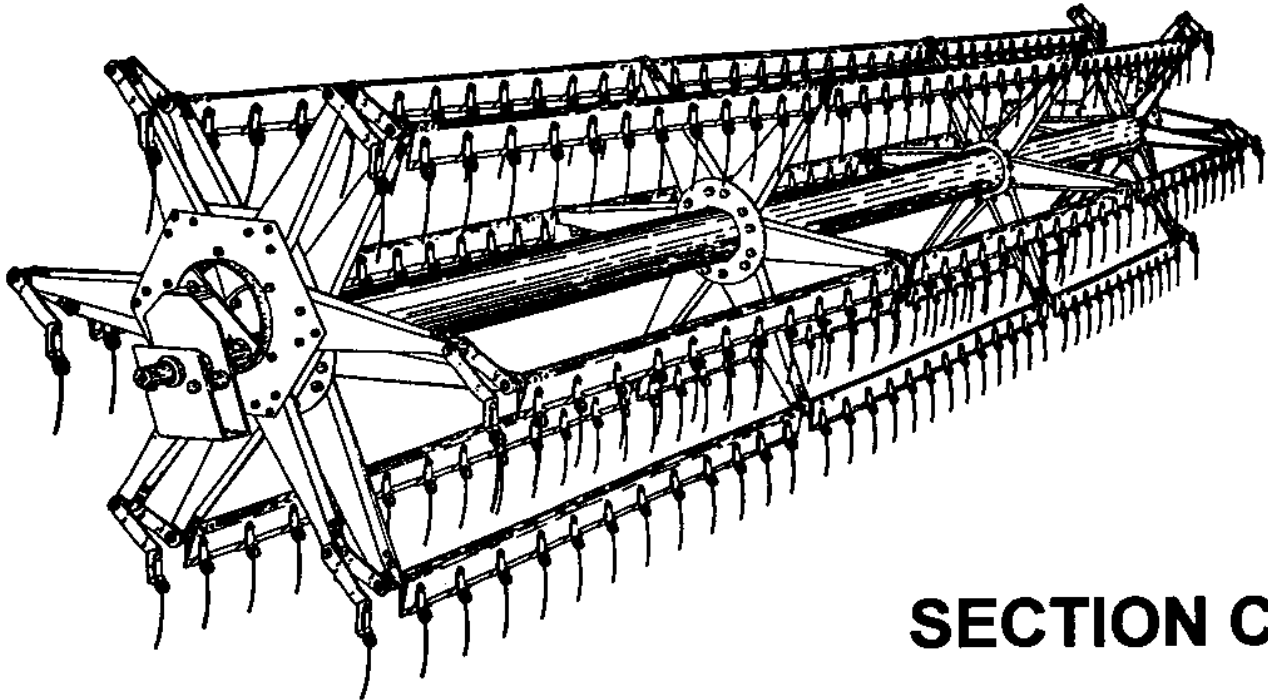
KEY	PART NO	DESCRIPTION
1	H293	WASHER, HEAVY DUTY
2	H3411	TINE, COMPOSITE ASSEMBLY (ORDER BY NO. H3452)
	H3452	PACKAGE - 10 H3411 TINE ASSEMBLY
3	H3433	TINE, 8" METAL FOR METAL BAT
4	H3434	CLIP FOR H3433, H3461 & H3461 TINE. (REFER TO TINE DIAGRAM)
5	H3454	BUTTON, USED W/H3434 (REFER TO TINE DIAGRAM)
6	H3460	TINE, 6" METAL FOR METAL BAT
7	H3461	TINE, 4" METAL FOR METAL BAT
8	J1001	JOURNAL, CRANK ARM - LEFT END
9	J1002	JOURNAL, CRANK ARM - RIGHT END
10	J3100	OUTBOARD FINGER BRACKET COMPOSITE TINE - LEFT END
11	J3101	OUTBOARD FINGER (OBF) ASSEMBLY, LEFT END
12	J3200	OUTBOARD FINGER BRACKET, COMPOSITE TINE - RIGHT END
13	J3201	OUTBOARD FINGER (OBF) ASSEMBLY, RIGHT END.
14	J3450	OUTBOARD FINGER BRACKET, LEFT END
15	J3451	OBF ASSEMBLY, W/H3461 - 4" TINE
	J3452	OBF ASSEMBLY, W/H3460 - 6 TINE
	J3453	OBF ASSEMBLY, W/H3433 - 8" TINE
16	J3455	OUTBOARD FINGER BRACKET, RIGHT END
17	J3456	OBF ASSEMBLY, W/H3461 - 4" TINE
	J3457	OBF ASSEMBLY, W/H3460 - 6 TINE
	J3458	OBF ASSEMBLY, W/H3433 - 8" TINE
18	X2A0430250	CAPSCREW, 7/16" - 14 UNC X 2-1/2"
19	X2E043-NF2	NUT, SIDELOCK 7/16 - 14 UNC
20	X2K0060062	SCREW, SELF TAP X 5/8"
21	X2K0060100	SCREW, SELF TAP X 1"
22	X3G375-150	ROLL PIN
23	X3D18712-2	MACHINE BUSHING

ECCENTRIC SPIDER ASSEMBLY DIAGRAM



KEY	PART NO	DESCRIPTION
1	H7022	ECCENTRIC ROLLER BEARING
2	H7025	ECCENTRIC SPIDER RING, 5 BAT
	H7026	ECCENTRIC SPIDER RING, 6 BAT
3	J1004	BEARING, BASE
4	J1005	BEARING, CAP
5	J1006	BEARING, SET (J1004 & J 1005)
6	J1007	U-STRAP
7	J1009	ECCENTRIC ARM
8	J1010	BRACE, ARM 5 BAT
	J1011	BRACE, ARM 6 BAT
9	J5141	SPIDER ASSEMBLY, 5 BAT
	J6141	SPIDER ASEMBLY, 6 BAT
10	J7023	BUSHING, ECCENTRIC BEARING
11	J7027	SPACER
12	X2A0310175	5/16 - 18 UNC X 1-3/4 CAP SCREW
13	X2A0310225	5/16 - 18 UNC X 2-1/4 CAP SCREW
14	X2A0310250	5/16 - 18 UNC X 2-1/2 CAP SCREW
15	X2A0430175	7/16 - 14 UNC X 1-3/4 CAP SCREW
16	X2E031-NF2	5/16 - 10 UNC NO FLANGE LOCKNUT
17	X2E043-NF2	7/16 - 14 UNC NO FLANGE LOCKNUT
18	7438-050	3/8-18 UNC X 1/2 HEX FLANGE SCREW, (SERRATED)
19	7722-114	HEX FLANGE NUT, 3/8 NC (SERRATED)

J-21 pick-up reel



SECTION C

SPECIFIC MODELS

DRIVE AND ATTACHING KITS

DRIVE & ATTACHING KITS ARE COMPOSED OF THE SPECIAL COMPONENTS REQUIRED TO DRIVE AND ATTACH THE LOVE PICKUP REEL TO THE SPECIFIC MAKE & MODEL OF COMBINE OR SWATHER, AND IN SOME CASES ANY OTHER SPECIAL SPECIFICATION.

DRIVE & ATTACHING KIT NUMBERS ARE IDENTIFIED BY NUMBER ON THE REEL SPECIFICATION PAGES OF THIS MANUAL. PLEASE CONTACT J. E. LOVE CO. FOR ADDITIONAL INFORMATION IF THE MAKE AND MODEL OF COMBINE OR SWATHER IS NOT LISTED.

PARTS ILLUSTRATION WILL BE PROVIDED FOR SPECIFIC DA KITS WITH LOVE PICKUP REEL ORDERS AND UPON REQUEST. THESE PAGES MAY BE INSERTED IN THIS MANUAL IN SECTION C.

J-21 pick-up reel

SPECIFIC MODEL DRIVE AND ATTACHING PARTS

AGCO

SECTION C

400 & 700 SERIES HEADERS	C1-A1, A3
SERIES 3 HEADERS	C1-A5, A7
SERIES 2 HEADERS	C1-A9, A11

CASE/IH

1010 & 1020 SERIES HEADERS (PIN JJC0200001)	C1-C1, C3
1010 & 1020 SERIES HEADERS (PRIOR TO PIN JJC0200001)	C1-C5, C7
810 & 8210 SERIES HEADERS (1979 & LATER).....	C1-C9, C11

JOHN DEERE

900 SERIES HEADERS	C1-JD1, JD3
200 SERIES HEADERS (EQUIPPED W/JD FIAT BAT DRIVE COMPONENTS).....	C1-JD5, JD7
200 SERIES HEADERS (EQUIPPED W/JD PICKUP DRIVE COMPONENTS).....	C1-JD9, JD11

J.E. LOVE COMPANY

LOVE®

309 CALIFORNIA STREET
P.O. BOX 188
GARFIELD, WASHINGTON 99130-0188
(509)635-1321 FAX: (509)635-1434

**J-21 pick-up
reel**

**SPECIFIC MODEL
DRIVE AND ATTACHING PARTS**

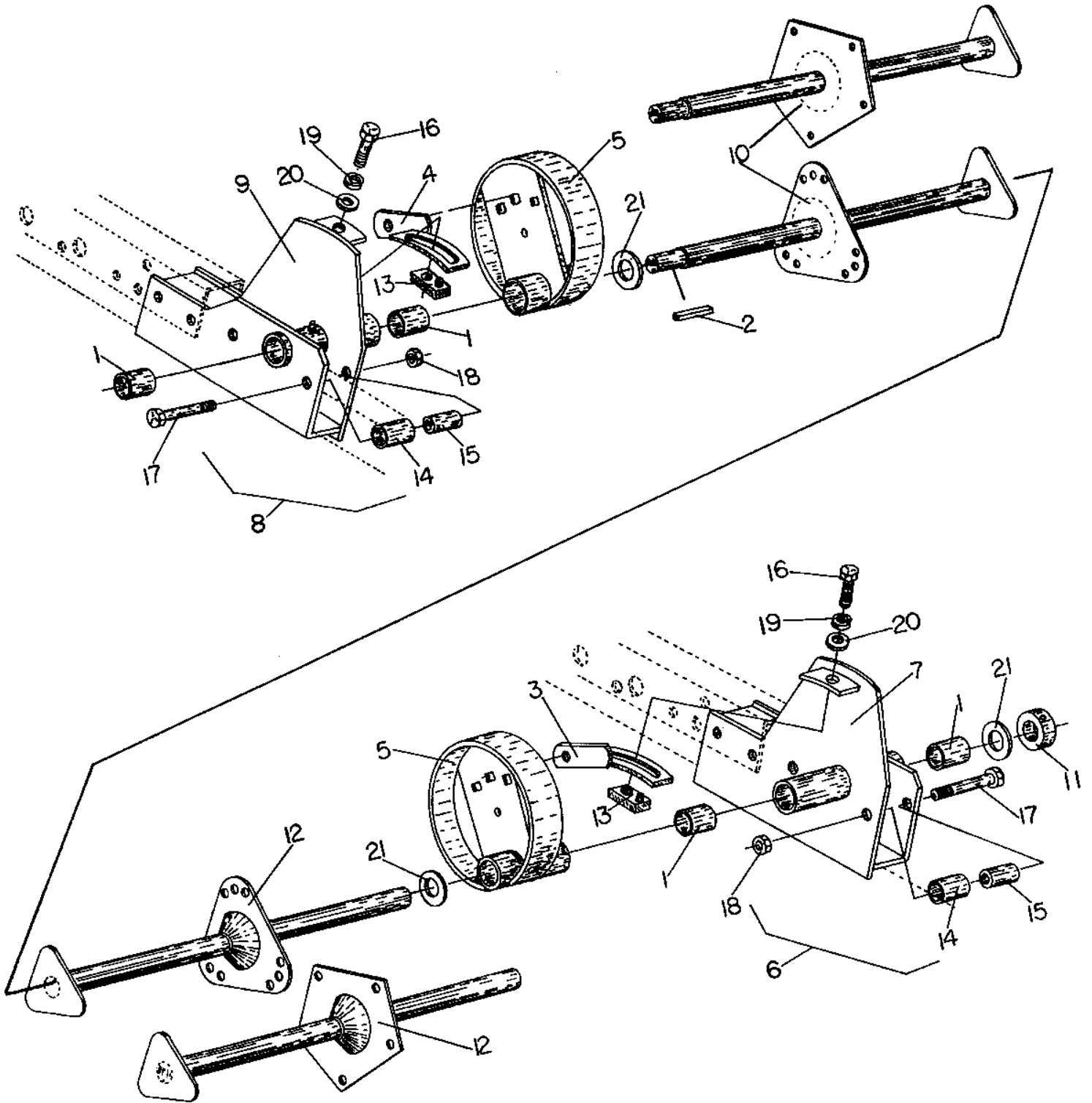
**AGCO 400 AND 700 SERIES
HEADER**

**5 BAT KITS
DA9529
DA9768**

**6 BAT KITS
DA9527
DA9766**

254J-3/98-JEL

**SPECIFIC MODEL DRIVE AND ATTACHING PARTS
AGCO 400 AND 700 HEADERS**



**SPECIFIC MODEL DRIVE AND ATTACHING PARTS
AGCO 400 AND 700 SERIES HEADERS**

KEY	PART NUMBER	DESCRIPTION
1	H272	Bearing, Bronze
2	H475	Key, 5/16" x 1.73" Sq.
3	H489	Arm, Pitch Control LH
4	H490	Arm, Pitch Control RH
5	H491	Eccentric
6	H632	Assembly, Reel Support LH
7	H633	Support, Reel LH
8	H634	Assembly, Reel Support RH
9	H635	Support, Reel RH
10	H636	Shaft, Drive End 8" Center, 6 Bat
	H637	Shaft, Drive End 10" Center, 6 Bat
	J500	Shaft, Drive End 8" Center, 5 Bat
	J502	Shaft, Drive End 10" Center, 5 Bat
11	H3399	Set Collar - 1-9/16"
12	HH447	Shaft, Eccentric End 8" Center, 6 Bat
	HH448	Shaft, Eccentric End 10" Center, 6 Bat
	J501	Shaft, Eccentric End 8" Center, 5 Bat
	J503	Shaft, Eccentric End 10" Center, 5 Bat
13	HH459	Lock Block
14	HH470	Roller, Reel Support
15	HH471	Spacer, Reel Support
16	X2A0500150	Capscrew, 1/2"-13 unc x 1-1/2"
17	X2A0500325	Capscrew, 1/2"-13 unc x 3-1/4"
18	X2E050-NF2	Nut, 1/2"-13 unc., No Flange Side Lock
19	X3B050	Lock Washer, 1/2"
20	X3C050	Flat Washer, 1/2"
21	X3D237016-2	Machine Bushing, 1-5/8" I.D. (3)
22	X3D25013-2	Machine Bushing, 1-3/8" I.D.

J.E. LOVE COMPANY

LOVE®

309 CALIFORNIA STREET
P.O. BOX 188
GARFIELD, WASHINGTON 99130-0188
(509)635-1321 FAX: (509)635-1434

**J-21 pick-up
reel**

**SPECIFIC MODEL
DRIVE AND ATTACHING PARTS**

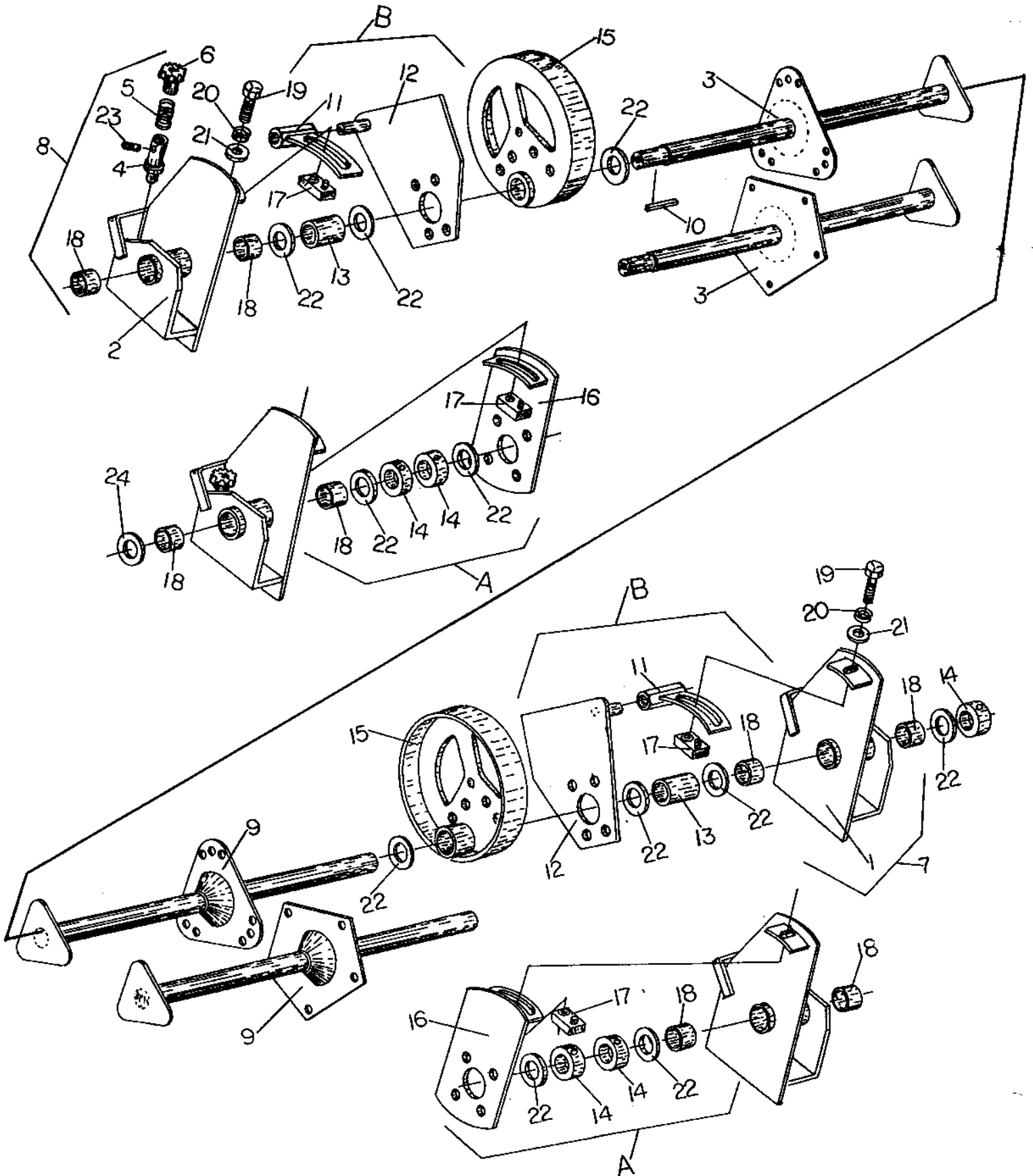
AGCO SERIES 3 HEADERS

**5 BAT KITS
DA9530
DA9769**

**6 BAT KITS
DA9512
DA9754**

260J-3/98-JEL

**SPECIFIC MODEL DRIVE AND ATTACHING PARTS
AGCO SERIES 3 HEADERS**



**SPECIFIC MODEL DRIVE AND ATTACHING PARTS
AGCO SERIES 3 HEADERS**

KEY	PART NO.	DESCRIPTION
1	H460	REEL SUPPORT W/BEARING, LH
2	H461	REEL SUPPORT W/BEARING, RH
3	H467	SHAFT, DRIVE END 8" DIA. CENTER TUBE - 6 BAT
	J521	SHAFT, DRIVE END 8" DIA. CENTER TUBE - 5 BAT
	H468	SHAFT, DRIVE END 10" DIA. CENTER TUBE - 6 BAT
	J522	SHAFT, DRIVE END 10" DIA. CENTER TUBE - 5 BAT
4	H464	LATCH PIN
5	H465	SPRING
6	H466	KNOB
7	H469	REEL SUPPORT ASSEMBLY, LH
8	H470	REEL SUPPORT ASSEMBLY, RH
9	H60210	SHAFT, ECCENTRIC END 8" DIA. CENTER TUBE - 6 BAT
	J508	SHAFT, ECCENTRIC END 8" DIA. CENTER TUBE - 5 BAT
	H471	SHAFT, ECCENTRIC END 10" DIA. CENTER TUBE - 6 BAT
	J503	SHAFT, ECCENTRIC END 10" DIA. CENTER TUBE - 5 BAT
10	H475	KEY, 5/16" X 1.73"
11	H482	ARM, PITCH CONTROL
12	H483	PLATE, PITCH CONTROL
13	H454	SPACER, 1.50 BORE X 2.38 - 8" & 10" CENTER
14	H3302	SET COLLAR, 1-1/2"
15	H7035	ECCENTRIC, 1-1/2"
16	HH458	PLATE, PITCH CONTROL
17	HH459	LOCK BLOCK
18	HH1505	BUSHING, 1-1/2"
19	X2A0500150	CAPSCREW, 1/2-13 UNC X1-1/2"
20	X3B050	LOCKWASHER, 1/2"
21	X3C050	FLATWASHER, 1/2"
22	X3D22515-2	MACHINERY BUSHING, 1-1/2" I.D.
23	X3G188-150	SPRING PIN
24	X3D25013-2	MACHINERY BUSHING, 1-3/8" I.D.

J.E. LOVE COMPANY

LOVE®

309 CALIFORNIA STREET
P.O. BOX 188
GARFIELD, WASHINGTON 99130-0188
(509)635-1321 FAX: (509)635-1434

**J-21 pick-up
reel**

**SPECIFIC MODEL
DRIVE AND ATTACHING PARTS**

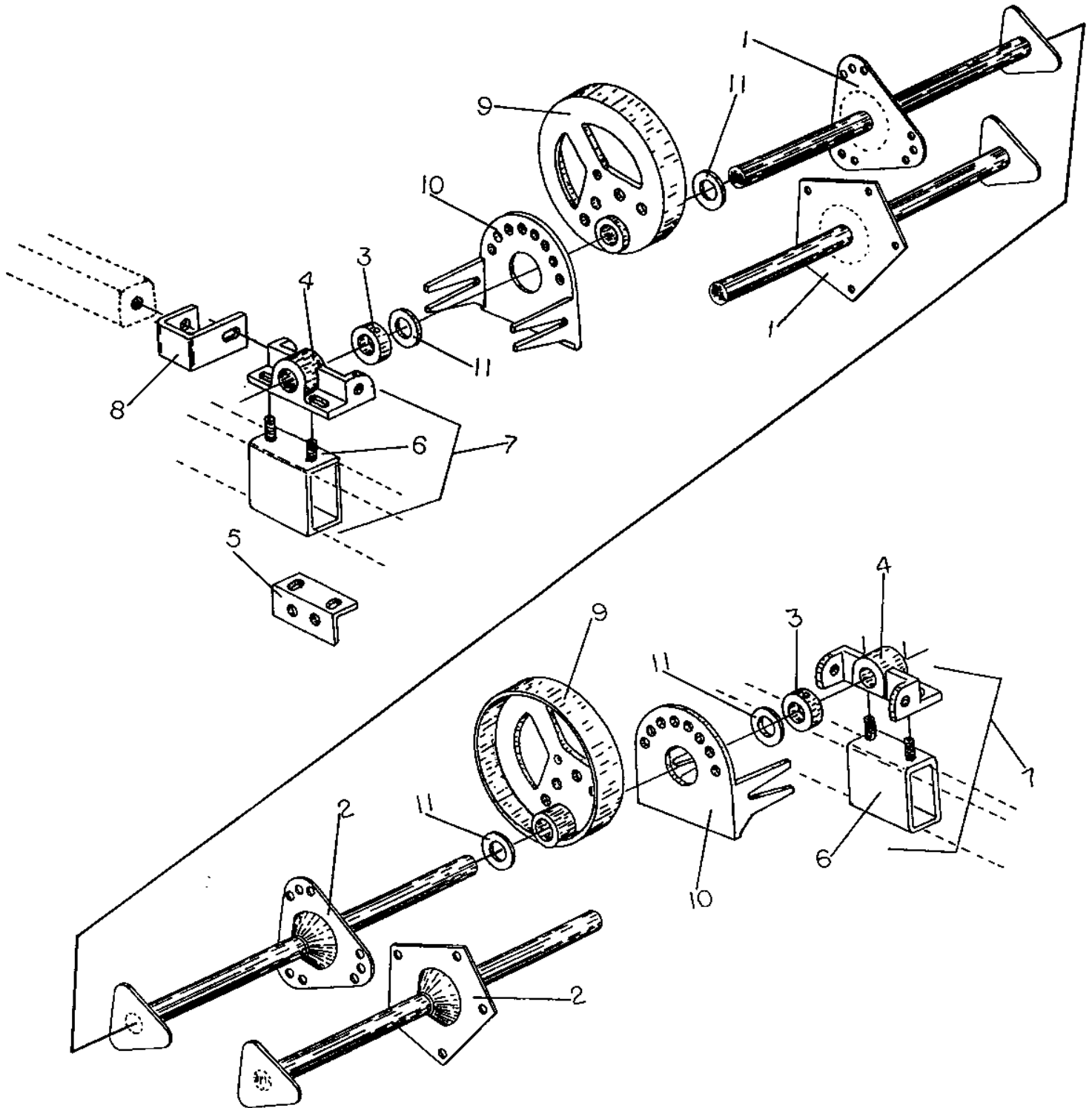
AGCO SERIES 2 HEADERS

**5 BAT KITS
DA9542**

**6 BAT KITS
DA9001**

257J-3/98-JEL

**SPECIFIC MODEL DRIVE AND ATTACHING PARTS
AGCO SERIES 2 HEADERS**



**SPECIFIC MODEL DRIVE AND ATTACHING PARTS
AGCO SERIES 2 HEADERS**

KEY	PART NO.	DESCRIPTION
1	H60201	SHAFT, DRIVE END 8" DIA. CENTER TUBE 6 BAT
	J523	SHAFT, DRIVE END 8" DIA. CENTER TUBE - 5 BAT
2	H60210	SHAFT, ECCENTRIC END 8" DIA. CENTER TUBE 6 BAT
	J508	SHAFT, ECCENTRIC END 8" DIA. CENTER TUBE 5 BAT
3	H3302	SET COLLAR 1-1/2"
4	H3382	END BEARING 1-1/2"
5	H3357	CARRIER ARM BRACKET - ANGLE (OPTIONAL)
6	H3366	BRACKET, CARRIER ARM, BOX TYPE
7	H3401	END BEARING ASSEMBLY 1-1/2"
8	H3471	DRIVE ATTACHMENT, BRACKET
9	H7035	ECCENTRIC 1-1/2"
10	H7021	PLATE, PITCH CONTROL
11	X3D22515-2	MACHINERY BUSHING 1-1/2" I.D.

J.E. LOVE COMPANY

LOVE®

309 CALIFORNIA STREET
P.O. BOX 188
GARFIELD, WASHINGTON 99130-0188
(509)635-1321 FAX: (509)635-1434

***J-21 pick-up
reel***

**SPECIFIC MODEL
DRIVE AND ATTACHING PARTS**

JOHN DEERE 900 SERIES

EQUIPPED WITH JD PICKUP DRIVE

5 BAT KITS

DA9541

DA9534

DA9773

6 BAT KITS

DA9524

DA9525

DA9765

EQUIPPED WITH FLAT BAT DRIVE

5 BAT KITS

DA9535

DA9536

DA9774

6 BAT KITS

DA9522

DA9523

DA9763

NOT EQUIPPED WITH ANY JD REEL DRIVE

5 BAT KITS

DA9537

DA9538

DA9775

6 BAT KITS

DA9521

DA9520

DA9762

255J-3/98-JEL

**SPECIFIC MODEL DRIVE AND ATTACHING PARTS
JOHN DEERE 900 SERIES HEADERS**

KEY	PART NO.	DESCRIPTION
1	F1555	HOSE ASSEMBLY, 1/2" X 22"
2	F1600	HOSE ASSEMBLY, 1/2" X 101"
3	F1601	CONNECTOR, STD THD, 5/8" 37° TUBE X #10 ORB SAE
4	F1756	BULKHEAD UNION ELBOW, W/NUT, 1/2" 37° JIC ENDS
5	J516	SHAFT, DRIVE END 5 BAT - 8" DIA. CENTER TUBE - 922 & 924
	J517	SHAFT, DRIVE END 5 BAT - 8" DIA. CENTER TUBE - 925 ONLY
	J518	SHAFT, DRIVE END 5 BAT - 10" DIA. CENTER TUBE
	H249	SHAFT, DRIVE END 6 BAT - 8" DIA. CENTER TUBE - 922 & 924
	H639	SHAFT, DRIVE END 6 BAT - 8" DIA. CENTER TUBE - 925 ONLY
	H267	SHAFT, DRIVE END 6 BAT - 10" DIA. CENTER TUBE
6	H250	GEAR, PINION
7	H251	GEAR, SPUR
8	H252	SHIELD
9	H253	PIN, CLEVIS 3/8" X 3" PLATED
10	H254	CLAMP, 7/8 PAIR (2 PCS)
11	H255	PLATE, SAFETY
12	H256	PLATE, PINION
13	H257	BUSHING, PINION
14	H258	CLAMP, TUBE 2 OF 7/8
15	H272	BEARING, BRONZE
16	H281	REEL SUPPORT - RH JD922, 924 & 930
	H285	REEL SUPPORT - RH JD913, 915, 918, & 920
	H289	REEL SUPPORT - RH JD925
17	H282	REEL SUPPORT ASSEMBLY, RH JD922, 924, & 930
	H286	REEL SUPPORT ASSEMBLY, RH JD913, 915, 918 & 920
	H290	REEL SUPPORT ASSEMBLY, RH JD925
18	H283	REEL SUPPORT - LH JD922, 924, & 930
	H287	REEL SUPPORT - LH JD913, 915, 918, & 920
	H291	REEL SUPPORT - LH JD925
19	H284	REEL SUPPORT ASSEMBLY, LH JD922, 924, 930
	H288	REEL SUPPORT ASSEMBLY, LH JD913, 915, 918 & 920
	H292	REEL SUPPORT ASSEMBLY, LH JD925
20	H489	ARM, PITCH CONTROL - LH
21	H490	ARM, PITCH CONTROL - RH
22	H491	ECCENTRIC (EXCEPT 925)
	H499	ECCENTRIC, JD 925
23	H3257	KEY, 3/8" X 2-1/4" SQUARE
24	H3399	SET COLLAR, 1-9/16"
25	J501	SHAFT, ECCENTRIC END 5 BAT - 8" DIA. CENTER TUBE
	J503	SHAFT, ECCENTRIC END 5 BAT - 10" DIA. CENTER TUBE
	HH447	SHAFT, ECCENTRIC END 6 BAT - 8" DIA. CENTER TUBE
	HH448	SHAFT, ECCENTRIC END 6 BAT - 10" DIA. CENTER TUBE
26	HH459	LOCK BLOCK
27	HH470	ROLLER, REEL SUPPORT
28	HH471	SPACER, REEL SUPPORT
29	X2A0310050	CAPSCREW, 5/16"-18 UNC X 1/2"
30	X2A0310075	CAPSCREW, 5/16"-18 UNC X 3/4"
31	X2A0310175	CAPSCREW, 5/16"-18 UNC X 1-3/4"
32	X2A0310200	CAPSCREW, 5/16"-18 UNC X 2"
33	X2A0310400	CAPSCREW, 5/16"-18 UNC X 4"
34	X2A0370100	CAPSCREW, 3/8"-16 UNC X 1"
35	X2A0500150	CAPSCREW, 1/2"-13 UNC X 1-1/2"
36	X2A0500325	CAPSCREW, 1/2"-13 UNC X 3-1/4"
37	X2E031-SF2	NUT, 5/16"-18 UNC SMALL FLANGE SIDE LOCK
38	X2E050-NF2	NUT, 1/2"-13 UNC NO FLANGE SIDELOCK
39	X2F037100	SETSCREW, SQUARE HEAD PLATED, 3/8"-16 UNC X 1"
40	X3B050	LOCKWASHER, 1/2"
41	X3C050	FLATWASHER, 1/2"
42	X3D237016-2	MACHINE BUSHING, 1-5/8" ID
43	X3D25013-2	MACHINE BUSHING, 1-3/8" ID
44	S11004	HAIR PIN CLIP

J.E. LOVE COMPANY

LOVE®

309 CALIFORNIA STREET
P.O. BOX 188
GARFIELD, WASHINGTON 99130-0188
(509)635-1321 FAX: (509)635-1434

***J-21 pick-up
reel***

JOHN DEERE 200 SERIES

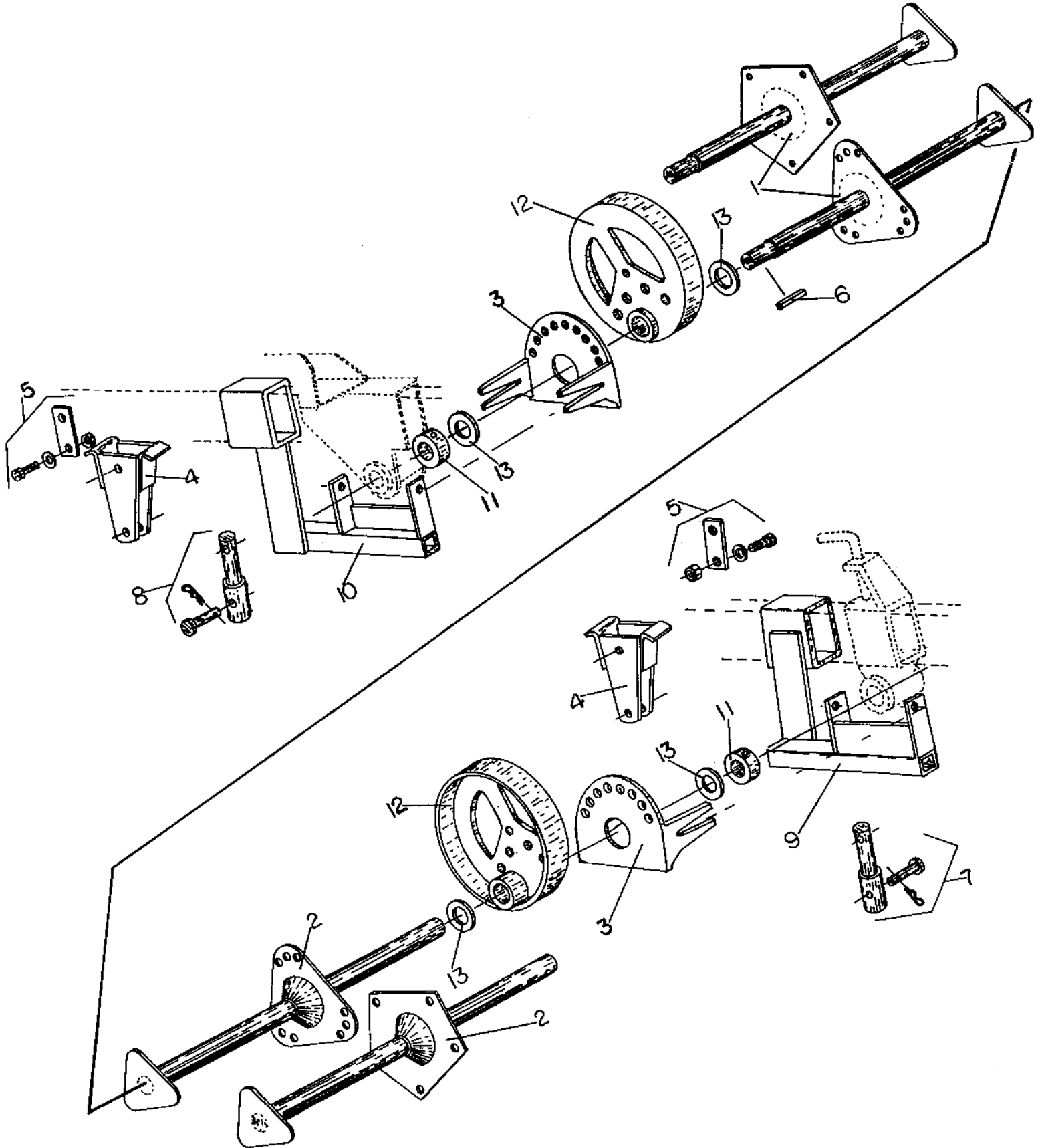
EQUIPPED WITH JD FLAT BAT DRIVE COMPONENTS

**SPECIFIC MODEL
DRIVE AND ATTACHING PARTS**

**5 BAT KITS
DA9539
DA9776**

**6 BAT KITS
DA9501
DA9751**

SPECIFIC MODEL DRIVE AND ATTACHING PARTS
JOHN DEERE 200 SERIES HEADERS EQUIPPED W/JD FLATBAT REEL DRIVE COMPONENTS
5 BAT - DA9539 & DA9776 6 BAT - DA9501 & DA9751



SPECIFIC MODEL DRIVE AND ATTACHING PARTS
JOHN DEERE 200 SERIES HEADERS EQUIPPED W/JD FLATBAT REEL DRIVE COMPONENTS
5 BAT - DA9539 & DA9776 6 BAT - DA9501 & DA9751

KEY	PART NO.	DESCRIPTION
1	J509	SHAFT, DRIVE END 5 BAT - 8" DIA. CENTER TUBE
	J519	SHAFT, DRIVE END 5 BAT - 10" DIA. CENTER TUBE
	H60207	SHAFT, DRIVE END 6 BAT - 8" DIA. CENTER TUBE
	H437	SHAFT, DRIVE END 6 BAT - 10" DIA. CENTER TUBE
2	J510	SHAFT, ECCENTRIC END 5 BAT - 8" DIA. CENTER TUBE
	J520	SHAFT, ECCENTRIC END 5 BAT - 10" DIA. CENTER TUBE
	H60209	SHAFT, ECCENTRIC END 6 BAT - 8" DIA. CENTER TUBE
	H438	SHAFT, ECCENTRIC END 6 BAT - 10" DIA. CENTER TUBE
3	H3250	PLATE, PITCH CONTROL
4	H3255	EXTENSION, LIFT CYLINDER (82 & LATER)
5	H3256	STRAP, LIFT CYLINDER
6	H3257	KEY, 3/8" X 2-1/4" SQ
7	H3276	EXTENSION, LIFT CYLINDER 1" DIA.
8	H3277	EXTENSION, LIFT CYLINDER 1-1/8" DIA.
9	H3298	BRACKET, PITCH CONTROL LH
10	H3299	BRACKET, PITCH CONTROL RH
11	H3301	SET COLLAR, 1-3/8"
12	H7034	ECCENTRIC, 1-3/8"
13	X3D25013-2	MACHINERY BUSHING, 1-3/8"

J.E. LOVE COMPANY

LOVE®

309 CALIFORNIA STREET
P.O. BOX 188
GARFIELD, WASHINGTON 99130-0188
(509)635-1321 FAX: (509)635-1434

***J-21 pick-up
reel***

**SPECIFIC MODEL
DRIVE AND ATTACHING PARTS**

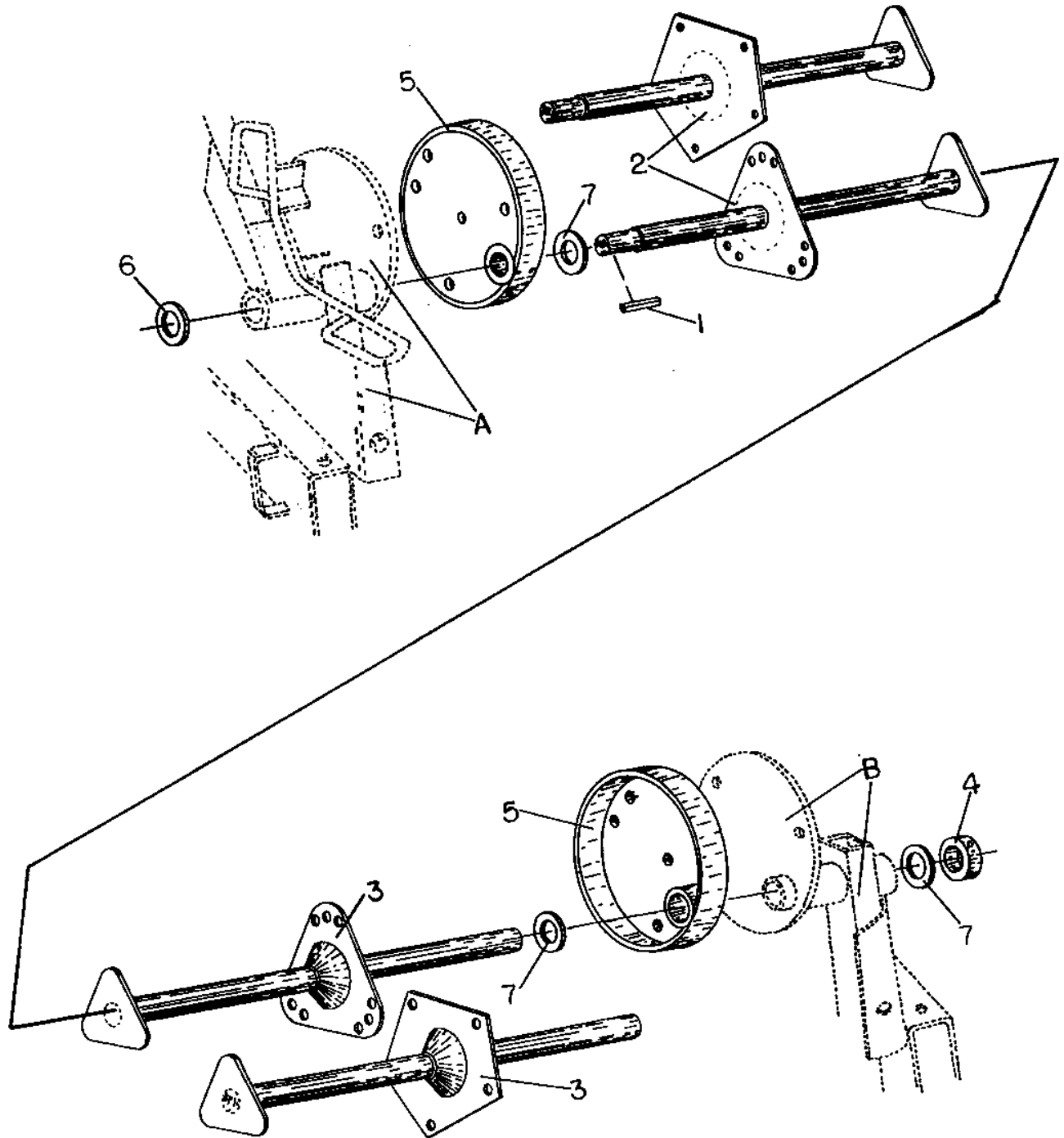
JOHN DEERE 200 SERIES

EQUIPPED WITH JD PICKUP DRIVE COMPONENTS

**5 BAT KITS
DA9540**

**6 BAT KITS
DA9503**

SPECIFIC MODEL DRIVE AND ATTACHING PARTS
JOHN DEERE 200 SERIES HEADERS EQUIPPED W/JD PICKUP REEL DRIVE COMPONENTS
5 BAT - DA9540 & 6 BAT - DA9503



SPECIFIC MODEL DRIVE AND ATTACHING PARTS
JOHN DEERE 200 SERIES HEADERS EQUIPPED W/JD PICKUP REEL DRIVE COMPONENTS
5 BAT - DA9540 & 6 BAT - DA9503

KEY	PART NO.	DESCRIPTION
1	H3257	KEY, 3/8" X 2-1/4" SQ
2	J524	SHAFT, DRIVE END 5 BAT - 8" DIA. CENTER TUBE
	H6012	SHAFT, DRIVE END 6 BAT - 8" DIA CEDNTER TUBE
3	J501	SHAFT, ECCENTRIC END 5 BAT - 8" DIA. CENTER TUBE
	HH447	SHAFT, ECCENTRIC END 6 BAT - 8" DIA. CENTER TUBE
4	H3399	SET COLLAR, 1-9/16"
5	H7039	ECCENTRIC, JD213 & 224 - 2.25 WIDE
	H7068	ECCENTRIC, JD222 - 3.25 WIDE
	H7069	ECCENTRIC, NARROW, JD215, 216, 218, & 220 - 1.90 WIDE
6	X3D25013-2	MACHINERY BUSHING, 1-3/8"
7	X3D237016-2	MACHINERY BUSHING, 1-5/8"

- A. RIGHT HAND: JOHN DEERE BUNDLES BH76691 (OR BH76165) RIGHT HAND CARRIER ARM ADAPTER WITH MOTOR MOUNT AND BH76689, SHIELD AND SPROCKET.
- B. LEFT HAND. JOHN DEERE BUNDLE BH77559, LEFT HAND CARRIER ARM ADAPTER.

INSTALLER MUST HAVE THESE BUNDLES FROM JOHN DEERE BEFORE THE REEL CAN BE INSTALLED.

J.E. LOVE COMPANY

LOVE®

309 CALIFORNIA STREET
P.O. BOX 188
GARFIELD, WASHINGTON 99130-0188
(509)635-1321 FAX: (509)635-1434

***J-21 pick-up
reel***

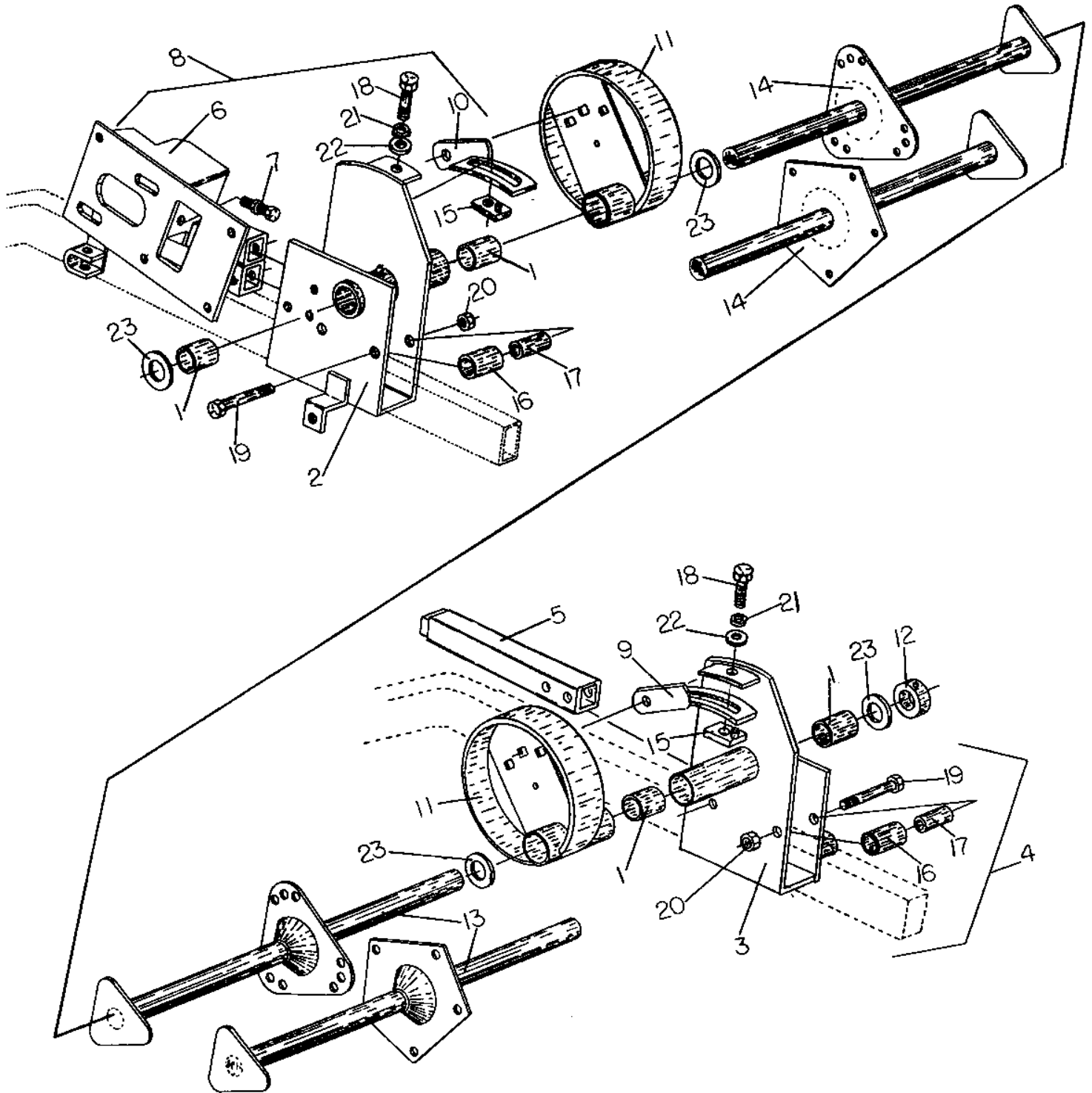
**SPECIFIC MODEL
DRIVE AND ATTACHING PARTS**

**CASE 1010 & 1020
PIN #JJC020001AND LATER**

**5 BAT KITS
DA9531
DA9770**

**6 BAT KITS
DA9528
DA9767**

**SPECIFIC MODEL DRIVE AND ATTACHING PARTS
CASE/IH 1010 & 1020 HEADERS, P.I.N. JJC0200001 & AFTER
5 BAT - DA9531 & DA9770
6 BAT - DA9528 & DA9767**



**SPECIFIC MODEL DRIVE AND ATTACHING PARTS
CASE/H 1010 & 1020 HEADERS, P.I.N. JJC0200001 & AFTER
5 BAT - DA9531 & DA9770
6 BAT - DA9528 & DA9767**

<u>KEY</u>	<u>PART NO.</u>	<u>DESCRIPTION</u>
1	H272	BEARING, BRONZE
2	H276	SUPPORT, REEL - RH
3	H278	SUPPORT, REEL - LH
4	H279	ASSEMBLY, REEL SUPPORT - LH
5	H456	ADJUSTER, FORE & AFT. - LH [(A) MANUAL FORE & AFT ONLY]
6	H457	MOUNT, SHIELD AND HYD. MOTOR - RH
7	H458	CAPSCREW, 3/4-10 X 3" FULL THREAD, ADJ.
8	H459	ASSEMBLY, REEL SUPPORT - RH
9	H489	ARM, PITCH CONTROL - LH
10	H490	ARM, PITCH CONTROL - RH
11	H491	ECCENTRIC
12	H3399	SET COLLAR, 1-9/16"
13	J501	SHAFT, ECCENTRIC END, 5 BAT - 8" DIA. CTR TUBE
	J503	SHAFT, ECCENTRIC END, 5 BAT - 10" DIA. CTR TUBE
	HH447	SHAFT, ECCENTRIC END, 6 BAT - 8" DIA. CTR TUBE
	HH448	SHAFT, ECCENTRIC END, 6 BAT - 10" DIA. CTR TUBE
14	J512	SHAFT, DRIVE END, 5 BAT - 8" DIA. CENTER TUBE
	J511	SHAFT, DRIVE END, 5 BAT - 10" DIA. CENTER TUBE
	H295	SHAFT, DRIVE END, 6 BAT - 8" DIA. CENTER TUBE
	H294	SHAFT, DRIVE END, 6 BAT - 10" DIA. CENTER TUBE
15	HH459	LOCK BLOCK
16	HH470	ROLLER, REEL SUPPORT
17	HH471	SPACER, REEL SUPPORT
18	X2A0500150	CAPSCREW, 1/2-13 UNC X 1-1/2"
19	X2A0500325	CAPSCREW, 1/2-13 UNC X 3-1/4"
20	X2E050-NF2	NUT, 1/2-13 UNC NO FLANGE SIDELOCK
21	X3B050	LOCKWASHER, 1/2"
22	X3C050	FLATWASHER, 1/2"
23	X3D237016-2	MACHINERY BUSHING, 1-5/8" I.D.

(A) NOT INCLUDED IN DA KITS. IF MANUAL (SCREW TYPE) FORE & AFT REEL POSITION IS USED, ORDER 1 EA. H456.

J.E. LOVE COMPANY

LOVE®

309 CALIFORNIA STREET
P.O. BOX 188
GARFIELD, WASHINGTON 99130-0188
(509)635-1321 FAX: (509)635-1434

***J-21 pick-up
reel***

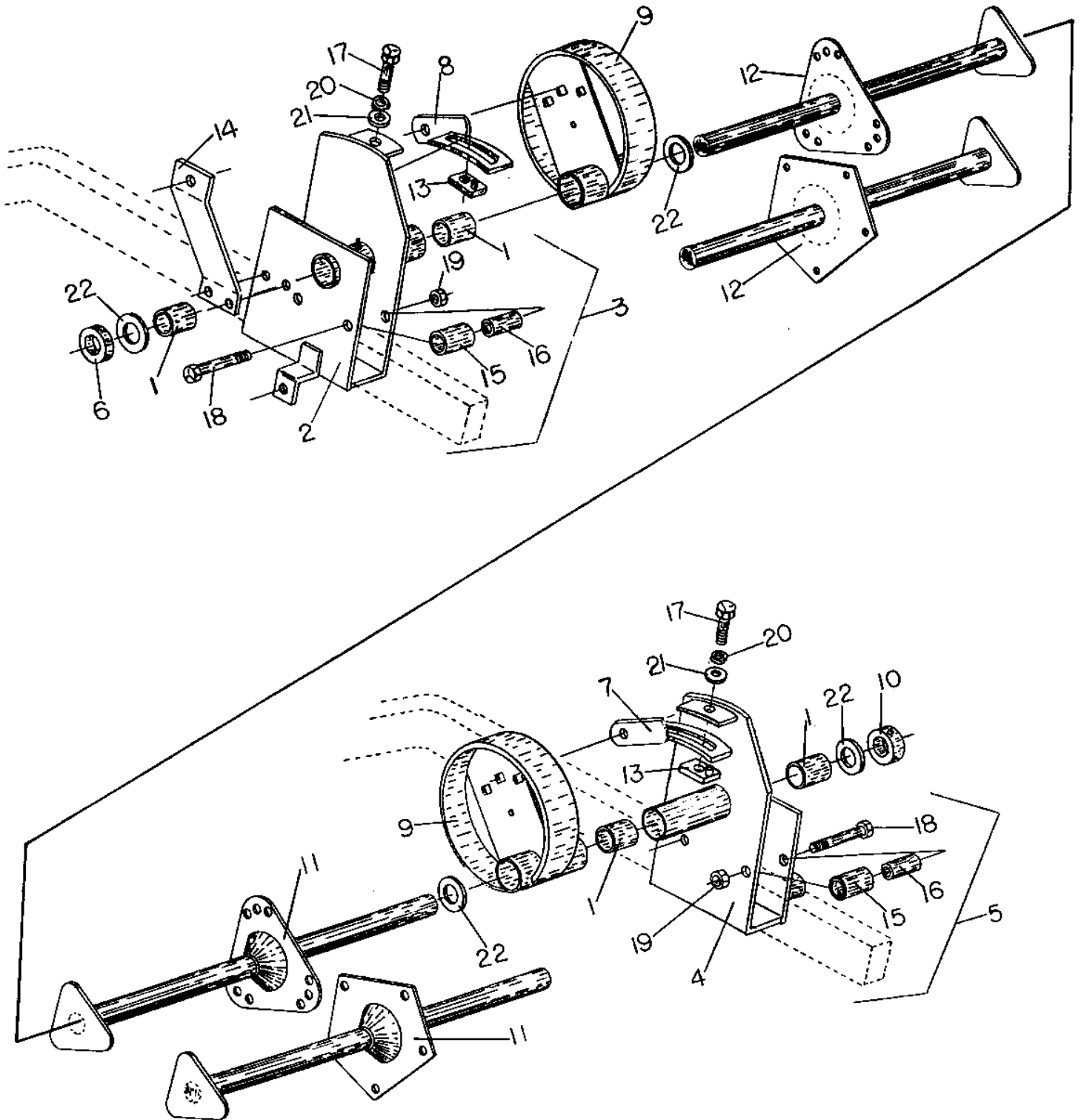
**SPECIFIC MODEL
DRIVE AND ATTACHING PARTS**

**CASE 1010 & 1020
PRIOR TO PIN #JJC020001**

**5 BAT KITS
DA9532
DA9771**

**6 BAT KITS
DA9529
DA9761**

SPECIFIC MODEL DRIVE AND ATTACHING PARTS
CASE 1010 & 1020
PRIOR TO PIN #JJC020001



SPECIFIC MODEL DRIVE AND ATTACHING PARTS

CASE/IH 1010 & 1020 HEADERS PRIOR TO PIN #JJC0200001

5 BAT - DA9532 & DA9771

6 BAT - DA9519 & DA9761

KEY	PART NO.	DESCRIPTION
1	H272	BEARING, BRONZE
2	H276	SUPPORT, REEL - RH
3	H277	ASSEMBLY, REEL SUPPORT - RH
4	H278	SUPPORT, REEL LH
5	H279	ASSEMBLY, REEL SUPPORT - LH
6	H280	SPACER
7	H489	ARM, PITCH CONTROL - LH
8	H490	ARM, PITCH CONTROL - RH
9	H491	ECCENTRIC
10	H3399	SET COLLAR, 1-9/16"
11	J501	SHAFT, ECCENTRIC END, 5 BAT - 8" DIA. CTR TUBE
	J503	SHAFT, ECCENTRIC END, 5 BAT - 10" DIA. CTR TUBE
	HH447	SHAFT, ECCENTRIC END, 6 BAT - 8" DIA. CTR TUBE
	HH448	SHAFT, ECCENTRIC END, 6 BAT - 10" DIA. CTR TUBE
12	J514	SHAFT, DRIVE END, 5 BAT - 8" DIA. CENTER TUBE
	J513	SHAFT, DRIVE END, 5 BAT - 10" DIA. CENTER TUBE
	HH450	SHAFT, DRIVE END, 6 BAT - 8" DIA. CENTER TUBE
	HH451	SHAFT, DRIVE END, 6 BAT - 10" DIA. CENTER TUBE
13	HH459	LOCK BLOCK
14	HH464	REEL SHIELD BRACE
15	HH470	ROLLER, REEL SUPPORT
16	HH471	SPACER, REEL SUPPORT
17	X2A0500150	CAPSCREW, 1/2-13 UNC X 1-1/2"
18	X2A0500325	CAPSCREW, 1/2-13 UNC X 3-1/4"
19	X2E050-NF2	NUT, 1/2-13 UNC NO FLANGE SIDELOCK
20	X3B050	LOCKWASHER, 1/2"
21	X3C050	FLATWASHER, 1/2"
22	X3D237016-2	MACHINERY BUSHING, 1-5/8" I.D.

J.E. LOVE COMPANY

LOVE®

309 CALIFORNIA STREET
P.O. BOX 188
GARFIELD, WASHINGTON 99130-0188
(509)635-1321 FAX: (509)635-1434

**J-21 pick-up
reel**

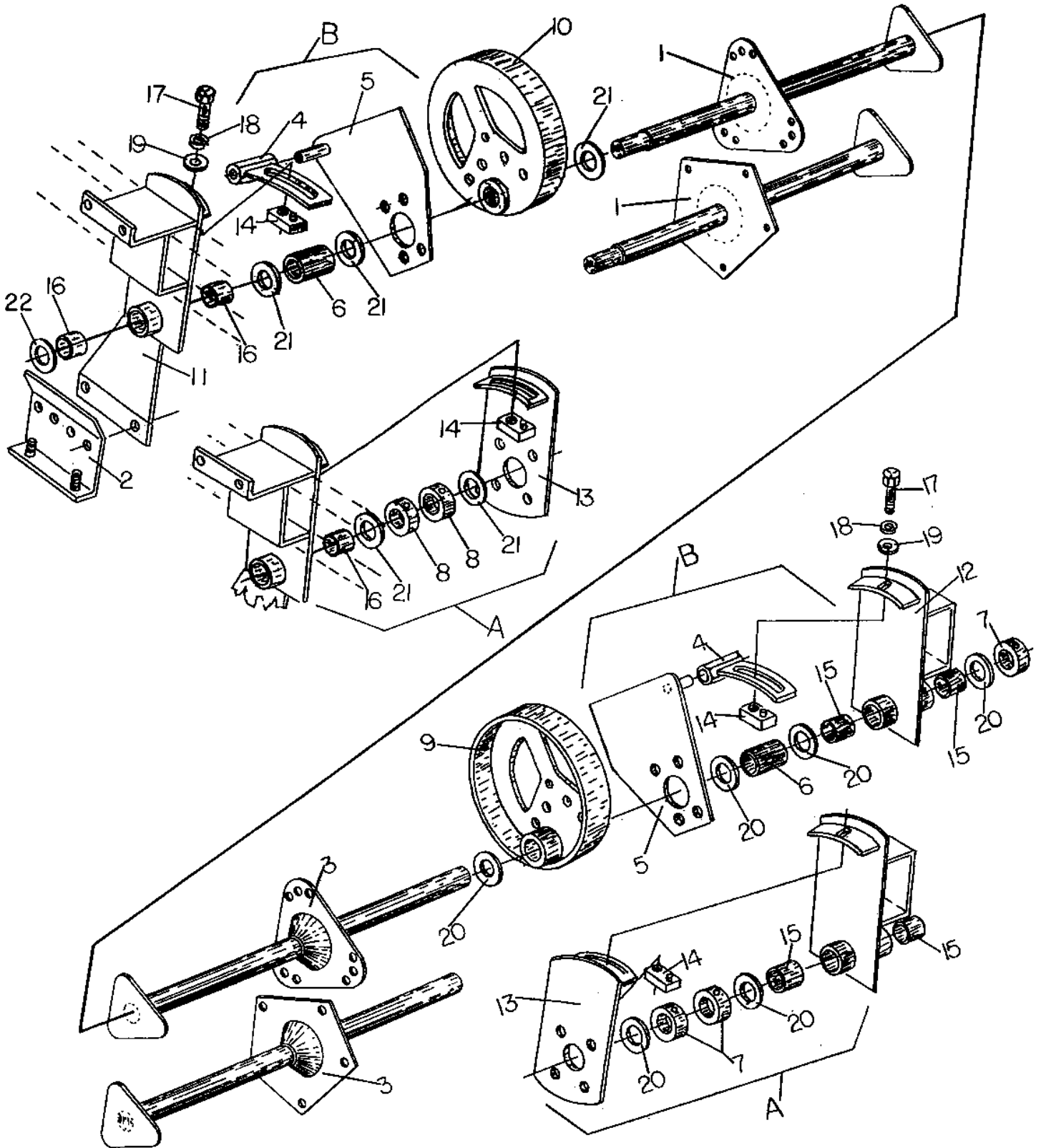
**SPECIFIC MODEL
DRIVE AND ATTACHING PARTS**

**IHC 810 AND 820 HEADERS
1979 & LATER**

**5 BAT KITS
DA9533
DA9772**

**6 BAT KITS
DA9511
DA9755**

SPECIFIC MODEL DRIVE AND ATTACHING PARTS
CASE/H 810 & 820 HEADERS (1979 & LATER)
5 BAT - DA9533 & DA9772
6 BAT - DA9511 & DA9755



**SPECIFIC MODEL DRIVE AND ATTACHING PARTS
CASE/IH 810 & 820 HEADERS (1979 & LATER)**

5 BAT - DA9533 & DA9772

6 BAT - DA9511 & DA9755

KEY	PART NO.	DESCRIPTION
1	J525	SHAFT, DRIVE END 5 BAT - 8" DIA. CENTER TUBE
	J513	SHAFT, DRIVE END 6 BAT - 10" DIA. CENTER TUBE
	H422	SHAFT, DRIVE END 6 BAT - 8" DIA. CENTER TUBE
	HH451	SHAFT, DRIVE END 6 BAT - 10" DIA. CENTER TUBE
2	H423	BRACKET, SHIELD
3	J508	SHAFT, ECCENTRIC END 5 BAT - 8" DIA. CENTER TUBE
	J515	SHAFT, ECCENTRIC END 5 BAT - 10" DIA. CENTER TUBE
	H60210	SHAFT, ECCENTRIC END 6 BAT - 8" DIA. CENTER TUBE
	H471	SHAFT, ECCENTRIC END 6 BAT - 10" DIA. CENTER TUBE
4	H482	ARM, PITCH CONTROL
5	H483	PLATE, PITCH CONTROL
6	H452	SPACER, 1.69 BORE X 1.63" - 6" CENTER DRIVE
	H453	SPACER, 1.50 BORE X 2.38" - 8" & 10" CENTER DRIVE
	H454	SPACER, 1.69 BORE X 2.38" - 8" & 10" CENTER DRIVE
7	H3302	SET COLLAR, 1-1/2" I.D.
8	H3363	SET COLLAR 1-11/16 I.D.
	H3399	SET COLLAR, 1-9/16" I.D.
9	H7035	ECCENTRIC, 1-1/2"
10	H7028	ECCENTRIC, 1-11/16"
	H7061	ECCENTRIC, 1-9/16"
11	HH455	REEL SUPPORT ASSEMBLY, RH
12	HH456	REEL SUPPORT ASSEMBLY, LH 1-1/2"
	HH457	REEL SUPPORT ASSEMBLY, LH 1-5/16"
13	HH458	PLATE, PITCH CONTROL
14	HH459	LOCK BLOCK
15	HH1505	BUSHING - 1-1/2" (INCLUDED IN HH456)
16	HH1506	BUSHING 1-9/16" (INCLUDED IN HH455)
17	X2A0500150	CAPSCREW, 1/2-13 UNC X 1-1/2"
18	X3B050	LOCKWASHER 1/2"
19	X3C050	FLATWASHER 1/2"
20	X3D22515-2	MACHINERY BUSHING, 1-1/2" I.D.
21	X3D25017-2	MACHINERY BUSHING, 1-3/4" I.D.
22	X3D237016-2	MACHINERY BUSHING, 1-5/8" I.D.