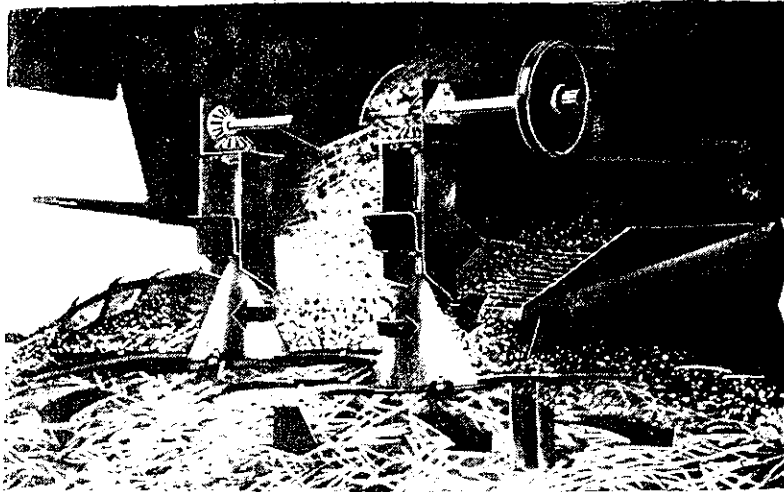


F.O.B.

J.E. LOVE CO.

GARFIELD, WASHINGTON 99130-0188
(509) 635-1321
FAX: (509) 635-1434

STRAW BOSS



RESIDUE MANAGEMENT SYSTEM FOR CASE - IH AXIAL-FLOW COMBINES

STRAW BOSS PROVIDES:

- 1) LARGER DIAMETER SPREADING PLATTERS
- 2) CHAFF CONVEYING PAN
- 3) EXTENDED SPREADER SUPPORTS AND SHAFTS
- 4) FASTER PLATTER ROTATION SPEED*

		SHIPPING WEIGHT***
G460	-STRAW BOSS for CASE-IH 1440, 1460, 1640, 1660	195#
G460W	-STRAW BOSS for CASE-IH 1440, 1460, 1640, 1660 (WIDE SPREAD)	195#
G461	-STRAW BOSS for CASE-IH 1466, 1666 WITH EXTENDED SIEVES	
G461W	-STRAW BOSS for CASE-IH 1466, 1666 (WIDE SPREAD) WI/EXTENDED SIEVES	
G470	-STRAW BOSS for CASE-IH 1470	195#
G480	-STRAW BOSS for CASE-IH 1480, 1482, 1680, 1682	235#
G481	-STRAW BOSS for CASE-IH 1680, 1682 with EXTENDED SIEVES	190#
G14042	-DRIVE BELT KIT 1449 & 1460 WITH OLD STYLE SPREADER DRIVE**	5#
G14094	-KIT, CONVERSION - G480 TO G481	300#
G14095	-KIT, COMMON PARTS - G480 & G481	798#
G14104	-KIT, CONVERSION - G481 TO G480	714#
G14105	-KIT, CONVERSION - G460 TO G461 (SAME AS G14094 EXCEPT FOR 1466, 1666)	300#

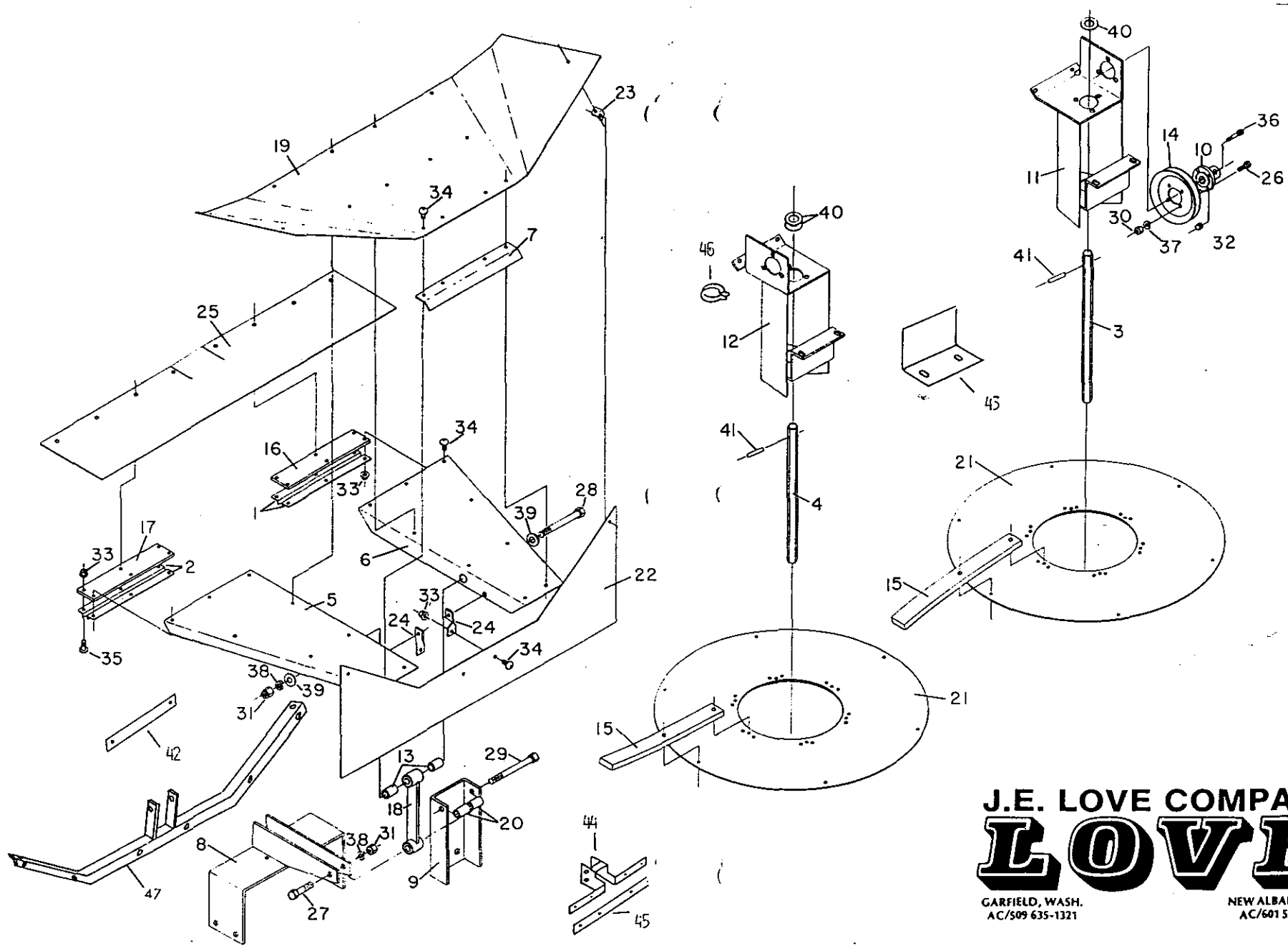
NOTES:

- * Models G460W, G470 and G480 have platter rotation speed that is 50% faster than the original equipment.
- ** The G460 has a rotation speed that is 17% slower than the other Straw Boss models. This slower speed reduces the width of spread, which may be more desirable in some crop conditions.

Older 1440, and 1460 combines with the spreaders driven from the rotor discharge beater shaft require a G14042 drive belt, which must be ordered separately. Only the G460W should be ordered for these combines with the old style spreader drives. The G460 will NOT work on these combines
- *** Straw Boss shipping weights listed include a 30 pound pallet, utilized on shipments of 1 to 5 G460, G460W & G470 models and on shipments of 1 to 4 G480 models. For example, a pallet with the maximum of 5-G460 models would weight 855 pounds, while a pallet with the maximum of 4-G480 models would weigh 850 pounds.

INTEGRATES CHAFF SPREADING WITH INCREASED STRAW DISPERSION

ORDER BY COMBINE MAKE AND MODEL.



J.E. LOVE COMPANY
LOVE

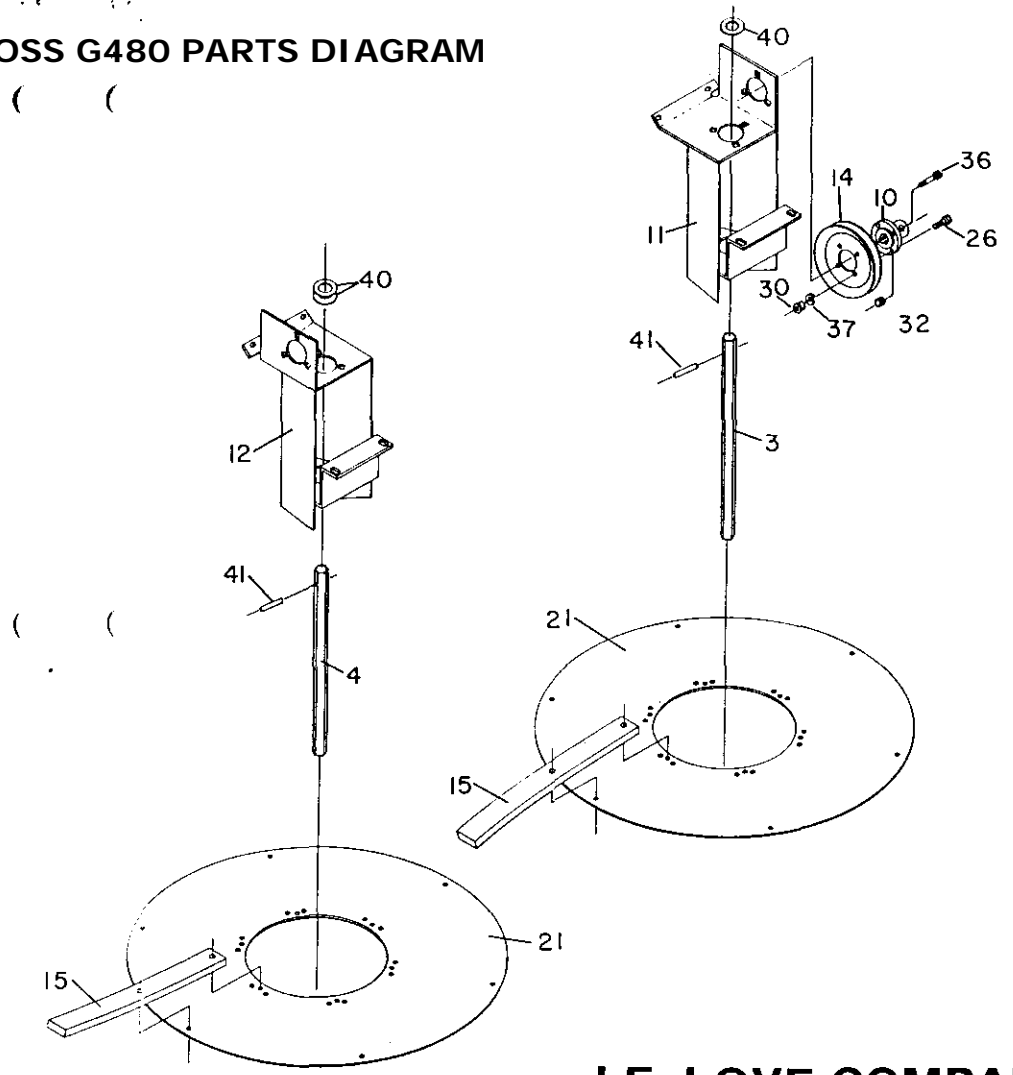
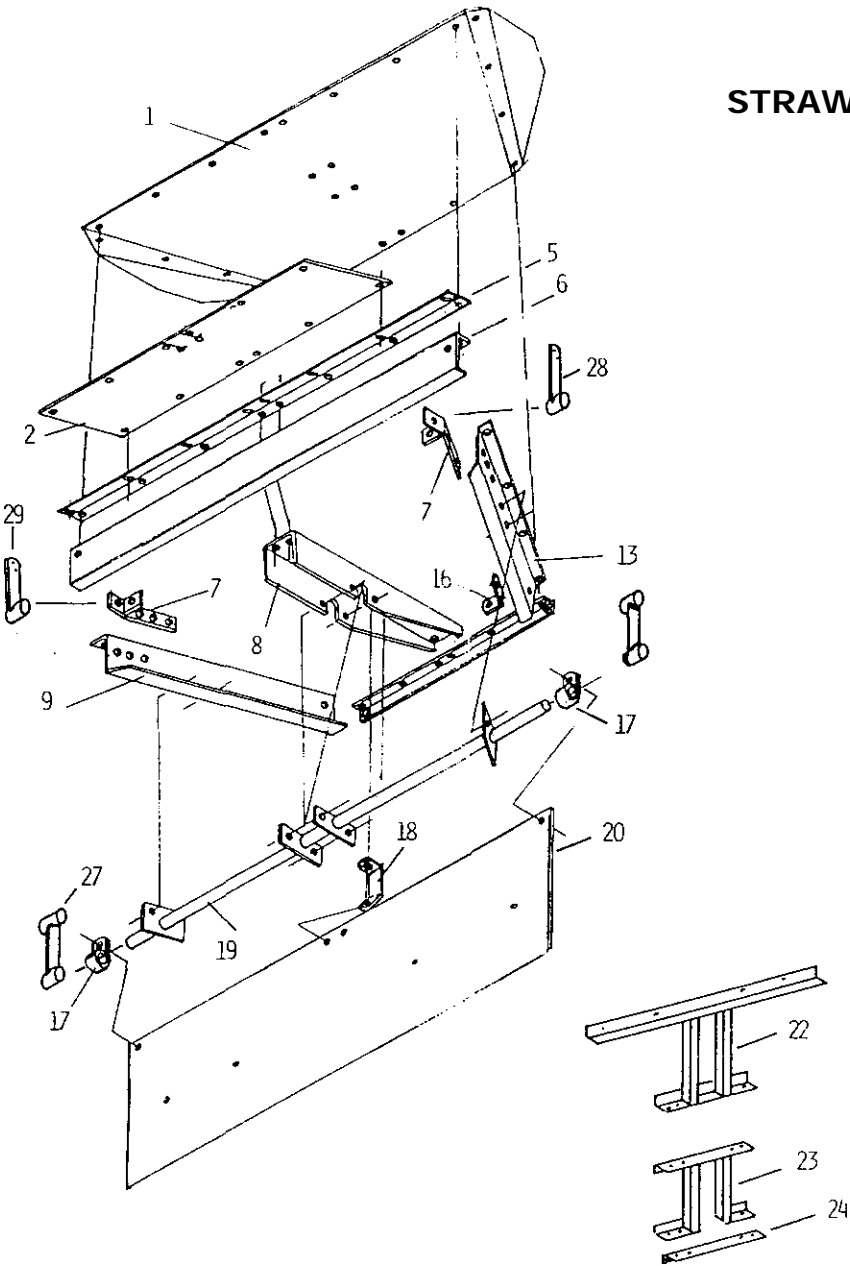
GARFIELD, WASH.
 AC/509 635-1321

NEW ALBANY, MISS.
 AC/601 534-9541

G460, G460W AND G470
PARTS LISTING

KEY	PART NO.	DESCRIPTION	QTY
1	G14001	RIGHT HAND FACING STRAP	2
2	G14002	LEFT HAND FACING STRAP	2
3	G14003	SPREADER SHAFT, LONG	1
4	G14004	SPREADER SHAFT, SHORT	1
5	G14005	SUPPORT FRAME, LEFT HAND	1
6	G14006	SUPPORT FRAME, RIGHT HAND	1
7	G14007	REAR BRACE	1
8	G14008	CONVEYOR LOWER MOUNT (G460 & G460W ONLY)	1
9	G14011	CONVEYOR LOWER MOUNT (G470 ONLY)	1
10	G14018	HUB	1
11	G14019	BEARING CAGE	1
12	G14020	BEARING CAGE	1
13	G14021	UPPER SPACER	2
14	G14022	7.25-B SHEAVE (G460W & G470)	1
	G14048	8.00-B SHEAVE (G460 ONLY)	1
15	G14023	PADDLE	12
16	G14024	RIGHT HAND MOUNTING STRIP	1
17	G14025	LEFT HAND MOUNTING STRIP	1
18	G14027	SHAKER ARM ASSEMBLY	1
19	G14028	TOP PAN ASSEMBLY	1
20	G14030	LOWER SPACER (G470 ONLY)	2
21	G14032	SPREADER PLATE	2
22	G14033	KICKBACK FLAP (G470)	1
	G14050	KICKBACK FLAP (G460 & G460W)	1
23	G14034	END HANGER, REPLACED BY G14088	2
24	G14035	CENTER HANGER, REPLACED BY G14088	2
25	G14036	EXTENSION FLAP (G460 & G460W)	1
26		5/16-18 UNC X 1 CAP SCREW	4
27		5/8-11 X 3-1/2 CAP SCREW (G460W)	1
28		5/8-11 UNC X 5-1/2 CAP SCREW	1
29		5/8-11 X 6 CAP SCREW (G470 ONLY)	1
30		5/16-18 UNC HEX NUTS	4
31		5/8-11 UNC HEX NUTS	2
32		5/16-18 UNC NO FLANGE TOP LOCK NUT	1
33		5/16-18 UNC WHIZ LOCK SMALL FLANGE NUT	32
34		5/16-18 UNC X 3/4 PHILLIPS TRUSS HEAD CAP SCREW	26
35		5/16-18 UNC X 1 SLOTTED TRUSS HEAD WHIZ LOCK CAP SCREW	6
36		5/16-18 UNC X 1-3/4 SOCKET HEAD SCREW	1
37		5/16 LOCK WASHER	4
38		5/8 LOCK WASHER	2
39		5/8 FLAT WASHER	2
40		2-1/16 OD X 1-1/16 X 18 GA MACHINERY BUSH.	6
41		1/4 DIA X 2 SPRING PIN	2
42	G14045	BRACE, REPLACED BY G14088	2
43	G14047	DEFLECTOR	1
44	G14080	BAR ASSEMBLY	1
45	G14079	CLAMP	1
46	G14081	CLAMP (USED ON 1640 & 1660 ONLY)	2
47	G14088	BRACE, FLAP MOUNTING	1

STRAW BOSS G480 PARTS DIAGRAM



J.E. LOVE COMPANY
LOVE

GARFIELD, WASH.
AC/509 635-1321

G480
PARTS LISTING

KEY	PART NO.	DESCRIPTION	QTY
1	G14054	PAN	1
2	G14061	EXTENSION	1
3	G14003	SPREADER SHAFT, LONG	1
4	G14004	SPREADER SHAFT, SHORT	1
5	G14062	EXTENSION STRIP	1
6	G14059	FRONT BEAM	1
7	G14068	SUPPORT ARM	2
8	G14057	SUPPORT CHANNEL	1
9	G14056	RAIL, R.H.	1
10	G14018	HUB	1
11	G14019	BEARING CAGE	1
12	G14020	BEARING CAGE	1
13	G14055	RAIL, L.H.	1
14	G14022	7.25 B SHEAVE	1
15	G14052	PADDLE	12
16	G14063	CORNER TIE	2
17	G14073	TUBE CLAMP	2
18	G14060	CENTER FLAP SUPPORT	2
19	G14064	SUPPORT ROD	1
20	G14074	KICKBACK FLAP	1
21	G14051	SPREADER PLATE	2
22	G14082	BRACKET, FLAP	1
23	G14086	STAND BRACKET (NOT USED W/POWER ASSIST AXLE)	1
24	G14083	CLAMP	1
26		5/16-18 UNC X 1 CAP SCREW	4
27	G14069	REAR SUPPORT ASSY.	2
28	G14070	SHOE BRACE, L.H.	1
29	G14071	SHOE BRACE, R.H.	1
30		5/16-18 HEX NUT	4
32		5/16-18 UNC NO FLANGE TOP LOCK NUT	1
36		5/16-18 UNC X 1-3/4 SOCKET HEAD SCREW	1
37		5/16 LOCK WASHER	4
40		2-1/16 O.D. X 1-1/16 GA BUSHING	6
41		1/4 DIA X 2 SPRING PIN	2
43	G14047	DEFLECTOR	1
46	G14081	CLAMP (USED ON 1680 ONLY)	2

NOT SHOWN:

G14084	L.H. CORNER	1
G14085	R.H. CORNER	1
G14047	DEFLECTOR	1