

Calkins

CHISEL PLOW

3 SECTION 37 FT.

Parts Manual

J.E. LOVE COMPANY

LOVE®

309 W. CALIFORNIA STREET
P.O. BOX 188
GARFIELD, WASHINGTON 99130-0188
(509) 635-1321 FAX: (509) 635-1434
www.jeloveco.com

CAUTION

BLOCK SECURELY

Do not place yourself under any equipment suspended hydraulically, with mechanical stops, jacks or hoists, without blocking securely.

Make sure machine cannot roll.

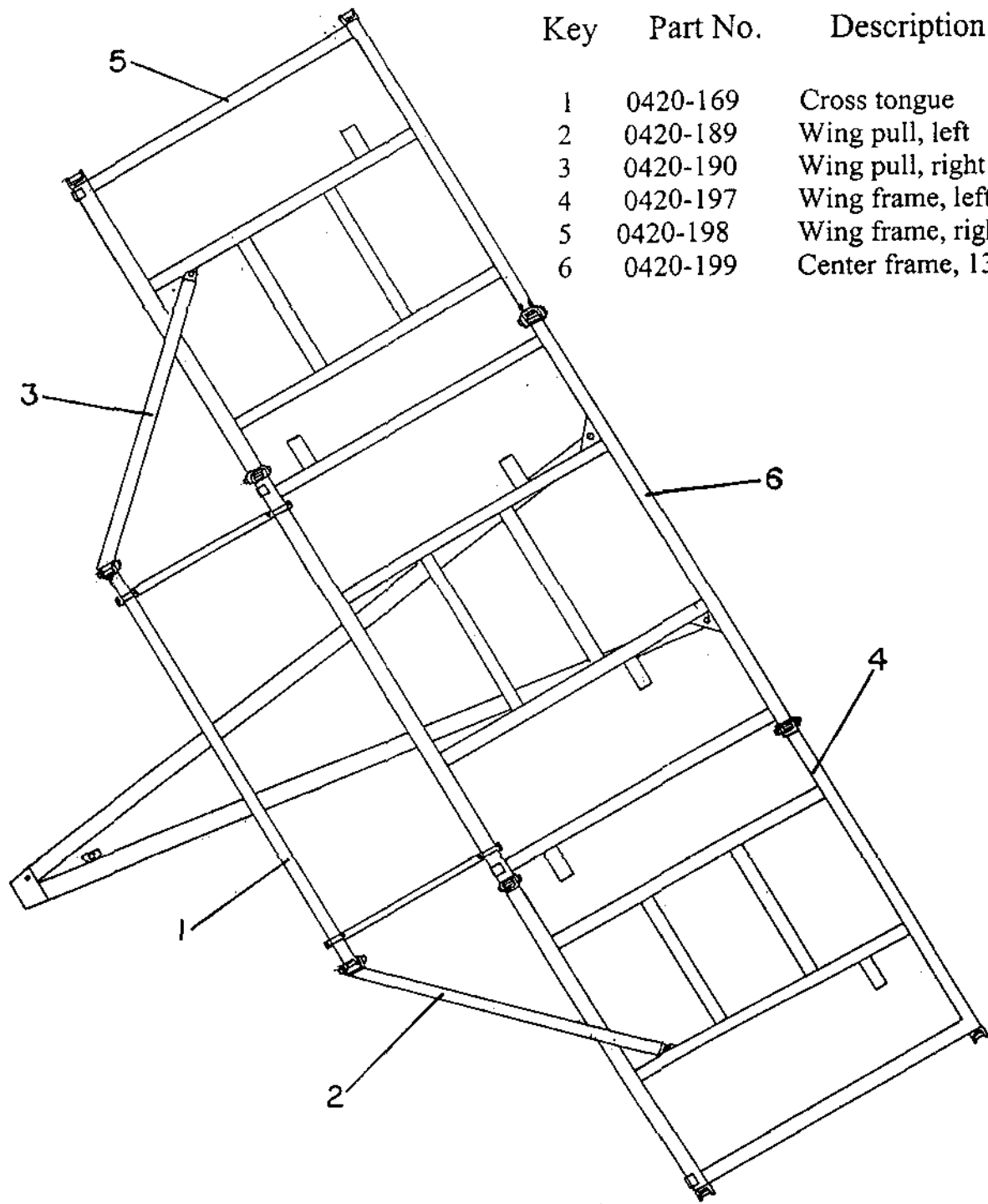
Table of contents

Title	Page
Caution/warning	-
Table of contents -----	1,2
Frame layout -----	3
Center frame-----	4,5
Tongue	
Cross tongue	
Wing frame, left -----	6,7
Wing pull, left	
Wing frame, right -----	8,9
Wing pull, right	
Depth/caster wheel leg assembly, left wing -----	10,11
Depth/caster wheel leg assembly, right wing -----	12,13
Tandem wheel leg assembly, Center frame, 8 bolt hub -----	14,15
Tandem wheel legs -----	16,17
Walking beam	
8 Bolt hubs and Spindles	
Tandem wheel leg assemblies, Wing frames, 6 bolt hubs -----	18,19
Tandem wheel legs -----	20,21
Walking beam	
6 Bolt hubs and Spindles	
Depth stop kits -----	22,23
Tandem wheel legs	
Adjustable linkage	
Adjustable linkage assembly -----	24,25
Hydraulic cylinders	
Cylinder locks	
Main lift system hydraulic components -----	26,27
Wing lift components, Center frame -----	28,29
Hydraulic components -----	30,31
Wing lift, Center frame	
Wing lift components, left wing -----	32,33
Wing lift components, right wing -----	34,35

Table of contents

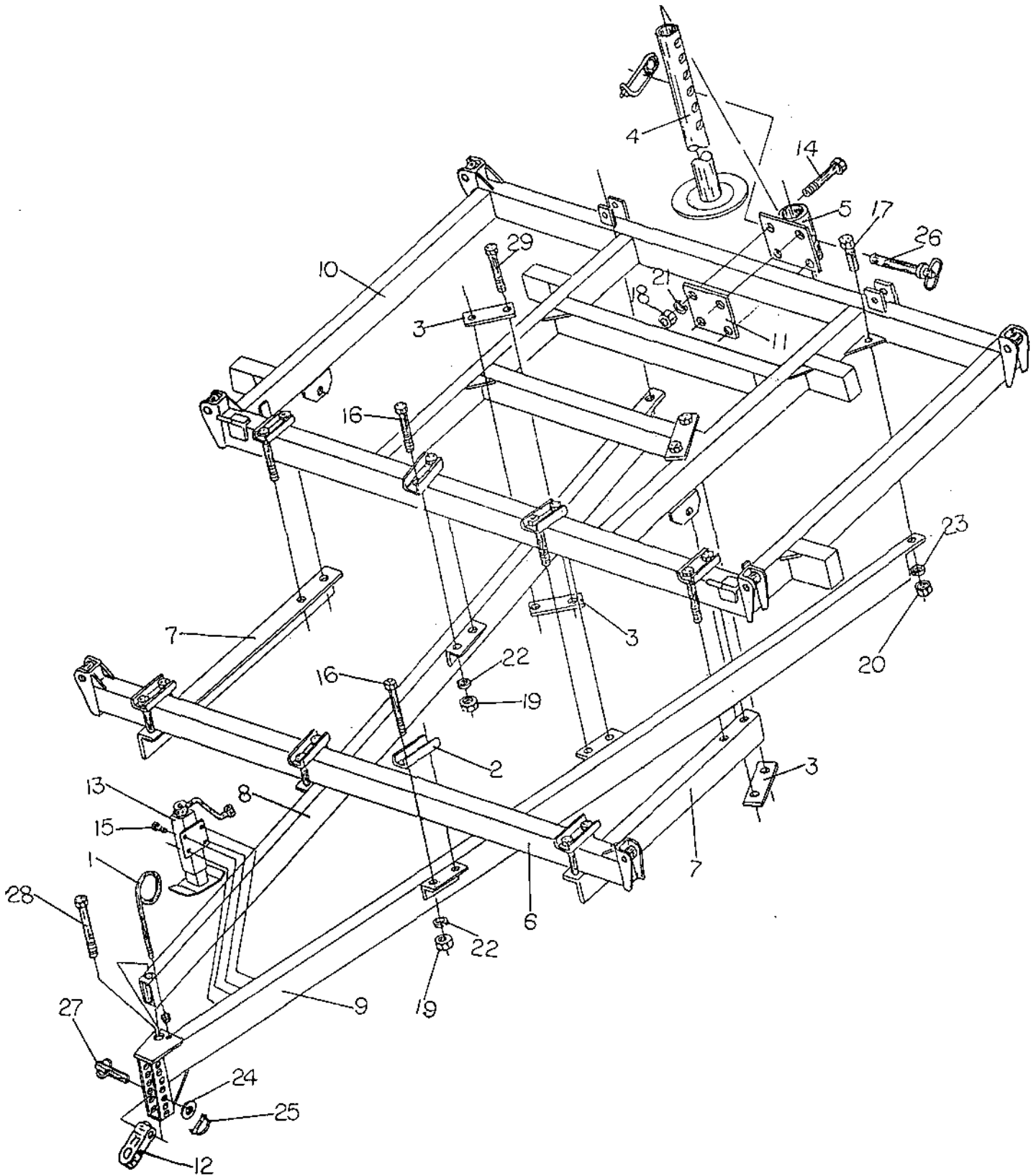
Title	Page
Center frame transport latch -----	36,37
Shank layout -----	38,39
Forward shank mount -----	40,41
Stiff shank assembly -----	42,43
Spring shank assembly -----	44,45
Part number page reference section -----	A-1, A-7

Frame Layout



Key	Part No.	Description
1	0420-169	Cross tongue
2	0420-189	Wing pull, left
3	0420-190	Wing pull, right
4	0420-197	Wing frame, left, 12 ft.
5	0420-198	Wing frame, right, 12 ft.
6	0420-199	Center frame, 13 ft.

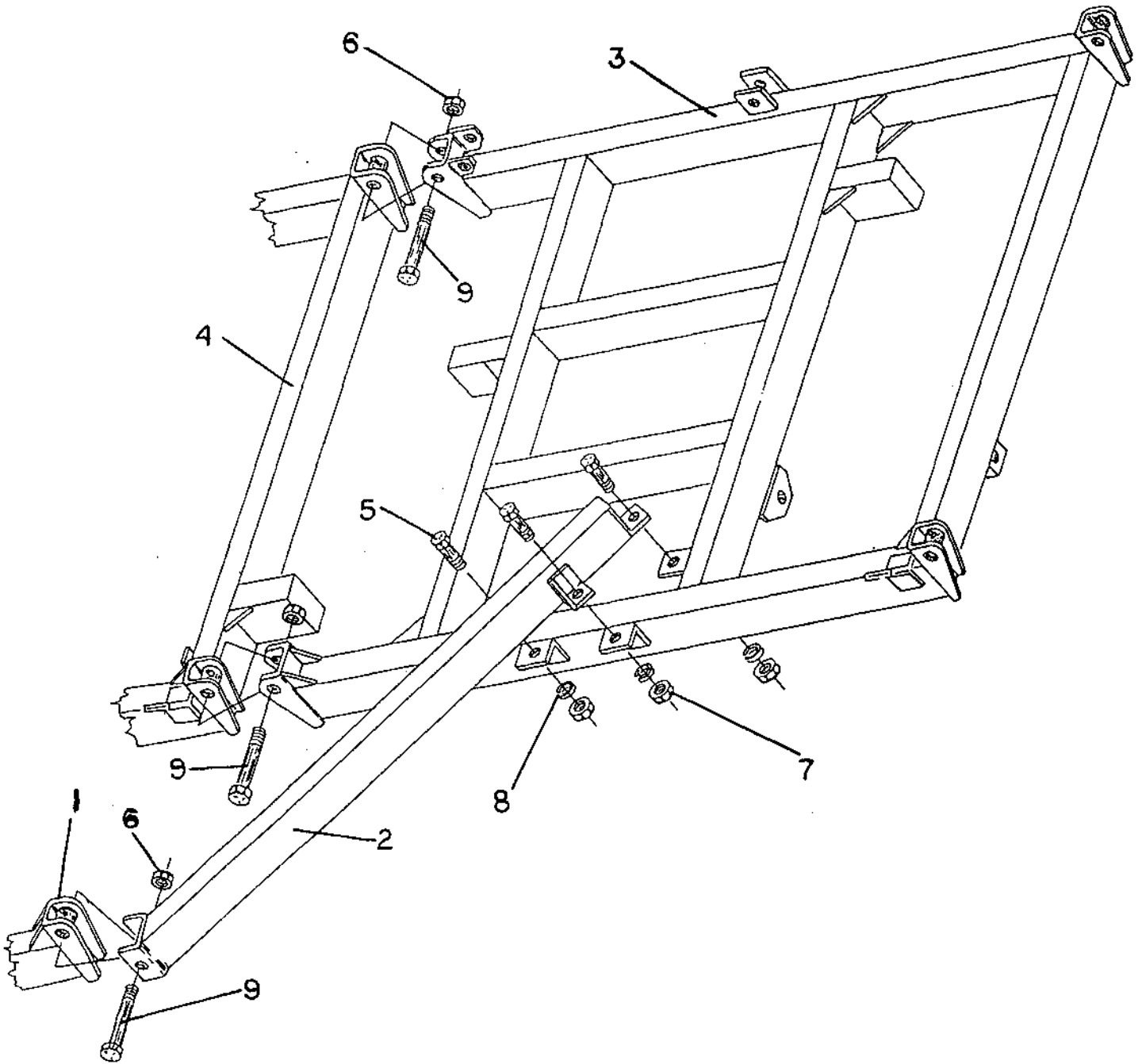
Center frame, Tongue and Cross tongue



Center frame, Tongue and Cross tongue

Key	Part No.	Description
1	0101-037	Hydraulic hose mast assembly
	0106-211	Hydraulic hose mast
	7723-015	Hex nut, ½"NC
	7843-015	Lock washer, ½"
2	0206-031	Clamp plate, 4" span-¾" bolts
3	0403-296	Tongue brace plate
4	0420-102	Rear stand
5	0420-103	Rear stand adjustment bracket
6	0420-169	Cross tongue
7	0420-177	Cross tongue brace
8	0420-185	Tongue, right side
9	0420-186	Tongue, left side
10	0420-199	Center frame, 13 ft.
11	0420-936	Mounting plate
12	5919-900	Tongue flapper, cast
13	6329-055	Tongue jack
14	7114-055	Cap screw, 5/8"NC x 5 ½"
15	7114-109	Cap screw, 5/8"NC x 2"
16	7115-080	Cap screw, ¾"NC x 8"
17	7116-030	Cap screw, 1"NC x 3"
18	7724-005	Hex nut, 5/8"NC
19	7725-002	Hex nut, ¾"NC
20	7726-005	Hex nut, 1"NC
21	7844-020	Lock washer, 5/8"
22	7845-020	Lock washer, ¾"
23	7846-020	Lock washer, 1"
24	7896-500	Machine bushing, 1 ½" x 10 Ga. NR
25	7920-010	Drive line lock pin
26	7920-012	Hitch pin, ½ x 4" W/Safety pin
27	8036-025	Pin, tongue flapper, 1 ½" x 5 ½"
28	8116-006	Bolt, 1 ¼"NC x 10 ½", W/7717-255 Nylock nut
29	8115-017	Bolt, ¾"NC x 16 ½", W/7717-120 Nylock nut

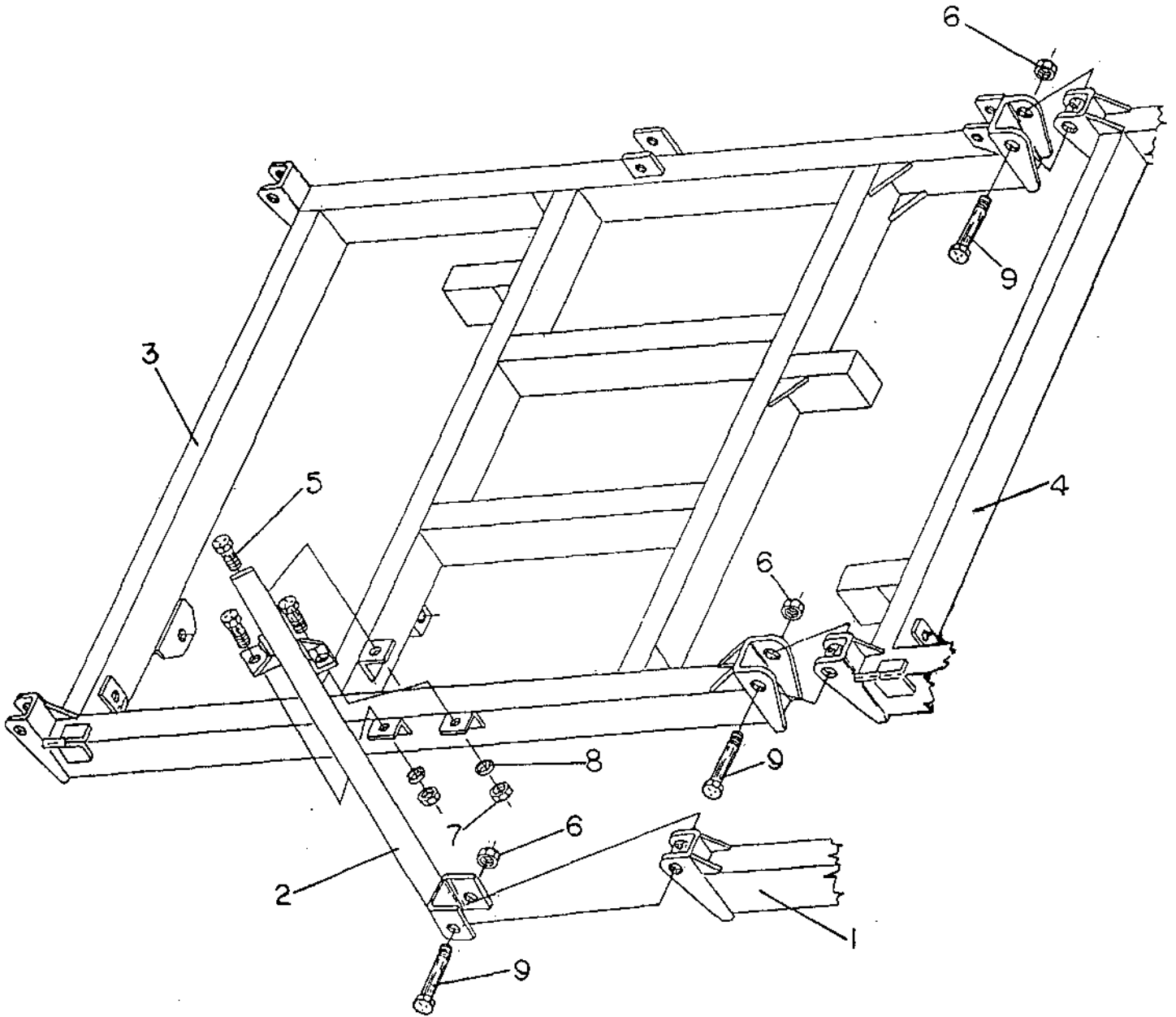
Wing frame and Wing pull, left



Wing frame and Wing pull, left

Key	Part No.	Description
1	0420-169	Cross tongue,
2	0420-189	Wing pull, Left
3	0420-197	Wing frame, left, 12 ft.
4	0420-199	Center frame, 13 ft.
5	7116-030	Cap screw, 1"NC x 3"
6	7717-255	Hex Nylock nut, 1 1/4"NC
7	7726-005	Hex nut, 1"NC
8	7846-020	Lock washer, 1"
9	8116-032	Bolt, 1 1/4"NC x 7" W/7717-255 Nylock nut

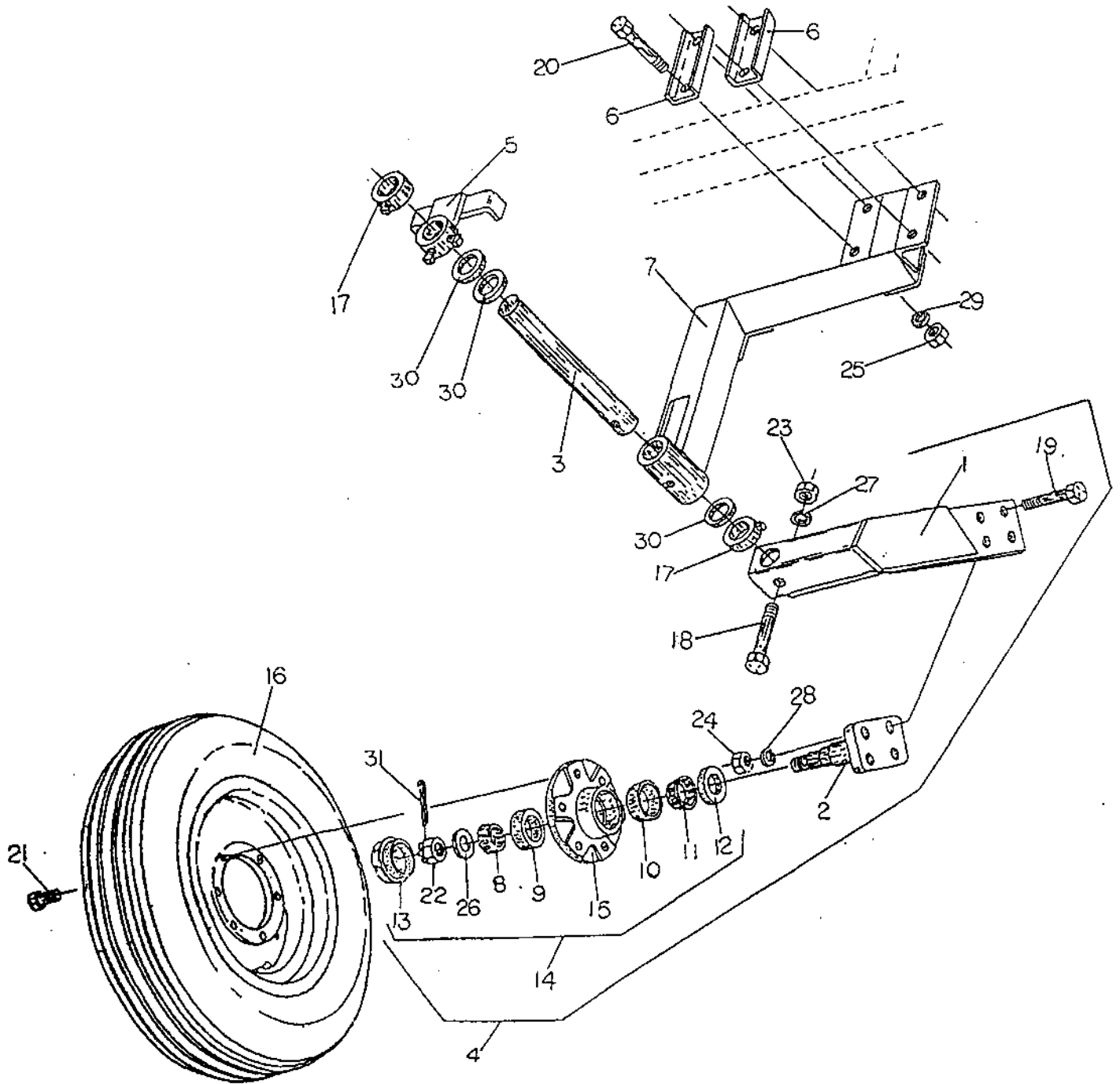
Wing frame and Wing pull, right



Wing frame and Wing pull, right

Key	Part No.	Description
1	0420-169	Cross tongue
2	0420-190	Wing pull, right
3	0420-198	Wing frame, right, 12 ft.
4	0420-199	Center frame, 13 ft.
5	7116-030	Cap screw, 1"NC x 3"
6	7717-255	Hex Nylock nut, 1 1/4"NC
7	7726-005	Hex nut, 1"NC
8	7846-020	Lock washer, 1"
9	8116-032	Bolt, 1 1/4"NC x 7" W/7717-255 Nylock nut

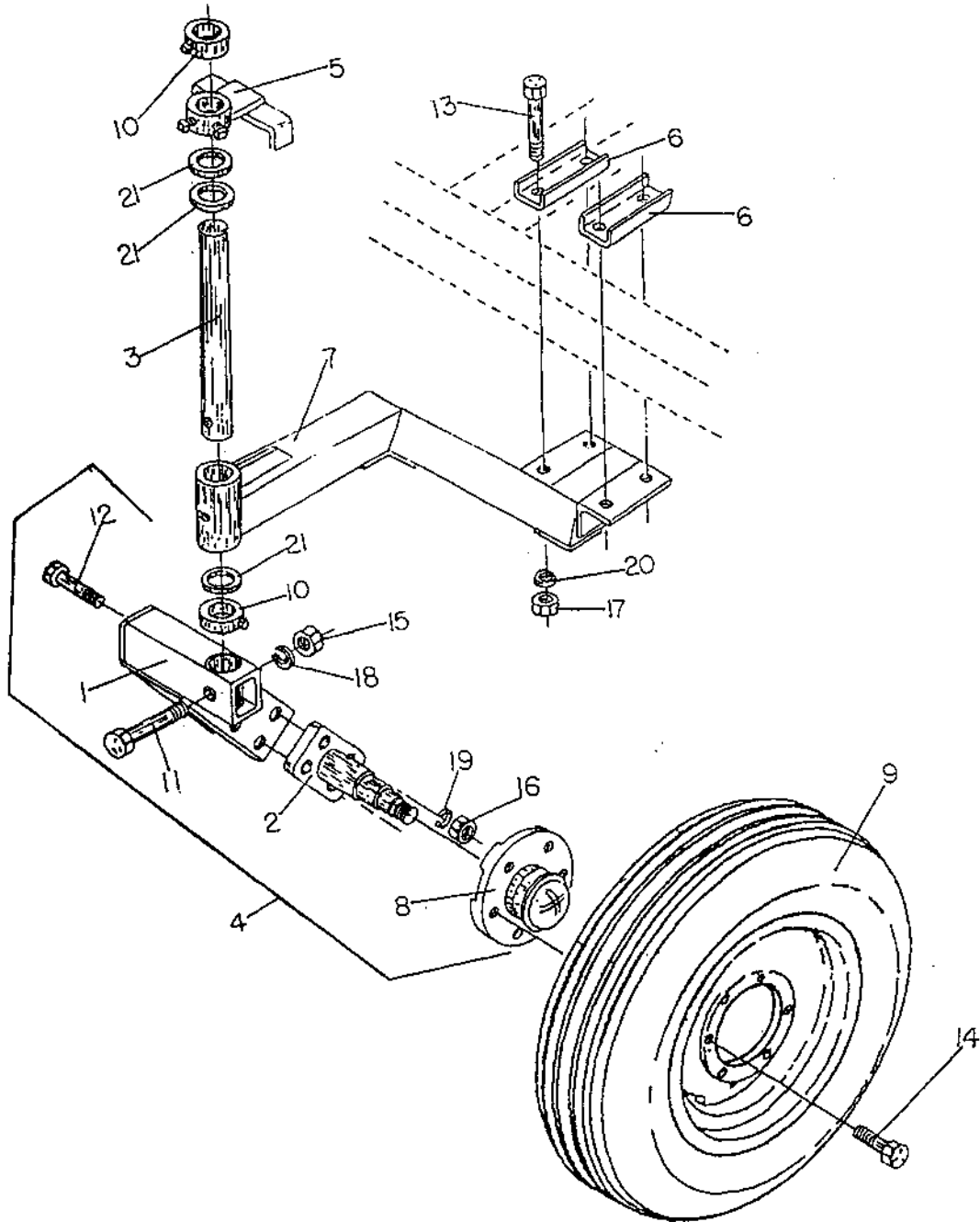
Depth/Caster wheel leg assembly, left Wing



Depth/Caster wheel leg assembly, left wing

Key	Part No.	Description
1	CW9-030	Caster wheel leg, left
2	CW9-034	Spindle platform
3	CW9-045	Shaft, 1-5/8" x 18"
4	CW9-555	Caster wheel leg assembly, left
5	0200-147	Limit plate
6	0206-031	Clamp plate, 4" span, 3/4" bolts, formed
7	0420-110	Depth wheel arm, 32" shank
8	5419-113	Outer bearing
9	5419-118	Outer cup
10	5419-141	Inner cup
11	5419-142	Inner bearing
12	5439-141	Seal
13	5469-006	Dust cap
14	5619-021	Hub assembly, 6-bolt
15	5619-022	Hub, 6-bolt
16	5639-029	Tire & wheel, 7.60 x 15, 8 ply.
	5639-421	Wheel, 15", 6-bolt
	5649-009	Tire, 7.60 x 15, 8 ply rib
17	6487-007	Set collar, 1-11/16"
18	7113-121	Cap screw, 1/2"NC x 3 3/4"
19	7114-030	Cap screw, 5/8"NC x 3 1/2"
20	7115-080	Cap screw, 3/4"NC x 8"
21	7333-006	Lug bolt, 1/2" x 1"
22	7715-875	Slotted nut, 7/8"NF
23	7723-015	Hex nut, 1/2"NC
24	7724-005	Hex nut, 5/8"NC
25	7725-002	Hex nut, 3/4"NC
26	7815-014	Flat washer, 7/8" a-325 Hardened
27	7843-015	Lock washer, 1/2"
28	7844-020	Lock washer, 5/8"
29	7845-020	Lock washer, 3/4"
30	7897-015	Machine bushing, 1-5/8" 10GA. NR
31	7910-162	Cotter pin, 5/32 x 1 1/2"

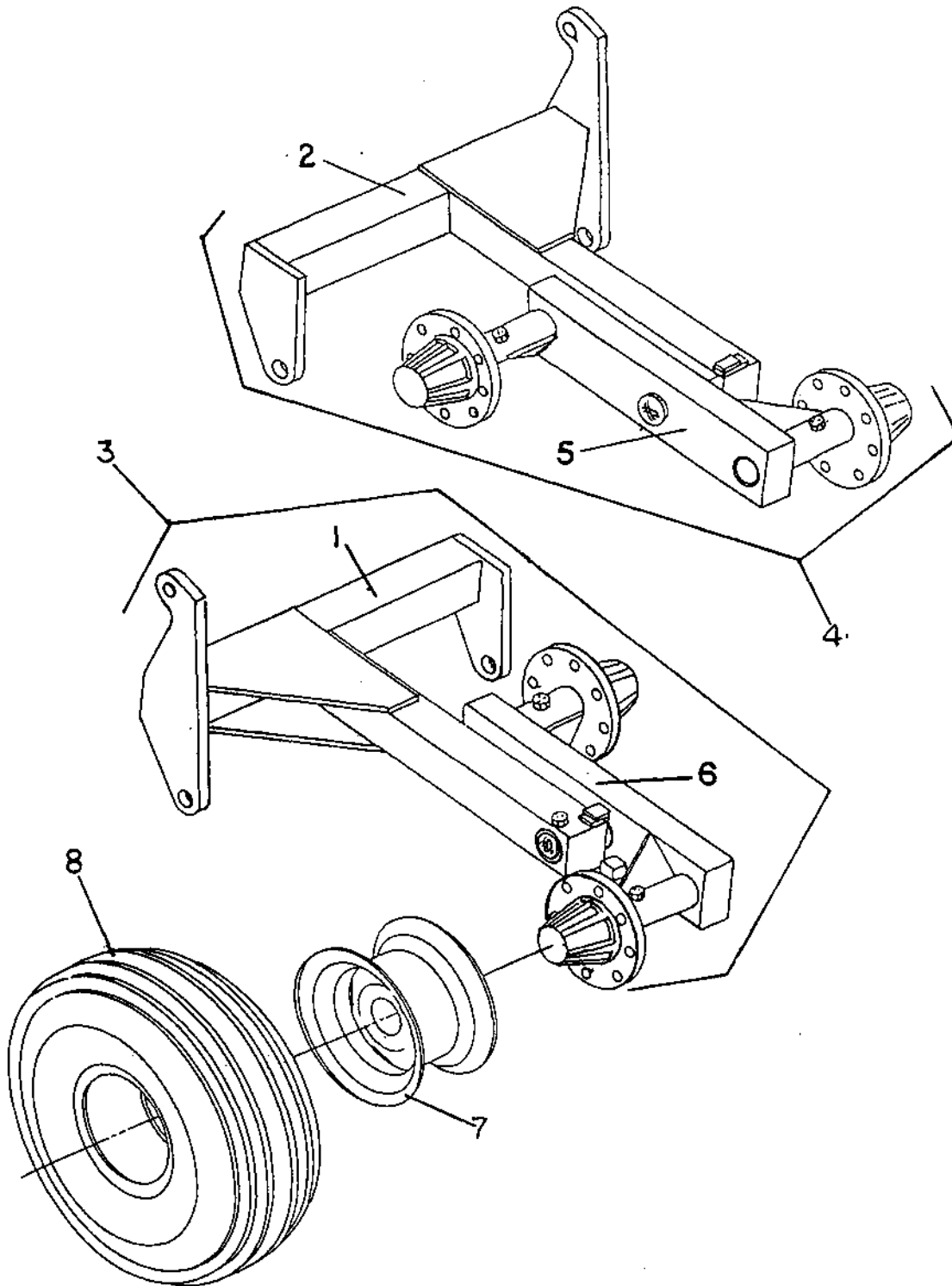
Depth/Caster wheel assembly, right wing



Depth/Caster wheel assembly, right wing

Key	Part No.	Description
1	CW9-031	Caster wheel leg, right
2	CW9-034	Spindle platform
3	CW9-045	Shaft, 1-5/8" x 18"
4	CW9-556	Caster wheel leg assembly, right
5	0200-147	Limit plate
6	0206-031	Clamp plate, 4" span, 3/4" bolts, formed
7	0420-110	Depth wheel arm, 32" shank
8	5619-021	Hub assembly, 6-bolt
9	5639-029	Tire & wheel, 7.60 x 15, 8 ply, rib
10	6487-007	Set collar, 1-11/16"
11	7113-121	Cap screw, 1/2"NC x 3 3/4"
12	7114-030	Cap screw, 5/8"NC x 3 1/2"
13	7115-080	Cap screw, 3/4"NC x 8"
14	7333-006	Lug bolt, 1/2"NF x 1"
15	7723-015	Hex nut, 1/2"NC
16	7724-005	Hex nut, 5/8"NC
17	7725-002	Hex nut, 3/4"NC
18	7843-015	Lock washer, 1/2"
19	7844-020	Lock washer, 5/8"
20	7845-020	Lock washer, 3/4"
21	7897-015	Machine bushing, 1-5/8" 10 GA. NR

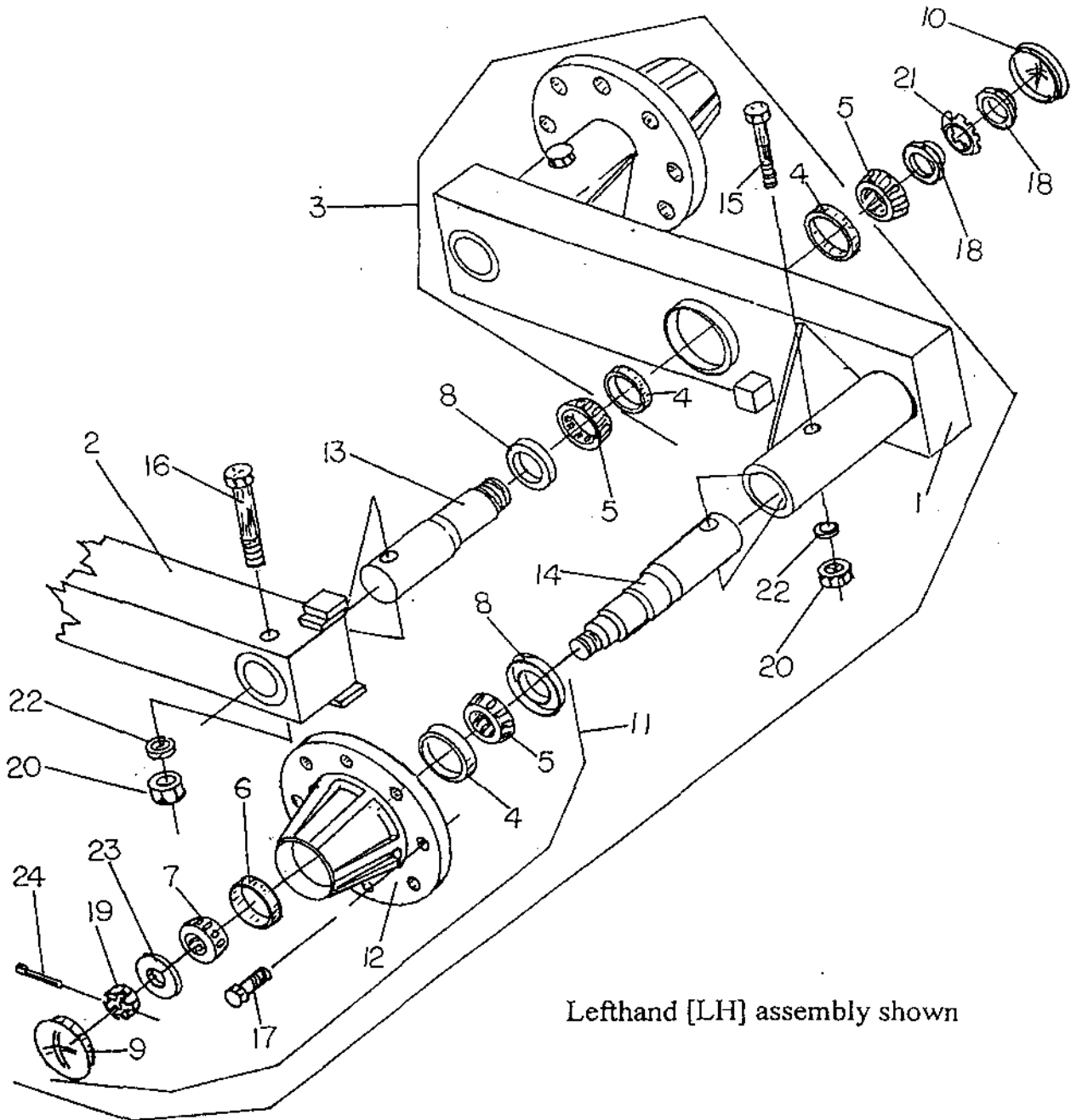
Tandem wheel leg assembly, Center frame
8 Bolt hubs



Tandem wheel leg assembly, Center frame 8 Bolt hubs

Key	Part No.	Description
1	0420-165	Tandem wheel leg, center frame, W/out spindle, left
2	0420-166	Tandem wheel leg, center frame, W/out spindle, right
3	0420-410	Tandem wheel leg assembly, center, left
4	0420-415	Tandem wheel leg assembly, center, right
5	0420-450	Walking beam assembly, center, right
6	0420-455	Walking beam assembly, center, left
7	5639-426	Wheel rim, 15 x 8, 8 bolt
8	5649-062	Tire, 9.5L x 15, 8 ply
	5649-503	Tire, 11L x 15, 8 ply
	5649-035	Tire, 12.5 x 15, 8 ply

Tandem wheel leg, Walking beam, Hub & Spindle 8 bolt hubs

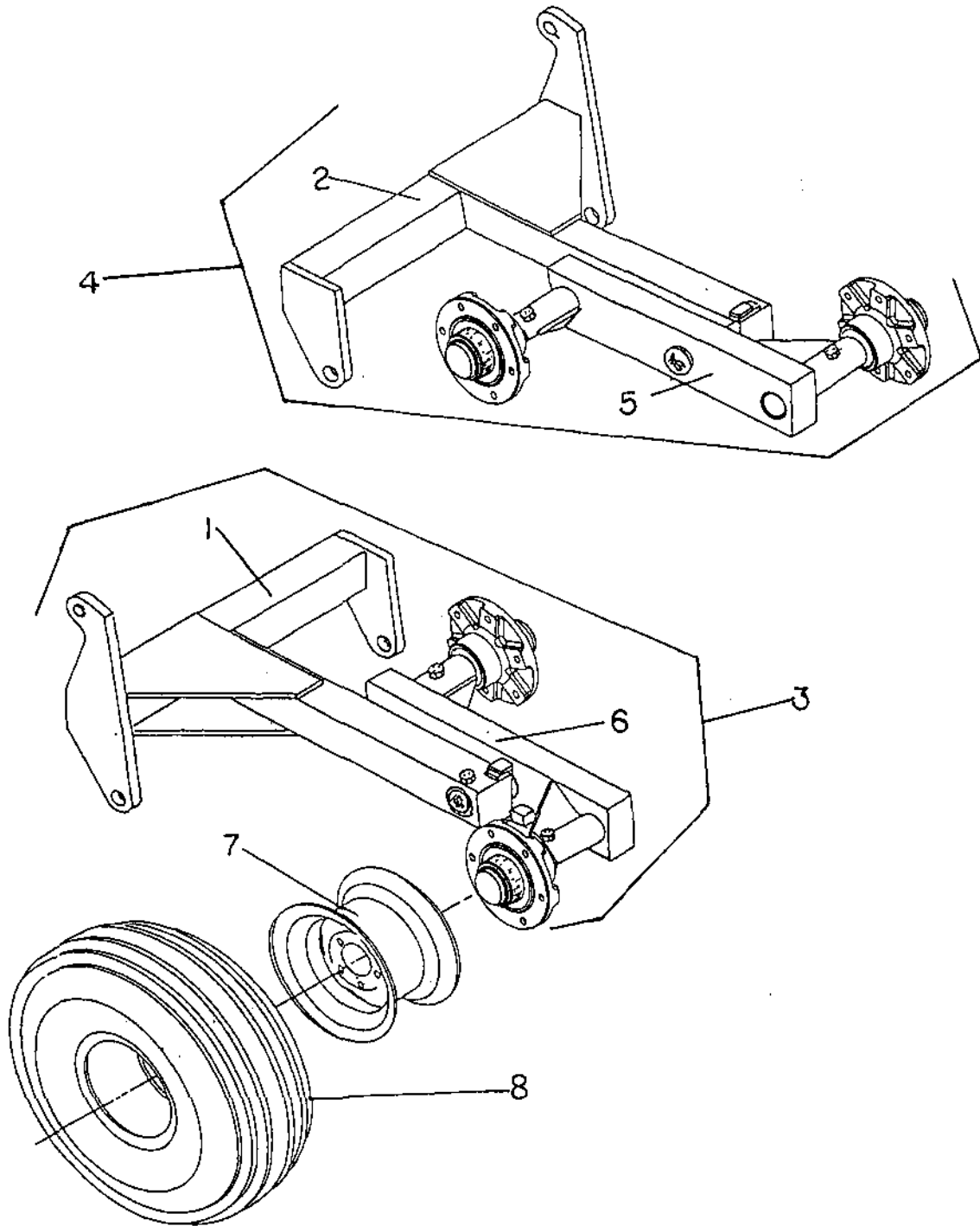


Lefthand [LH] assembly shown

Tandem wheel leg, Walking beam, Hub & Spindle 8 bolt hubs

Key	Part No.	Description
1	0420-055	Walking beam, right, W/ 5419-122 races
	0420-056	Walking beam, left, W/ 5419-122 races
2	0420-165	Tandem wheel leg, left
	0420-166	Tandem wheel leg, right
3	0420-450	Walking beam assembly, right
	0420-455	Walking beam assembly, left
4	5419-122	Race
5	5419-152	Bearing
6	5419-153	Race
7	5419-154	Bearing
8	5439-151	Seal
9	5469-013	Dust cap
10	6469-020	Dust cap
11	5619-025	8 Bolt hub assembly
12	5619-026	8 Bolt hub
13	6628-016	Spindle, wheel leg
14	6628-017	Spindle, walking beam
15	7114-040	Cap screw, 5/8"NC x 4"
16	7114-050	Cap screw, 5/8"NC x 5"
17	7333-009	Lug bolt, 9/16"NF x 1 1/4"
18	7707-001	Lock nut, N-08
19	7715-875	Slotted nut
20	7724-005	Hex nut, 5/8"NC
21	7807-001	Ear washer, W-08
22	7844-020	Lock washer, 5/8"
23	7815-025	Flat washer, 7/8"
24	7910-162	Cotter pin, 5/32" x 1 1/2"

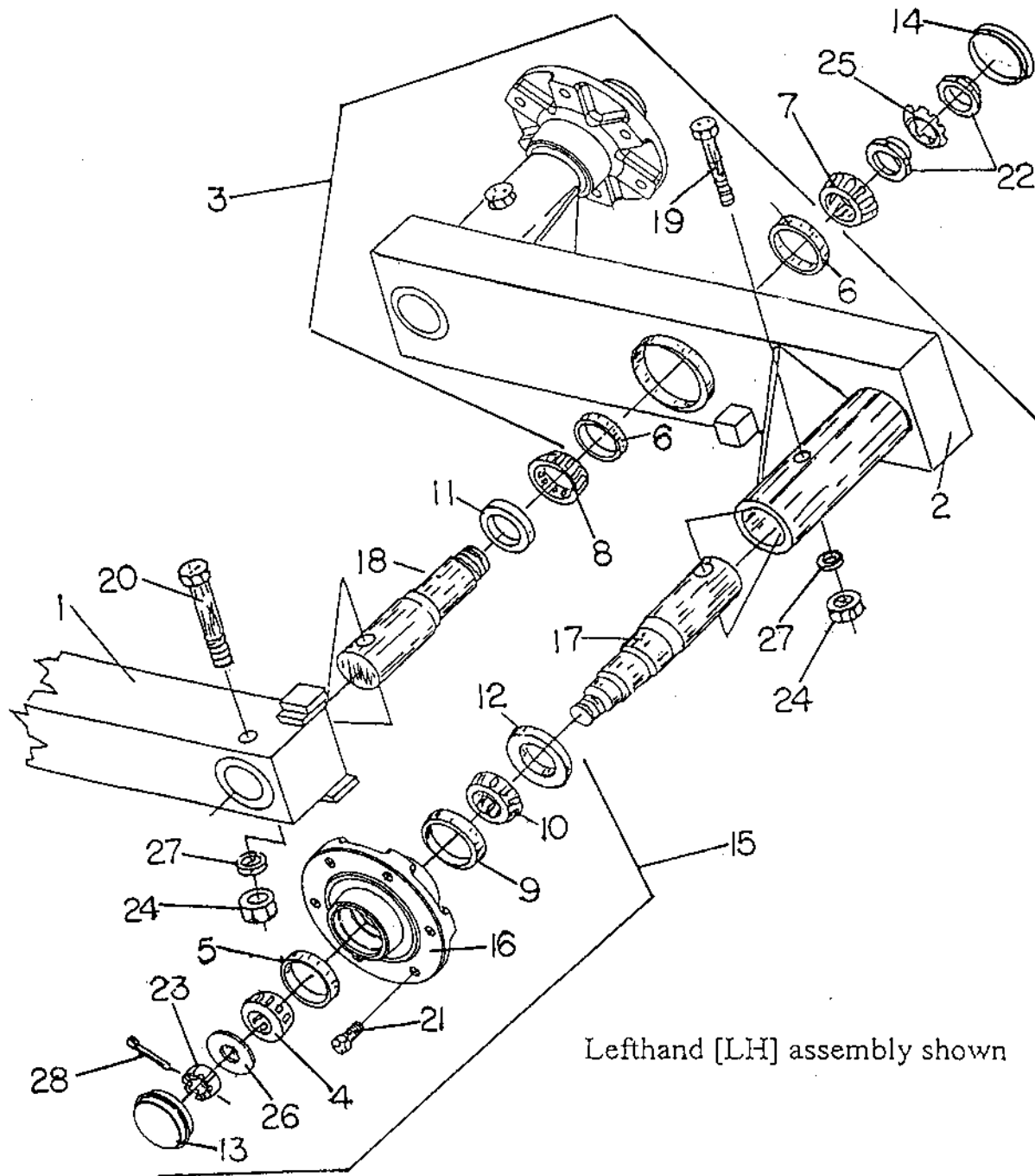
Tandem wheel leg assemblies, Wing frames
6 bolt hubs



Tandem wheel leg assemblies, Wing frames 6 bolt hubs

Key	Part No.	Description
1	0420-045	Tandem wheel leg, wing frame, left
2	0420-046	Tandem wheel leg, wing frame, right
3	0420-330	Tandem wheel leg assembly, 6 bolt, left
4	0420-335	Tandem wheel leg assembly, 6 bolt, right
5	0420-460	Walking beam assembly, 6 bolt, right
6	0420-480	Walking beam assembly, 6 bolt, left
7	5639-421	Wheel rim, 15 x 8, 6 bolt
8	5649-035	Tire, 12.5 x 15, 8 ply
	5649-062	Tire, 9.5L x 15, 8 ply
	5649-503	Tire, 11L x 15, 8 ply

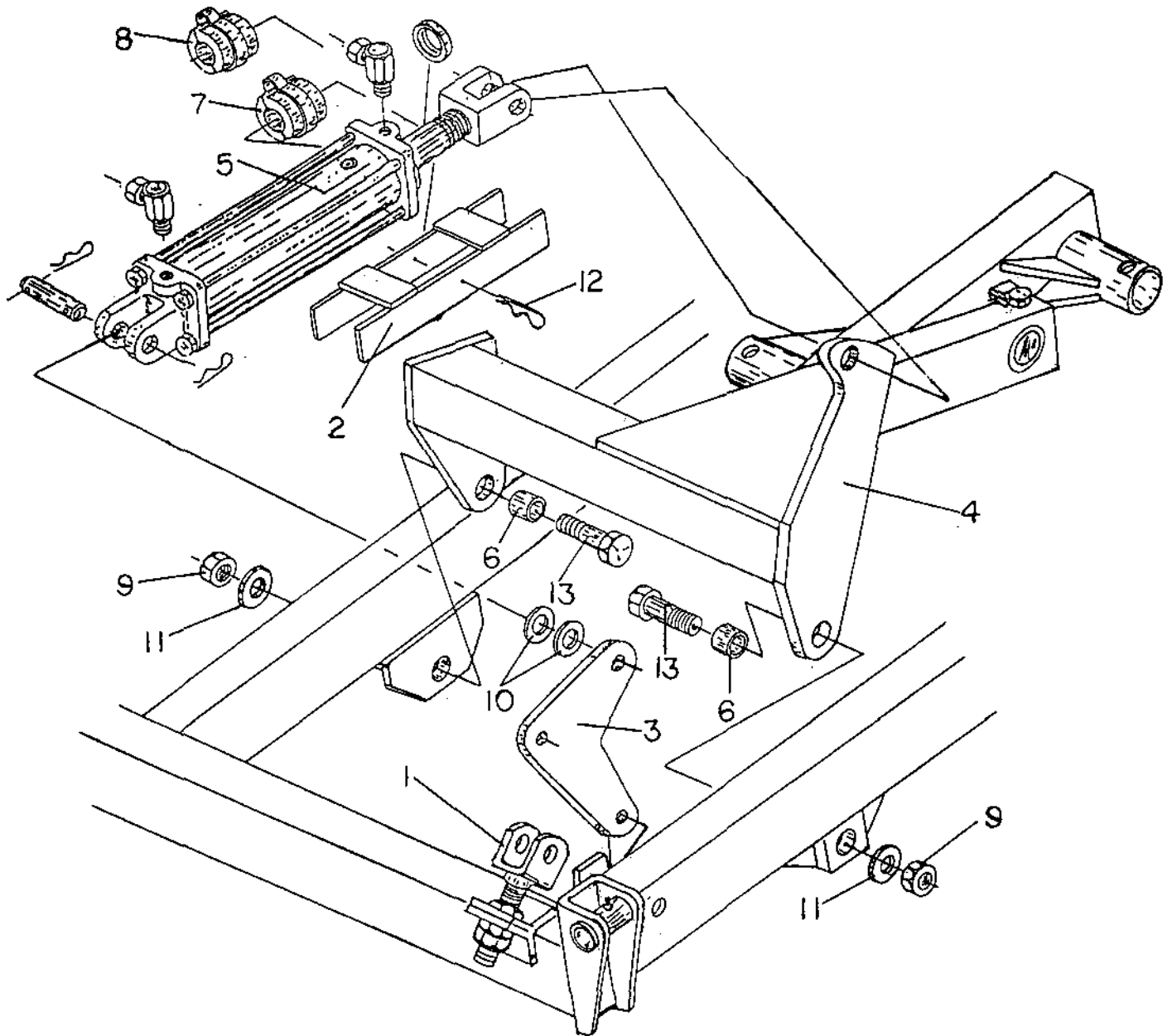
Tandem wheel legs, Walking beams, Hubs & Spindles 6 Bolt Hubs



Tandem wheel legs, Walking beams, Hubs & Spindles 6 Bolt Hubs

Key	Part No.	Description
1	0420-045	Tandem wheel leg, left
	0420-046	Tandem wheel leg, right
2	0420-053	Walking beam, W/5419-125 Cup, left
	0420-054	Walking beam, W/5419-125 Cup, right
3	0420-460	Walking beam assembly, right
	0420-480	Walking beam assembly, left
4	5419-113	Bearing, outer
5	5419-118	Cup, outer
6	5419-125	Cup, bearing race
7	5419-126	Bearing
8	5419-127	Bearing
9	5419-141	Cup, inner
10	5419-142	Bearing cone, inner
11	5439-020	Seal, wheel leg assembly
12	5439-141	Seal, 6 bolt hub
13	5469-006	Hub cap
14	6469-020	Hub cap
15	5619-021	Hub assembly, 6 bolt
16	5619-022	Hub, 6 bolt
17	5629-001	Spindle, 3650, 2-1/8" butt
18	6628-018	Spindle, walking beam
19	7114-040	Cap screw, 5/8"NC x 4"
20	7114-050	Cap screw, 5/8"NC x 5"
21	7333-006	Lug bolt, 1/2"NF x 1"
22	7707-001	Lock nut, N-08
23	7715-875	Slotted nut, 7/8"NF
24	7724-005	Hex nut, 5/8"NC
25	7807-001	Ear washer, W-08
26	7815-014	Flat washer, 7/8" A-325 hardened
27	7844-020	Lock washer, 5/8"
28	7910-162	Cotter pin, 5/32" x 1 1/2"

Depth stop kits, Tandem wheel legs & Adj. linkage

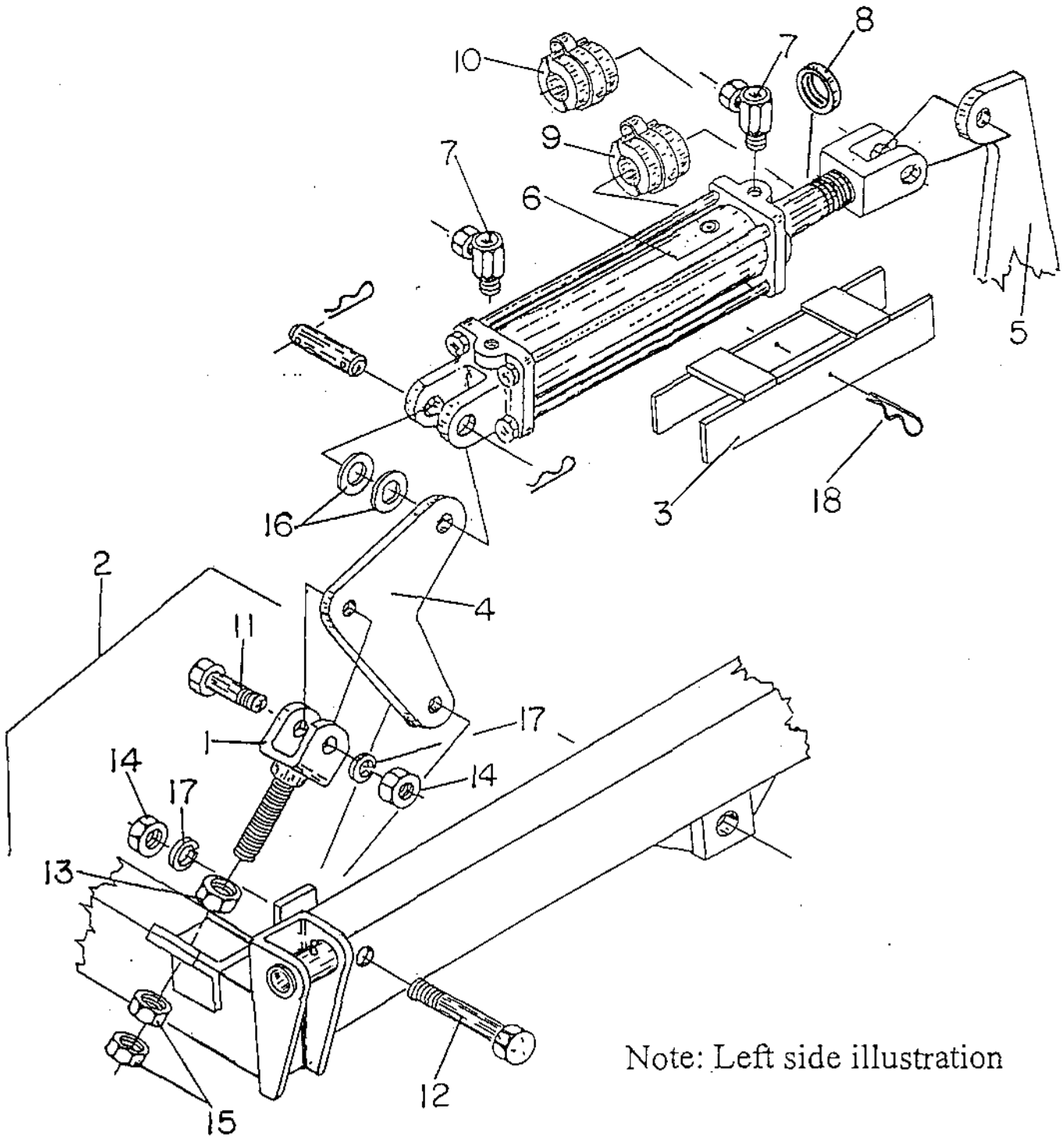


Note: Left side illustration

Depth stop kits, Tandem wheel legs & Adj. linkage

Key	Part No.	Description
1	0410-581	Adjustable linkage assembly
2	0420-108	Cylinder lock, 14-1/2", use W/5819-064
	0420-111	Cylinder lock, 12-1/4", use W/5819-066
3	0420-295	Pivot arm, use W/32" Shank
4	0420-330	Tandem wheel leg assembly, 6 bolt, left wing
	0420-335	Tandem wheel leg assembly, 6 bolt, right wing
	0420-410	Tandem wheel leg assembly, 8 bolt, center, left
	0420-415	Tandem wheel leg assembly, 8 bolt, center, right
5	----	Hydraulic cylinders
6	6136-675	Bushing, 1.75"OD x 1.531"ID x 1.438"
7	6899-402	Medium size A, Depth stop kit
	6896-100	Depth stop, white 1" med.
	6896-125	Depth stop, green, 1 1/4" med.
	6896-150	Depth stop, blue, 1 1/2" med.
	6896-175	Depth stop, red, 1 3/4" med
	6896-200	Depth stop, yellow, 2" med
8	6899-502	Large size B, Depth stop kit
	6897-100	Depth stop, white, 1" large
	6897-125	Depth stop, green, 1 1/4" large
	6897-150	Depth stop, blue, 1 1/2" large
	6897-175	Depth stop, red, 1 3/4" large
	6897-200	Depth stop, yellow, 2" large
9	7717-555	Hex Nylock nut, 1 1/2"NC
10	7816-020	Cut washer, 1"
11	7896-500	Machine bushing, 1 1/2" x 10GA. NR
12	7920-002	Hitch pin # 8, cylinder lock
13	8116-803	Bolt, 1 1/2"NC x 4-1/8", W/7717-555 Nylock nut
	8117-003	Bolt, 1 1/2"NC x 4-1/2", W/7717-555 Nylock nut

Adj. link assembly, Hydraulic Cylinders & Locks

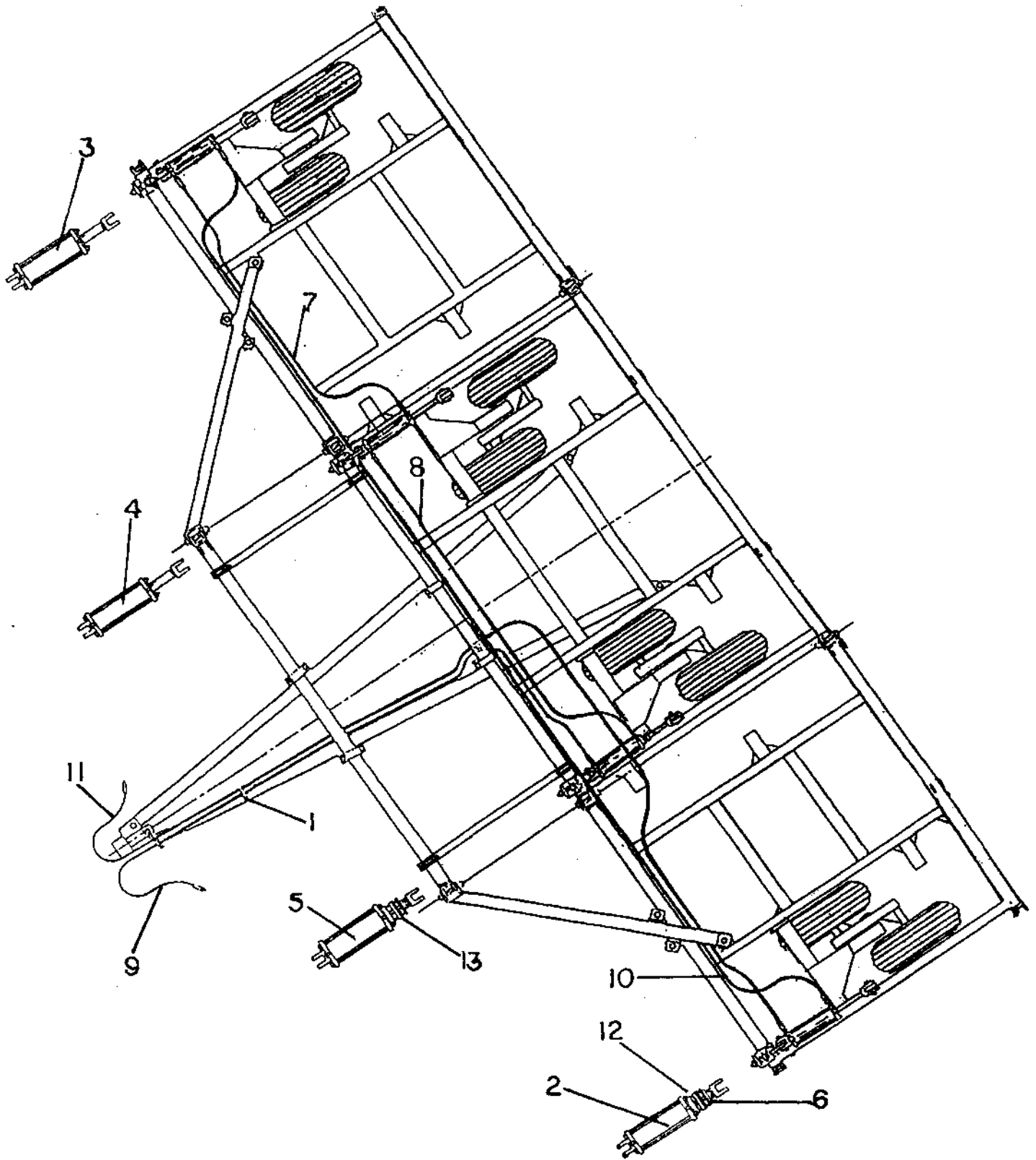


Note: Left side illustration

Adj. link assembly, Hydraulic Cylinders & Locks

Key	Part No.	Description
1	0410-121	Adjustable link
2	0410-581	Adjustable link assembly
3	0420-108	Cylinder lock, 14-1/2", use W/5819-064
	0420-111	Cylinder lock, 12-1/4", use W/5819-066
4	0420-295	Pivot arm, use W/32" Shank
5	---- ---	Tandem wheel leg assemblies
6	5819-063	Hydraulic cylinder, 3 1/2" x 12, rephase, left wing
	5819-064	Hydraulic cylinder, 3 3/4" x 12, rephase, right wing
	5819-065	Hydraulic cylinder, 4 x 12, rephase, center right
	5819-066	Hydraulic cylinder, 4 1/2" x 12, rephase, center left
7	5846-095	1/2" O-Ring, 90 degree swivel union
8	6146-013	Bushing, use W/5819-063
9	6899-402	Medium size A Depth stop kit, 5 sizes 1" thru 2", use W/5819-063
10	6899-502	Large size B Depth stop kit, 5 sizes 1" thru 2", use W/5819-066
11	7115-025	Cap screw, 3/4"NC x 2 -1/2"
12	7115-050	Cap screw, 3/4"NC x 5"
13	7715-871	Hex nut, 7/8"NC
14	7725-002	Hex nut, 3/4"NC
15	7725-138	Hex jam nut, 7/8"NC
16	7816-020	Cut washer, 1"
17	7845-020	Lock washer, 3/4"
18	7920-002	Hitch pin, #8 Cylinder lock

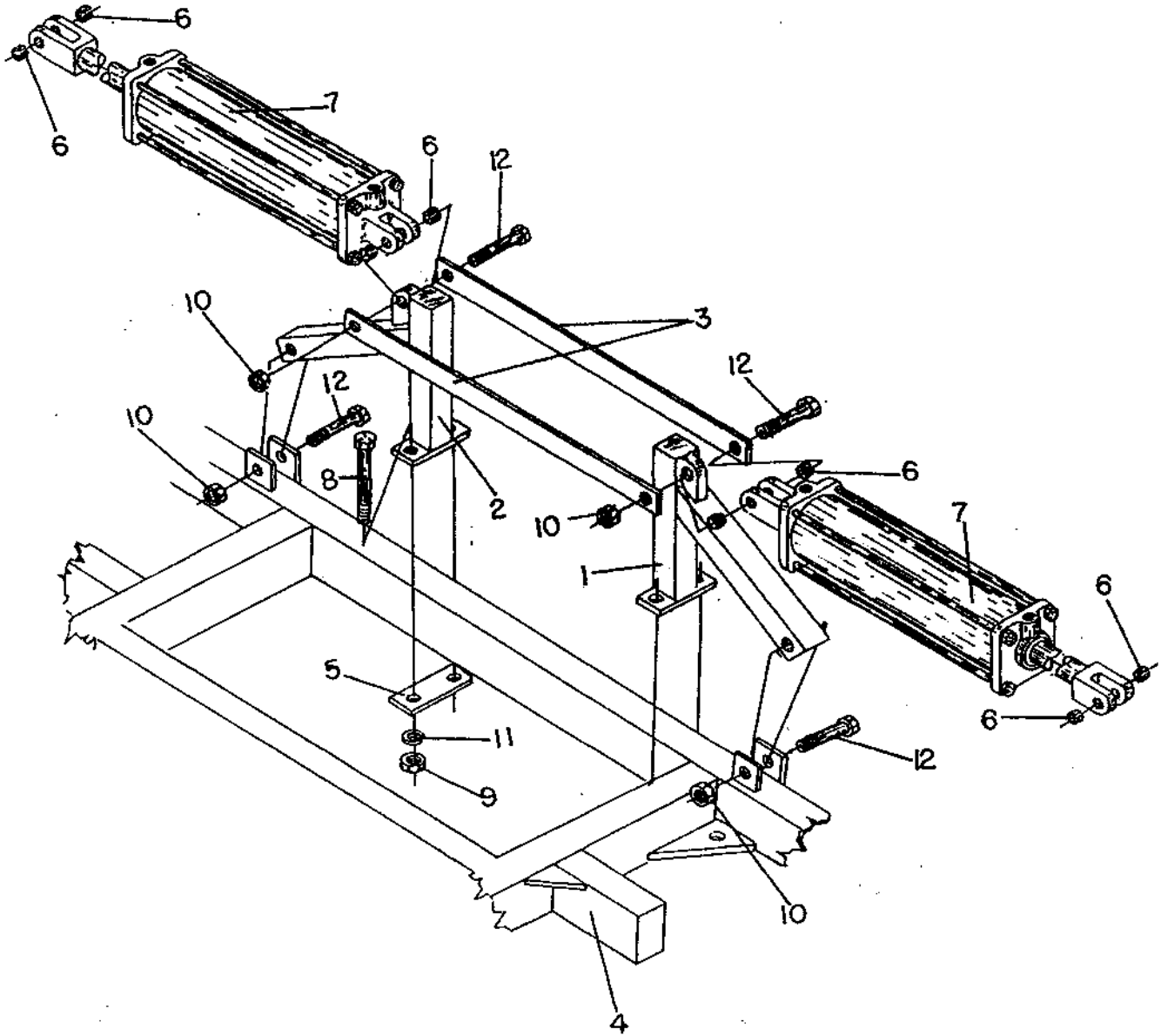
Main lift system hydraulic components



Main lift system hydraulic components

Key	Part No.	Description
1	5229-007	Ty-rap, ½ x 28 Panduit
2	5819-063	Hydraulic cylinder, 3-1/2 x 12, rephase, left wing
3	5819-064	Hydraulic cylinder, 3-3/4 x 12, rephase, right wing
4	5819-065	Hydraulic cylinder, 4 x 12, rephase, center right
5	5819-066	Hydraulic cylinder, 4-1/2 x 12, rephase, center left
6	6146-013	Bushing, use W/5819-063
7	6822-362	Hose, 3/8 x 162
8	6822-366	Hose, 3/8 x 180
9	6822-516	Hose, 3/8 x 300
10	6822-583	Hose, 3/8 x 474
11	6822-632	Hose, 3/8 x 432
12	6899-402	Medium size A, Depth stop kit
13	6899-502	Large size B, Depth stop kit

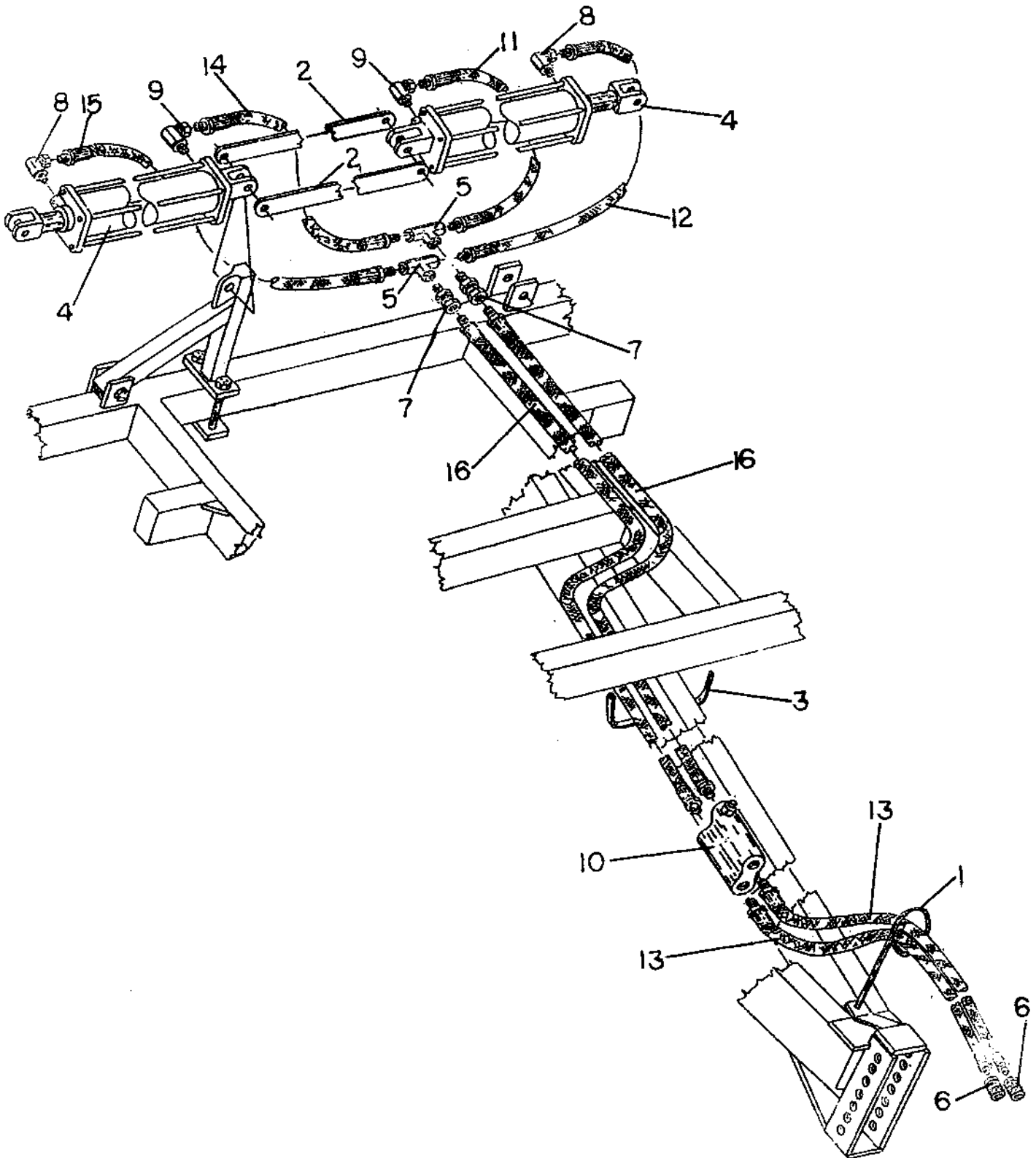
Wing lift components, Center frame



Wing lift components, Center frame

Key	Part No.	Description
1	0410-033	Center support mount, left
2	0410-034	Center support mount, right
3	0420-168	Center support bar
4	0420-199	Center frame, 13 ft.
5	0420-293	Mount plate
6	5818-030	Clevis pin bushing
7	5818-610	Hydraulic cylinder, 5 x 24
8	7114-080	Cap screw, 5/8"NC x 8"
9	7724-005	Hex nut, 5/8"NC
10	7726-012	Hex Nylock nut, 1"NC
11	7844-020	Lock washer, 5/8"
12	8116-018	Bolt, 1"NC x 5-5/16", Nylock

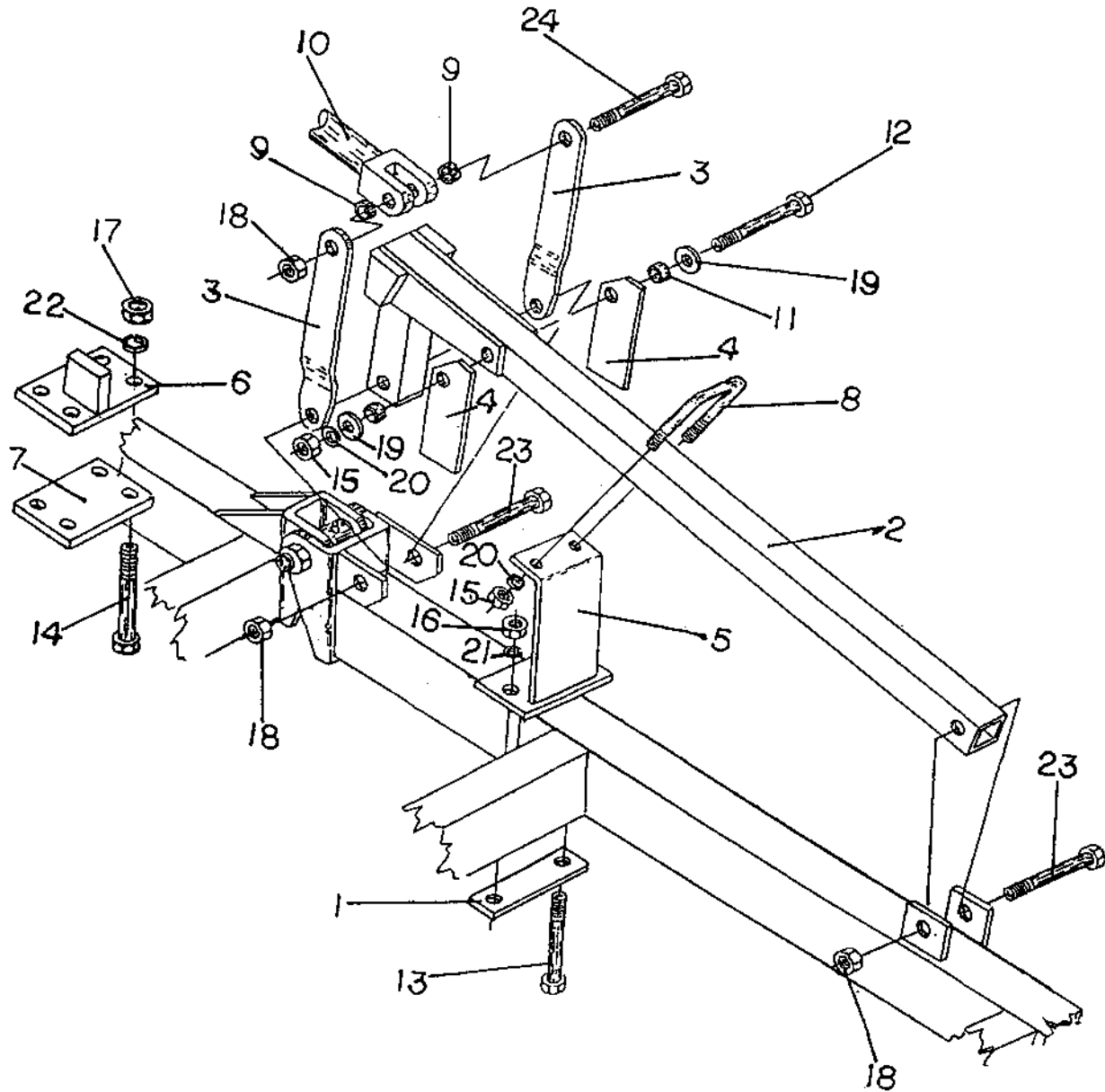
Hydraulic components, Wing lift center frame



Hydraulic components, Wing lift center frame

Key	Part No.	Description
1	0101-037	Hose mast
2	0420-168	Center support bar
3	5229-007	Ty-Rap, 1/2" x 28 Panduit
4	5818-610	Hydraulic cylinder, 5 x 24
5	5833-101	1/2 x 1/2 Tee
6	5843-235	1/2 Hydraulic male quick coupler
7	5843-400	1/2 Straight swivel union
8	5843-469	1/2 90 degree restrictor union, O-Ring
9	5846-095	1/2 90 degree swivel union, O-Ring
10	5859-045	Cushion valve, SRC 11 BD
11	6822-225	Hose, 3/8 x 25-1/2, M-M
12	6822-234	Hose, 3/8 x 34-1/2, M-M
13	6822-272	Hose, 3/8 x 72-1/2, M-M
14	6822-291	Hose, 3/8 x 96, M-M
15	6822-303	Hose, 3/8 x 108
16	6822-445	Hose, 3/8 x 258

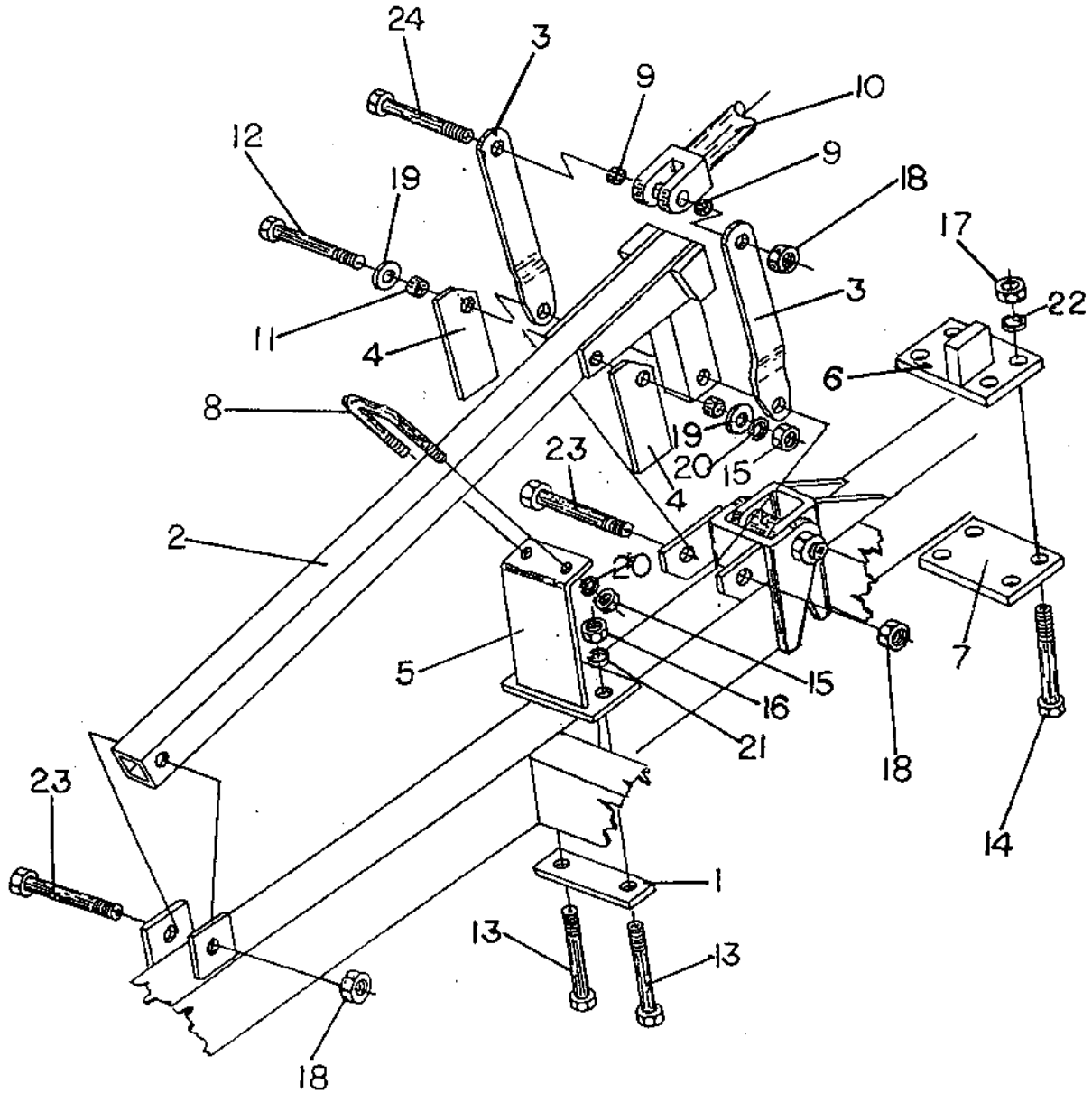
Wing lift components, Left wing



Wing lift components, Left wing

Key	Part No.	Description
1	0212-877	Base plate
2	0400-020	Wing lift
3	0400-032	Toggle, wing lift
4	0410-106	Wing lift stop
5	0410-175	Center brace, left
6	0420-176	Wing fold stop, left
7	0420-300	Base plate
8	5213-001	U-Bolt, 1/2"NC x 3-1/16" x 3-7/8"
9	5818-030	Clevis pin bushing
10	5818-610	Hydraulic cylinder, 5 x 24
11	6133-007	Bushing, 0.75" OD x 0.51" ID x 0.438"
12	7113-127	Cap screw, 1/2"NC x 5"
13	7114-080	Cap screw, 5/8"NC x 8"
14	7115-080	Cap screw, 3/4"NC x 8"
15	7723-015	Hex nut, 1/2"NC
16	7724-005	Hex nut, 5/8"NC
17	7725-002	Hex nut, 3/4"NC
18	7726-012	Hex Nylock nut, 1"NC
19	7813-015	Flat washer, 1/2"
20	7843-015	Lock washer, 1/2"
21	7844-020	Lock washer, 5/8"
22	7845-020	Lock washer, 3/4"
23	8116-003	Bolt, 1"NC x 6-1/4", Nylock W/7726-012
24	8116-601	Bolt, 1"NC x 5-3/4", Nylock W/7726-012

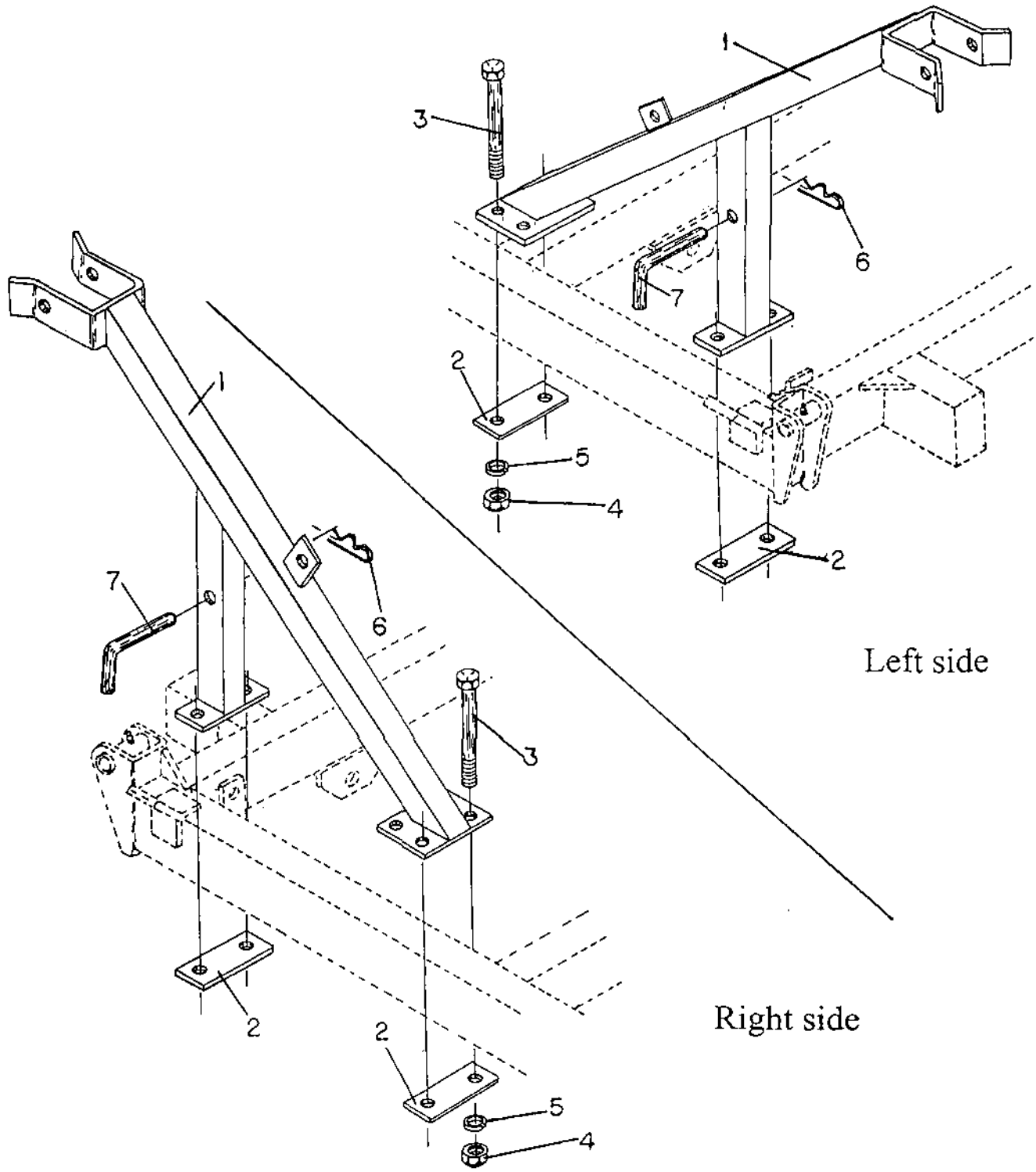
Wing lift components, Right wing



Wing lift components, Right wing

Key	Part No.	Description
1	0212-877	Base plate
2	0400-020	Wing lift
3	0400-032	Toggle, wing lift
4	0410-106	Wing lift stop
5	0410-176	Center brace, right
6	0420-175	Wing fold stop, right
7	0420-300	Base plate
8	5213-001	U-Bolt, 1/2"NC x 3-1/16" x 3-7/8"
9	5818-030	Clevis pin bushing
10	5818-610	Hydraulic cylinder, 5 x 24
11	6133-007	Bushing, 0.75" OD x 0.51" ID x 0.438"
12	7113-127	Cap screw, 1/2"NC x 5"
13	7114-080	Cap screw, 5/8"NC x 8"
14	7115-080	Cap screw, 3/4"NC x 8"
15	7723-015	Hex nut, 1/2"NC
16	7724-005	Hex nut, 5/8"NC
17	7725-002	Hex nut, 3/4"NC
18	7726-012	Hex Nylock nut, 1"NC
19	7813-015	Flat washer, 1/2"
20	7843-015	Lock washer, 1/2"
21	7844-020	Lock washer, 5/8"
22	7845-020	Lock washer, 3/4"
23	8116-003	Bolt, 1"NC x 6-1/4", Nylock W/7726-012
24	8116-601	Bolt, 1"NC x 5-3/4", Nylock W/7726-012

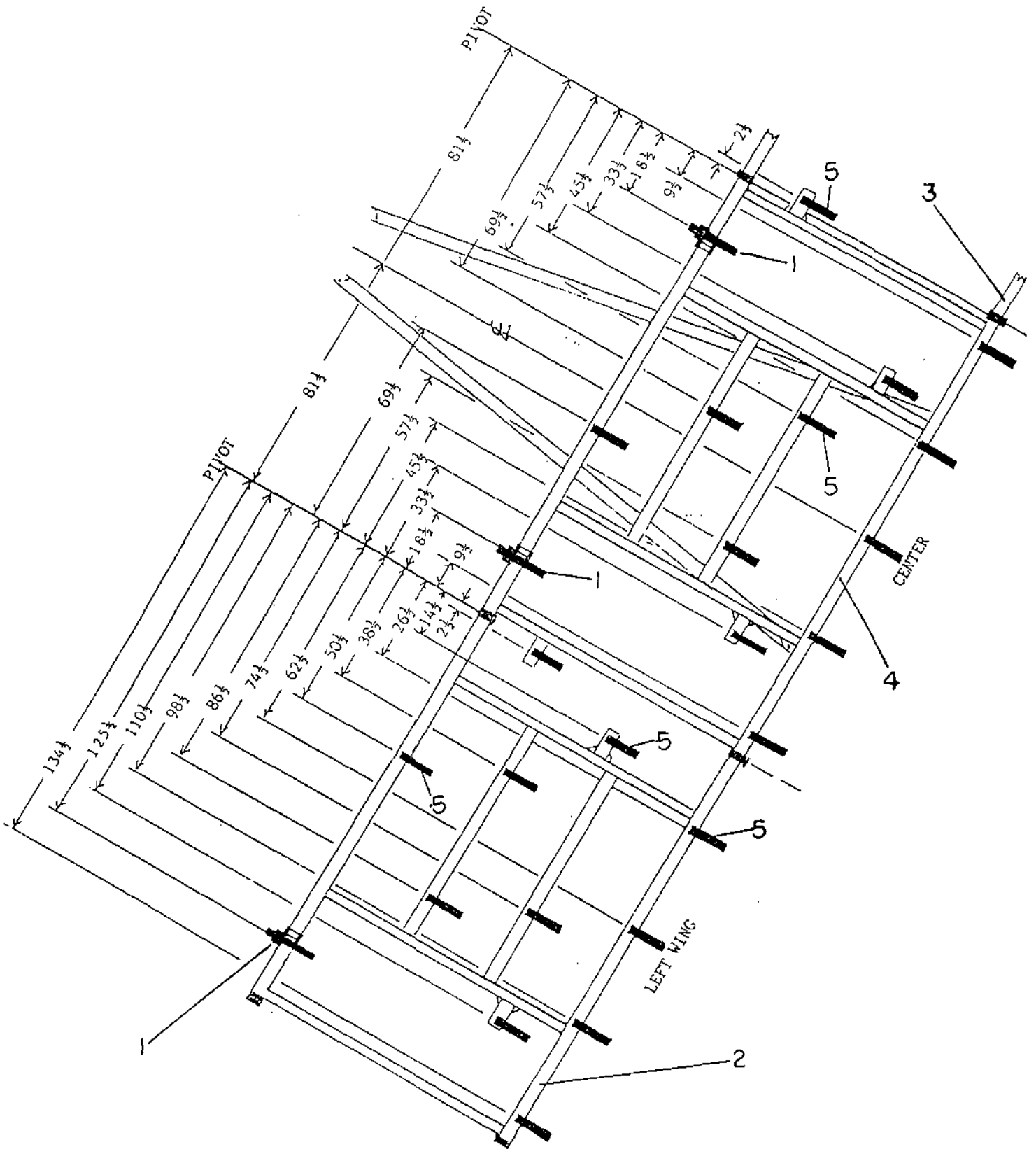
Center frame transport latch



Center frame transport latch

Key	Part No.	Description
1	0420-100	Transport latch
2	0420-293	Mounting plate
3	7114-080	Cap screw, 5/8"NC x 8"
4	7724-005	Hex nut, 5/8"NC
5	7844-020	Lock washer, 5/8"
6	7920-002	Hitch pin, #8
7	8036-801	Pin, wing lock, 1" x 6-1/2"

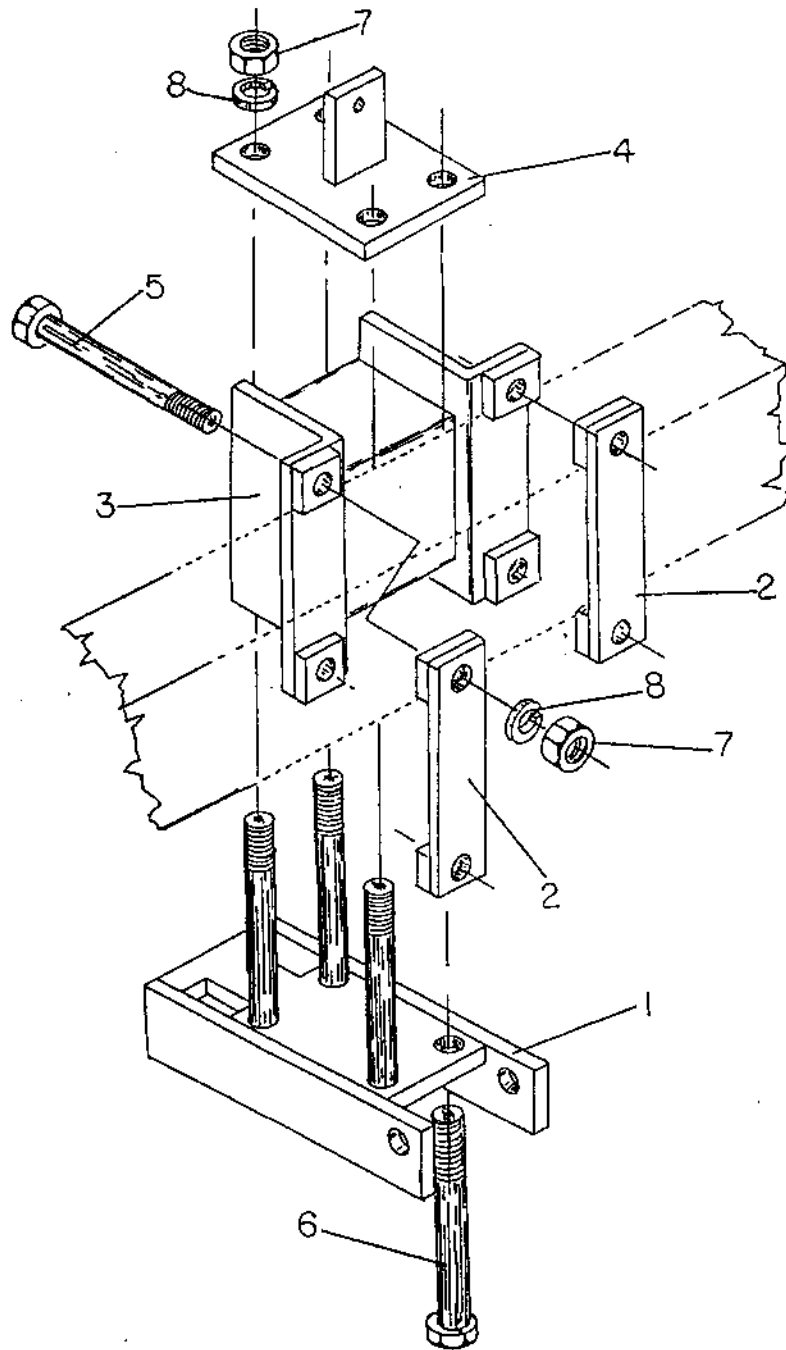
Shank layout



Shank layout

Key	Part no.	Description
1	0420-118	Forward shank mount
2	0420-197	Wing frame, 12 ft., left
3	0420-198	Wing frame, 12 ft., right
4	0420-199	Center frame, 13 ft.
5	0420-353	32" Stiff chisel shank assembly
	0420-355	32" Spring chisel shank assembly

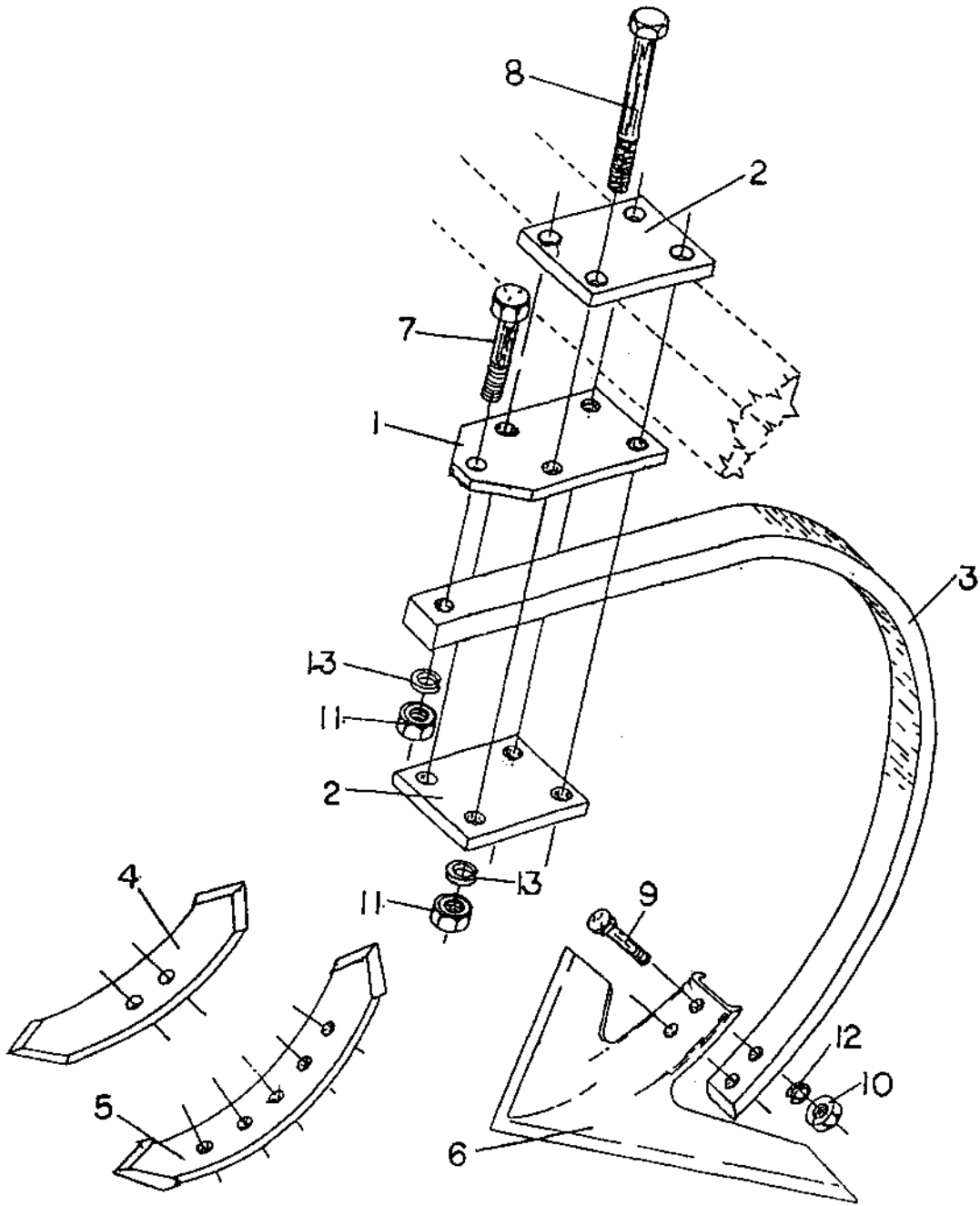
Forward shank mount



Forward shank mount

Key	Part No.	Description
1	0420-081	Shank mount bracket
2	0420-114	Backing plate
3	0420-118	Forward shank mount
4	0425-030	Cylinder lock holder
5	7115-071	Cap screw, 3/4"NC x 6 1/2"
6	7115-080	Cap screw, 3/4"NC x 8"
7	7725-002	Hex nut, 3/4"NC
8	7845-020	Lock washer, 3/4"

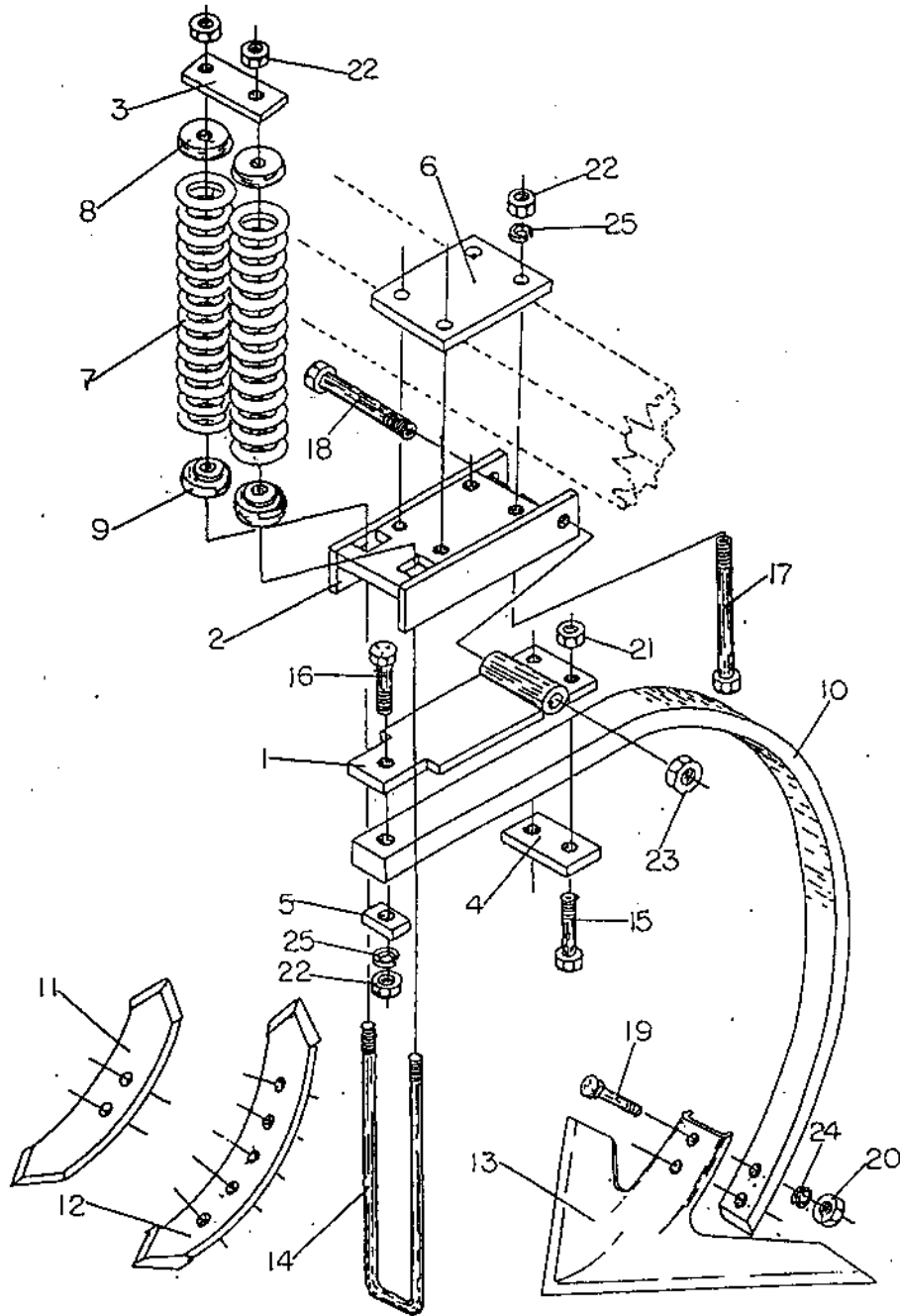
Stiff shank assembly



Stiff shank assembly

Key	Part No.	Description
	0420-353	32" Stiff shank assembly, W/O Points
	Note: Not all parts illustrated are included in assembly	
1	0420-087	Shank mount
2	0420-289	Mount plate
3	5939-002	32" Shank
4	5952-609	Point, reversible, bolt on
5	5952-612	Point, twisted right hand
	5952-613	Point, twisted left hand
6	5952-635	Sweep, 16"
	5952-641	Sweep, 18"
7	7115-030	Cap screw, 3/4"NC x 3"
8	7115-099	Cap screw, 3/4"NC x 10"
9	7273-001	Plow bolt No. 2, 1/2"NC x 2-1/2"
10	7723-015	Hex nut, 1/2"NC
11	7725-002	Hex nut, 3/4"NC
12	7843-015	Lock washer, 1/2"
13	7845-020	Lock washer, 3/4"

Spring shank assembly



Spring shank assembly

Key	Part No.	Description
	0420-355	32" Spring shank assembly, W/O Points

Note: Not all parts illustrated are included in assembly.

1	0420-080	Shank mount hinge
2	0420-081	Shank mount bracket
3	0420-297	Support plate
4	0420-298	Mount plate
5	0420-299	Spacer
6	0420-300	Mount backing plate
7	5113-001	Spring
8	5919-050	Top insert
9	5919-051	Bottom insert
10	5939-002	32" Shank
11	5952-609	Point, reversible, bolt on
12	5952-612	Point, twisted right hand
	5952-613	Point, twisted left hand
13	5952-635	Sweep, 16"
	5952-641	Sweep, 18"
14	6215-001	U-Bolt, 3/4"NC W/2-7/16" Span
15	7114-028	Cap screw, 5/8"NC x 3-1/4"
16	7115-030	Cap screw, 3/4"NC x 3"
17	7115-080	Cap screw, 3/4"NC X 8"
18	7115-112	Cap screw, 7/8"NC x 7"
19	7273-001	Plow bolt, No. 2, 1/2"NC x 2-1/2"
20	7723-015	Hex nut, 1/2"NC
21	7724-120	Lock nut, 5/8"NC
22	7725-002	Hex nut, 3/4"NC
23	7725-130	Lock nut, 7/8"NC
24	7843-015	Lock washer, 1/2"
25	7845-020	Lock washer, 3/4"

Appendix A

Page Reference Guide

Part number page reference

Part No.	Description	Page No.
CW9-030	Caster wheel leg, left	11
CW9-031	Caster wheel leg, right	13
CW9-034	Spindle platform	11, 13
CW9-045	Shaft, 1-5/8" x 18"	11, 13
CW9-555	Caster wheel leg assembly, left	11
CW9-556	Caster wheel leg assembly, right	13
0101-037	Hydraulic hose mast assembly	5, 31
0106-211	Hydraulic hose mast	5
0200-147	Limit plate	11, 13
0206-031	Clamp plate, 4" span-3/4" bolts	5, 11, 13
0212-877	Base plate	33, 35
0400-020	Wing lift	33, 35
0400-032	Toggle, wing lift	33, 35
0403-296	Tongue brace plate	5
0410-033	Center support mount, left	29
0410-034	Center support mount, right	29
0410-106	Wing lift stop	33, 35
0410-121	Adjustable link	25
0410-175	Center brace, left	33
0410-176	Center brace, right	35
0410-581	Adjustable link assembly	23, 25
0420-045	Tandem wheel leg, wing frame, left	19, 21
0420-046	Tandem wheel leg, wing frame, right	19, 21
0420-053	Walking beam, W/5419-125 Cup, left	21
0420-054	Walking beam, W/5419-125 Cup, right	21
0420-055	Walking beam, W/5419-122 Race, right	17
0420-056	Walking beam, W/5419-122 Race, left	17
0420-080	Shank mount hinge	45
0420-081	Shank mount bracket	41, 45
0420-087	Shank mount	43

Part number page reference

Part No.	Description	Page No.
0420-100	Transport latch	37
0420-102	Rear stand	5
0420-103	Rear stand adjustment bracket	5
0420-108	Cylinder lock, 14-1/2", use W/5819-064	23, 25
0420-110	Depth wheel arm, 32" shank	11, 13
0420-111	Cylinder lock, 12-1/4", use W/5819-066	23, 25
0420-114	Backing plate	41
0420-118	Forward shank mount	39, 41
0420-165	Tandem wheel leg, Center frame, left	15, 17
0420-166	Tandem wheel leg, Center frame, right	15, 17
0420-168	Center support bar	29, 31
0420-169	Cross tongue	3, 5, 7, 9
0420-175	Wing fold stop, right	35
0420-176	Wing fold stop, left	33
0420-177	Cross tongue brace	5
0420-185	Tongue right side	5
0420-186	Tongue left side	5
0420-189	Wing pull, left	3, 7
0420-190	Wing pull, right	3, 9
0420-197	Wing frame, 12ft., left	3, 7, 39
0420-198	Wing frame, 12ft., right	3, 9, 39
0420-199	Center frame, 13ft.	3, 5, 7, 9, 29, 39
0420-289	Mount plate	43
0420-293	Mount plate	29, 37
0420-295	Pivot arm, use W/32" shank	23, 25
0420-297	Support plate	45
0420-298	Mount plate	45
0420-299	Spacer	45
0420-300	Mount backing plate	33, 35, 45
0420-330	Tandem wheel leg assembly, left wing	19, 23
0420-335	Tandem wheel leg assembly, right wing	19, 23
0420-353	32" Stiff chisel shank assembly	39, 43
0420-355	32" Spring chisel shank assembly	39, 45

Part number page reference

Part No.	Description	Page No.
0420-410	Tandem wheel leg assembly, Center, left	15, 23
0420-415	Tandem wheel leg assembly, Center, right	15, 23
0420-450	Walking beam assembly, Center right	15, 17
0420-455	Walking beam assembly, Center, left	15, 17
0420-460	Walking beam assembly, 6 bolt, right	19, 21
0420-480	Walking beam assembly, 6 bolt, left	19, 21
0420-936	Mounting plate	5
0425-030	Cylinder lock holder	41
5113-001	Spring	45
5213-001	U-Bolt, 1/2"NC x 3-1/16" x 3-7/8"	33, 45
5229-007	Ty-Rap, 1/2" x 28 Panduit	27, 31
5419-113	Outer bearing	11, 21
5419-118	Outer cup	11, 21
5419-122	Race	17
5419-125	Cup, bearing race	21
5419-126	Bearing	21
5419-127	Bearing	21
5419-141	Cup, inner	11, 21
5419-142	Bearing cone, inner	11, 21
5419-152	Bearing	17
5419-153	Race	17
5419-154	Bearing	17
5439-020	Seal, wheel leg assembly	21
5439-141	Seal, 6 bolt hub	11, 21
5439-151	Seal	17
5469-006	Hub cap	11, 21
5469-013	Dust cap	17
5619-021	Hub assembly, 6 bolt	11, 13 21
5619-022	Hub, 6 bolt	11, 21
5619-025	8 bolt Hub assembly	17
5619-026	8 bolt Hub	17

Part number page reference

Part No.	Description	Page No.
5629-001	Spindle, 3650, 2-1/8" butt	21
5639-029	Tire and wheel, 7.60 x 15, 8 ply	11,13
5639-421	Wheel, 15", 6 bolt	11, 19
5639-426	Wheel, 15" x 8, 8 bolt	15
5649-009	Tire, 7.60 x 15, 8 ply, rib	11
5649-062	Tire, 9.9L x 15, 8 ply	15, 19
5649-035	Tire, 12.5 x 15, 8 ply	15, 19
5649-503	Tire, 11L x 15, 8 ply	15, 19
5818-030	Clevis pin bushing	29, 33, 35
5818-610	Hydraulic cylinder, 5 x 24	29, 31, 33, 35
5819-063	Hydraulic cylinder, 3-1/2" x 12, rephase, left wing	25, 27
5819-064	Hydraulic cylinder, 3-3/4" x 12, rephase, right wing	25, 27
5819-065	Hydraulic cylinder, 4" x 12 rephase, center right	25, 27
5819-066	Hydraulic cylinder, 4-1/2" x 12 rephase, center left	25, 27
5833-101	Tee, 1/2 x 1/2"	31
5843-235	1/2 Hydraulic swivel union	31
5843-400	1/2 Straight swivel union	31
5843-469	1/2- 90 degree Restrictor union, O-Ring	31
5846-095	1/2 O-Ring, 90 degree swivel union	25, 31
5859-045	Cushion valve, SRC 11 B 2	31
5919-050	Top insert	45
5919-051	Bottom insert	45
5919-900	Tongue flapper, cast	5
5939-002	Shank, 32"	43, 45
5952-609	Point, reversible, bolt on	43, 45
5952-612	Point, twisted, right hand	43, 45
5952-613	Point, twisted, left hand	43, 45
5952-635	Sweep, 16"	43, 45
5952-641	Sweep, 18"	43, 45

Part number page reference

Part No.	Description	Page No.
6133-007	Bushing, 0.75" OD x 0.51" ID x 0.438	33, 35
6136-675	Bushing, 1.75" OD x 1.531" ID x 1.438	23
6146-013	Bushing, use W/5819-063	27
6215-001	U-Bolt, 3/4"NC, W/2-7/16" Span	45
6329-055	Tongue jack	5
6469-020	Hub cap	21
6487-007	Set collar, 1-11/16"	11, 13
6628-016	Spindle, wheel leg	17
6628-017	Spindle, walking beam	17
6628-018	Spindle, walking beam	21
6822-225	Hose, 3/8 x 25-1/2, M-M	31
6822-234	Hose, 3/8 x 34-1/2, M-M	31
6822-272	Hose, 3/8 x 72-1/2, M-M	31
6822-291	Hose, 3/8 x 96, M-M	31
6822-303	Hose, 3/8 x 108	31
6822-362	Hose, 3/8 x 162	27
6822-366	Hose, 3/8 x 180	27
6822-445	Hose, 3/8 x 258	31
6822-516	Hose, 3/8 x 300	27
6822-583	Hose, 3/8 x 474	27
6822-632	Hose, 3/8 x 432	27
6896-100	Depth stop, white 1" med.	23
6896-125	Depth stop, green 1-1/4" med.	23
6896-150	Depth stop, blue 1-1/2" med.	23
6896-175	Depth stop, red 1-3/4" med.	23
6896-200	Depth stop, yellow 2" med.	23
6897-100	Depth stop, white 1" large	23
6897-125	Depth stop, green 1-1/4" large	23
6897-150	Depth stop, blue 1-1/2" large	23
6897-175	Depth stop, red 1-3/4" large	23
6897-200	Depth stop, yellow 2" large	23
6899-402	Depth stop kit, medium size A	23, 25, 27
6899-502	Depth stop kit, large size B	23, 25, 27

Chisel Plow 37ft.

J.E. LOVE COMPANY

LOVE

A-5

Part number page reference

Part No.	Description	Page No.
7113-121	Cap screw, 1/2"NC x 3-3/4"	11, 13
7113-127	Cap screw, 1/2"NC x 5"	33, 35
7114-028	Cap screw, 5/8"NC x 3-1/4"	45
7114-030	Cap screw, 5/8"NC x 3-1/2"	11, 13
7114-040	Cap screw, 5/8"NC x 4"	17, 21
7114-050	Cap screw, 5/8"NC x 5"	17, 21
7114-055	Cap screw, 5/8"NC x 5-1/2"	5
7114-080	Cap screw, 5/8"NC x 8"	29, 33, 35, 37
7114-109	Cap screw, 5/8"NC x 2"	5
7115-025	Cap screw, 3/4"NC x 2-1/2"	25
7115-030	Cap screw, 3/4"NC x 3"	43, 45
7115-050	Cap screw, 3/4"NC x 5"	25
7115-071	Cap screw, 3/4"NC x 6-1/2"	41
7115-080	Cap screw, 3/4"NC x 8"	5, 11, 13, 33, 35, 41, 45
7115-099	Cap screw, 3/4"NC x 10"	43
7115-112	Cap screw, 7/8"NC x 7"	45
7116-030	Cap screw, 1"NC x 3"	5, 7, 9
7273-001	Plow bolt, No.2, 1/2"NC x 2-1/2"	43, 45
7333-006	Lug bolt, 1/2"NF x 1"	11, 13, 21
7333-009	Lug bolt, 9/16"NF x 1-1/4"	17
7707-001	Lock nut, N-08	17, 21
7715-871	Hex nut, 7/8"NC	25
7715-875	Slotted nut, 5/8"NC	11, 17, 21
7717-255	Hex NYlock nut, 1-1/4"NC	7, 9
7717-555	Hex NYlock nut, 1-1/2"NC	23
7723-015	Hex nut, 1/2"NC	11, 13, 33, 43, 45
7724-005	Hex nut, 5/8"NC	5, 11, 13, 17, 21, 29, 33, 35, 37
7724-120	Lock nut, 5/8"NC	45
7725-002	Hex nut, 3/4"NC	5, 11, 13, 25, 33, 35, 41, 43, 45
7725-130	Lock nut, 7/8"NC	45
7725-138	Hex jam nut, 7/8"NC	25
7726-005	Hex nut, 1"NC	5, 7, 9
7726-012	Hex NYlock nut, 1"NC	29, 35

Part number page reference

Part No.	Description	Page No.
7807-001	Ear washer, W-08	17, 21
7813-015	Flat washer, 1/2"	33, 35
7815-014	Flat washer, 7/8", A-325 Hardened	11, 21
7815-025	Flat washer, 7/8"	17
7816-020	Cut washer, 1"	23
7843-015	Lock washer, 1/2"	11, 13, 33, 35, 43, 45
7844-020	Lock washer, 5/8"	5, 11, 13, 17, 21, 29, 33, 35, 37
7845-020	Lock washer, 3/4"	5, 11, 13, 25, 33, 35, 41, 43, 45
7846-020	Lock washer, 1"	5, 7, 9
7896-500	Machine bushing, 1-1/2" x 10 ga. NR	5, 23
7897-015	Machine bushing, 1-5/8" x 10 ga. NR	11, 13
7910-162	Cotter pin, 5/32 x 1-1/2"	11, 17, 21
7920-002	Hitch pin, #8, cylinder lock	23, 25, 37
7920-010	Drive line lock pin	5
7920-012	Hitch pin, 1/2" x 4", W/safety pin	5
8036-025	Pin, tongue flapper, 1-1/2" x 5-1/2"	5
8036-801	Pin, wing lock, 1" x 6-1/2"	37
8115-017	Bolt, 3/4"NC x 6-1/2", W/7717-120	5
8116-003	Bolt, 1"NC x 6-1/4", W/7726-012	33, 35
8116-006	Bolt, 1-1/4"NC x 10-1/2", W/7717-255	5
8116-018	Bolt, 1"NC x 5-5/16", NYlock	29
8116-032	Bolt, 1-1/4"NC x 7", W/7717-255	7, 9
8116-601	Bolt, 1"NC x 5-3/4", W/7726-012	33, 35
8116-803	Bolt, 1-1/2"NC x 4-1/8, W/7717-555	23
8117-003	Bolt, 1-1/2"NC x 4-1/2", W/7717-555	23