

# LOVE STRAW BOSS

The LOVE STRAW BOSS is an economical and effective means to achieve complete residue management with the IHC and Case International Axial Flow combines.



This cutaway illustration is only for the purpose of display. Never operate equipment without all protective shields and devices in place.

J.E. LOVE COMPANY  
**LOVE**

GARFIELD, WASH.  
AC/509 635-1321

NEW ALBANY, MISS.  
AC/601 534-9541

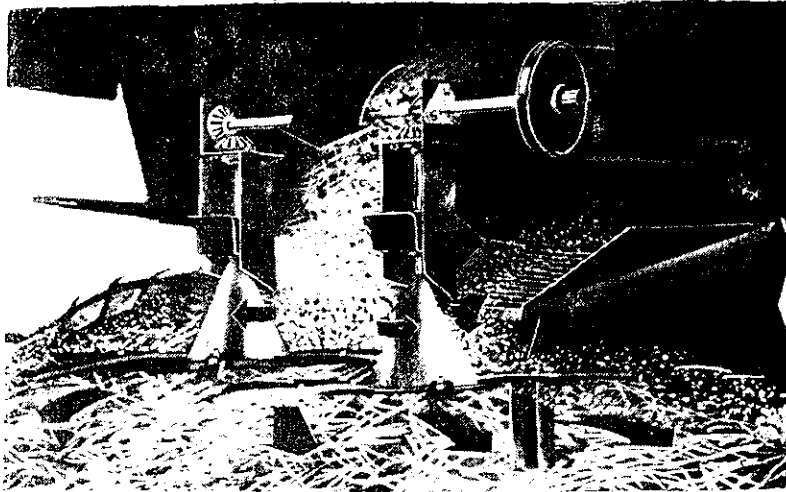


F.O.B.

# J.E. LOVE CO.

GARFIELD, WASHINGTON 99130-0188  
(509) 635-1321  
FAX: (509) 635-1434

# STRAW BOSS



## RESIDUE MANAGEMENT SYSTEM FOR CASE - IH AXIAL-FLOW COMBINES

### STRAW BOSS PROVIDES:

- 1) LARGER DIAMETER SPREADING PLATTERS
- 2) CHAFF CONVEYING PAN
- 3) EXTENDED SPREADER SUPPORTS AND SHAFTS
- 4) FASTER PLATTER ROTATION SPEED\*

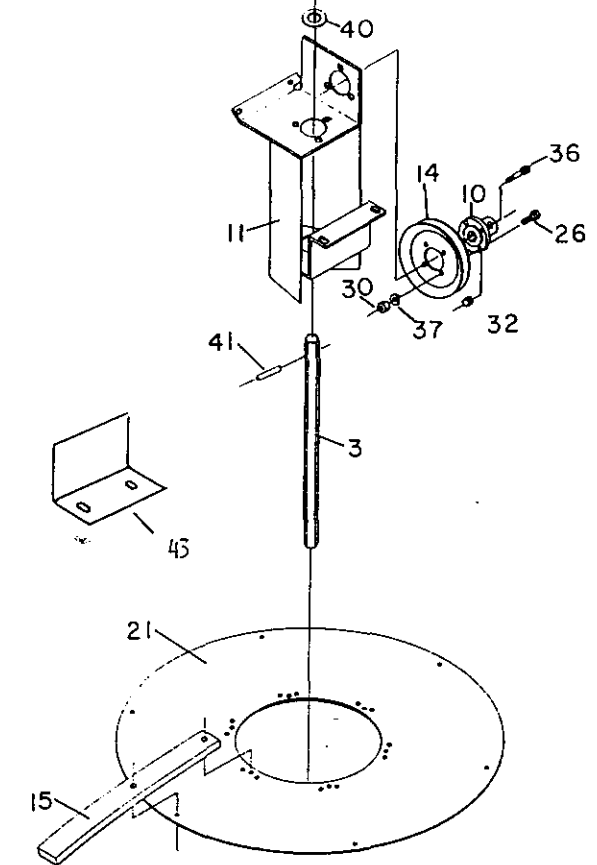
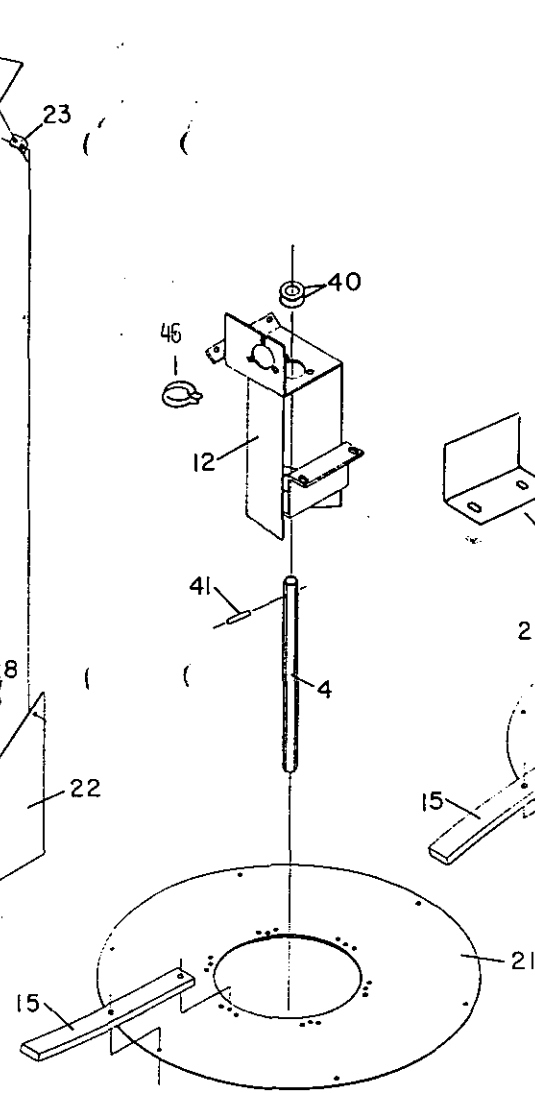
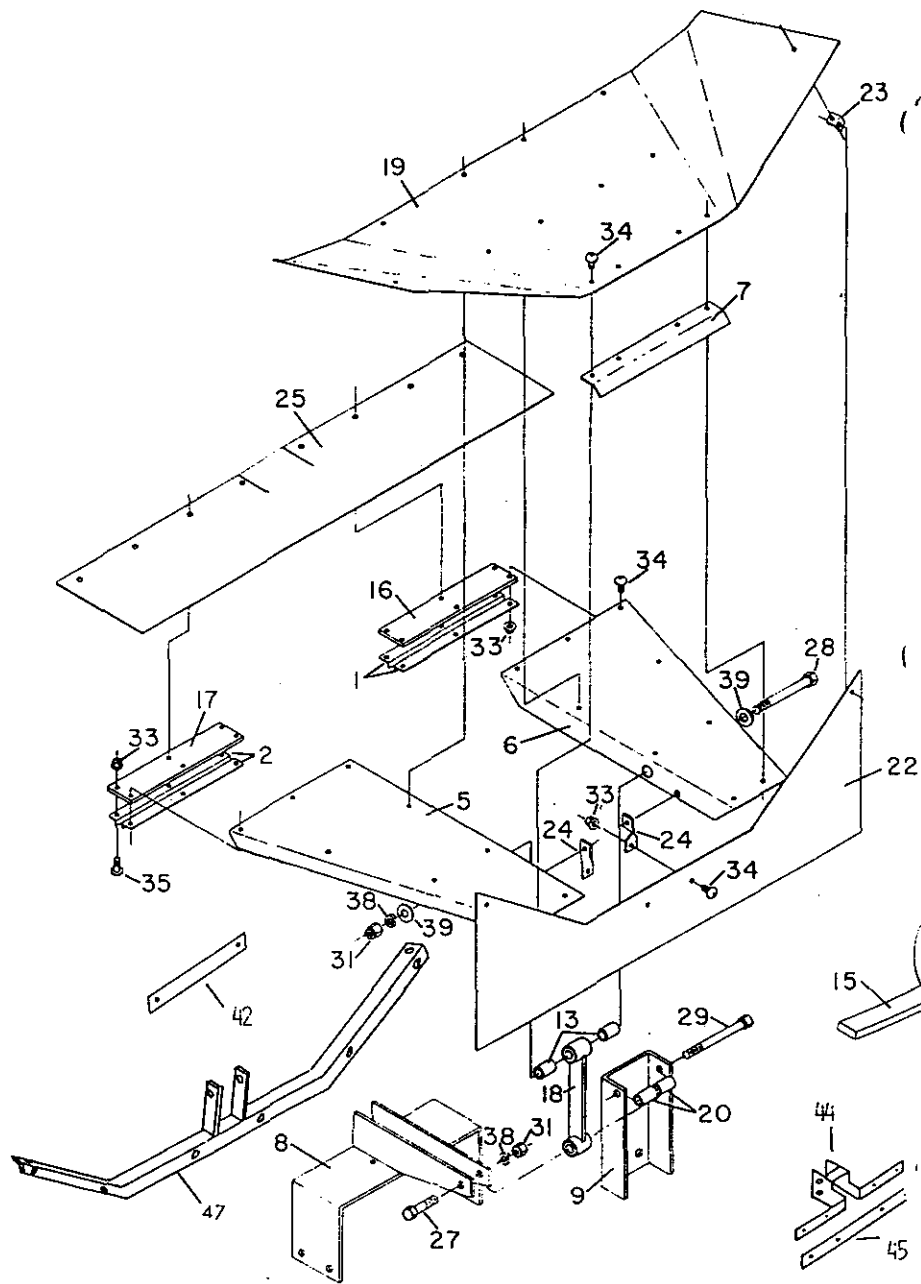
|        |  | SHIPPING<br>WEIGHT*** |
|--------|--|-----------------------|
| G460   | -STRAW BOSS for CASE-IH 1440, 1460, 1640, 1660                         | 195#                  |
| G460W  | -STRAW BOSS for CASE-IH 1440, 1460, 1640, 1660 (WIDE SPREAD)           | 195#                  |
| G461   | -STRAW BOSS for CASE-IH 1466, 1666 WITH EXTENDED SIEVES                |                       |
| G461W  | -STRAW BOSS for CASE-IH 1466, 1666 (WIDE SPREAD) WI/EXTENDED SIEVES    |                       |
| G470   | -STRAW BOSS for CASE-IH 1470   | 195#                  |
| G480   | -STRAW BOSS for CASE-IH 1480, 1482, 1680, 1682                         | 235#                  |
| G481   | -STRAW BOSS for CASE-IH 1680, 1682 with EXTENDED SIEVES                | 190#                  |
| G14042 | -DRIVE BELT KIT 1449 & 1460 WITH OLD STYLE SPREADER DRIVE**            | 5#                    |
| G14094 | -KIT, CONVERSION - G480 TO G481  | 300#                  |
| G14095 | -KIT, COMMON PARTS - G480 & G481                                       | 798#                  |
| G14104 | -KIT, CONVERSION - G481 TO G480  | 714#                  |
| G14105 | -KIT, CONVERSION - G460 TO G461 (SAME AS G14094 EXCEPT FOR 1466, 1666) | 300#                  |

### NOTES:

- \* Models G460W, G470 and G480 have platter rotation speed that is 50% faster than the original equipment.
- \*\* The G460 has a rotation speed that is 17% slower than the other Straw Boss models. This slower speed reduces the width of spread, which may be more desirable in some crop conditions.  
  
Older 1440, and 1460 combines with the spreaders driven from the rotor discharge beater shaft require a G14042 drive belt, which must be ordered separately. Only the G460W should be ordered for these combines with the old style spreader drives. The G460 will NOT work on these combines
- \*\*\* Straw Boss shipping weights listed include a 30 pound pallet, utilized on shipments of 1 to 5 G460, G460W & G470 models and on shipments of 1 to 4 G480 models. For example, a pallet with the maximum of 5-G460 models would weight 855 pounds, while a pallet with the maximum of 4-G480 models would weigh 850 pounds.

## INTEGRATES CHAFF SPREADING WITH INCREASED STRAW DISPERSION

ORDER BY COMBINE MAKE AND MODEL.



**J.E. LOVE COMPANY**  
**LOVE**

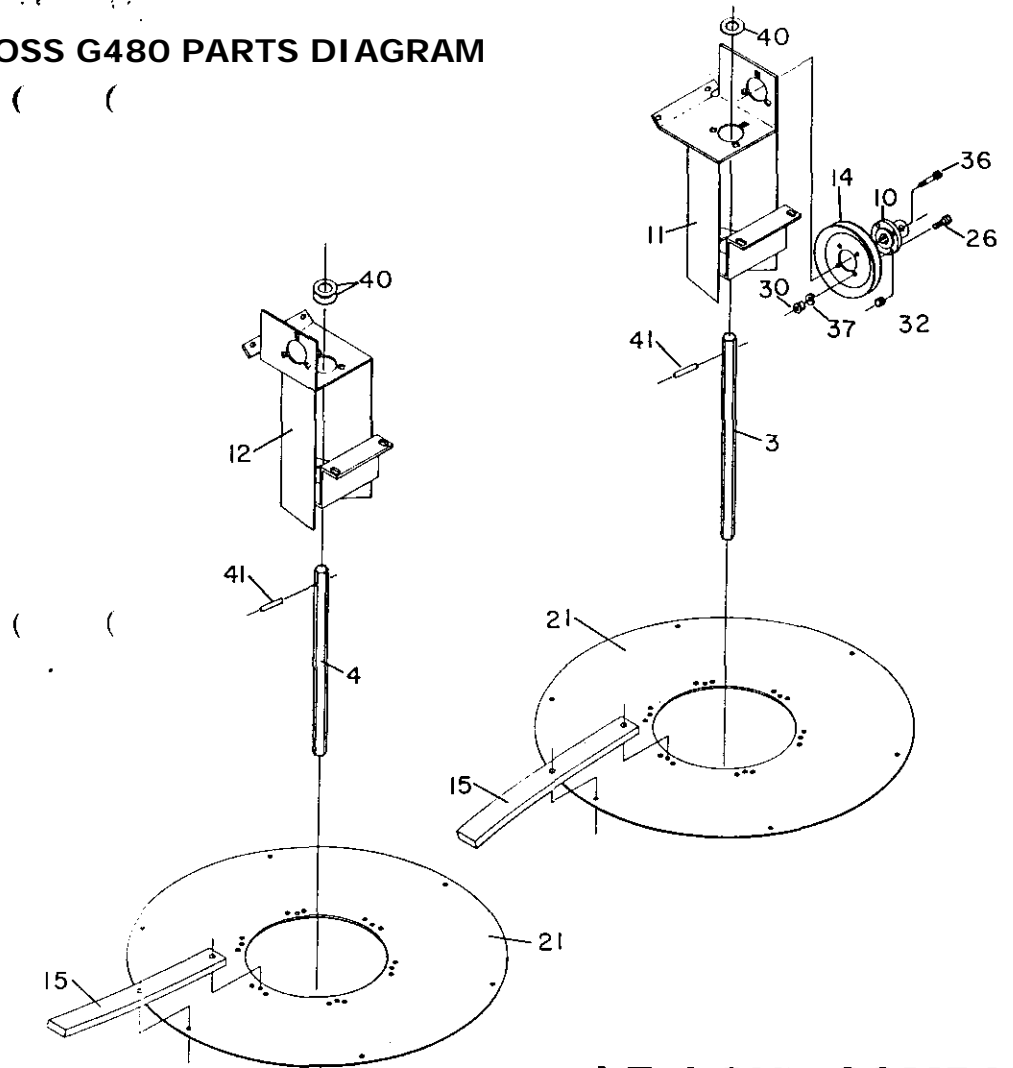
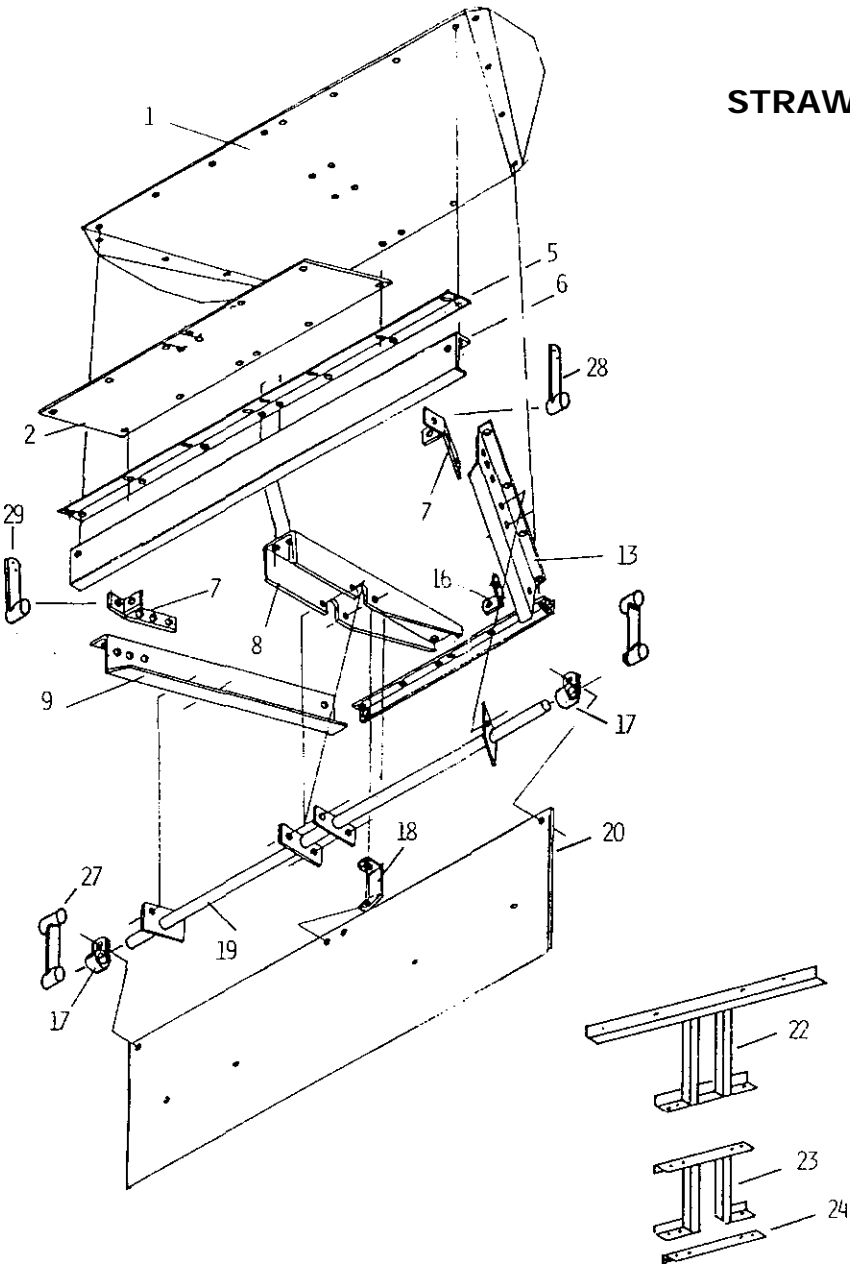
GARFIELD, WASH.  
 AC/509 635-1321

NEW ALBANY, MISS.  
 AC/601 534-9541

G460, G460W AND G470  
PARTS LISTING

| KEY | PART NO. | DESCRIPTION   | QTY |
|-----|----------|---|-----|
| 1   | G14001   | RIGHT HAND FACING STRAP                                   | 2   |
| 2   | G14002   | LEFT HAND FACING STRAP                                    | 2   |
| 3   | G14003   | SPREADER SHAFT, LONG                                      | 1   |
| 4   | G14004   | SPREADER SHAFT, SHORT                                     | 1   |
| 5   | G14005   | SUPPORT FRAME, LEFT HAND                                  | 1   |
| 6   | G14006   | SUPPORT FRAME, RIGHT HAND                                 | 1   |
| 7   | G14007   | REAR BRACE  | 1   |
| 8   | G14008   | CONVEYOR LOWER MOUNT (G460 & G460W ONLY)                  | 1   |
| 9   | G14011   | CONVEYOR LOWER MOUNT (G470 ONLY)                          | 1   |
| 10  | G14018   | HUB   | 1   |
| 11  | G14019   | BEARING CAGE  | 1   |
| 12  | G14020   | BEARING CAGE  | 1   |
| 13  | G14021   | UPPER SPACER  | 2   |
| 14  | G14022   | 7.25-B SHEAVE (G460W & G470)                              | 1   |
|     | G14048   | 8.00-B SHEAVE (G460 ONLY)                                 | 1   |
| 15  | G14023   | PADDLE  | 12  |
| 16  | G14024   | RIGHT HAND MOUNTING STRIP                                 | 1   |
| 17  | G14025   | LEFT HAND MOUNTING STRIP                                  | 1   |
| 18  | G14027   | SHAKER ARM ASSEMBLY                                       | 1   |
| 19  | G14028   | TOP PAN ASSEMBLY  | 1   |
| 20  | G14030   | LOWER SPACER (G470 ONLY)                                  | 2   |
| 21  | G14032   | SPREADER PLATE  | 2   |
| 22  | G14033   | KICKBACK FLAP (G470)                                      | 1   |
|     | G14050   | KICKBACK FLAP (G460 & G460W)                              | 1   |
| 23  | G14034   | END HANGER, REPLACED BY G14088                            | 2   |
| 24  | G14035   | CENTER HANGER, REPLACED BY G14088                         | 2   |
| 25  | G14036   | EXTENSION FLAP (G460 & G460W)                             | 1   |
| 26  |          | 5/16-18 UNC X 1 CAP SCREW                                 | 4   |
| 27  |          | 5/8-11 X 3-1/2 CAP SCREW (G460W)                          | 1   |
| 28  |          | 5/8-11 UNC X 5-1/2 CAP SCREW                              | 1   |
| 29  |          | 5/8-11 X 6 CAP SCREW (G470 ONLY)                          | 1   |
| 30  |          | 5/16-18 UNC HEX NUTS                                      | 4   |
| 31  |          | 5/8-11 UNC HEX NUTS                                       | 2   |
| 32  |          | 5/16-18 UNC NO FLANGE TOP LOCK NUT                        | 1   |
| 33  |          | 5/16-18 UNC WHIZ LOCK SMALL FLANGE NUT                    | 32  |
| 34  |          | 5/16-18 UNC X 3/4 PHILLIPS<br>TRUSS HEAD CAP SCREW        | 26  |
| 35  |          | 5/16-18 UNC X 1 SLOTTED TRUSS<br>HEAD WHIZ LOCK CAP SCREW | 6   |
| 36  |          | 5/16-18 UNC X 1-3/4 SOCKET HEAD SCREW                     | 1   |
| 37  |          | 5/16 LOCK WASHER  | 4   |
| 38  |          | 5/8 LOCK WASHER   | 2   |
| 39  |          | 5/8 FLAT WASHER   | 2   |
| 40  |          | 2-1/16 OD X 1-1/16 X 18 GA MACHINERY BUSH.                | 6   |
| 41  |          | 1/4 DIA X 2 SPRING PIN                                    | 2   |
| 42  | G14045   | BRACE, REPLACED BY G14088                                 | 2   |
| 43  | G14047   | DEFLECTOR   | 1   |
| 44  | G14080   | BAR ASSEMBLY  | 1   |
| 45  | G14079   | CLAMP   | 1   |
| 46  | G14081   | CLAMP (USED ON 1640 & 1660 ONLY)                          | 2   |
| 47  | G14088   | BRACE, FLAP MOUNTING                                      | 1   |

# STRAW BOSS G480 PARTS DIAGRAM



**J.E. LOVE COMPANY**  
**LOVE**

GARFIELD, WASH.  
AC/509 635-1321

G480  
PARTS LISTING

| KEY | PART NO. | DESCRIPTION                                  | QTY |
|-----|----------|--|-----|
| 1   | G14054   | PAN  | 1   |
| 2   | G14061   | EXTENSION                                    | 1   |
| 3   | G14003   | SPREADER SHAFT, LONG                         | 1   |
| 4   | G14004   | SPREADER SHAFT, SHORT                        | 1   |
| 5   | G14062   | EXTENSION STRIP                              | 1   |
| 6   | G14059   | FRONT BEAM                                   | 1   |
| 7   | G14068   | SUPPORT ARM                                  | 2   |
| 8   | G14057   | SUPPORT CHANNEL                              | 1   |
| 9   | G14056   | RAIL, R.H.                                   | 1   |
| 10  | G14018   | HUB  | 1   |
| 11  | G14019   | BEARING CAGE                                 | 1   |
| 12  | G14020   | BEARING CAGE                                 | 1   |
| 13  | G14055   | RAIL, L.H.                                   | 1   |
| 14  | G14022   | 7.25 B SHEAVE                                | 1   |
| 15  | G14052   | PADDLE                                       | 12  |
| 16  | G14063   | CORNER TIE                                   | 2   |
| 17  | G14073   | TUBE CLAMP                                   | 2   |
| 18  | G14060   | CENTER FLAP SUPPORT                          | 2   |
| 19  | G14064   | SUPPORT ROD                                  | 1   |
| 20  | G14074   | KICKBACK FLAP                                | 1   |
| 21  | G14051   | SPREADER PLATE                               | 2   |
| 22  | G14082   | BRACKET, FLAP                                | 1   |
| 23  | G14086   | STAND BRACKET (NOT USED W/POWER ASSIST AXLE) | 1   |
| 24  | G14083   | CLAMP  | 1   |
| 26  |          | 5/16-18 UNC X 1 CAP SCREW                    | 4   |
| 27  | G14069   | REAR SUPPORT ASSY.                           | 2   |
| 28  | G14070   | SHOE BRACE, L.H.                             | 1   |
| 29  | G14071   | SHOE BRACE, R.H.                             | 1   |
| 30  |          | 5/16-18 HEX NUT                              | 4   |
| 32  |          | 5/16-18 UNC NO FLANGE TOP LOCK NUT           | 1   |
| 36  |          | 5/16-18 UNC X 1-3/4 SOCKET HEAD SCREW        | 1   |
| 37  |          | 5/16 LOCK WASHER                             | 4   |
| 40  |          | 2-1/16 O.D. X 1-1/16 GA BUSHING              | 6   |
| 41  |          | 1/4 DIA X 2 SPRING PIN                       | 2   |
| 43  | G14047   | DEFLECTOR                                    | 1   |
| 46  | G14081   | CLAMP (USED ON 1680 ONLY)                    | 2   |

NOT SHOWN:

|        |             |   |
|--------|-------------|---|
| G14084 | L.H. CORNER | 1 |
| G14085 | R.H. CORNER | 1 |
| G14047 | DEFLECTOR   | 1 |